

DRAFT

Long-Range Water Supply Plan: Information to Elected Boards

Ruth Rouse, Planning and Development Manager

January 2021



Carrboro-Chapel Hill's not-for-profit public service agency delivering high quality water, wastewater, and reclaimed water services.

DRAFT

Purpose of Evening

- Provide information on work completed to-date on OWASA's Long-Range Water Supply Plan
- Receive questions and feedback on that work
- Receive feedback on proposed path forward



University Lake

DRAFT

Key Messages

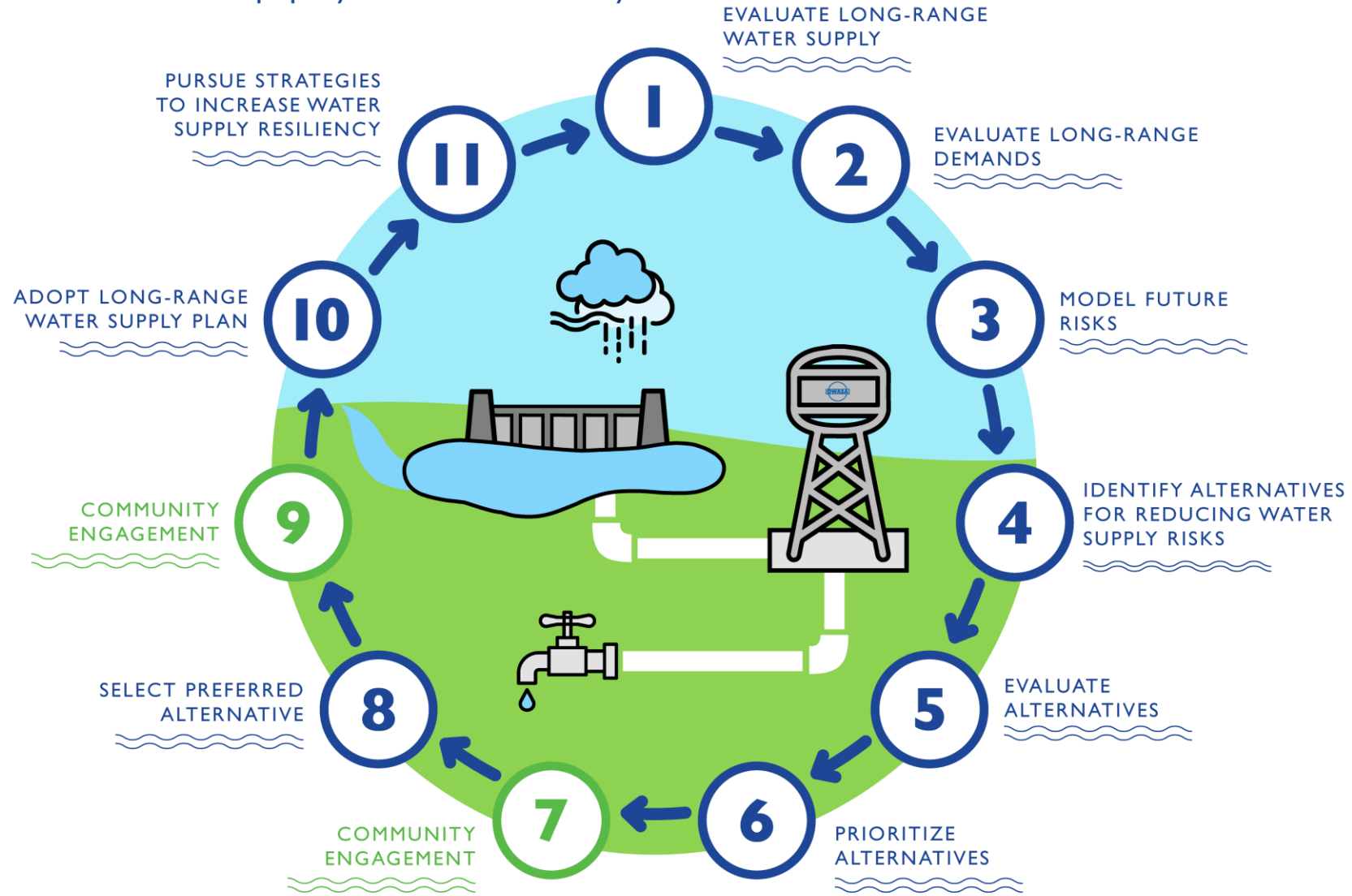
- We have a low risk of running out of water.
- Our largest vulnerability is in extended drought.
- Jordan Lake alternatives appear to be most cost-effective option for increasing resiliency.



Intake on Cane Creek Reservoir

DRAFT

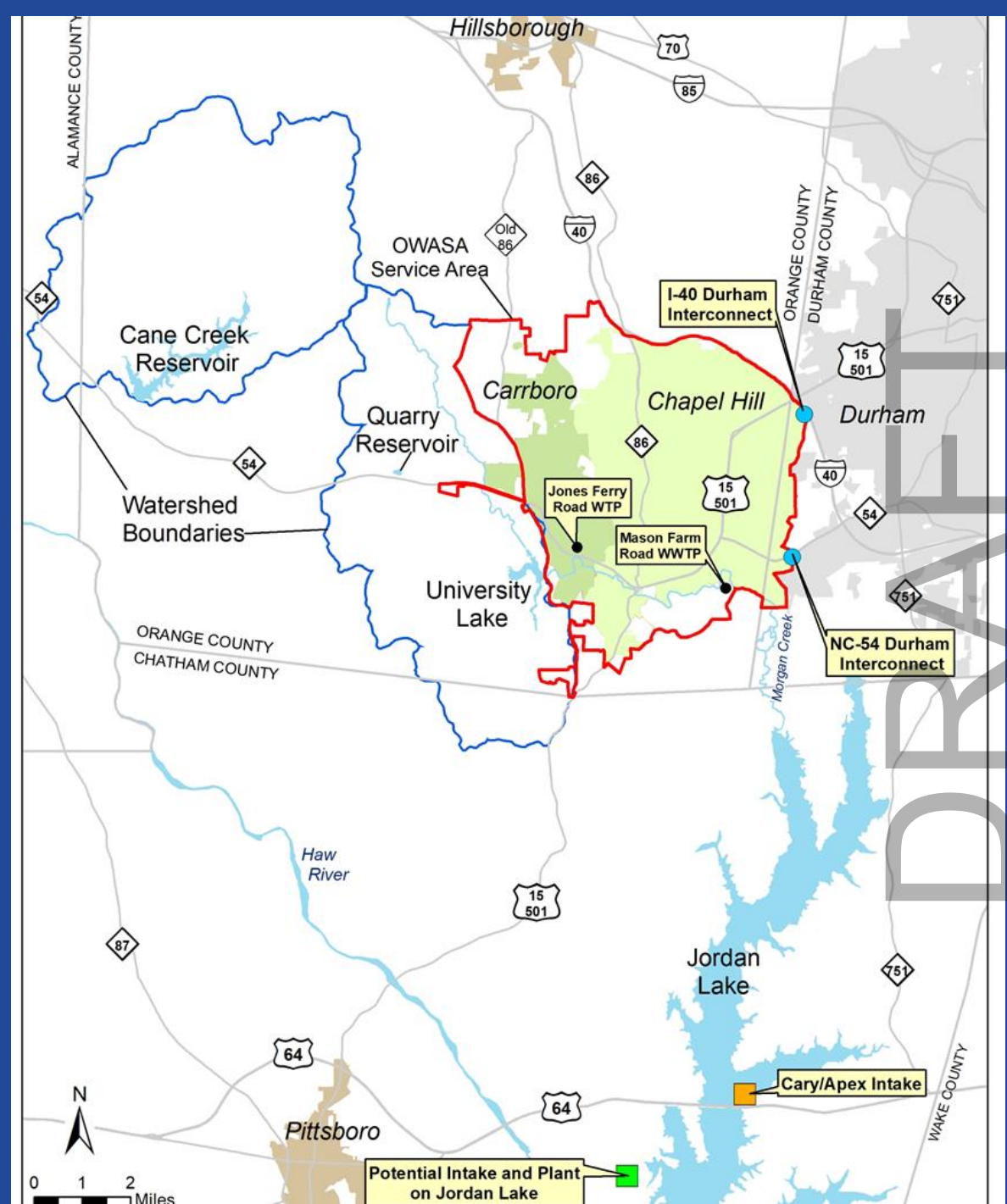
Ensuring Long-Range Water Supply Resiliency



DRAFT

OWASA's Water Supplies

- Local Water Supplies
 - Cane Creek Reservoir
 - University Lake
 - Quarry Reservoir
- Jordan Lake



Jordan Lake

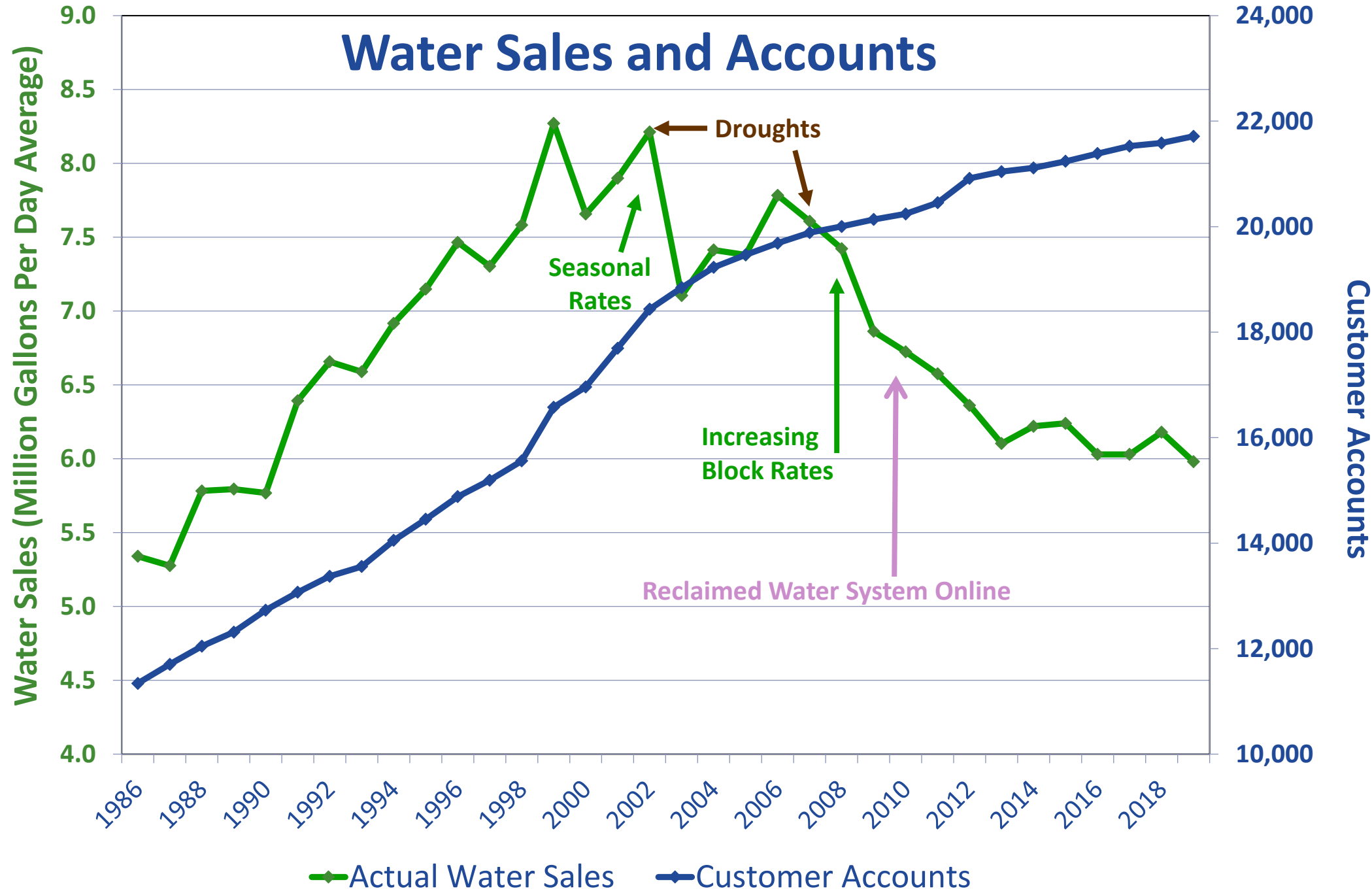
- Federal, multi-purpose reservoir
 - Flood control
 - Water supply
 - Downstream water quality
 - Recreation
- OWASA has had an allocation since 1988.
- Practice has been to only use Jordan Lake during water shortage
- We have no guaranteed access to Jordan Lake.



Jordan Lake

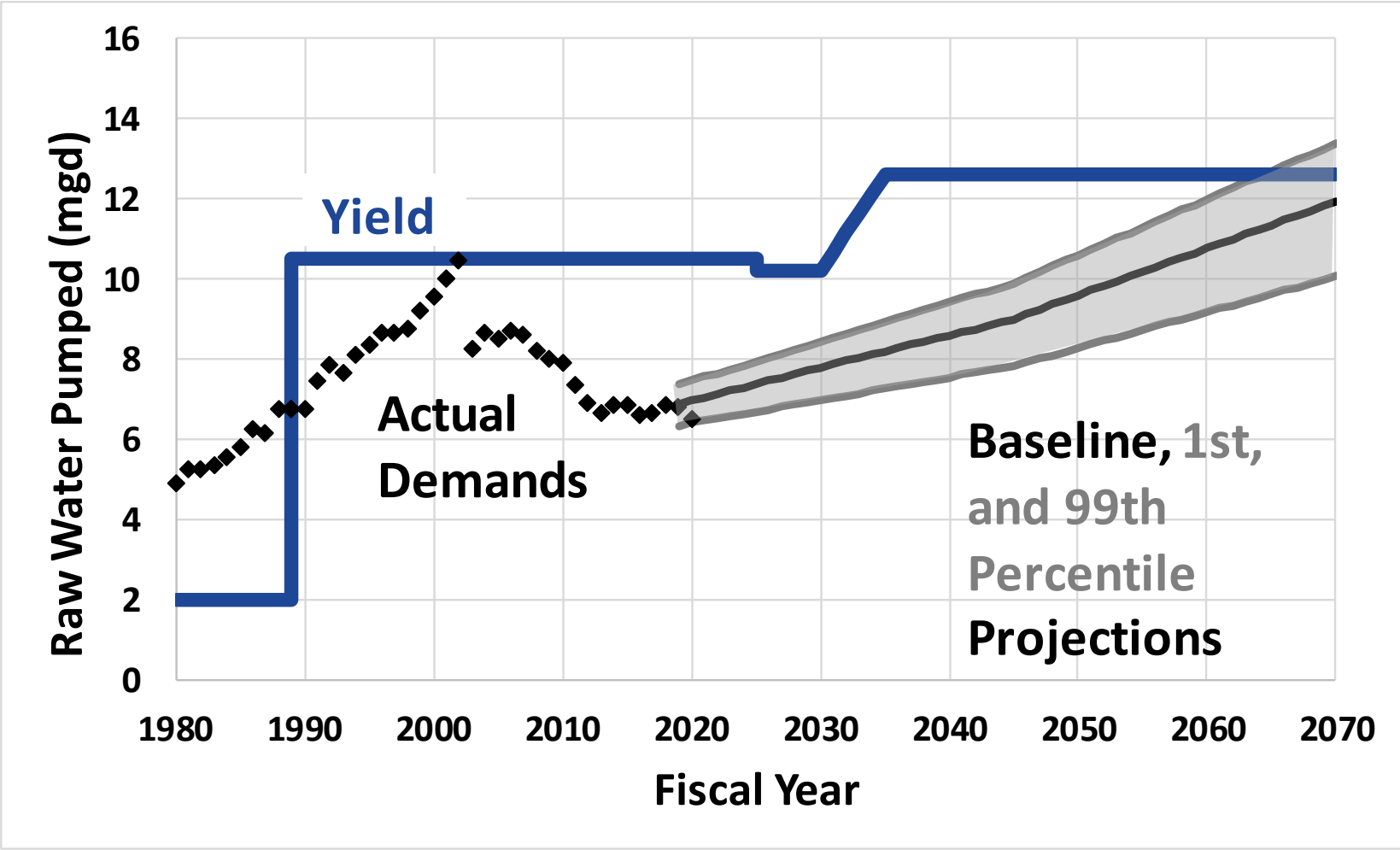
DRAFT

Water Sales and Accounts



DRAFT

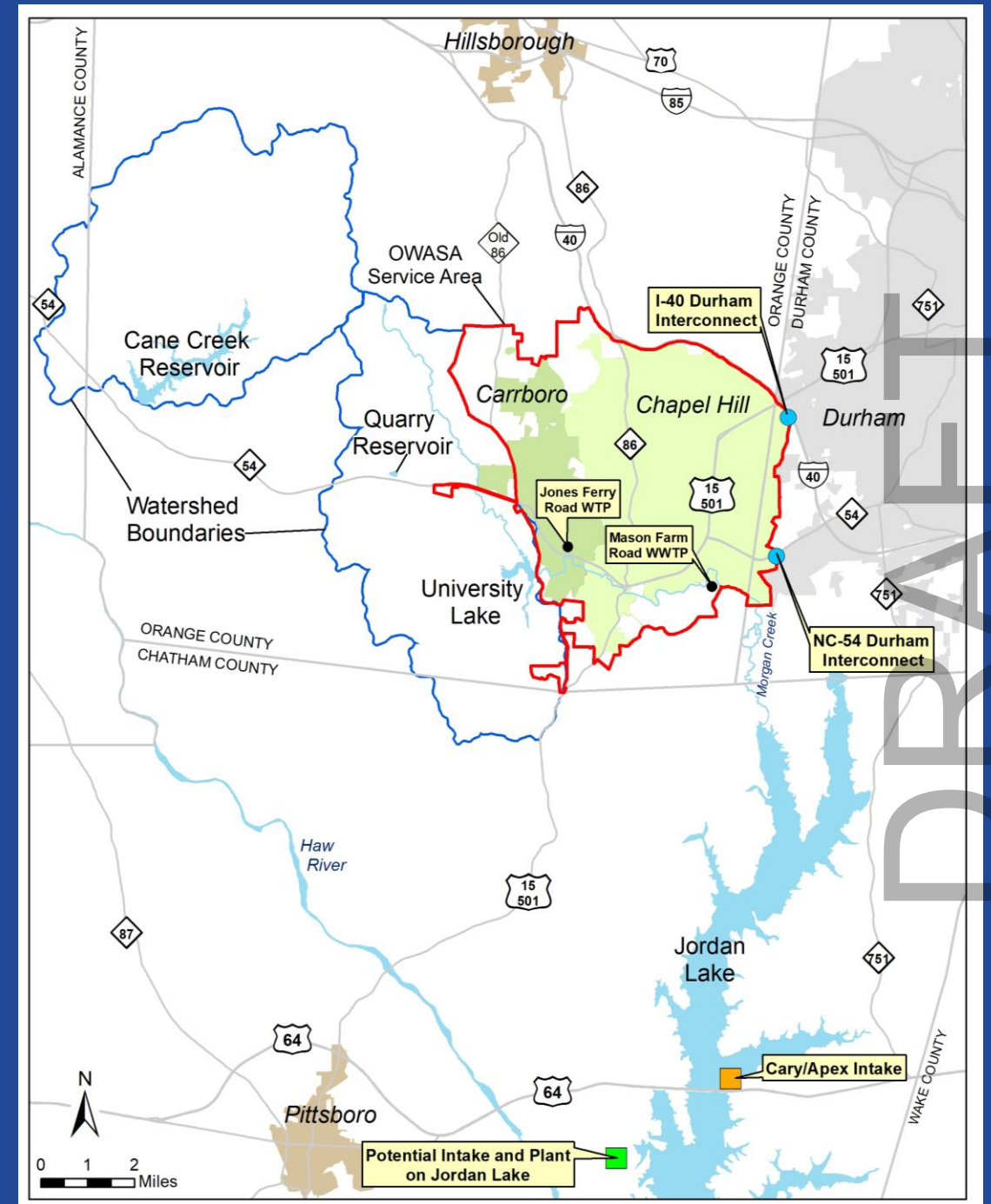
Our Water Supply Meets Demands Under Most Conditions



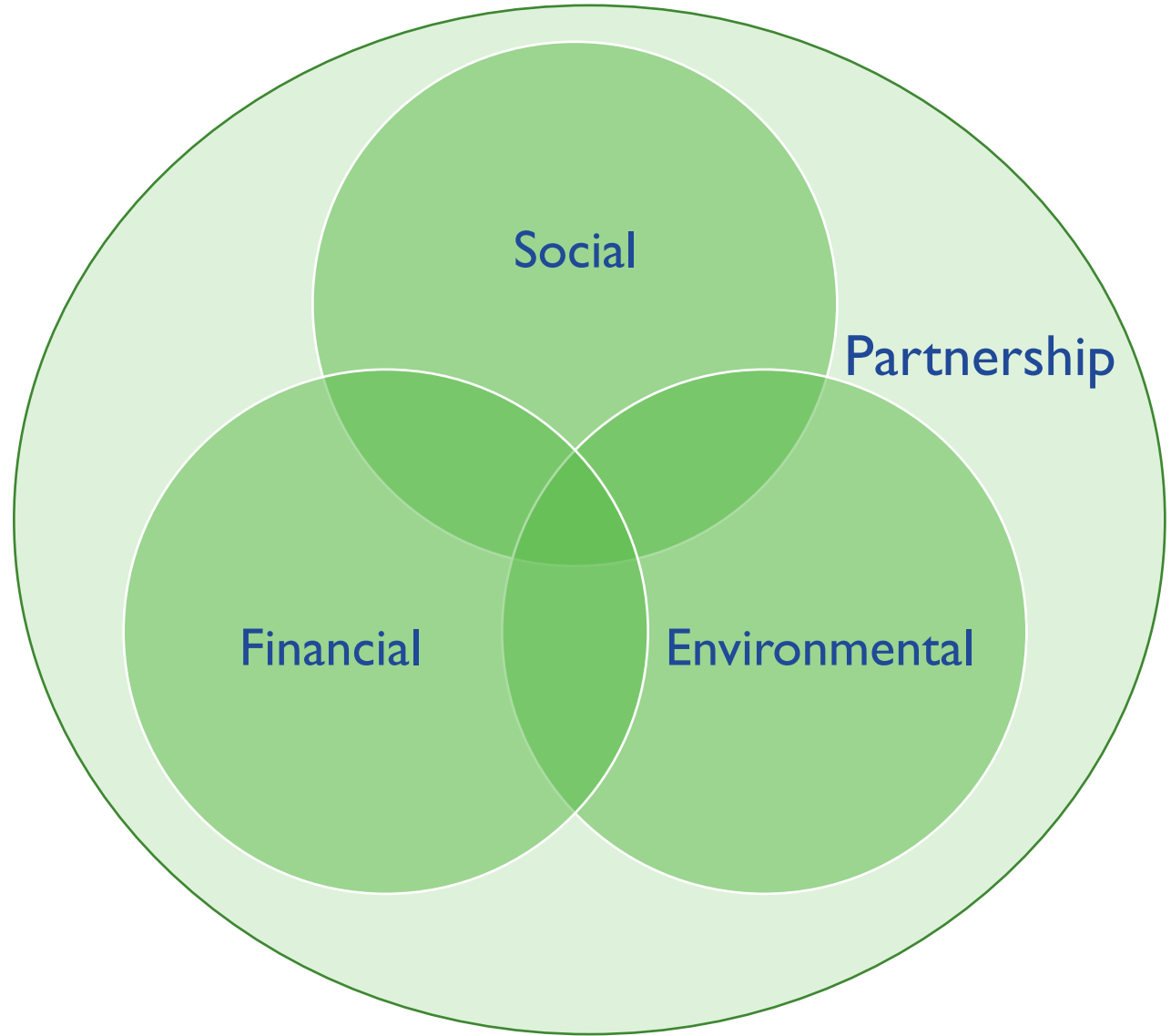
DRAFT

Our Water Supply Risk is Low

- Our predecessors set us up well
 - Supply
 - Conservation
- Cane Creek Reservoir has small watershed relative to its storage
- Long refill times following drought
- Our main vulnerability is extended drought



Sustainability Principles



DRAFT

Identifying Alternatives to Evaluate



Preliminary Alternatives Analysis



Demand
Management
Alternatives

Quarry
Reservoir
Alternatives

Potable Reuse
Alternatives

Jordan Lake
Alternatives


Supply
Alternative

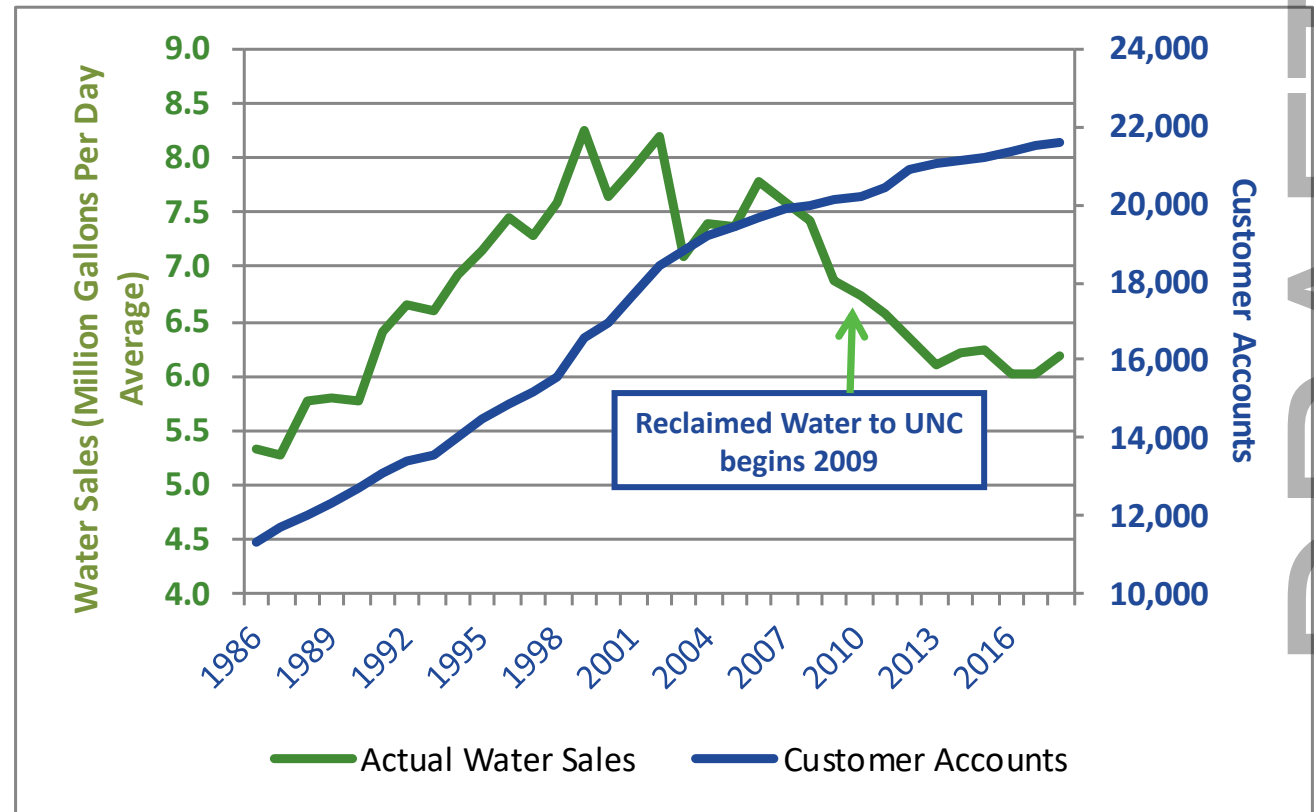
Supply
Alternative

Supply
Alternative

DRAFT

Demand Management Alternatives

- Do not meet long-term demands 
- Cost-effective strategies will be considered in Water Conservation Plan as Appendix to LRWSP



DRAFT

Supply Options

- Deep Quarry 
 - Does not diversity water supply
 - High capital cost
- Potable Reuse 
 - Options not legal or have questionable permitting process
 - High capital cost
- Jordan Lake
 - Meets long-term needs and diversifies our water supply
 - Lower capital costs
 - Several potential ways to use Jordan Lake

DRAFT

Where are we headed?

- Report to Board of Directors on community engagement - March
- Develop guiding principles to evaluate Jordan Lake alternatives – May/June
- Continue to evaluate Jordan Lake - FY22
 - Mutual aid agreements
 - Full partner in new intake and plant on western side of Jordan Lake
 - New agreement with Western Intake Partners to guarantee access to our Jordan Lake allocation
- Select draft preferred alternative - FY22
- Engage the community
- Develop final Long-Range Water Supply Plan with preferred alternative

DRAFT

Questions and Discussion

- Does the Council or community have any questions on our long-range water supply planning process?
- What feedback would you like shared with the OWASA Board of Directors regarding future evaluation of Jordan Lake water supply alternatives?
- Other?

Ruth Rouse/ rrouse@owasa.org

