

ACCESSIBLE PLAYGROUNDS

The Americans with Disabilities Act (ADA) requires that newly constructed and altered local government facilities be readily accessible to and usable by individuals with disabilities. This generally focuses on designing for people with physical accessibility issues. The minimum requirements to meet ADA compliance include:

- An accessible route from accessible parking to the playground facility must be at least 60" wide with a running slope of 5% or less and a cross slope of 2% or less. Accessible routes must be in the same area as the general circulation path.
- Within the play area accessible routes must be at least 36" wide, with the maximum 5% slope/2% cross slope, and overhead clearance of 80". At least one accessible route shall be provided within the play area connecting ground level play components and elevation play components, including entry and exit point of the play components.
- Within the play area safety surfacing allowing wheelchair maneuverability is required between the accessible route from entry to the play areas to at least one connection to each accessible play component, including any clear space requirement adjacent to accessible play components.
- Transfer stations shall be permitted to connect elevated play components where there are fewer than 20 elevated components. Larger number of elevated components requires direct access to 25% of those components. Transfer stations must be at least 24" wide x 14" deep, between 11" and 18" from the surface below, with a minimum 24" x 48" landing along the length of the transfer station and at least 1 means of support for transferring.

Playground companies offer a wide range of play products which are ADA compliant, and which can be combined with additional non-ADA compliant elements. Playground designers can ensure compliance in all elements of a new or modified play system, including the play element, railings, landings, access, and fall zones.

When existing playgrounds are not accessible, some modifications can be made to make these spaces more accessible including:



Landscape Structure, glider swing

- Safety surfacing from the access sidewalk to the equipment
- Modified swings – this can range from saucer type swings to swing seats that have back support and a harness
- Addition of ground level activities to be accessed from an accessible surface
- Include some brightly colored or color contrasting equipment to help children with vision problems see the equipment from a distance

Elements not included in the ADA requirements, but which would encourage people with disabilities to use the space include: handicap accessible bathrooms close to the playground, seating, paved spaces for wheelchair seating adjacent to standard benches,

SAFETY SURFACE OPTIONS

- Poured in place rubber – This surface requires the least maintenance but is the most expensive option
- Tiles – bonded rubber in 2'x2' tiles with interlocking sides
- Engineered wood chips – processed wood ground to a fibrous consistency, randomly sized with a maximum length of 2". This is not the same as wood bark which is often used as landscape mulch.

DEFINITION OF INCLUSIVE PLAYGROUNDS

Building to ADA code is a requirement for new playground installation. But the ADA code does not generally promote design requirements for people with disabilities other than accessibility related disabilities. For example, the ADA does not regulate to accommodate children with Down syndrome, sensory disorders, intellectual disabilities, or sight and hearing impairments. Inclusive playgrounds allow all children and their caregivers to play with their peers regardless of physical or social or cognitive needs. Playgrounds which are defined as inclusive include both the elements required to meet the Americans with Disabilities Act (ADA) and also to cater to children with social and sensory issues. Creating an inclusive playground does not necessarily mean removing an existing facility and starting from scratch. Many existing playgrounds can be modified and adapted to allow increased accessibility and inclusiveness. Inclusive playground elements should be incorporated into the main playground, not to be in a separate area of the park

INCLUSIVE PLAYGROUND COMPONENTS

- Include a variety of materials and textures available for touch – for example activity boards, sandy spaces for play, water play
- Incorporate music panels or instruments and other sensory play items
- Include elements with sliding, spinning, and swinging components
- Include adaptive swings
- Include cozy spaces for a small group of children
- Provide a calm quiet place to escape the busy playground
- Play space within view of but separated from larger pieces for quieter play
- Stress relief elements – equipment with kick or punch pads for kids to relieve stress
- Include gathering areas that can accommodate large groups of children
- Include ground level activities and wide even spaces
- Group play facilities that can be used with a friend, such as tandem slides or double swings
- Alter heights of equipment to accommodate different ages and risk levels
- Add shade and seating



EXISTING FACILITIES IN CHAPEL HILL

The consultant team examined play structures and space at 6 parks in Chapel Hill. Umstead Park and Southern Community Park are two of the playgrounds which included accessible elements. They could easily have a few more components added to make them more inclusive. But even in those parks some improvements should be made to expand access to equipment, especially where the accessible route involves leaving the fenced play area to access equipment via a walkway outside the fenced area. The other parks would need more extensive overhauls to make them accessible, and all the parks really need additional elements to make them more inclusive.

All of these facilities would be appropriate for a combination playground /splash area. And any of these parks could have splash pad features included with reconstruction of a new playground, or with expansion of existing well-functioning playgrounds.

Cedar Falls Park

Cedar Falls has a playground which is not inclusive and not completely accessible. There were plans to add an accessible playground adjacent to the existing facility. Though there is a lot of space at this park and the new playground could be located here, the accessible/inclusive playground shouldn't be a separate play space from where all other children can play. The existing playground does have some real benefits – it is shaded and wooded, the surfacing appears ADA compliant, and some of the equipment has transfer stations. This playground could be made more accessible and inclusive with improvements to the access route from the parking lot, expansion of and small adjustments to improve access into the play area, and replacement of bathroom facilities to be fully ADA compliant which should be done anyway to serve the other park facilities. One option would be to expand the playground area and to



reconfigure the trail to make it fully ADA compliant. This would allow continued use of the existing playground equipment while incorporating/adding inclusive and accessible features.

Trail from Cedar Falls parking lot to the playground. Trail could be relocated to the left to make it ADA compliant and to enlarge the playground area for expansion of inclusive equipment.

Elements required to improve this playground space:

- Clearing, regrading, and relocation of access trail:
- Expansion of playground facilities and surfacing
- Addition of an adaptive swing
- Accessible bathrooms
- Sanitary sewer service

Community Center Park

The playground at the Community Center Park is due for replacement and would be an ideal place for a very inclusive playground. This is a well-used park with good accessibility including accessibility from the Bolin Creek Greenway. It is close to the parking lot, there are some adjacent facilities such as the rose garden and gazebo that extend and expand the play experience, and there is some existing shade from mature trees. There is also a great hill adjacent to the playground which could be the basis for some embankment elements.



Landscape Structures embankment climber



*Playground balance and climbing structure
Museum of Life and Science, Durham*

There are two accessible single stall restroom facilities available to all park users, located inside the gym/pool building. Staff has noted that the bathroom facilities are insufficient for the number of people using the playground and other park facilities. Additional restroom facilities are located in the pool changeroom area and are not available to the general public. Staff has also noted the parking lot is overfull frequently.

Elements required to improve this playground space:

- Replacement of playground facilities and surfacing
- Additional accessible restroom facility

Hargraves Park

The playground area at Hargraves would be suitable for an inclusive/accessible park. There is good accessibility from the west within the park which is nicely shaded and already has a picnic shelter. There are accessible bathrooms about 300 feet away from the playground. Some adjustments to the site might be needed to provide compliant accessibility along the walkway that runs between the pool and the playground. Parking is available from two locations close to the playground area, but ADA compliant access is available only from the west. Holmes Childcare currently utilizes the park during specific weekday hours. There is a mid-age playground (5-12 y-o) which has poured in place surfacing, shade, benches. There is a need for better transfer stations in that playground. The elementary playground (5 y-o) gate is not accessible, and the wood bark surfacing is not engineered wood chip.

Elements required to improve this playground space:

- Replacement of sidewalk to provide ADA compliant access to all playgrounds and shelter
- Expansion of playground facilities
- Addition of adaptive swing
- Surfacing in under 5-year-old playground



Under 5 y-o play area, Hargraves Park



5-12 y-o play area, Hargraves Park

Homestead Park

Homestead Park would be an ideal place for a new inclusive accessible park. There is an existing playground at the park which is more accessible from the Stateside parking lot than the larger parking lot. The playground is at least 15 years old and nearing the end of its useful life. When it is replaced, it should include accessible and inclusive elements. This playground is old enough that improvement to fully accessible and inclusive facility should be for the whole playground. The playground is surrounded by trees which allows for some shade and nearby play in the woods. There are also nearby bathrooms and a shelter. There is more parking at this facility than at any other park in Chapel Hill.

Elements required to improve this playground space:

- Replacement of playground equipment and surfacing
- ADA compliant bathroom facilities



Homestead Park – wooded area adjacent to playground

Southern Community Park

This park contains a nicely fenced playground which has accessible play elements and incorporates a picnic shelter playground equipment which is in good condition, and there are shady and grassy areas for quiet or separate play. Some additional transition zones would help make more of the equipment accessible. The playground is large enough that additional accessible and inclusive features could be added. With replacement of some swings and additional equipment, this site would be ideal for a fully accessible and inclusive playground.



Southern Community Park - swings



There is sufficient parking at this site, and good accessibility from the parking lot. The bathrooms need improvement to meet ADA code and to be useful and fully inclusive. The ramp to the largest piece of equipment is accessible only by leaving the playground and coming back through a different gate – accessibility to each piece of equipment needs to be reworked so all equipment is accessible without going through gates or leaving the playground area.

Elements required to improve this playground space:

- Improvement of access to playground ramps
- Expansion of transfer stations
- Adaptive swing
- Accessible toilet facilities

Southern Community Park playground entrance – accessible ramp to play structure

Umstead Park



Umstead Park play structure

Umstead Park also has a playground facility which appears to be ADA compliant. There are appropriate handicap parking spaces, and a paved sidewalk between those spaces and the playground area approximately 250 feet away. The playground is located outside of the Resource Conservation District (RCD) area and is close to existing bathrooms and a picnic shelter. The bathrooms are not ADA compliant.

Elements required to improve this playground space:

- Improvement of access to playstructure ramp
- Addition of adaptive swing
- Accessible toilet facilities

DEFICIENCIES AT EXISTING PROPERTIES

A general shortfall at all the parks visited is the lack of truly accessible bathroom facilities. Many of the facilities are older (built in the 1970's or 1980's) and have tight spaces within which don't allow for turning and which don't have space to allow for an adult to help a disabled child. Nor are there any "family" restrooms to allow older children to be attended by a caregiver of a different gender. Additionally, none of the park bathroom facilities have door openers. It is worth noting that in the survey answered by 902 Chapel Hill residents, 68.5% of respondents listed new restrooms or improvements to restrooms in their top 5 "wants" for playground amenity features. More information about public input can be found in Section 6, the next section of this report.

Swings are some of the most popular playground elements, and none of the parks visited have adaptive swing equipment. This equipment can be added, or swings on existing equipment can be replaced with adaptive swings.

Park staff identified parking shortages the Community Center and Umstead parks. Any addition of facilities at these parks should include parking accommodation.

PUBLIC INPUT

A large component in the consideration of new recreation facilities in Town is receiving public input on what residents would like to see in their parks, and which parks they would like improved. This involves reaching out to the public to let them know what is being considered, listening to their concerns and wishes, quantifying the incoming information and using it toward determining a direction for improvement.

Various opportunities for public input were made available between early December 2022 and mid-February 2023. These opportunities ran the gamut from in person to virtual events, events specific to getting park improvement input to simply informing large groups of people meeting for other reasons.

A major component of public input came from a survey designed by the Town Parks & Recreation staff and distributed in person and via multiple websites.

PUBLIC INFORMATION SESSION FEEDBACK

Preferred locations for the various facilities presented:

Facility	First Choice	Second Choice	Third Choice
New inclusive playground	Hargraves Center Park (11 responses)	Community Center Park (6 responses)	Homestead Park (4 responses)
Inclusive upgrades to existing playgrounds	Cedar Falls Park (12 responses)	Southern Community Park (9 responses)	Umstead Park (6 responses)
Large Splash Facility	Community Center Park (13 responses)	Hargraves Center Park (11 responses)	Homestead Park (9 responses)
Small Splash Facility	Community Center Park Umstead Park (6 responses each)	Southern Community Park Eastwood Public Housing (5 responses each)	Homestead Park (4 responses) Hargraves Park (3 responses) Cedar Falls Park (2 responses)

Specific comments from people attending the public information sessions:

- Shade is needed at Umstead and Southern Community Parks
- Town needs an inclusive and adult playground
- Cedar Falls needs an older kid playground
- Legion Road should have a splash pad and an inclusive playground
- At Hargraves, redevelop the picnic area and expand the playground or add a splash pad
- At Hargraves, expand the gym and move the pool to expand the play area
- A natural themed splash pad will increase upwards the age of users that will take advantage of it

- Place the splash pad at a park that doesn't already have a pool to improve accessibility to water recreation for all neighborhoods
- Include interactive water play features like water wheels and streams with dams at multiple levels
- Parking is a problem at the Community Center
- The Hargraves playground area needs to be expanded
- Buy the Mitchell Lane property next to Hargraves to expand the playground
- Look at NY City's Governor's Island for playground inspiration
- Add inclusive features to every existing park
- Prefer upgrades to all parks versus one big new inclusive playground
- Add water fountain to walking trail
- All parks should be inclusive!

SURVEY DATA SUMMARIZED

There were 904 survey responses altogether. The surveys were distributed in person and via various websites. The survey was available on the Town's website, linked to web news reports, distributed to neighborhood listserves, and the link generally made available at all the in-person events listed in Appendix B.

Total survey responses: 906

Question	Yes	No	Unsure
Lives in Orange County	753	153	
Cares for Children or Grandchildren	772	129	
Supports development of an inclusive playground at a Town park	871	12	13
Currently travels outside of Chapel Hill to use an inclusive playground	234	672	
Supports development of a splash pad at a Town park	894	5	5
Currently travels outside of Chapel Hill to use a splash pad facility	448	457	

Note: Some respondents left some questions unanswered. No all calculations total 906 responses.

Of the 906 survey respondents, the majority prefer to have one larger splashpad location. All respondents answered this question, even those who do not support development of a Town splashpad.

- Prefer one large splashpad location (514 respondents)
- Prefer smaller spray features at more than one park location (273 respondents)
- No preference/Unsure (119 respondents)

The elements most wanted in an inclusive playground:

- Shade (716 respondents)
- New or renovated restrooms with changing facilities (618 respondents)
- Benches, tables (552 respondents)
- Public art (374 respondents)

Other elements that were desired in inclusive parks in order of respondents include: lighting, concessions, outdoor showers, splash pad, and fencing.

Amenities receiving a single vote include art instruction, dog waste station, heat lamps, a communication board, disc golf, and a natural area.

One comment received noted that parents of disabled children need playground fencing.

The elements most wanted in a splash pad facility:

- Shade (664 respondents)
- New or renovated restrooms with changing facilities (627 respondents)
- Benches, tables (579 respondents)
- Public art (328 respondents)

Other elements that were desired in inclusive parks in order of respondents include: lighting, outdoor showers, concessions.

Preferred park for a new inclusive playground: (top 3 choices)	Community Center Park 353	Homestead Park 216	Hargraves Center Park 118
Preferred park for a new splash facility: (top 3 choices)	Homestead Park 425	Community Center Park 360	Hargraves Center Park 124

Regarding style of splash pad, respondents were asked: In viewing the splash pad designs below, which do you prefer? Not all respondents answered this question. Total responses were 893, with the majority preferring a nature based look to the facility.



Splash Pad Design Preference	Respondents
Nature Based	518
Contemporary	247
Traditional	66
Theme	61

The full survey can be found in Appendix C.

PERMITTING

Improvements made at any of the parks or housing sites will involve getting permits from the Town and Orange County.

Improvements to the parks which do not include more than 2,500 sf of new building square footage could generally be permitted through a Zoning Compliance Permit. This permit takes between 3 and 6 months depending on the size of the project. The time frame would be at the low end for a pocket park splash pad but would be at the long end for a facility that included a new bathroom or equipment building and storm management facility.

SCHEDULES

Pocket Park Splash Pad

The time frame for permitting and construction of a pocket park splash pad would be about 5-6 months.

Starting the process, the Town could expect the design of a pocket park to take about a month before it would be sufficiently detailed to apply for permits. A simple park would require the following permits:

- Administrative ZCP approval through Town of Chapel Hill – Approximately 3 months
- Erosion Control permit through Orange County – Concurrent with ZCP

A flow-through system would not require Health Department permits.

The construction of a small park could be completed in about 6 weeks.

Destination Splash Pad Park

The time frame for permitting and construction of a destination splash pad park would be about 12-14 months.

Starting the process, the Town could expect the design of a destination park to take about 2 months before it would be sufficiently detailed to apply for permits. A destination park would be more likely to have buildings, increases in impervious surface, additional parking, and stormwater management facility requirements. It would require the following permits:

- ZCP approval through Town of Chapel Hill – Approximately 5-6 months
- Erosion Control permit through Orange County – Approximately 2 months concurrent with ZCP
- Health Department Approvals – State level – Approximately 1 month concurrent with ZCP

The construction of a destination park could be completed in about 3 months after approval of site permits.

SPLASH PAD – DESTINATION PARK

Assumes the inclusion of these elements:

- Splash pad surface and features
- Small building for equipment
- Service connection for water (assumes nearby main or water source)
- Recirculation system
- Drainage to sanitary sewer or a leach field
- Construction of accessible sidewalks
- Possibly includes construction of a new restroom/change facility
- Possibly includes construction of additional parking
- Possibly includes construction of a stormwater mitigation facility.



Sample small splash park



Sample medium splash park

Cost for a large destination splash pad would be in the \$ 2,020,000 - \$ 2,220,000 range.

Splash facility including equipment building, and surfacing, and 24+ spray features:	\$1,000,000-1,200,000
Restroom/change facility:	600,000
Parking Expansion:	200,000
Pedestrian access improvements:	15,000
Shade and seating:	105,000
Bioretention/Storm mitigation:	100,000
Expected annual recirculation system operating costs:	\$ 15,000

Cost for a medium splash pad would be in the \$ 1,670,000 - \$ 1,770,000 range.

Splash facility including equipment building, & Surfacing, 16-24 spray features:	\$ 650,000-750,000
Restroom/change facility:	600,000
Parking Expansion:	200,000
Pedestrian access improvements:	15,000
Shade and seating:	105,000
Bioretention/Storm mitigation:	100,000
Expected annual recirculation system operating costs:	\$ 15,000

SPLASH PAD – POCKET PARK

Assumes the inclusion of these elements:

- Splash pad surface and features
- Small shelter for equipment
- Service connection for water (assumes nearby main or water source)
- Drainage to sanitary sewer or a leach field
- Pedestrian access
- Possibly includes construction of a stormwater mitigation facility



Pocket Splash Pad example

Cost for a pocket park size splash pad would be in the \$ 430,000 - \$ 530,000 range.

Splash pad with 5-10 spray features:	\$ 170,000 - 250,000
Dedicated water / sewer taps:	165,000 – 185,000
Pedestrian access improvements:	15,000
Bioretention/Storm mitigation:	80,000
Expected annual operating costs:	\$40,000-\$60,000/per season in water and sewer costs, plus \$3,500 annually for maintenance expenses.

ACCESSIBLE INCLUSIVE PLAYGROUND – NEW CONSTRUCTION

Assumes the inclusion of these elements:

- Playground equipment equivalent to the size of the playground at Southern Community Park
 - o Approx. 15,000 sf
 - o Approx 30-40 play elements
- Safety surfacing
- Benches and picnic tables
- Tree and shrub installation
- A tent style shade structure
- Accessible sidewalks
- Possibly includes construction of additional parking
- Possibly includes construction of improved bathroom facilities
- Possibly includes construction of a stormwater mitigation facility

Cost for a new inclusive playground would be in the \$ 1,040,000 - \$ 1,165,000 range.

New playground and surfacing, and miscellaneous site work (grading, plantings, etc):	\$ 325,000-450,000
Restroom/change facility:	600,000
Pedestrian access improvements:	15,000
Bioretention/Storm mitigation:	100,000

ACCESSIBLE INCLUSIVE PLAYGROUND – EXISTING FACILITY EXPANSION/ADAPTATION

Assumes the inclusion of these elements:

- Additional Playground equipment and associated safety surfacing
- Benches
- Tree and shrub installation
- Accessible sidewalks

Cost for an inclusive accessible playground adaptation would be in the \$ 50,000 + range.

New playground equipment:	\$ 35,000
Pedestrian access improvements:	15,000

SPLASH PAD AND INCLUSIVE PLAYGROUND IMPROVEMENT COMBINATION

Assumes the inclusion of these elements:

- New playground facility including standard, accessible, and inclusive play elements
- Splash pad surface and approximately 20 splash features
- Small shelter for recirculation equipment
- Service connection for water (assumes nearby main or water source)
- Drainage to sanitary sewer or a leach field
- Pedestrian access
- Possibly includes construction of a stormwater mitigation facility
- New restroom facility with change rooms

Cost for an inclusive accessible playground and splash park combination would be in the \$ 1,995,000 – 2,220,000 range.

New playground equipment & surfacing	\$ 325,000- 450,000
Splash facility including equipment building, Surfacing, 16-24 spray features:	650,000-750,000
Restroom/change facility:	600,000
Parking Expansion:	200,000
Pedestrian access improvements:	15,000
Shade and seating:	105,000
Bioretention/Storm mitigation:	100,000
Expected annual recirculation system operating costs:	\$ 15,000

SPLASH PAD – DESTINATION PARK

During the preliminary presentations to the Parks, Greenways and Recreation Commission and to Council, the feedback the design team received was for support of the following elements:

- Co-locate the splash pad and playground to take advantage of shared elements like parking
- Leverage existing facilities as much as possible
- Transit access needs to be available, and connections to greenway trails should be stressed
- There was support for multiple locations, though maybe not all at the same time
- A moderately sized splash pad facility as the priority
- General consensus that a recirculation system would be a more sustainable way to install a splash pad

Survey respondents indicated these as the top preferences for parks where they'd like to see a splash pad facility built: (top 3 choices)

Homestead Park	425
Community Center Park	360
Hargraves Center Park	124

INCLUSIVE PLAYGROUND

During the preliminary presentations to the Parks & Recreation Commission and to Council, the feedback the design team received was for support of the following elements:

- A destination inclusive playground is needed in Town
- Also want more accessibility and inclusion at all the Town playgrounds
- Prioritize what could be approved and installed quickly
- Co-locate the splash pad and playground to take advantage of shared elements like parking
- Leverage existing facilities as much as possible
- Transit access needs to be available, and connections to greenway trails should be stressed

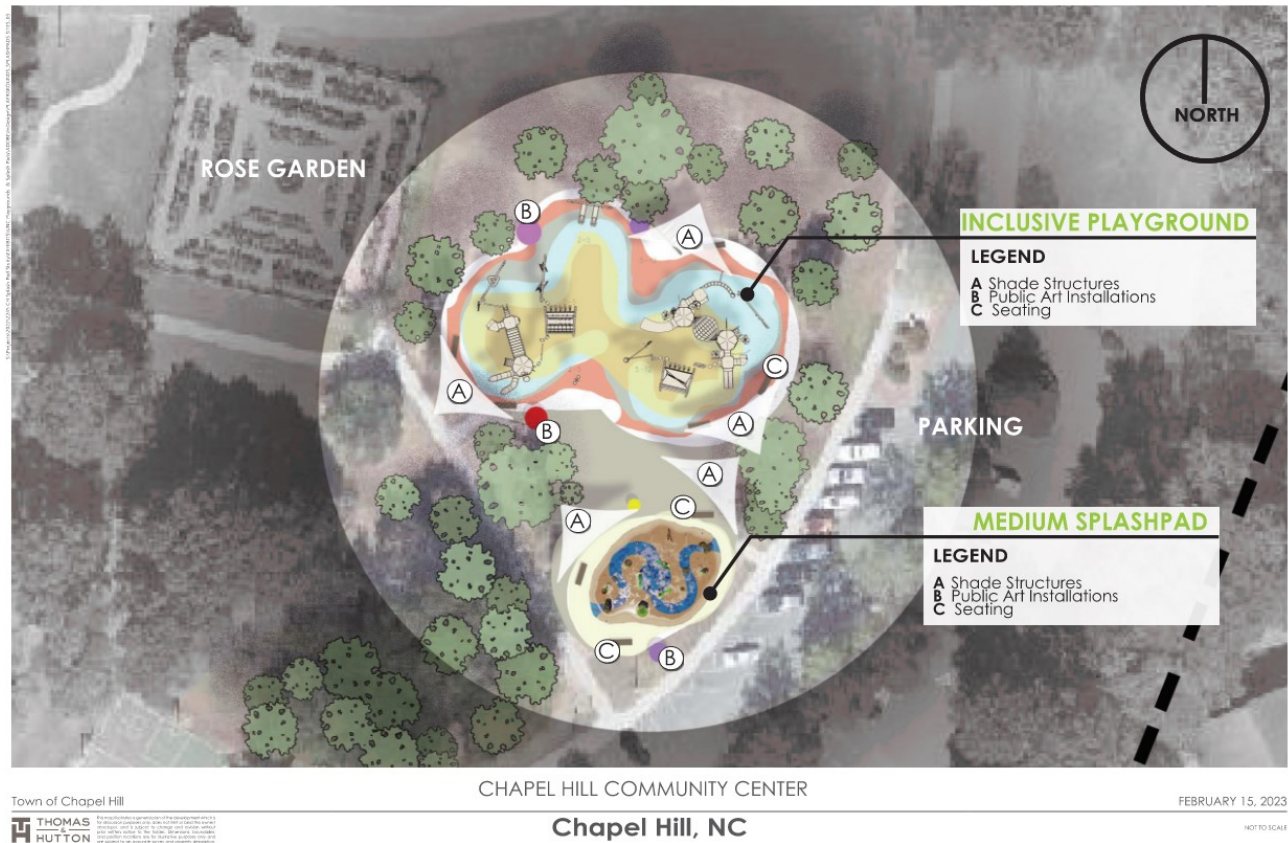
Survey respondents indicated these as the top preferences for parks where they'd like to see a new inclusive playground: (top 3 choices)

Community Center Park	353
Homestead Park	216
Hargraves Center Park	118

Conceptual layouts have been done to illustrate how these facilities would lay out at the three parks.

COMMUNITY CENTER PARK

The existing playground area would be expanded to accommodate a new inclusive playground and a new restroom facility. If both a playground and a small splash pad were to be located in this park, they could be located adjacent to each other and share seating and shade amenities.



COMMUNITY CENTER PARK

A large splash facility would be better located close to the building. The concrete deck space is currently not efficiently used, and by locating the larger splash facility in that area the splash facility would be close to utilities and parking. The change and restroom facilities in the pool cannot be accessed from this area unless there is a lifeguard on duty. Staff at the park have also noted that the restroom facilities are not adequate for all park users. In this case, a new restroom / change facility would be recommended in conjunction with the larger splash pad. That restroom facility would be incorporated with some change space and would be located between the playground and the splash pad for convenience to all park users.



CHAPEL HILL COMMUNITY CENTER

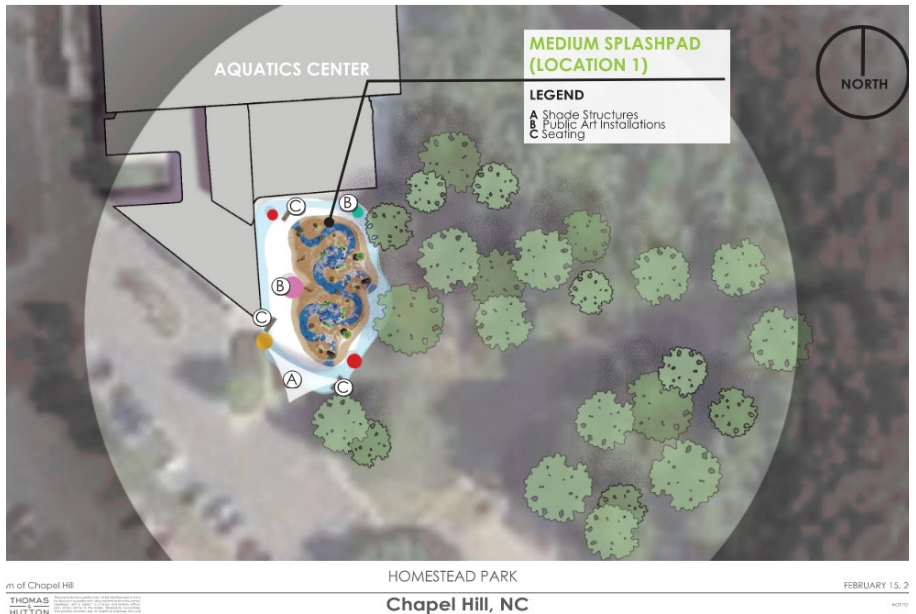
Chapel Hill, NC

FEBRUARY 15, 2017

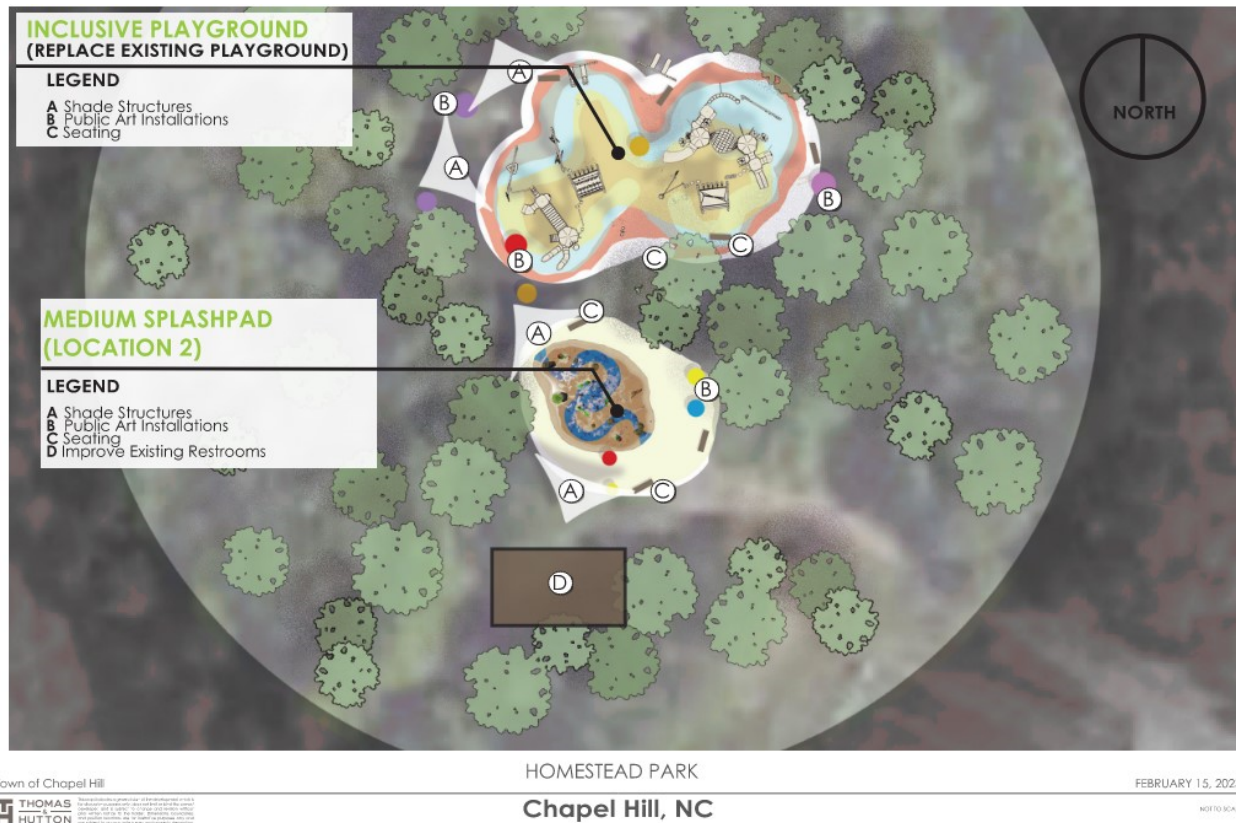
NOT TO SCALE

HOMESTEAD PARK

A larger splash pad would be located in the grassy open space adjacent to the aquatic center. This is a flat open area close to a lot of existing parking and splash pad users could potentially use restroom and changing facilities within the aquatic center.



A new inclusive playground at this park would be located in the same place as the existing playground. There is space nearby where a small splash pad could be accommodated at the same time or at a future time. There is an existing restroom facility and picnic shelter nearby. Although that facility does have a covered area, the restroom is not accessible and there are no change facilities. The recommendation would be to replace the existing restrooms with a new restroom/change facility to serve the playground and other park users.



HARGRAVES COMMUNITY CENTER PARK

Splash pad and inclusive playground improvements at this park would all be located south of the existing pool. A small splash pad could be added here. A larger splash pad would likely involve removing or relocating some of the playground. The park would not accommodate all three facilities but could accommodate a new inclusive playground as well as either a small or medium size splash facility.



BUDGET CONSTRAINTS

The Town has allocated ARPA funds of \$285,000 to add adaptive features to multiple/all playgrounds in the park system. They have also allocated ARPA funds of \$500,000 for a new inclusive playground at the Community Center Park. This choice is well supported by the public. The survey response supports the Community Center Park as the preferred location for a new inclusive playground.

The funds being provided for playground design and installations are a solid first phase of funding for playground improvements. Priority for funding of next phases should include amounts to provide a restroom/comfort station at the Community Center Park, restroom replacement at the other parks, and a new medium splash pad facility at either Homestead Park or at the Community Center Park. Public response indicates the two most popular locations for the splash pad would be at the Community Center Park or at Homestead Park. There would be some cost efficiencies by combining a splash pad with a new playground facility at the same park. Initial feedback from the Parks Commission supports these two locations (Homestead Park and Community Center Park) and supports a combined improvement at the same park. Improvements to restroom facilities are already in the Town capital improvement budget.

ANSWERS TO COMMON QUESTIONS

Can the splash pad and playground be incorporated into the same facility so that the splash area can be used as an expanded playground area when the water is off?

The splash pad will have a different surface than the playground. The splash pad will have a concrete or hard non-slip surface and will not accommodate any fall zones. Additionally, any vertical elements within the splash park would be unsafe for climbing.

The splash pad area could be used for other purposes that do not include a playground extension. Above ground splash elements can be removed in the off season, leaving a surface which could accommodate temporary uses such as performance events, a small 1-day marketplace, or an outdoor classroom. That space could even support temporary tent coverage to make it useful in rainy weather.

Does water run constantly at the splash pad?

The system would be set to turn on during normal operating hours (for example 10 am – 7 pm). During that time water would be available to the spray elements when an activator button is pressed. Water generally runs for 4-5 minutes and then automatically shuts off. During the season, the recirculation system runs constantly but water does not spray unless the activation button is pressed. That means that during the season any rainwater falling in the splash pad also drains into the recirculation system.

Can shade be provided by trees?

Trees for shade would be great around a playground, though it will be some years before any new trees would be large enough to provide significant shade. Trees around the splash pad area are not recommended. Falling leaves stain the surface, and leaves and tree debris in general clog the recirculation system. Even if there are no trees planted nearby, a debris trap is recommended to reduce maintenance on the recirculation system.

Is fencing required, or allowed?

Fencing is not required for safety for splash pad facilities. If the Town prefers to limit users or to charge entry fees, a fence would be necessary. Fencing is allowed but would add cost to the project construction. Some fencing could be added to limit access to unsafe areas such as parking lots.

Is the splash pad navigable by walkers and wheelchairs?

Yes. The slope on the splash pad surface is <2%, the surface is rigid and smooth and accommodates walkers and wheelchairs. It is even possible to provide pool wheelchairs for use at the splash pad. These chairs are generally medical grade pvc plastic with graphite hand rims / wheels and mesh seating. They are totally submersible.

Will rainwater collect in the splash pad area if the water is not operating?

The site slopes toward drains, and even when the system is shut off any rainwater will be collected in the drains. When the recirculation system is not on, a rainwater trap opens, and water and small debris wash into the stormwater system. There shouldn't ever be standing water in the splash pad area.

Does the North Carolina Department of Health require visitors to shower before entering splash pad?

The NC DPH does not require showers before entering a splash pad that is not attached to an aquatic facility. If the splash pad is attached to an aquatic facility, the splash pad would need to follow aquatic facility guidelines in place. The splash consultant would recommend an outdoor fountain/drinking fountain combo for any recirculation system splash pad design even though it is not required. The cost for such an element would be \$6,000-\$10,000.

SECTION .2500 - PUBLIC SWIMMING POOLS

15A NCAC 18A .2543 WATER RECREATION ATTRACTIONS

(a) Upon written request and approval by the Department, water recreation attractions including water slides, wave pools, rapid rides, lazy rivers, artificial swimming lagoons, and other similar features may deviate from the requirements of this Section with respect to pool profile, depth, freeboard, flow dynamics and surface skimming systems. The Department shall approve the request upon a showing that such deviation performs in a manner equally to or more protective of public health than the requirements of this Section based upon design plans and technical specifications by the designing engineer or equipment manufacturer. Water recreation attractions shall meet all other requirements of this Section.

(b) Water slide landing pools with a capacity of less than 60,000 gallons shall have a circulation and filtration system capable of turning over the entire pool capacity every two hours. Where automatic chemical controllers are used the turnover time shall be no more than three hours. Landing pool dimensions shall be consistent with the slide manufacturer's recommendation.

(c) When waterfalls are incorporated in water recreation attractions, they shall be constructed with no handholds or footholds to a height of four feet to discourage climbing.

(d) Interactive play attractions shall be constructed and operated in accordance with the rules of this Section and shall comply with the following:

- (1) The recirculation system shall contain a water capacity equal to at least three minutes of maximum flow of all feature pumps and filter circulation pumps combined and shall not be less than 1,000 gallons. Where the water capacity exceeds 10,000 gallons, the minimum capacity shall be based on the lesser of three minutes of maximum feature flow or 7.5 gallons per square foot of splash zone watershed drained to the surge container.
- (2) Access shall be provided to the surge water container.
- (3) A filter circulation system shall be provided and shall be separate from the feature pump system except that both systems can draw water from a common drain pipe if the drain and pipe are sized to handle the flow of all pumps without exceeding the flow velocities specified in Rule .2518 of this Section.
- (4) The filter circulation system shall draw water from the surge container through a variable height surface skimmer and a bottom drain located no more than 6 inches from the bottom of the container.
- (5) The filter circulation system shall filter and return the entire water capacity in no more than 30 minutes and shall operate 24 hours a day.
- (6) Automatic chemical controllers shall be provided to monitor and adjust the disinfectant residual and pH of the water contained in the system.
- (7) The disinfectant residual in interactive play attractions shall be maintained at a level of at least two parts per million of free chlorine. Chlorine feeders shall be capable of producing 12 parts per million of free chlorine in the filter circulation piping.
- (8) Valves shall be provided to control water flow to the features in accordance with the manufacturers' specifications.
- (9) Splash zones shall be sloped to drains sized and located to remove all feature water to the surge tank without water accumulating on the surface.
- (10) Deck or walkway space is not required outside the splash zone.
- (11) Dressing and sanitary facilities shall not be required.
- (12) Interactive play features shall not be required to have a fence except the wading pool fence requirements shall apply to interactive play features located inside a swimming pool enclosure.

- (13) The safety provisions of Rule .2530 of this Section shall not apply except a sign shall be posted prohibiting pets and glass containers.
- (14) Interactive play attractions built prior to April 1, 2004, that do not comply with these design and construction requirements shall be permitted to operate as built if no water quality or safety violations occur under Rules .2535 and .2537 of this Section.

(e) Training pools shall meet the requirements for swimming pools with the following exceptions:

(1) Training pools shall be equipped with a filter circulation system that filters and returns the entire pool capacity in no more than two hours.

(2) The free chlorine residual in training pools shall be maintained at no less than two parts per million. (f) Artificial swimming lagoons shall meet the requirements for public swimming pools except as specified in this Rule:

- (1) Pool shells shall not be required. Liners shall meet the requirements of Rule .2514 of this Section.
- (2) Underwater components of the artificial swimming lagoon or float lines with openings greater than one-half inch shall not be allowed in swimming zones.
- (3) All swimming zone float rope components shall be a color contrasting with the pool liner. Artificial swimming lagoons are not required to meet the float rope location requirements of Rule .2523(e) of this Section regarding breakpoint and slope. A contrasting color band shall not be required on the liner under the rope.
- (4) Each swimming zone and water feature shall meet water quality standards as required in Rule .2535 of this Section. If the water quality of a swimming zone or water feature does not meet the requirements of Rule .2535 of this Section, the operator shall close the swimming zone or water feature and post a sign at the entrance of the swimming zone with legible letters of at least four inches (10 cm) in height stating "ATTENTION: THE SWIMMING ZONE IS CLOSED. SWIMMING IN THIS AREA IS NOT PERMITTED AT THIS TIME." The swimming zone or water feature shall remain closed until the water quality in the swimming zone or water feature complies with the requirements of Rule .2535 of this Section.
- (5) All non-swimming zones shall be maintained so the bottom of the lagoon is visible in all areas.
- (6) A sign shall be posted at all entrances to the artificial swimming lagoon with legible letters of at least four inches (10 cm) in height stating "NOTICE – NO SWIMMING ALLOWED OUTSIDE OF DESIGNATED SWIMMING ZONES."
- (7) Signage shall be posted indicating swimming zones.
- (8) Depth markings and no diving markers shall be provided on decks in swimming zones as required in Rule .2523 of this Section. Signs shall be posted at all entrances to swimming zones with legible letters of at least four inches (10cm) in height stating "NO DIVING" and stating the maximum depth of the swimming zone in Arabic numerals and shall include the word "feet" or the symbol "ft" to indicate the unit of measure.
- (9) Decks at zero entry areas located within swimming zones are not required to meet the minimum deck area requirements in Rule .2522 of this Section. Access to swimming zones shall be provided for emergency vehicles and personnel. No decks shall be required in non-swimming zones. The requirements of Rule .2515(g)(1) of this Section shall not apply to swimming zones and Rule .2515(g) of this Section shall not apply to non-swimming zones.
- (10) Swimming zones shall meet all safety provisions as set out in Rule .2530 of this Section. Where swimming zones are separated by more than 75 feet, each swimming zone shall separately meet all safety provisions. Non-swimming zones are exempt from the requirements in Rule .2530 of this Section.
- (11) A water treatment system that does not meet the requirements of Rules .2518 and .2519 of this Section shall be approved by the Environmental Health Section of the Department's Division of Public Health when the treatment system performs in a manner equal or superior to the systems described in Rules .2518 and .2519 of this Section in terms of water clarification, disinfection, and removal of debris, and results in a disinfectant residual and pH level as required in Subparagraph (f)(4) of this Rule.
- (12) The requirements of Rule .2529 of this Section and Rule .2526(e)–(h) of this Section shall not apply. Sanitary facility requirements shall comply with the 2018 North Carolina State Building Code: Plumbing

Code, which is incorporated by reference, including any subsequent amendments or editions and available free of charge at: <https://codes.iccsafe.org/content/NCPC2018>.

- (13) Bacteriological samples shall be collected by the operator in non-swimming zones and tested weekly. One sample shall be collected for every 250 feet of shoreline, with no more than 300 feet and no less than 25 feet between any two sampling locations. The samples shall be collected at least one foot below the surface, in at least three feet of water. The samples shall be analyzed by a laboratory accredited by the North Carolina Drinking Water Laboratory Certification Program, the North Carolina Wastewater/Groundwater Laboratory Certification Program, or the National Environmental Laboratory Accreditation Program. The test results shall be maintained as part of the records required in Rule .2535(11) of this Section.
- (14) When the result of any test required by Subparagraph (f)(13) of this Rule exceeds the standards in Rule .3402(a) of this Subchapter, the operator shall:
 - (A) notify the local health department that permitted the artificial swimming lagoon and resample the water within 24 hours of receipt of the result from the laboratory; and
 - (B) close all non-swimming zones and post a sign at all non-swimming zone entrances with legible letters of at least four inches (10 cm) in height stating "ATTENTION: ALL NON- SWIMMING ZONES ARE CLOSED. RECREATIONAL ACTIVITIES IN THIS AREA ARE NOT PERMITTED AT THIS TIME." This sign shall remain posted until resampling determines that bacterial levels do not exceed the standards in Rule .3402(a) of this Subchapter.
- (15) Non-swimming zones shall not be required to comply with the lighting requirements of Rule .2524 of this Section. When night swimming is allowed, the operator shall provide lighting in swimming zones as required for public swimming pools.
- (16) The requirements of Rule .2537(b)(16) of this Section shall not apply. Submersible pumps or mechanical pool cleaning equipment shall not be used in swimming zones or within 25 feet of swimming zones when a swimming zone is open to bathers. If submersible pumps or mechanical pool cleaning equipment are used in non-swimming zones when a non-swimming zone is open to users, the following conditions shall apply:

(17)

History Note:

- (A) A registered design professional shall provide design plans or technical specifications that demonstrate that any underwater suction outlets perform in a manner that is equally protective or more protective than the Pool and Hot Tub Alliance's ANSI/APSP/ICC-7 2013 Standard for Suction Entrapment Avoidance in Swimming Pools, which is incorporated by reference, including any subsequent amendments or editions, and available for a fee of one hundred sixty-five dollars (\$165.00) at <https://www.apsp.org/store1>; and
- (B) All floating components of submersible pumps or mechanical pool cleaning equipment shall be labeled with a sign above the water line with legible letters of at least four inches (10 cm) in a contrasting color stating: "DANGER: MECHANICAL EQUIPMENT IN USE. STAY BACK 25 FEET."

The requirements of Rules .2521 and .2516(f)(1) of this Section shall not apply to non-swimming zones.

Authority G.S. 130A-280; 130A-282; S.L. 2011-39; S.L. 2019-88;

Eff. April 1, 1999;

Amended Eff. March 1, 2004;

Pursuant to G.S. 150B-21.3A, rule is necessary without substantive public interest Eff. July 20, 2019;

Temporary Amendment Eff. December 3, 2019; Amended Eff. October 1, 2020.

15A NCAC 18A .2544 SPECIAL PURPOSE AND THERAPY POOLS

(a) Special purpose and therapy pools shall comply with the requirements for public swimming pools and spas except as specified in this Rule.

(b) Float tanks:

- (1) The requirement in Rule .2522 of this Section for a deck or walkway continuous with the top of the pool wall does not apply to isolation float tanks where a clear floor space of at least eight feet by four feet is provided adjacent to the entrance to the tank.
- (2) The requirement in Rule .2532 of this Section for the minimum ceiling height of 7 1/2 feet above the rim of the pool does not preclude use of a canopy of a lower height to enclose an isolation float tank provided the canopy can be opened to allow users a standing entry and exit from the float tank.
- (3) The minimum lighting requirement in Rule .2524 of this Section does not apply to float tanks provided lighting is available for cleaning and is sufficient to provide visibility for entry and exit from the float tank.
- (4) The requirements in Rule .2518 of this Section that recirculation pumps operate 24 hours per day do not preclude turning off the pump during float sessions when a sanitizing cycle is provided that filters and disinfects the entire capacity of the float tank system at least twice before every user

enters the pool. When the float tank is not being used, the pump shall either operate continuously or

intermittently to filter and disinfect the capacity of the pool twice every hour.

- (5) The requirement in Rule .2518 of this Section that pool pumps three horsepower or smaller meet NSF/ANSI Standard 50 is not applicable when the mineral content of the brine in a float tank is incompatible with standard pool pumps. Pumps that do not meet NSF/ANSI standard 50 shall be approved by the Department when the viscosity of the mineral solution in the float tank requires a pump impeller or magnetic coupling designed to pump viscous liquids. Electrical safety of such pumps shall be verified by an independent third-party testing lab to meet applicable Underwriters Laboratories (UL) Standards.
- (6) The requirement in Rule .2532 of this Section for a caution sign at spas with a water temperature above 90 degrees Fahrenheit is not applicable to float tanks that do not exceed an operating temperature of 95 degrees Fahrenheit. Float tanks that exceed an operating temperature of 95 degrees Fahrenheit shall have a posted sign with the same warnings required for hot spas except references to spas may be reworded to reference float tanks or float spas.

15A NCAC 18A .2543 WATER RECREATION ATTRACTIONS

(a) Upon written request and approval by the Department, water recreation attractions including water slides, wave pools, rapid rides, lazy rivers, artificial swimming lagoons, and other similar features may deviate from the requirements of this Section with respect to pool profile, depth, freeboard, flow dynamics and surface skimming systems. The Department shall approve the request upon a showing that such deviation performs in a manner equally to or more protective of public health than the requirements of this Section based upon design plans and technical specifications by the designing engineer or equipment manufacturer. Water recreation attractions shall meet all other requirements of this Section.

(b) Water slide landing pools with a capacity of less than 60,000 gallons shall have a circulation and filtration system capable of turning over the entire pool capacity every two hours. Where automatic chemical controllers are used the turnover time shall be no more than three hours. Landing pool dimensions shall be consistent with the slide manufacturer's recommendation.

(c) When waterfalls are incorporated in water recreation attractions, they shall be constructed with no handholds or footholds to a height of four feet to discourage climbing.

(d) Interactive play attractions shall be constructed and operated in accordance with the rules of this Section and shall comply with the following:

- (1) The recirculation system shall contain a water capacity equal to at least three minutes of maximum flow of all feature pumps and filter circulation pumps combined and shall not be less than 1,000 gallons. Where the water capacity exceeds 10,000 gallons, the minimum capacity shall be based on the lesser of three minutes of maximum feature flow or 7.5 gallons per square foot of splash zone watershed drained to the surge container.
- (2) Access shall be provided to the surge water container.
- (3) A filter circulation system shall be provided and shall be separate from the feature pump system except that both systems can draw water from a common drain pipe if the drain and pipe are sized to handle the flow of all pumps without exceeding the flow velocities specified in Rule .2518 of this Section.
- (4) The filter circulation system shall draw water from the surge container through a variable height surface skimmer and a bottom drain located no more than 6 inches from the bottom of the container.
- (5) The filter circulation system shall filter and return the entire water capacity in no more than 30 minutes and shall operate 24 hours a day.
- (6) Automatic chemical controllers shall be provided to monitor and adjust the disinfectant residual and pH of the water contained in the system.
- (7) The disinfectant residual in interactive play attractions shall be maintained at a level of at least two parts per million of free chlorine. Chlorine feeders shall be capable of producing 12 parts per million of free chlorine in the filter circulation piping.
- (8) Valves shall be provided to control water flow to the features in accordance with the manufacturers' specifications.
- (9) Splash zones shall be sloped to drains sized and located to remove all feature water to the surge tank without water accumulating on the surface.
- (10) Deck or walkway space is not required outside the splash zone.
- (11) Dressing and sanitary facilities shall not be required.
- (12) Interactive play features shall not be required to have a fence except the wading pool fence requirements shall apply to interactive play features located inside a swimming pool enclosure.
- (13) The safety provisions of Rule .2530 of this Section shall not apply except a sign shall be posted prohibiting pets and glass containers.
- (14) Interactive play attractions built prior to April 1, 2004, that do not comply with these design and construction requirements shall be permitted to operate as built if no water quality or safety violations occur under Rules .2535 and .2537 of this Section.

(e) Training pools shall meet the requirements for swimming pools with the following exceptions:

(1) Training pools shall be equipped with a filter circulation system that filters and returns the entire pool capacity in no more than two hours.

(2) The free chlorine residual in training pools shall be maintained at no less than two parts per million. (f) Artificial swimming lagoons shall meet the requirements for public swimming pools except as specified in this Rule:

- (1) Pool shells shall not be required. Liners shall meet the requirements of Rule .2514 of this Section.
- (2) Underwater components of the artificial swimming lagoon or float lines with openings greater than one-half inch shall not be allowed in swimming zones.
- (3) All swimming zone float rope components shall be a color contrasting with the pool liner. Artificial swimming lagoons are not required to meet the float rope location requirements of Rule .2523(e) of this Section regarding breakpoint and slope. A contrasting color band shall not be required on the liner under the rope.
- (4) Each swimming zone and water feature shall meet water quality standards as required in Rule .2535 of this Section. If the water quality of a swimming zone or water feature does not meet the requirements of Rule .2535 of this Section, the operator shall close the swimming zone or water feature and post a sign

at the entrance of the swimming zone with legible letters of at least four inches (10 cm) in height stating "ATTENTION: THE SWIMMING ZONE IS CLOSED. SWIMMING IN THIS AREA IS NOT PERMITTED AT THIS TIME." The swimming zone or water feature shall remain closed until the water quality in the swimming zone or water feature complies with the requirements of Rule .2535 of this Section.

- (5) All non-swimming zones shall be maintained so the bottom of the lagoon is visible in all areas.
- (6) A sign shall be posted at all entrances to the artificial swimming lagoon with legible letters of at least four inches (10 cm) in height stating "NOTICE – NO SWIMMING ALLOWED OUTSIDE OF DESIGNATED SWIMMING ZONES."
- (7) Signage shall be posted indicating swimming zones.
- (8) Depth markings and no diving markers shall be provided on decks in swimming zones as required in Rule .2523 of this Section. Signs shall be posted at all entrances to swimming zones with legible letters of at least four inches (10cm) in height stating "NO DIVING" and stating the maximum depth of the swimming zone in Arabic numerals and shall include the word "feet" or the symbol "ft" to indicate the unit of measure.
- (9) Decks at zero entry areas located within swimming zones are not required to meet the minimum deck area requirements in Rule .2522 of this Section. Access to swimming zones shall be provided for emergency vehicles and personnel. No decks shall be required in non-swimming zones. The requirements of Rule .2515(g)(1) of this Section shall not apply to swimming zones and Rule .2515(g) of this Section shall not apply to non-swimming zones.
- (10) Swimming zones shall meet all safety provisions as set out in Rule .2530 of this Section. Where swimming zones are separated by more than 75 feet, each swimming zone shall separately meet all safety provisions. Non-swimming zones are exempt from the requirements in Rule .2530 of this Section.
- (11) A water treatment system that does not meet the requirements of Rules .2518 and .2519 of this Section shall be approved by the Environmental Health Section of the Department's Division of Public Health when the treatment system performs in a manner equal or superior to the systems described in Rules .2518 and .2519 of this Section in terms of water clarification, disinfection, and removal of debris, and results in a disinfectant residual and pH level as required in Subparagraph (f)(4) of this Rule.
- (12) The requirements of Rule .2529 of this Section and Rule .2526(e)–(h) of this Section shall not apply. Sanitary facility requirements shall comply with the 2018 North Carolina State Building Code: Plumbing Code, which is incorporated by reference, including any subsequent amendments or editions and available free of charge at: <https://codes.iccsafe.org/content/NCPC2018>.
- (13) Bacteriological samples shall be collected by the operator in non-swimming zones and tested weekly. One sample shall be collected for every 250 feet of shoreline, with no more than 300 feet and no less than 25 feet between any two sampling locations. The samples shall be collected at least one foot below the surface, in at least three feet of water. The samples shall be analyzed by a laboratory accredited by the North Carolina Drinking Water Laboratory Certification Program, the North Carolina Wastewater/Groundwater Laboratory Certification Program, or the National Environmental Laboratory Accreditation Program. The test results shall be maintained as part of the records required in Rule .2535(11) of this Section.
- (14) When the result of any test required by Subparagraph (f)(13) of this Rule exceeds the standards in Rule .3402(a) of this Subchapter, the operator shall:
 - (A) notify the local health department that permitted the artificial swimming lagoon and resample the water within 24 hours of receipt of the result from the laboratory; and
 - (B) close all non-swimming zones and post a sign at all non-swimming zone entrances with legible letters of at least four inches (10 cm) in height stating "ATTENTION: ALL NON- SWIMMING ZONES ARE CLOSED. RECREATIONAL ACTIVITIES IN THIS AREA ARE NOT PERMITTED AT THIS TIME." This sign shall remain posted until resampling determines that bacterial levels do not exceed the standards in Rule .3402(a) of this Subchapter.
- (15) Non-swimming zones shall not be required to comply with the lighting requirements of Rule .2524 of this Section. When night swimming is allowed, the operator shall provide lighting in swimming zones as required for public swimming pools.

- (16) The requirements of Rule .2537(b)(16) of this Section shall not apply. Submersible pumps or mechanical pool cleaning equipment shall not be used in swimming zones or within 25 feet of swimming zones when a swimming zone is open to bathers. If submersible pumps or mechanical pool cleaning equipment are used in non-swimming zones when a non-swimming zone is open to users, the following conditions shall apply:

(17)

History Note:

- (A) A registered design professional shall provide design plans or technical specifications that demonstrate that any underwater suction outlets perform in a manner that is equally protective or more protective than the Pool and Hot Tub Alliance's ANSI/APSP/ICC-7 2013 Standard for Suction Entrapment Avoidance in Swimming Pools, which is incorporated by reference, including any subsequent amendments or editions, and available for a fee of one hundred sixty-five dollars (\$165.00) at <https://www.apsp.org/store1>; and
- (B) All floating components of submersible pumps or mechanical pool cleaning equipment shall be labeled with a sign above the water line with legible letters of at least four inches (10 cm) in a contrasting color stating: "DANGER: MECHANICAL EQUIPMENT IN USE. STAY BACK 25 FEET."

The requirements of Rules .2521 and .2516(f)(1) of this Section shall not apply to non-swimming zones.

Authority G.S. 130A-280; 130A-282; S.L. 2011-39; S.L. 2019-88;

Eff. April 1, 1999;

Amended Eff. March 1, 2004;

Pursuant to G.S. 150B-21.3A, rule is necessary without substantive public interest Eff. July 20, 2019;

Temporary Amendment Eff. December 3, 2019; Amended Eff. October 1, 2020.

15A NCAC 18A .2544 SPECIAL PURPOSE AND THERAPY POOLS

(a) Special purpose and therapy pools shall comply with the requirements for public swimming pools and spas except as specified in this Rule.

(b) Float tanks:

- (1) The requirement in Rule .2522 of this Section for a deck or walkway continuous with the top of the pool wall does not apply to isolation float tanks where a clear floor space of at least eight feet by four feet is provided adjacent to the entrance to the tank.
- (2) The requirement in Rule .2532 of this Section for the minimum ceiling height of 7 1/2 feet above the rim of the pool does not preclude use of a canopy of a lower height to enclose an isolation float tank provided the canopy can be opened to allow users a standing entry and exit from the float tank.
- (3) The minimum lighting requirement in Rule .2524 of this Section does not apply to float tanks provided lighting is available for cleaning and is sufficient to provide visibility for entry and exit from the float tank.
- (4) The requirements in Rule .2518 of this Section that recirculation pumps operate 24 hours per day do not preclude turning off the pump during float sessions when a sanitizing cycle is provided that filters and disinfects the entire capacity of the float tank system at least twice before every user

enters the pool. When the float tank is not being used, the pump shall either operate continuously or

intermittently to filter and disinfect the capacity of the pool twice every hour.

- (5) The requirement in Rule .2518 of this Section that pool pumps three horsepower or smaller meet NSF/ANSI Standard 50 is not applicable when the mineral content of the brine in a float tank is incompatible with standard pool pumps. Pumps that do not meet NSF/ANSI standard 50 shall be approved by the Department when the viscosity of the mineral solution in the float tank requires a pump impeller or magnetic coupling designed to pump viscous liquids. Electrical safety of such pumps shall be verified by an independent third-party testing lab to meet applicable Underwriters Laboratories (UL) Standards.
- (6) The requirement in Rule .2532 of this Section for a caution sign at spas with a water temperature above 90 degrees Fahrenheit is not applicable to float tanks that do not exceed an operating temperature of 95 degrees Fahrenheit. Float tanks that exceed an operating temperature of 95 degrees Fahrenheit shall have a posted sign with the same warnings required for hot spas except references to spas may be reworded to reference float tanks or float spas.

- An **online survey** was made available between November 28, 2022, and February 10, 2023. This was referenced in Town newsletters, public meetings, and as an add-on at multiple community and neighborhood events in town. The survey was made available in English, Spanish, Burmese, and Chinese.

Computing the listserve members, social media followers, distribution lists for activities, and participants at in-person events, it is estimated that 75,779 people were notified about the project and given an opportunity to complete the survey. There was no paid advertising for this information dissemination.

- **Public Meeting/information sharing**

- Hargraves Community Center - Thursday, December 15, 2022 - 5:30 - 7:00 pm – 13 participants (mostly individuals)
- Homestead Park Soccer - Friday, January 13, 2023 - 4:30 - 5:30 pm - 8 participants (3 adults, 4 teenagers & 1 child)
- Library Room C - Saturday, January 21, 2023 -11:30 am - 1:00 pm – 15 participant groups (mostly families)
Some parents of disabled children say that they would not offer feedback as no one ever listened when they did give their time to share.
I think this is important to include - if people spend the time giving feedback, it should be used and not just gathered. – Kate Sayer (Splash Pad and Inclusive Playground Project Advisory Committee Member)
- Friday Fun Night Program, Community Center - January 6 – 25 participants (ages 5 -55)
- Sensory Friendly Night, Kidzu Children’s Museum, January 18, 2 participants
- Autism Society of North Carolina’s Orange/Chatham Chapter Hargraves Community Center- January 22 – 60 people in attendance, (ages 2-55)
- Friday Fun Night Program, Community Center – February 2, 33 participants (ages 6-65)

- **Virtual office hours**

- Tuesday, January 24, 2023
Noon - 1:00 pm – 1 Participant
5:00 - 6:00 pm – 1 Participant
- Wednesday, January 25, 2023, 4:00 – 5:00 pm – 2 Participants
- Tuesday, January 31, 2023, Noon – 1:00 pm – 0 Participants

- **Information sharing**

- Chapel Hill Carrboro School Mothers Facebook page - 8900 Parents of school children, 3 times (December 2022 & January 2023)
- Special Needs Advisory Council (SNAC) for Chapel Hill Carrboro Schools – 47 Parents, 1 time (January 2023)
- Special Needs class and parents in person - 6 families, 1 time (January 2023)
- Special Needs Advisory Council Adaptive Curriculum Work Group Facebook page – 47 parents, 1 time (January 2023) -
- Westwood Neighborhood listserv – 346 members, 1 time (January 2023)
- Triangle Blog Blog Newsletter – Several thousand readers, shared 3 times (December 2022 & January 2023)

- Reddit – Unknown Number, shared 1 time (January 2023)
- Splash Pad Petition Campaign via the [change.org](https://www.change.org) – 948 people, shared 1 time (December 2022)
- *Orange County Special Olympics – 500 on listserv “Athletes/Families/Volunteers” ages 0-80 +, 1 time (January 2023)
- Adaptive curriculum pre-k class– 8 people ages 2-11, 1 time (January 2023)
- TOWNnews –7555 subscribers, 3 times (December 2022 & January 2023)
- Parks and Recreation eNews - 2551 subscriber’s, 3 times (December 2022 & January 2023)
- Parks and Recreation RECREATE – 8640 subscribers, 1 time (February 2023)
- Social Media (Town of Chapel Hill)
- Facebook - 13,000 followers, 6 times (December 2022 & January 2023)
- Twitter - 20,000 followers, 3 times (December 2022 & January 2023)
- Social Media (Parks and Recreation Department)
- Facebook - 13,000 followers, 6 times (December 2022 & January 2023)
- Twitter - 751 followers, 2 times (December 2022 & January 2023)
- Signiacades – 3 Town of Chapel Hill locations - Community Center, Hargraves & Homestead Parks (December 2022 & January 2023)
- Door Hangers – 71 Town of Chapel Hill Community Housing units (January & February 2023)
- Email notification to 500 athletes/families/staff/volunteers targeting sports such as, swimming and soccer that have more youth involved. Recipients were all ages and genders.

- **In-person Events**

Let’s Talk Town - Town staff were all over Chapel Hill both in person and virtually throughout January and February 2023 chatting with community members about a variety of programs: People’s Academy, American Rescue Plan Act (ARPA), Board and Commission Applications, Police Department Programs, Park and Playground Improvements, Connected Road Plan, Southern Youth Employment Program.

- ~ Wednesday, January 11, Town Hall 6:30-7:15 pm
- ~ Friday, January 13, Chapel Hill Public Library 9:45 – 11:00 am
- ~ Friday, January 20, Chapel Hill Public Library, 9:45 – 11:00 am
- ~ Wednesday, January 25, Town Hall, 6:30 – 7:15 pm
- ~ Friday, January 27, Chapel Hill Public Library, 9:45 – 11:00 am
- ~ Friday, February 3, Chapel Hill Public Library, 9:45am-11am
- ~ Sunday, February 5, St. Thomas More Church, 12:30-2pm
- ~ Monday, February 6, Virtual office hours, noon-1pm
- ~ Wednesday, February 8, Virtual office hours, 7:30-8:30pm
- ~ Friday, February 10, Chapel Hill Public Library, 9:45am-11am

Town of Chapel Hill Social Media Links and Data – Email and Webpage

- Parks and Recreation eNews Subscribers 2551,
<https://www.townofchapelhill.org/government/newsroom/chapel-hill-enews/-seldept-13>
- Town News Subscribers (formerly Town ENews Weekly Update) 7555
<https://www.townofchapelhill.org/government/newsroom/chapel-hill-enews/-seldept-13>
- Parks and Recreation RECREATE (ParksRec Patrons) Monthly eBrief subscribers 8640, Open Rate 48%, Click thru rate 6.75%

<http://www.icontact-archive.com/cm/YJRqaxWvl8cHjFGv6x5KiCsJdhMvZ5XzYGUaeCJ6wqJJRWZiGWcpbA==?w=3>

- Web Page Visits Dec. 1, 2022 – Jan 31, 2023
/government/departments-services/parks-and-recreation/planning-and-development/inclusive-playground-project

Pageviews (Pageviews is the total number of pages viewed. Repeated views of a single page are counted.) : 464
- Unique Pageviews (Unique Pageviews is the number of sessions during which the specified page was viewed at least once.) : 435
Avg. Time on Page : 00:01:27
- Entrances (Entrances is the number of times visitors entered your site through a specified page)
338
- Bounce Rate % (The percentage of single-page sessions in which there was no interaction with the page. A bounced session has a duration of 0 seconds.)
73.96%
- Exit Page (%Exit is (number of exits) / (number of pageviews) for the page or set of pages. It indicates how often users exit from that page or set of pages when they view the page(s).
67.03%

TOWN OF CHAPEL HILL PARKS & RECREATION DEPARTMENT SPLASH PAD & INCLUSIVE PLAYGROUND SURVEY

INTRODUCTION

The Town of Chapel Hill Parks and Recreation Department is working with Thomas & Hutton, a landscape architecture and engineering firm and 80 West, an aquatics specialist, to assess the feasibility of the Town providing a new inclusive playground and a splash pad facility. This survey is designed to gather opinions and feedback from the community to help guide future planning efforts.

Images are also included to provide examples of some of the amenities referenced in this survey.

These projects are not currently funded. This information will be used to guide future planning efforts related to these amenities. For more information, visit the project webpage at :

<https://www.townofchapelhill.org/government/departments-services/parks-and-recreation/planning-and-development/inclusive-playground-project>

What is an inclusive playground? An inclusive playground allows children of all abilities to play with their peers regardless of physical or social or cognitive needs.

What is a splash pad? Splash pads come in many different sizes and shapes; they come with different water features and have various amenities. Typically splash pads avoid any water ponding. Water is sprayed through a nozzle. There's generally not so much "splashing" as there is "spraying".

Section 1

1

Would you support the development of a new inclusive playground?

Examples of some inclusive play elements (swings, merry go round, and sensory play) images are shown below. Single choice.



Swing



Merry Go-Round



Sensory Play Equipment

Inclusive Play Elements

Yes
No
Unsure

2

Please indicate your level of agreement with one of the following statements. (choose one)

Single choice.

I support the development of a new inclusive playground

I feel that additional resources should be dedicated to improving existing playgrounds to include inclusive elements (see images).

I agree with both statements.

I disagree with both statements

3

What other amenities would you like to see included at a new inclusive playground? (please choose all that apply)

Examples of some amenities are shown below. Required to answer. Multiple choice.



Tables & Chairs



Benches



Shade Structures



Sculptures



Shade Structures



Murals



Decorative Pavement



Sculptures

Furniture (chairs, benches, and tables) – Images included

Shade structures or small open-air pavilion – Images included

New Restrooms with changing areas

Renovations to the existing restrooms and changing areas

Outdoor shower

Public Art (Mural, Sculpture, Decorative Painting, etc.) – Images included

Concessions

Lighting

4

Which location(s) would you prefer for a new inclusive playground to be located?

Required to answer. Single choice.

Community Center Park

Hargraves Park

Homestead Park

5

Do you travel outside of Chapel Hill / Carrboro to use an inclusive playground? Required to answer. Single choice.

Yes

No

6

If you answered 'YES' to question #5, please share the location of the inclusive playground you travel to that is outside of the Town of Chapel Hill / Carrboro. Required to answer. Multi Line Text.

Enter your answer

7

Please indicate your level of agreement with one of the following statements. (choose one)

Required to answer. Single choice.

I prefer one large splashpad location

I prefer smaller spray features at more than one park location

Unsure

8

Are you willing to pay a fee to utilize a splash pad within the Town of Chapel Hill?

Required to answer. Single choice.

Yes

No

Unsure

9

In viewing the splash pad designs below, which do you prefer? (choose one)Single choice.



Splash Pad Designs

Theme
Nature Based
Traditional
Contemporary

10

Which location(s) would you prefer for a large splash pad to be located? Required to answer. Multiple choice.

Hargraves Park
Homestead Park
Community Center Park

11

What other amenities would you like to see included at a new splash pad?

Examples of some amenities are shown below. (please choose all that apply) Required to answer. Multiple choice.



Furniture (chairs, benches, and tables) – Images included
Shade structures or small open-air pavilion – Images included
New Restrooms with changing areas
Renovations to the existing restrooms and changing areas
Outdoor shower
Public Art (Mural, Sculpture, Decorative Painting, etc.) – Images included
Concessions

Lighting

12

Do you travel outside of the Town of Chapel Hill / Carrboro to use a splash pad?

Required to answer. Single choice.

Yes

No

13

If you answered 'YES' to question #12, please share the location of the splash pad you travel to that is outside of the Town of Chapel Hill / Carrboro. Required to answer. Single line text.

Enter your answer

14

Do you live in Orange County, NC? Required to answer. Single choice.

Yes

No

15

Do you have children, grandchildren or other youth 12 years of age or under that you bring to parks within the Town of Chapel Hill? Required to answer. Single choice.

Yes

No

16

How do you travel to the parks? (please choose all that apply) Required to answer.

Multiple choice.

By car (yours or rideshare)

By bus

I walk or bicycle

17

Please share additional comments. Multi Line Text.

Enter your answer