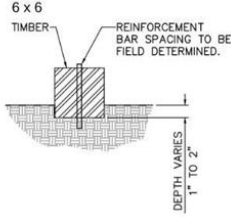
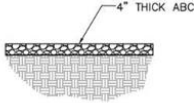


500 North Street - Redesigned Parking





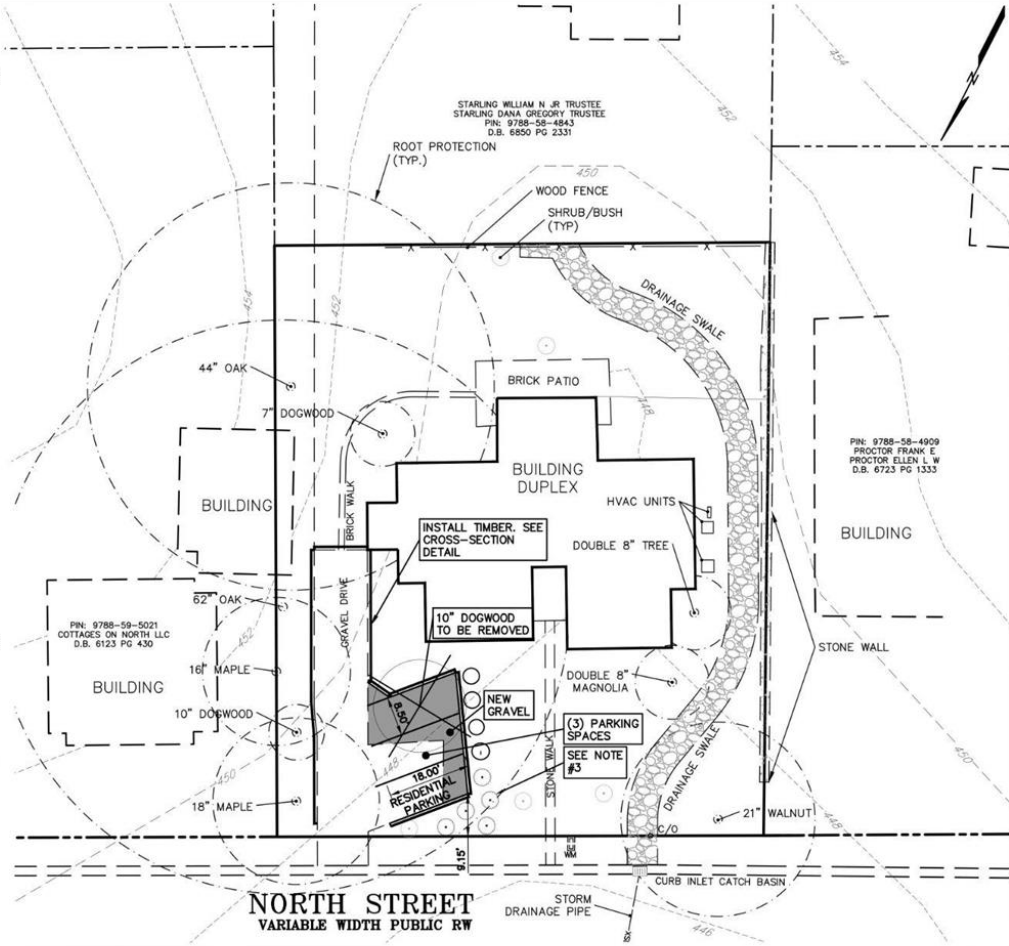
TIMBER TYPICAL CROSS-SECTION



TYPICAL GRAVEL CROSS-SECTION

NOTES:

1. EXISTING TOPOGRAPHY, BUILDINGS AND STREET LOCATION TAKEN FROM GIS MAPPING AND SITE PLAN PROVIDED BY OWNER.
2. 8x8 TIMBERS IN PLACE WITH REBAR TIES TO BE FIELD ADJUSTED BY OWNER AT THEIR DISCRETION.
3. 5 EACH EVERGREEN SHADE-TOLERANT SHRUB, 18" INITIAL HEIGHT, OF ONE OF THE FOLLOWING SPECIES APPROVED BY ENGINEER, PLANTED 4'-5" ON CENTER:
 - ILEX GLABRA 'SHAMROCK' (SHAMROCK HOLLY)
 - PIERIS JAPONICA KATSURA (KATSURA PIERIS)



NORTH STREET
VARIABLE WIDTH PUBLIC RW

REV.	DATE	DESCRIPTION	BY

civil consultants
LAND PLANNING & CIVIL ENGINEERS
WWW.CIVILCONSULTANTS.COM

3705 LYCKAN PARKWAY - SUITE 201 - DURHAM, NC 27707
919-450-1648 PHONE
Lic. #C-1030

DATE:	SEPT-1, 2024
HORIZ. SCALE:	1" = 20'
VERT. SCALE:	N/A
PROJ. MANAGER:	JHB
DRAWN BY:	JHB
PROJECT NO.:	27009
DRAWING NAME:	27009.DWG
SHEET NO.:	EX-1

Z:\SHARED FOLDERS\PROJECTS\CORONAL27009.DWG(27009).DWG

Shamrock Holly



Severe Weather 6-in x 6-in #2 Southern Yellow Pine
Ground Contact Pressure Treated Lumber



ABC Gravel

