

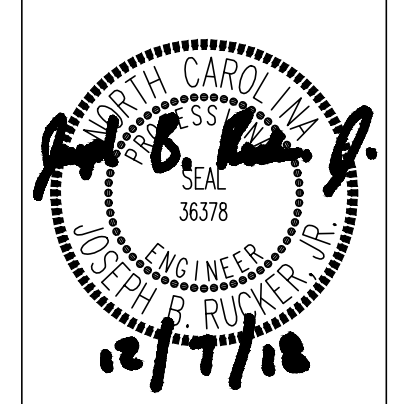


- NOTES**
1. VERIFY AND COORDINATE ALL LIGHT FIXTURE LOCATIONS WITH SITE, ARCHITECTURAL, HARDSCAPE / LANDSCAPING, ETC. PRIOR TO BEGINNING WORK.
 2. COORDINATE ALL CONDUIT ROUTINGS, POLE BASES AND OTHER UNDERGROUND INSTALLATIONS WITH UNDERGROUND UTILITIES AND OTHER UNDERGROUND COMPONENTS PRIOR TO BEGINNING WORK.
 3. CONTRACTOR SHALL ENSURE THAT THE POLES MEET ALL NORTH CAROLINA & LOCAL AHJ CODES WITH REGARD TO EPA RATINGS, BURIAL DEPTHS, POLE REQUIREMENTS, ETC. PRIOR TO BEGINNING WORK.
 4. ALL EXTERIOR SITE LIGHTING SHALL BE DESIGNED TO PREVENT OFF-SITE GLARE.

PHOTOMETRIC SITE LEGEND

- POLE FIXTURE - SEE FIXTURE SCHEDULE
- ⊗ POLE OR ROLLARD FIXTURE - SEE FIXTURE SCHEDULE. IF PRESENT, ARROW INDICATES AIMING DIRECTION.
- ⊙ BLDG FIXTURE - SEE FIXTURE SCHEDULE

CRENSHAW CONSULTING
Lighting & Electrical
 1000 W. STATE ST. SUITE 200
 RALEIGH, NORTH CAROLINA 27609
 919-971-9970 FAX 919-971-9900
 NO LICENSE # C-1180



STATE EMPLOYEES' CREDIT UNION
 CHARTERWOOD BRANCH (CHARTERWOOD PH 2)
 CHAPEL HILL, ORANGE COUNTY, NC

REVISIONS:

NO.	DATE	DESCRIPTION
1	12/07/18	REVIEW COMMENTS

DATE:
AUGUST 3, 2018

CONTENTS
SITE PLAN -
PHOTOMETRICS

SHEET

SL1002

1 SITE PLAN - PHOTOMETRICS
 SCALE: 1" = 30'

THESE DRAWINGS WILL BE AT THE SCALE INDICATED WHEN PLOTTED AT 24" X 36"