

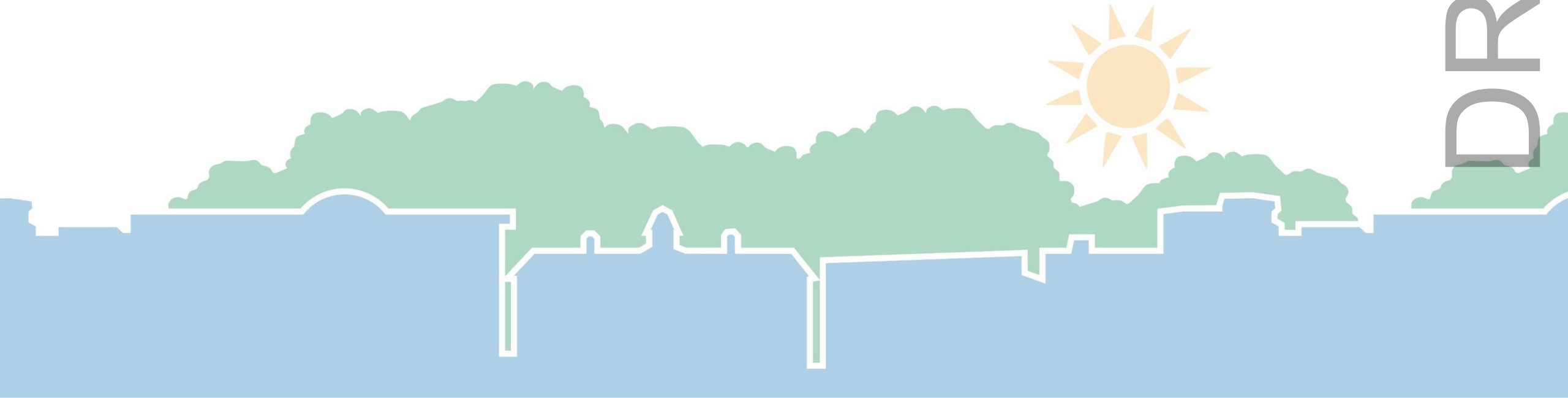
# Town Council

Petition to Remove Glenn Heights from the  
South Martin Luther King Jr. Focus Area

**November 20, 2019**



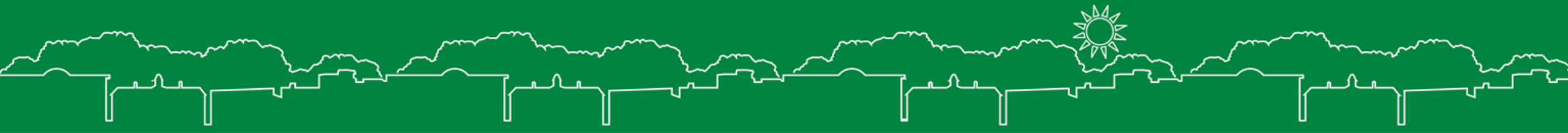
DRAFT



# Recommendation:

That the Council authorize the Town Manager to retain Glenn Heights in the South Martin Luther King Jr. Blvd. Focus Area and to apply the Traditional Neighborhood Character Type to the community. (Resolution A)

DRAFT



# Options:

- ❖ Resolution A - Assign the Traditional Neighborhood Residential Character Type to the Glenn Heights Neighborhood
- ❖ Resolution B - Remove Glenn Heights from the S. MLK Jr. Blvd. Focus Area
- ❖ Resolution C - Assign the Small Lot Single Family Character Type to the Glenn Heights Neighborhood
- ❖ Resolution D – Rename the Townhouse etc. Character Type & revise to include low density single family homes

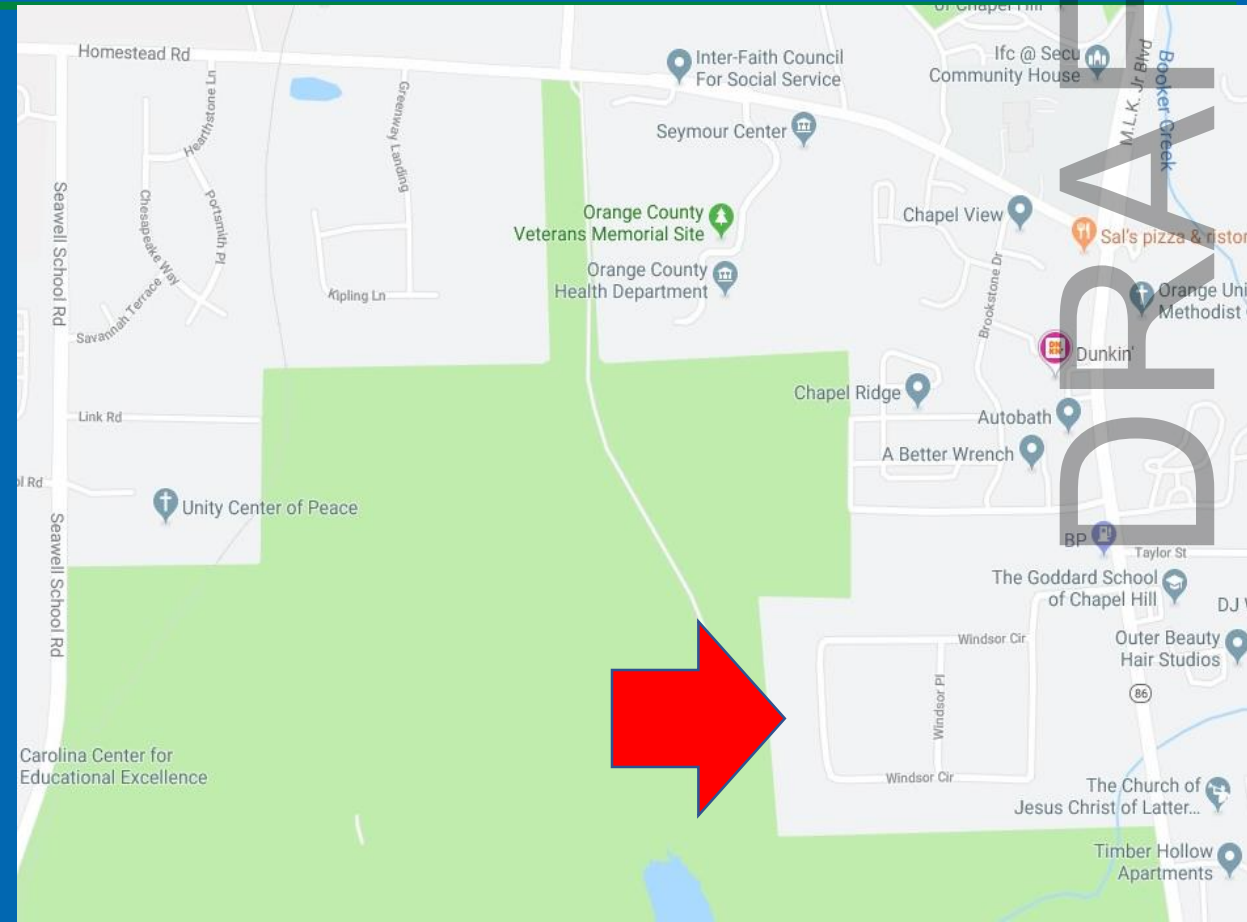
DRAFT





# Glenn Heights

Residents of the Glenn Heights neighborhood have petitioned to be removed from the South Martin Luther King, Jr. Blvd. Focus Area





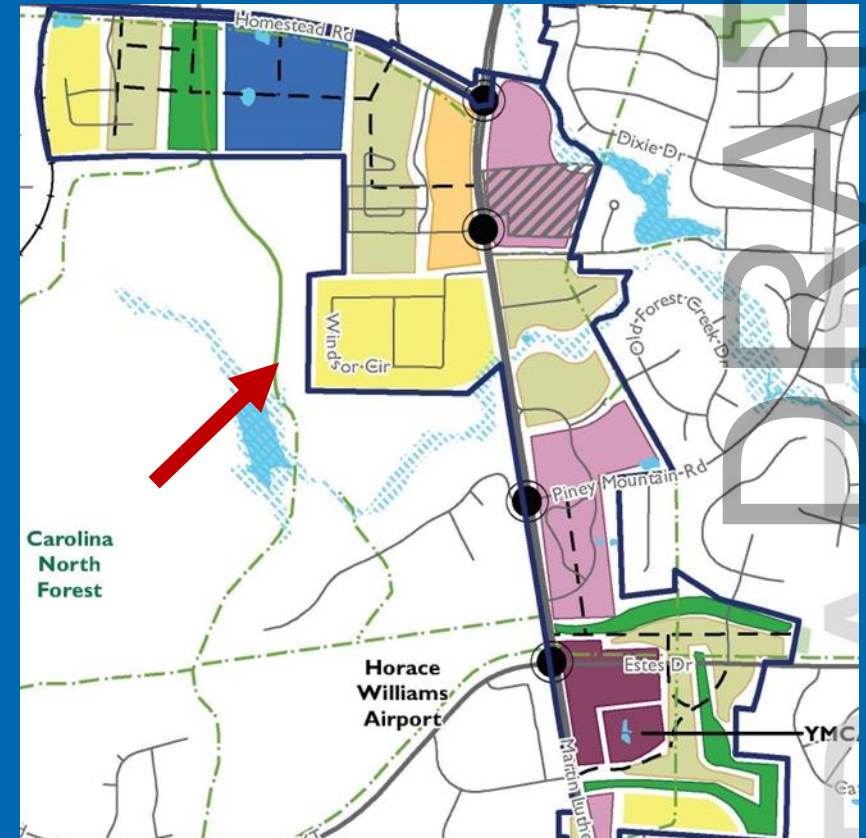
# Glenn Heights

## Chapel Hill 2020

- Glenn Heights is included in the S. MLK Focus Area
- S. MLK Focus Area overlays Low Residential 1-4 units/acre designation

## Draft Focus Area Map

- Townhouse etc. Character Type



# Residential Character Types

- Medium-intensity residential that diversifies housing options by filling a gap between large lot single-family homes & multi-unit residential buildings. These Character Types allow for sensitive infill and are appropriate adjacent to transit.
  - Small Lot Single Family
  - Traditional Neighborhood Residential

DRAFT





# Residential Character Types

Small Lot Single Family – Includes:

- single-family detached homes on small individual lots
- units clustered together in a cottage court



DRAFT



# Residential Character Types

Traditional Neighborhood Residential – Includes:

- Single-family detached homes
- Duplexes, Triplexes, Quadplexes
- Units clustered together in a cottage court





# Recommendation:

That the Council authorize the Town Manager to retain Glenn Heights in the South Martin Luther King Jr. Blvd. Focus Area and to apply the Traditional Neighborhood Character Type to the community. (Resolution A)

DRAFT

