



Mobility Plan 2020 Complete Streets Update:

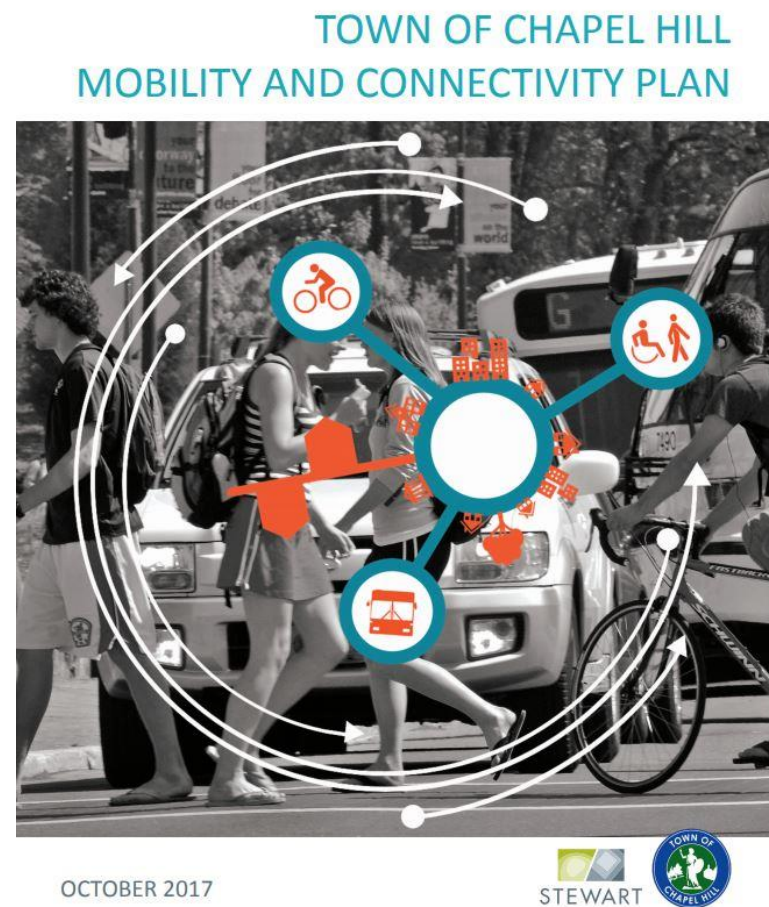
What's New?

Planning Commission

October 6, 2020

Mobility and Connectivity Plan

- Adopted on October 25, 2017
- Long-term plan
- Helps guide and leverage bike-ped facilities
- Increase alternative commute modshare



NCDOT Complete Streets Policy Update

“Ensure pedestrian, bicycle, transit, and evolving transportation technology options”

In Plan	• NCDOT pays full cost
Not in Plan, but Need Identified	• Cost Share*
Betterment	• Local pays full cost

*Exception – NCDOT pays full cost for on-road bicycle facility

Complete Streets

- Interdisciplinary approach
- design and support
- Safety, access, mobility
- All modes



Proposed Enhancement Examples

<u>NCDOT Streets</u>	<u>From</u>	<u>To</u>	<u>Proposed Facilities from 2017 Mobility Plan</u>	<u>Proposed Enhancements</u>
Culbreth Road	Rossburn Way/Covenant Place	US 15-501 South	Bicycle Lanes	Protected Bicycle Lanes
Ephesus Church Road	US 15-501	Pope Rd.	Bicycle Lanes	Protected Bicycle Lanes
Erwin Road	US 15-501	Dobbins Dr.	None	Bicycle Lanes, Sidewalks (both sides)
	Covington Dr.	I-40	Bicycle Lanes, Sidewalks (west side)	12' Multi-use Path (both sides)
Eubanks Road	Chapel Hill Transit Park- and-Ride Entrance	Millhouse Rd	Bicycle Lanes	Bicycle Lanes, Sidewalks (both sides)
	Millhouse Rd.	Chapel Hill Border	Bicycle Lanes	12' Multi-use Path (north side)

Story Map

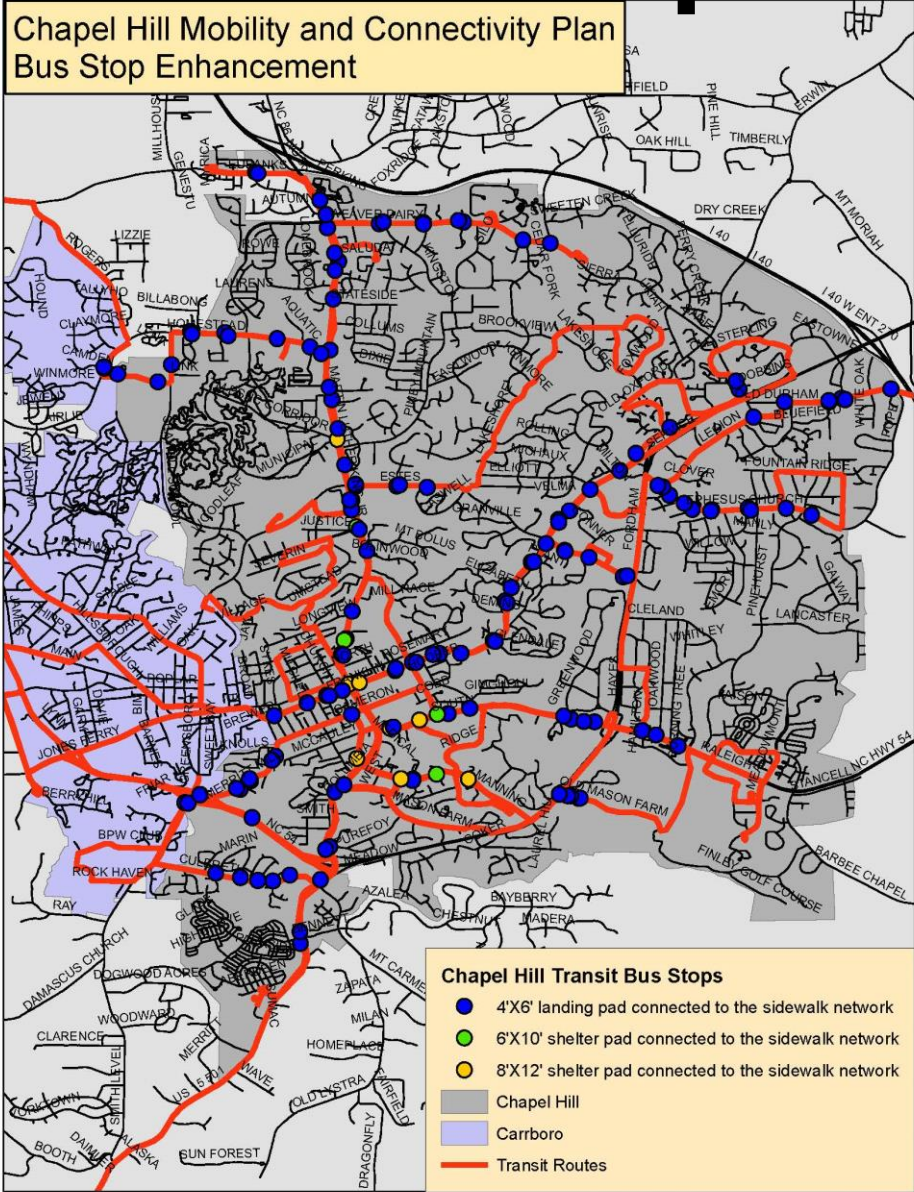


Mobility Plan 2020 Complete Streets Update: What's New?

Outlining the proposed 2020 Complete Streets Update to the Town of Chapel Hill's Mobility and Connectivity Plan

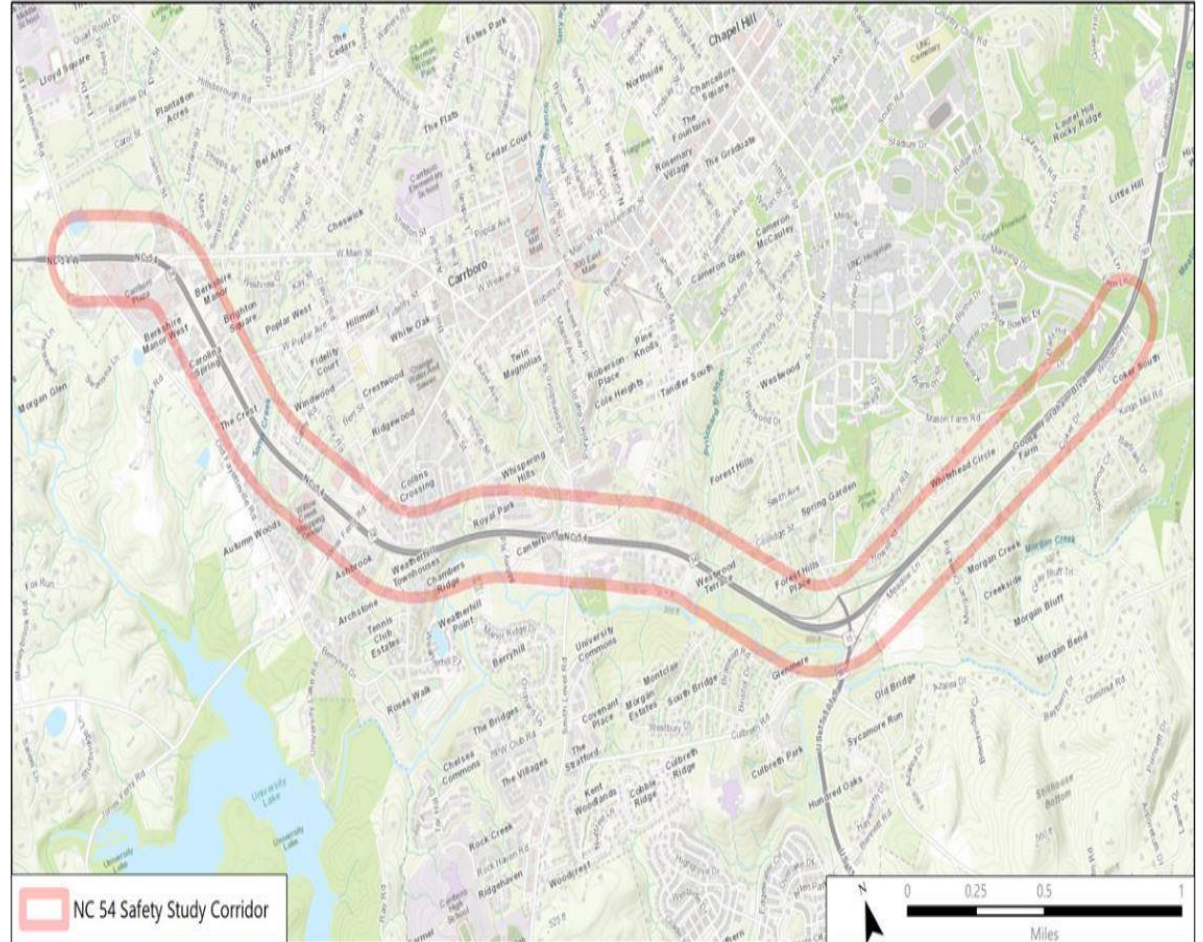
Chapel Hill Planning Department | September 22, 2020

Chapel Hill Transit Stop Enhancements

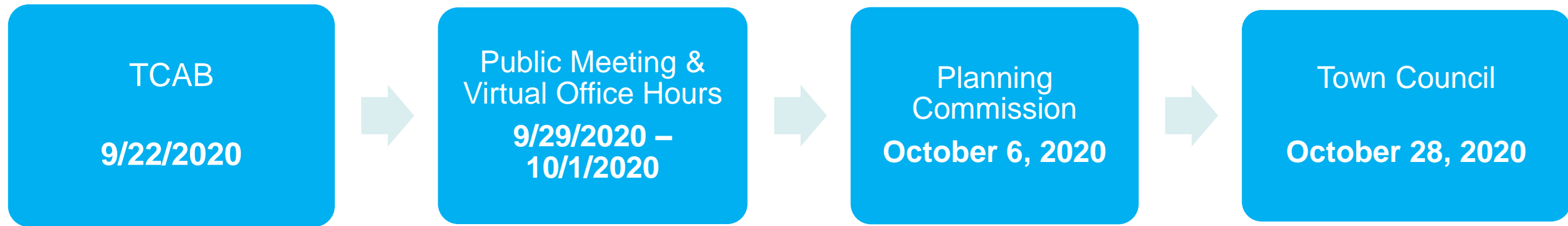


NC 54 Bicycle and Pedestrian Safety Plan

- Corridor study that analyzed motorized & non-motorized usage along NC 54
- Develop framework & vision
- Use systems-based approach



Process



Questions?



TOWN OF CHAPEL HILL MOBILITY AND CONNECTIVITY PLAN



OCTOBER 2017

