



Call a Public Hearing: Annexation of Sunrise Rd Site

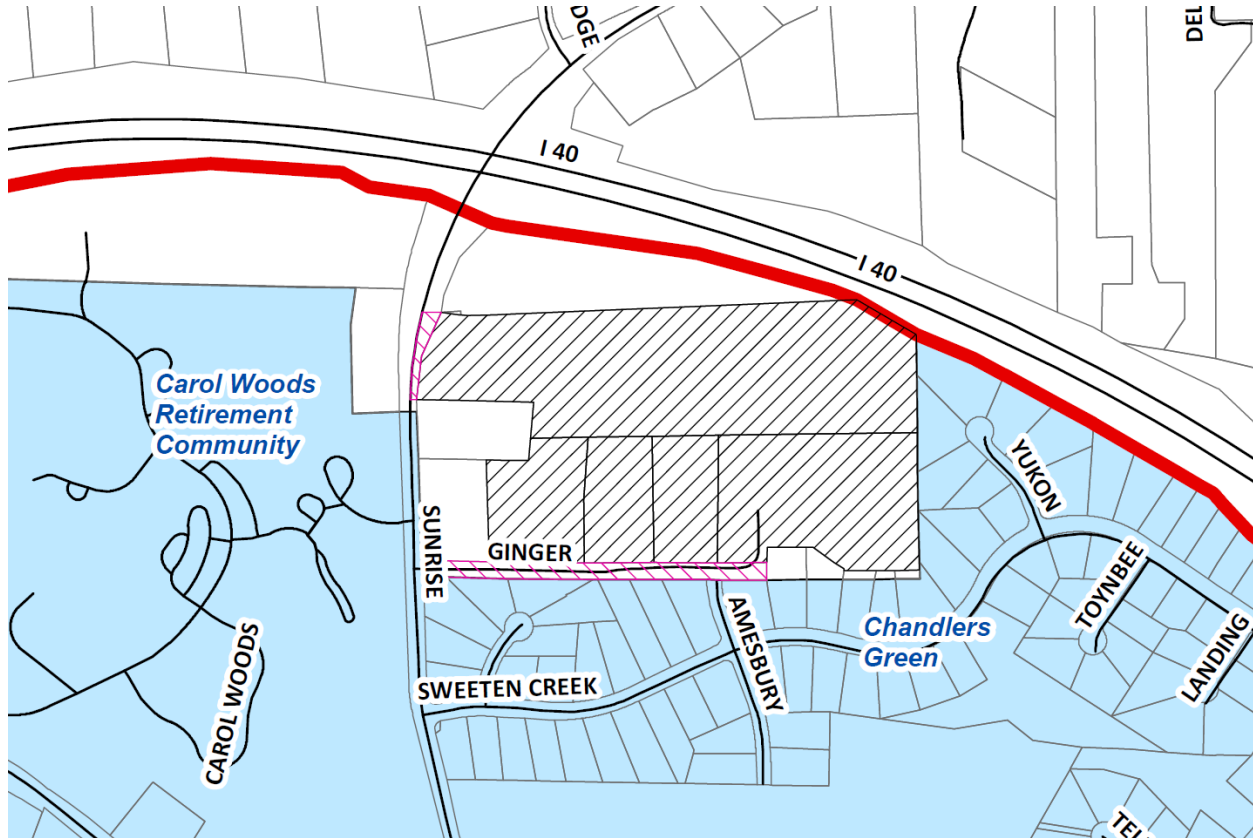


October 30, 2019 | Council Regular Meeting

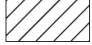



Where is this in the annexation process?



Location



Legend

-  Parcels to be Annexed
-  Right-of-way to be Annexed
-  Chapel Hill Planning Jurisdiction (includes ETJ and Transition Area)
-  Chapel Hill Corporate Limits

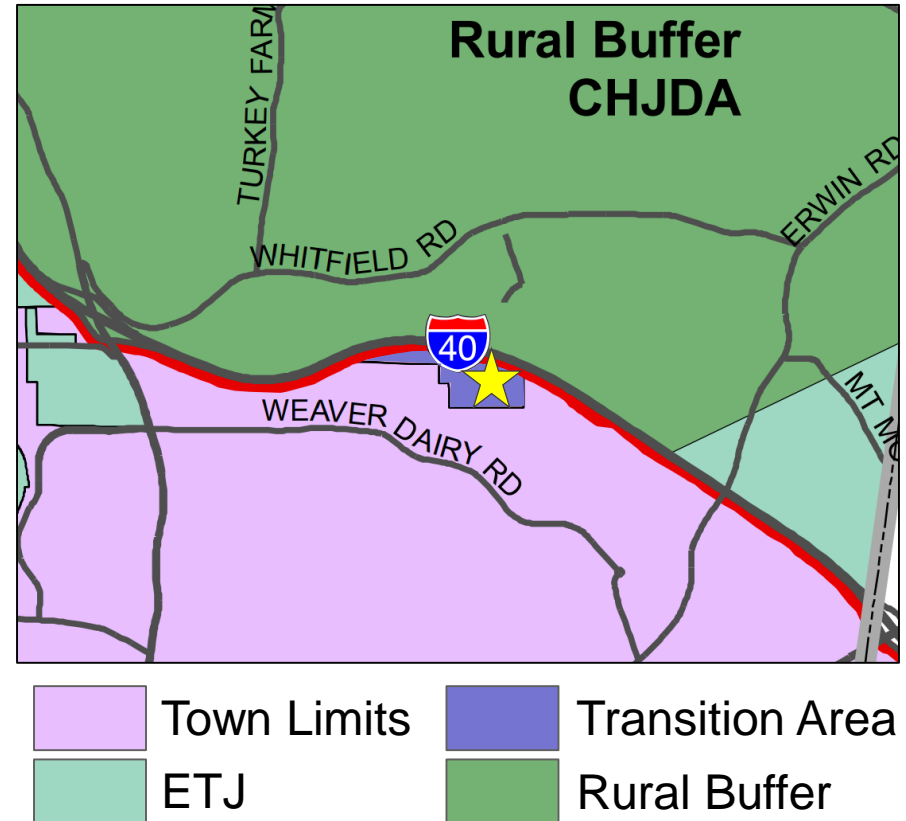
Anticipated Development

- June 27, 2019: Conditional Zoning application submitted by Habitat for Humanity for Weaver's Grove

Proposed Uses	
Total Dwelling Units	219 (Duplex, Townhome, and Multifamily)
Affordable Units	94 out of Total
Other Uses	Café, Community Center

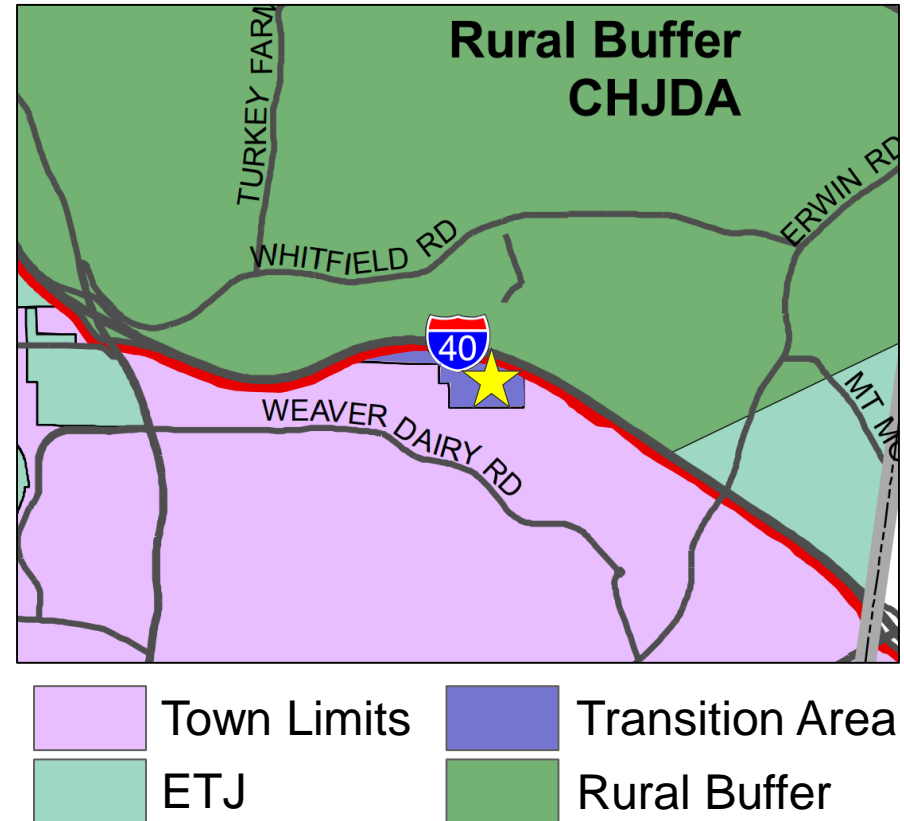
Interests in Annexation

- Site falls in JPA Transition Area
- Outside of Chapel Hill ETJ (Extra-Territorial Jurisdiction)
- Joint review with Orange County



Interests in Annexation

- Affordable Housing funds approved for project must be spent within Town limits or ETJ
- Opportunity for one reviewing jurisdiction



Recommendation

- Call a Public Hearing on November 20, 2019 to consider the petition for annexation (*R-9*)