



UNC FINLEY GOLF COURSE - TRAINING FACILITY  
SPECIAL USE PERMIT  
29 JANUARY 2025







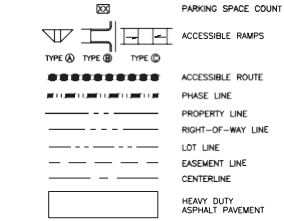
**PRACTICE COURSE AERIAL**

**UNC FINLEY GOLF COURSE - TRAINING FACILITY  
SPECIAL USE PERMIT**

29 JANUARY 2025







<b>SITE DATA:</b>		
BUILDING AREA	=	13,060 SF
PROPOSED IMPERVIOUS SURFACE	=	0.94 AC



GRAPHIC SCALE

1 inch = 40 ft.

29 JANUARY 2025







TEAM BUILDING SITE PLAN

**UNC FINLEY GOLF COURSE - TRAINING FACILITY  
SPECIAL USE PERMIT**

29 JANUARY 2025



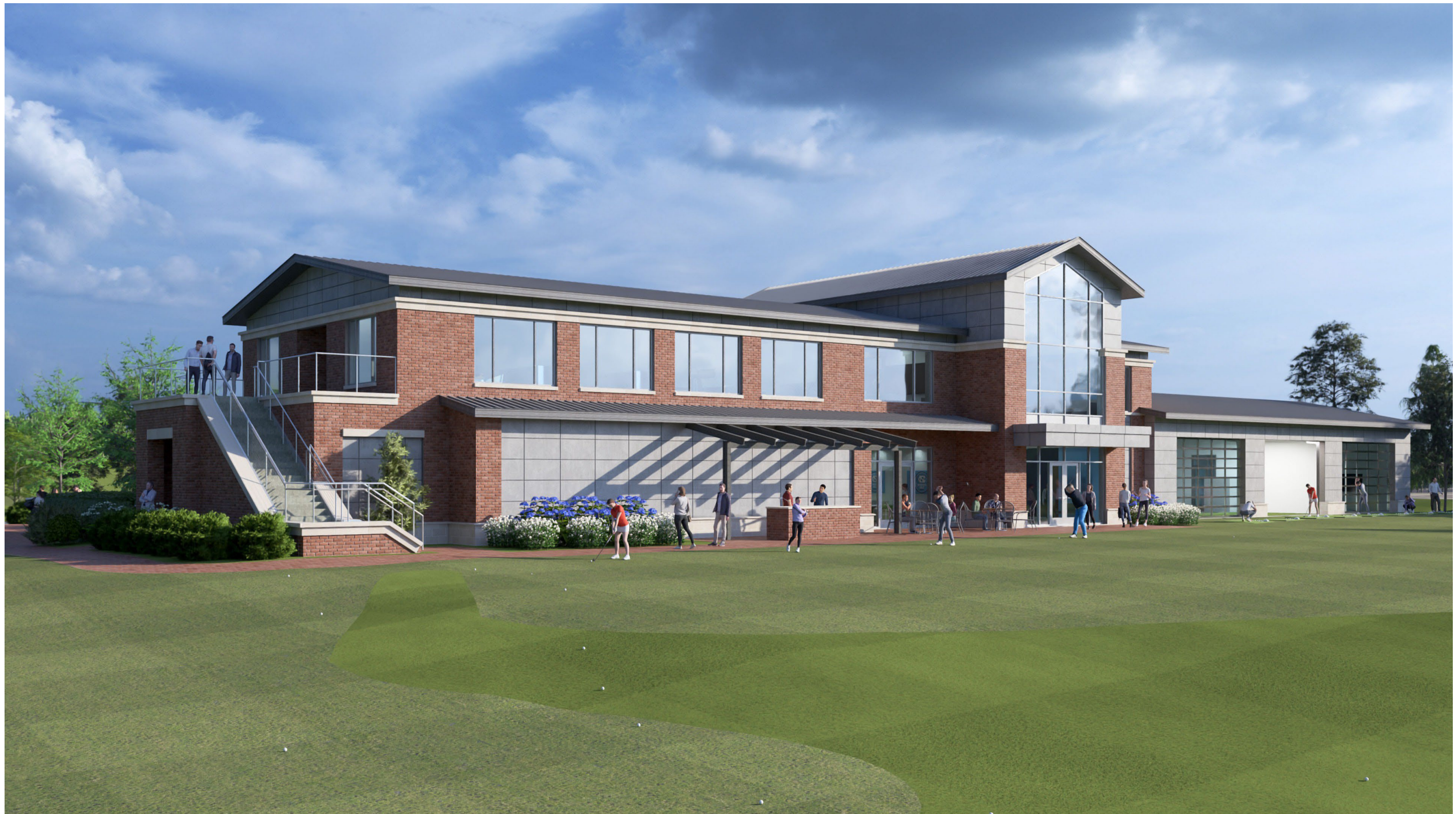


**UNC FINLEY GOLF COURSE - TRAINING FACILITY  
SPECIAL USE PERMIT**

29 JANUARY 2025







**UNC FINLEY GOLF COURSE - TRAINING FACILITY  
SPECIAL USE PERMIT**

29 JANUARY 2025







**UNC FINLEY GOLF COURSE - TRAINING FACILITY**  
**SPECIAL USE PERMIT**

29 JANUARY 2025

