

McADAMS

The John R. McAdams Company, Inc.
2905 Meridian Parkway
Durham, NC 27713

phone 919. 361. 5000
fax 919. 361. 2269
license number: C-0293, C-187

www.mcadamsco.com

CLIENT

TRINISC RESIDENTIAL GROUP
110 CORCORAN STREET, 5TH FLOOR
DURHAM, NORTH CAROLINA, 27701
PHONE: 919. 884. 7395

AURA
CONDITIONAL ZONING PERMIT
NORTH ESTES DRIVE
CHAPEL HILL, NORTH CAROLINA, 27516



GRADING LEGEND

	FLARED END SECTION
	END WALL SECTION
	CATCH BASIN
	DROP INLET
	STORM SERVICE INLET
	STORM SERVICE ROOF-RAIN
	JUNCTION BOX
	DRAINAGE FLOW ARROW
	LINE BREAK SYMBOL
	TOP & BOTTOM CURB ELEVATIONS
	TOP OF WALL ELEVATION
	BOTTOM OF WALL ELEVATION (NOTE: BOTTOM OF WALL IS GROUND ELEVATION NOT WALL FOUNDATION)
	SPOT ELEVATION
	STORM DRAINAGE
	STORM SERVICE LINE
	ROOF DRAIN, 8" ADS NON-PERFORATED TUBING OR EQUAL 1.0% MIN. SLOPE 3' MIN. COVER PVC SCHEDULE 40 IN TRAFFIC AREAS
	TREE PROTECTION FENCE
	LIMITS OF DISTURBANCE
	WOODED AREA
	MAJOR CONTOUR
	MINOR CONTOUR
	EXISTING MAJOR CONTOUR
	EXISTING MINOR CONTOUR
	EASEMENT LINE
	ACCESSIBLE PARKING AREA (2% MAX. SLOPE IN ALL DIRECTIONS)

DUKE ENERGY TRANSMISSION RIGHT OF WAY
68' WIDTH REFERENCED IN PARCEL DEED DESCRIPTION
SHOWN PENDING CLARIFICATION FROM DUKE ENERGY
ASSET PROTECTION
D.B. 524, PG. 1129
LAND UNIT 0011789

N/F
RUMMEL, WHITCOMB
PIN: 9789-45-5646
D.B. 1331, PG. 63

JORDAN LAKE
RIPARIAN BUFFER

STORMWATER CONTROL
MEASURE "A"
(SEE "C9" SHEETS)

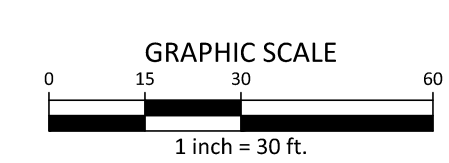
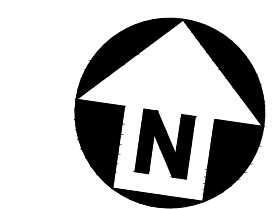
WETLANDS

GENERAL NOTES:

- THE LANDSCAPE AREAS FRONTING ESTES ROAD AND MLK BLVD WILL BE GRADED TOWARDS THE SITE TO CAPTURE STORMWATER RUNOFF WHERE POSSIBLE AND AS NECESSARY TO MEET STORMWATER TREATMENT REQUIREMENTS.

SEE SHEET C0.01 FOR ALL PROJECT, SITE, GRADING, STORM DRAINAGE AND UTILITY NOTES

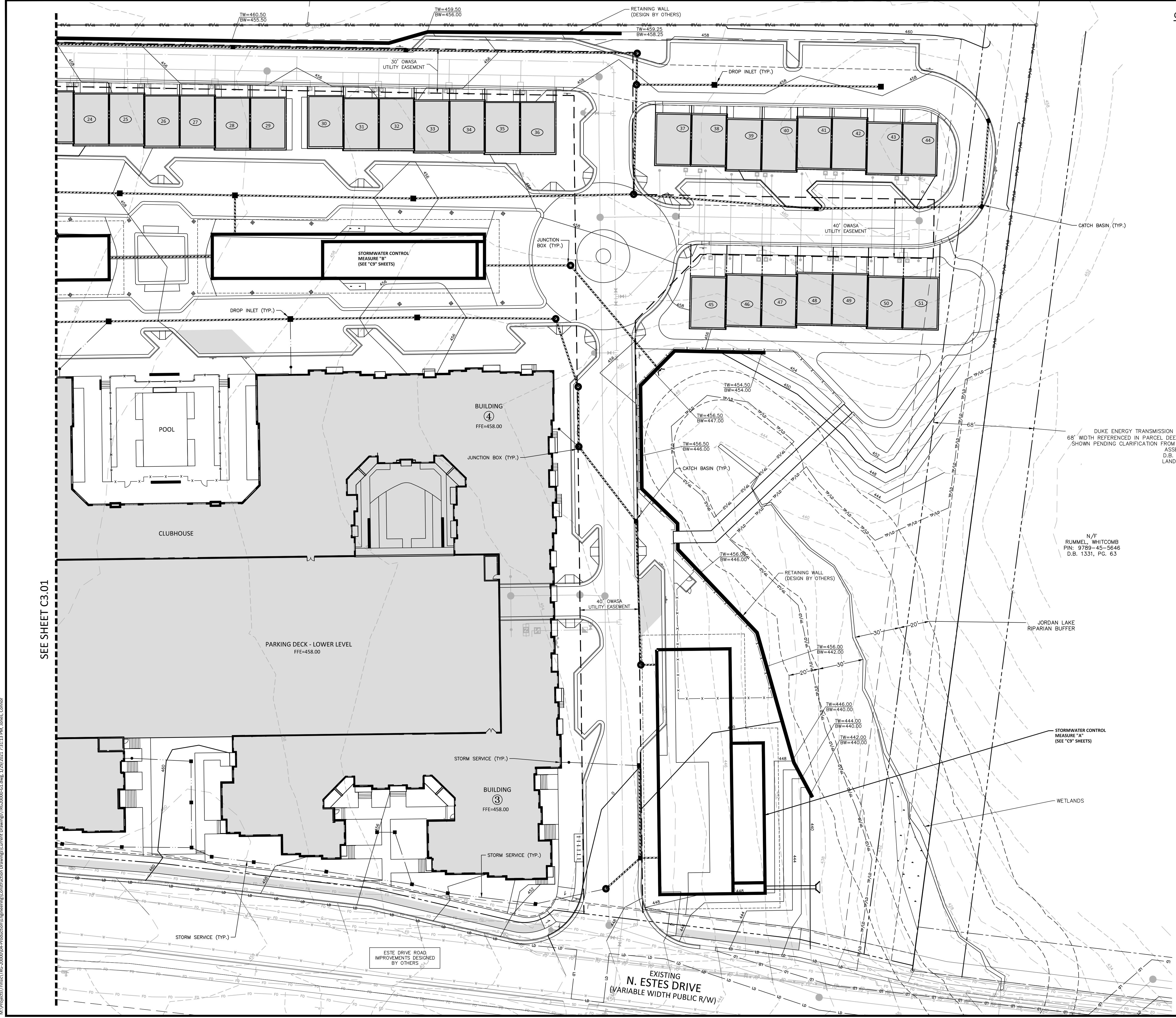
ALL CONSTRUCTION SHALL BE IN ACCORDANCE WITH THE CURRENT TOWN OF CHAPEL HILL ENGINEERING DESIGN AND CONSTRUCTION STANDARDS



PRELIMINARY DRAWING - NOT RELEASED FOR CONSTRUCTION

SEE SHEET C3.01

M:\Projects\Trinisc\TRG-20000\04-Production\Engineering\Construction Drawings\TRG20000-G1.dwg, 1/29/2021 7:31:13 PM, Jones, Connor



REVISIONS

NO.	DATE	REVISION DESCRIPTION
1	11.13.2020	REVISED PER 1ST CZP COMMENTS
2	12.18.2020	REVISED PER 2ND CZP COMMENTS
3	01.29.2021	REVISED PER 3RD CZP COMMENTS

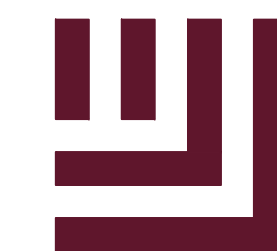
PLAN INFORMATION

PROJECT NO. TRG-20000
 FILENAME TRG20000-G1
 CHECKED BY ZNB
 DRAWN BY CJJ
 SCALE 1"=30'
 DATE 09.24.2020

SHEET

GRADING PLAN - AREA B

C3.02



McADAMS

The John R. McAdams Company, Inc.
2905 Meridian Parkway
Durham, NC 27713

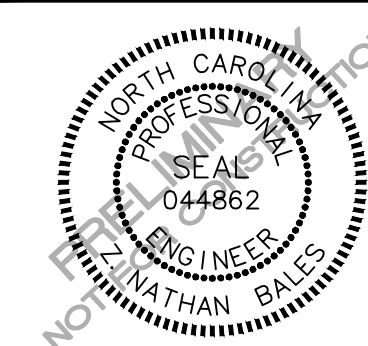
phone 919. 361. 5000
fax 919. 361. 2269
license number: C-0293, C-187

www.mcadamsco.com

CLIENT

TRINISC RESIDENTIAL GROUP
110 CORCORAN STREET, 5TH FLOOR
DURHAM, NORTH CAROLINA, 27701
PHONE: 919. 884. 7395

AURA
CONDITIONAL ZONING PERMIT
NORTH ESTES DRIVE
CHAPEL HILL, NORTH CAROLINA, 27516



REVISIONS

NO.	DATE	REVISION DESCRIPTION
1	11.13.2020	REVISED PER 1ST CZP COMMENTS
2	12.18.2020	REVISED PER 2ND CZP COMMENTS
3	01.29.2021	REVISED PER 3RD CZP COMMENTS

PLAN INFORMATION

PROJECT NO. TRG-20000
 FILENAME TRG20000-OAU1
 CHECKED BY ZNB
 DRAWN BY CJJ
 SCALE 1"=50'
 DATE 09.24.2020

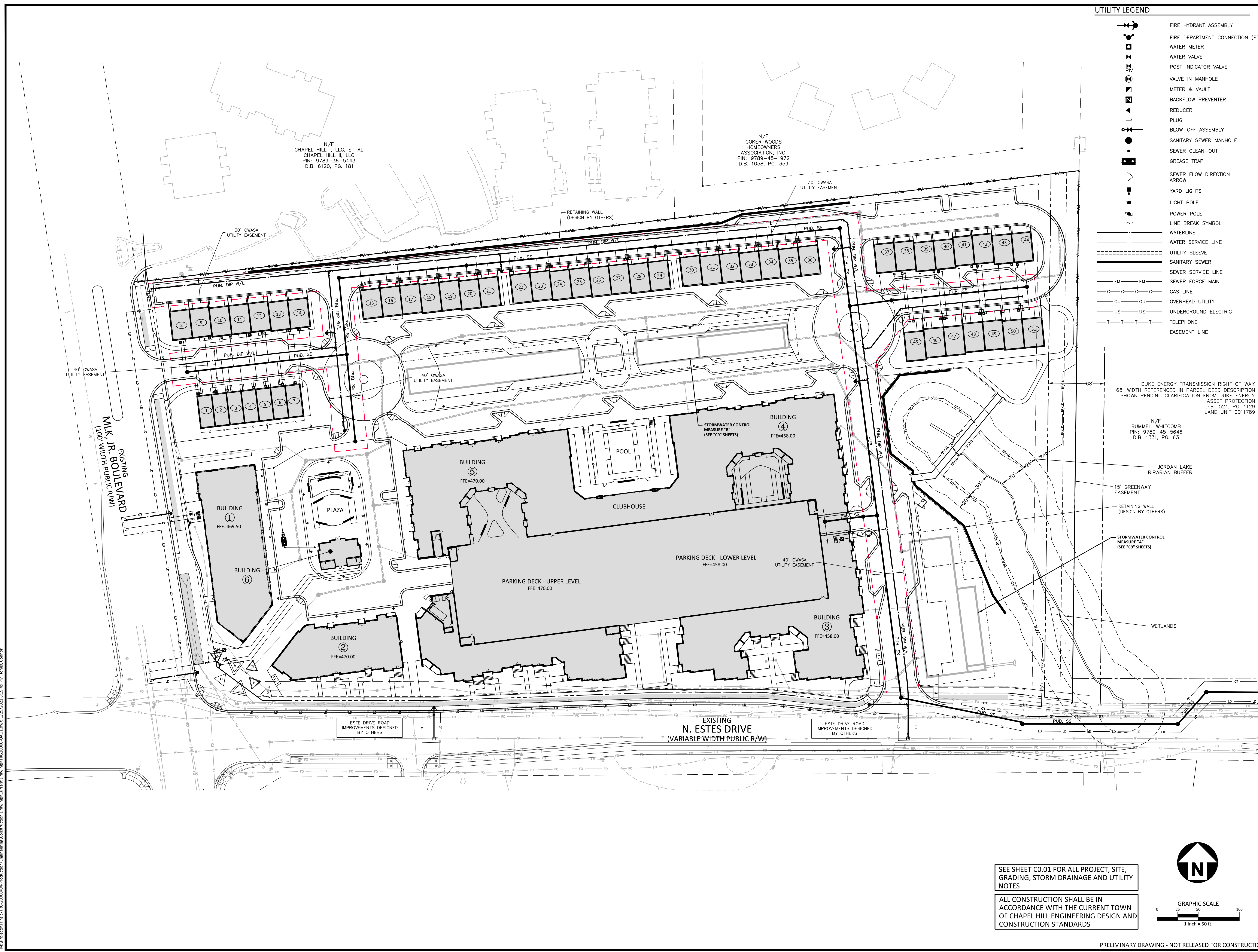
SHEET

OVERALL UTILITY PLAN

C4.00

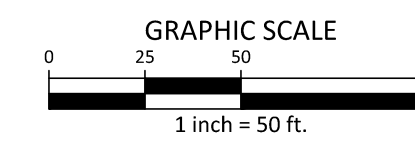
UTILITY LEGEND

- FIRE HYDRANT ASSEMBLY
- FIRE DEPARTMENT CONNECTION (FDC)
- WATER METER
- WATER VALVE
- POST INDICATOR VALVE
- VALVE IN MANHOLE
- METER & VAULT
- BACKFLOW PREVENTER
- REDUCER
- PLUG
- BLOW-OFF ASSEMBLY
- SANITARY SEWER MANHOLE
- SEWER CLEAN-OUT
- GREASE TRAP
- SEWER FLOW DIRECTION ARROW
- YARD LIGHTS
- LIGHT POLE
- POWER POLE
- LINE BREAK SYMBOL
- WATERLINE
- WATER SERVICE LINE
- UTILITY SLEEVE
- SANITARY SEWER
- SEWER SERVICE LINE
- SEWER FORCE MAIN
- GAS LINE
- OVERHEAD UTILITY
- UNDERGROUND ELECTRIC
- TELEPHONE
- EASEMENT LINE



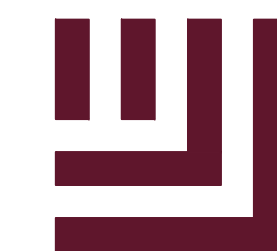
SEE SHEET C0.01 FOR ALL PROJECT, SITE, GRADING, STORM DRAINAGE AND UTILITY NOTES

ALL CONSTRUCTION SHALL BE IN ACCORDANCE WITH THE CURRENT TOWN OF CHAPEL HILL ENGINEERING DESIGN AND CONSTRUCTION STANDARDS



PRELIMINARY DRAWING - NOT RELEASED FOR CONSTRUCTION

M:\Projects\Trinisc\TRG-20000\04-Production\Engineering\Construction Drawings\TRG20000-OAU1.dwg, 1/29/2021 8:19:49 PM, James, Connor



McADAMS

The John R. McAdams Company, Inc.
2905 Meridian Parkway
Durham, NC 27713

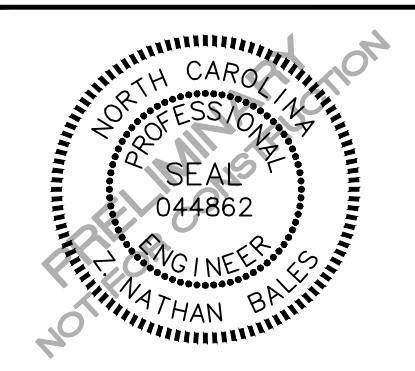
phone 919. 361. 5000
fax 919. 361. 2269
license number: C-0293, C-187

www.mcadamsco.com

CLIENT

TRINISC RESIDENTIAL GROUP
110 CORCORAN STREET, 5TH FLOOR
DURHAM, NORTH CAROLINA, 27701
PHONE: 919. 884. 7395

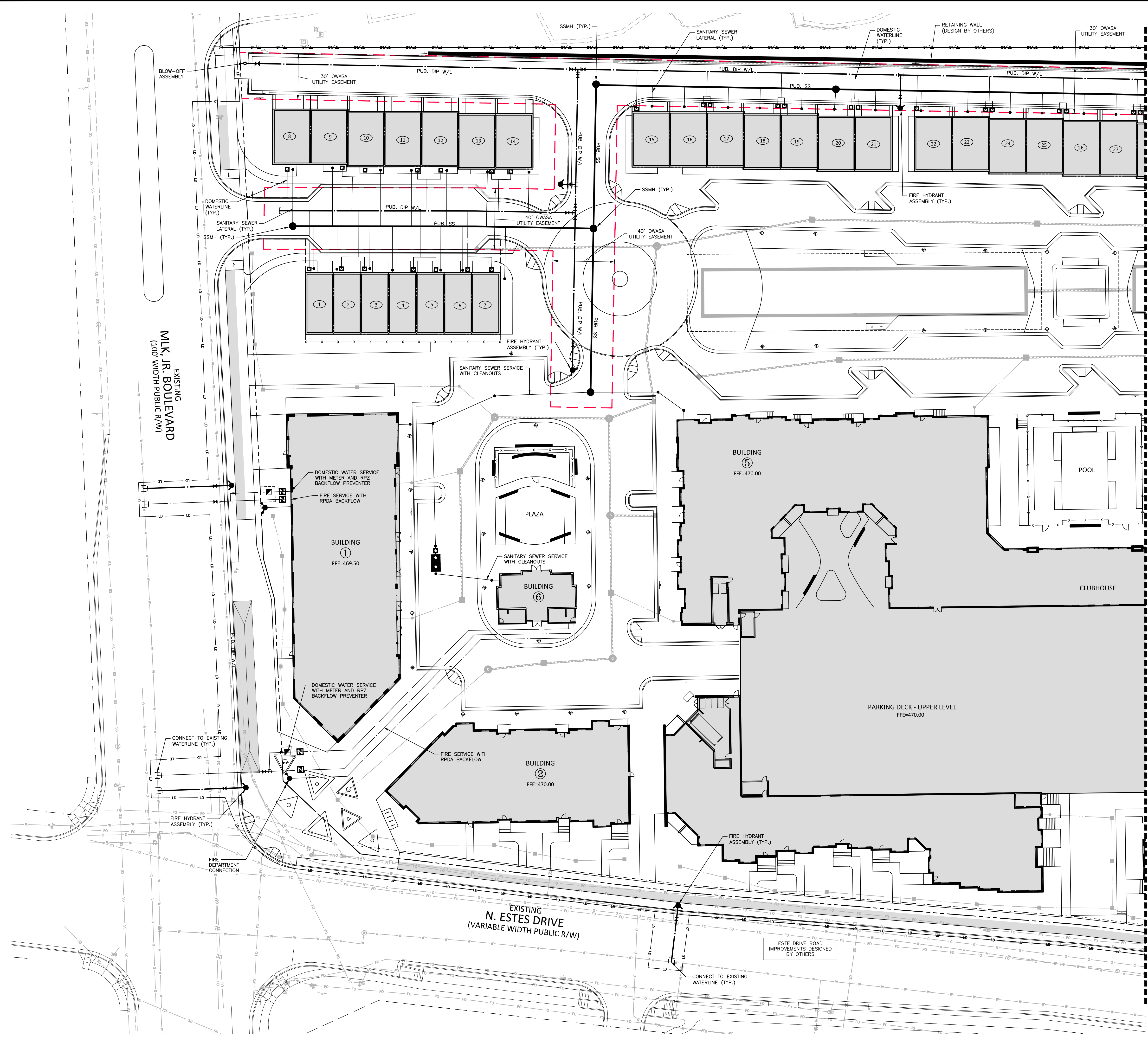
AURA
CONDITIONAL ZONING PERMIT
NORTH ESTES DRIVE
CHAPEL HILL, NORTH CAROLINA, 27516



UTILITY LEGEND

- FIRE HYDRANT ASSEMBLY
- FIRE DEPARTMENT CONNECTION (FDC)
- WATER METER
- WATER VALVE
- POST INDICATOR VALVE
- VALVE IN MANHOLE
- METER & VAULT
- BACKFLOW PREVENTER
- REDUCER
- PLUG
- BLOW-OFF ASSEMBLY
- SANITARY SEWER MANHOLE
- SEWER CLEAN-OUT
- GREASE TRAP
- SEWER FLOW DIRECTION ARROW
- YARD LIGHTS
- LIGHT POLE
- POWER POLE
- LINE BREAK SYMBOL
- WATERLINE
- WATER SERVICE LINE
- UTILITY SLEEVE
- SANITARY SEWER
- SEWER SERVICE LINE
- SEWER FORCE MAIN
- GAS LINE
- OVERHEAD UTILITY
- UNDERGROUND ELECTRIC
- TELEPHONE
- EASEMENT LINE

MATCH LINE - SEE SHEET C4.02

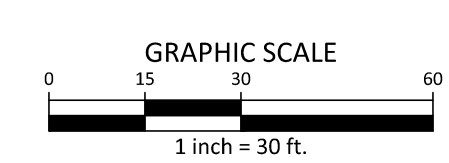
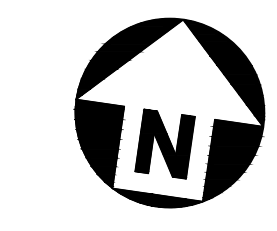


MILK, JR. BOULEVARD
(100' WIDTH PUBLIC R/W)

EXISTING
N. ESTES DRIVE
(VARIABLE WIDTH PUBLIC R/W)

SEE SHEET C0.01 FOR ALL PROJECT, SITE,
GRADING, STORM DRAINAGE AND UTILITY
NOTES

ALL CONSTRUCTION SHALL BE IN
ACCORDANCE WITH THE CURRENT TOWN
OF CHAPEL HILL ENGINEERING DESIGN AND
CONSTRUCTION STANDARDS



PRELIMINARY DRAWING - NOT RELEASED FOR CONSTRUCTION

REVISIONS

NO.	DATE	REVISION DESCRIPTION
1	11.13.2020	REVISED PER 1ST CZP COMMENTS
2	12.18.2020	REVISED PER 2ND CZP COMMENTS
3	01.29.2021	REVISED PER 3RD CZP COMMENTS

PLAN INFORMATION

PROJECT NO. TRG-20000
 FILENAME TRG20000-U1
 CHECKED BY ZNB
 DRAWN BY CJJ
 SCALE 1"=30'
 DATE 09.24.2020

SHEET

UTILITY PLAN - AREA A

C4.01

M:\Projects\Trinisc\TRG-20000\04-Production\Engineering\Construction Drawings\TRG20000-U1.dwg, 1/29/2021 8:32:26 PM, James Connor



McADAMS

The John R. McAdams Company, Inc.
2905 Meridian Parkway
Durham, NC 27713

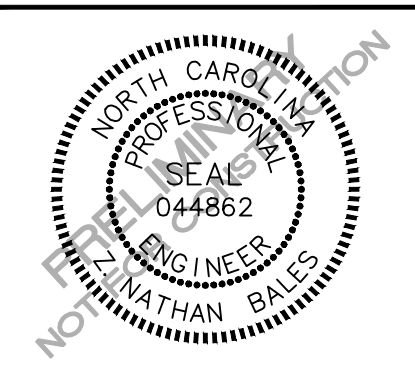
phone 919. 361. 5000
fax 919. 361. 2269
license number: C-0293, C-187

www.mcadamsco.com

CLIENT

TRINIS RESIDENTIAL GROUP
110 CORCORAN STREET, 5TH FLOOR
DURHAM, NORTH CAROLINA, 27701
PHONE: 919. 884. 7395

AURA
CONDITIONAL ZONING PERMIT
NORTH ESTES DRIVE
CHAPEL HILL, NORTH CAROLINA, 27516



REVISIONS

NO.	DATE	REVISION DESCRIPTION
1	11.13.2020	REVISED PER 1ST CZP COMMENTS
2	12.18.2020	REVISED PER 2ND CZP COMMENTS
3	01.29.2021	REVISED PER 3RD CZP COMMENTS

PLAN INFORMATION

PROJECT NO. TRG-20000
 FILENAME TRG20000-U1
 CHECKED BY ZNB
 DRAWN BY CJJ
 SCALE 1"=30'
 DATE 09.24.2020

SHEET

UTILITY PLAN - AREA B

C4.02

UTILITY LEGEND

- FIRE HYDRANT ASSEMBLY
- FIRE DEPARTMENT CONNECTION (FDC)
- WATER METER
- WATER VALVE
- POST INDICATOR VALVE
- VALVE IN MANHOLE
- METER & VAULT
- BACKFLOW PREVENTER
- REDUCER
- PLUG
- BLOW-OFF ASSEMBLY
- SANITARY SEWER MANHOLE
- SEWER CLEAN-OUT
- GREASE TRAP
- SEWER FLOW DIRECTION ARROW
- YARD LIGHTS
- LIGHT POLE
- POWER POLE
- LINE BREAK SYMBOL
- WATERLINE
- WATER SERVICE LINE
- UTILITY SLEEVE
- SANITARY SEWER
- SEWER SERVICE LINE
- SEWER FORCE MAIN
- GAS LINE
- OVERHEAD UTILITY
- UNDERGROUND ELECTRIC
- TELEPHONE
- EASEMENT LINE

DUKE ENERGY TRANSMISSION RIGHT OF WAY
 68' WIDTH REFERENCED IN PARCEL DEED DESCRIPTION
 SHOWN PENDING CLARIFICATION FROM DUKE ENERGY
 ASSET PROTECTION
 D.B. 524, PG. 1129
 LAND UNIT 0011789

N/F
 RUMMEL, WHITCOMB
 PIN: 9789-45-5646
 D.B. 1331, PG. 63

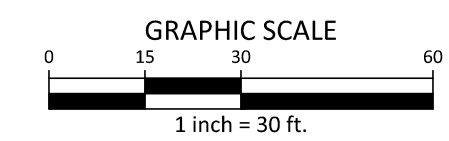
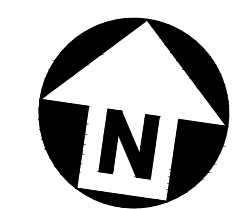
JORDAN LAKE
 RIPARIAN BUFFER

STORMWATER CONTROL
 MEASURE "A"
 (SEE "CS" SHEETS)

WETLANDS

SEE SHEET C0.01 FOR ALL PROJECT, SITE,
 GRADING, STORM DRAINAGE AND UTILITY
 NOTES

ALL CONSTRUCTION SHALL BE IN
 ACCORDANCE WITH THE CURRENT TOWN
 OF CHAPEL HILL ENGINEERING DESIGN AND
 CONSTRUCTION STANDARDS

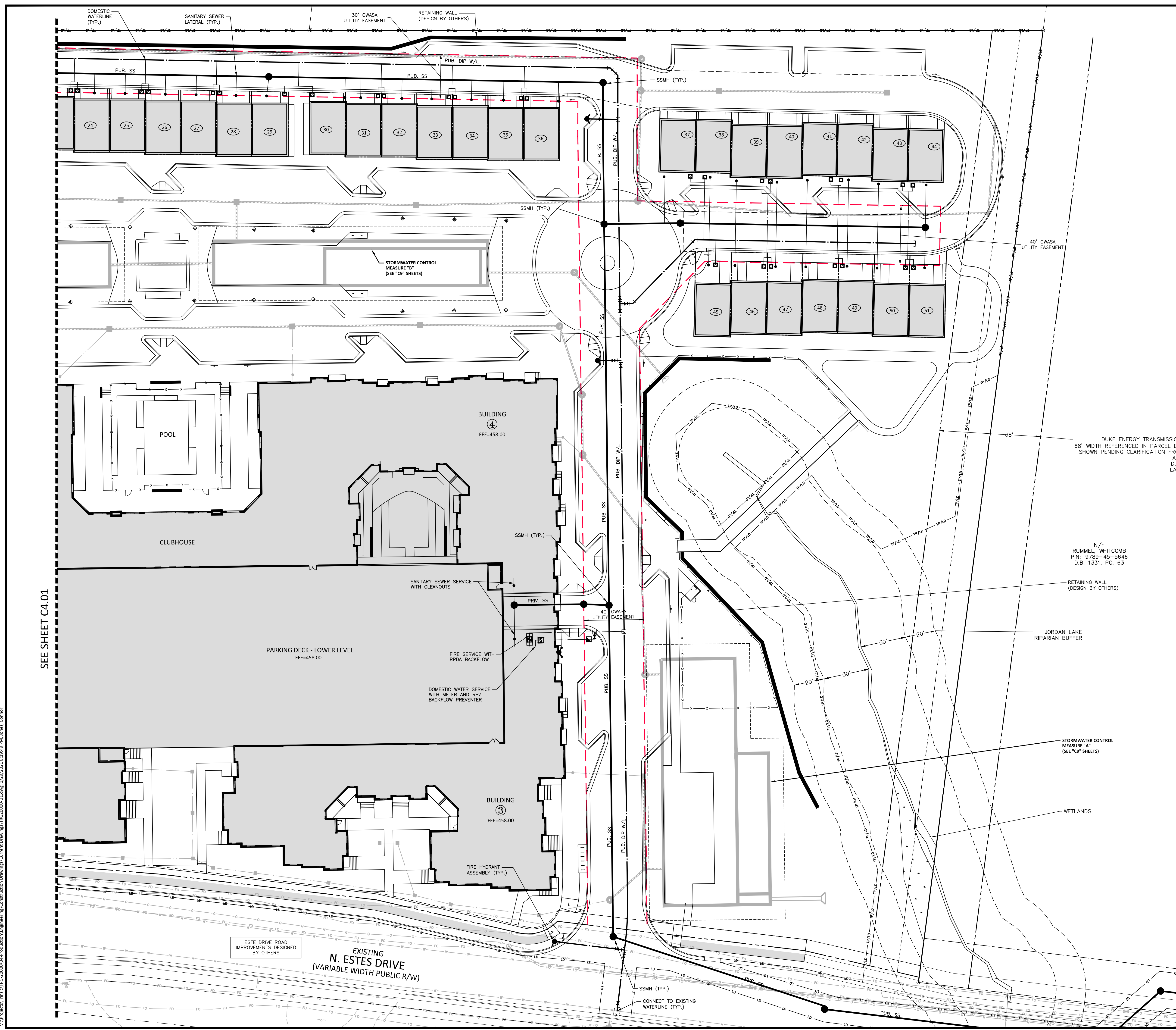


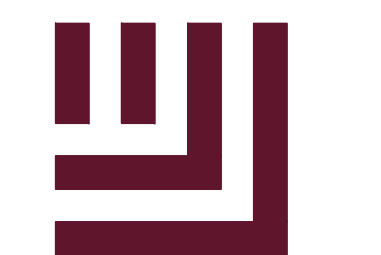
SEE SHEET C4.02

PRELIMINARY DRAWING - NOT RELEASED FOR CONSTRUCTION

SEE SHEET C4.01

M:\Projects\Trinis\TRG-20000\04-Production\Engineering\Construction Drawings\TRG20000-U1.dwg, 1/29/2021 8:19:49 PM, Jones, Connor





McADAMS

The John R. McAdams Company, Inc.
2905 Meridian Parkway
Durham, NC 27713

phone 919. 361. 5000
fax 919. 361. 2269
license number: C-0293, C-187

www.mcadamsco.com

CLIENT

TRINCS RESIDENTIAL GROUP
110 CORCORAN STREET, 5TH FLOOR
DURHAM, NORTH CAROLINA, 27701
PHONE: 919. 884. 7395

AURA

CONDITIONAL ZONING PERMIT
NORTH ESTES DRIVE
CHAPEL HILL, NORTH CAROLINA, 27516

REVISIONS

NO.	DATE	REVISION DESCRIPTION
1	11.13.2020	REVISED PER 1ST C2P COMMENTS
2	12.18.2020	REVISED PER 2ND C2P COMMENTS
3	01.29.2021	REVISED PER 3RD C2P COMMENTS

PLAN INFORMATION

PROJECT NO. TRG-20000
FILENAME TRG20000-CM1
CHECKED BY ZNB
DRAWN BY CJJ
SCALE 1"=50'
DATE 09.24.2020

SHEET

CONSTRUCTION AND TRANSPORTATION MANAGEMENT PLAN

C7.00

CONSTRUCTION MANAGEMENT NOTES:

- ALL LARGE TRUCKS AS RELATED TO VEHICULAR CONSTRUCTION TRAFFIC SHALL ENTER/LEAVE THE SITE THROUGH THE TEMPORARY CONSTRUCTION ENTRANCES & EXITS AS SHOWN ON THIS PLAN. LANE CLOSURES SHALL BE ESTABLISHED AS SHOWN ON THIS PLAN AND CONSTRUCTION PERSONNEL SHALL BE IN ATTENDANCE TO MANAGE AND DIRECT VEHICULAR AND PEDESTRIAN TRAFFIC.
- ENTRANCE AND EXIT GATES SHALL BE CLOSED UNLESS CONSTRUCTION OR DELIVERY VEHICLES ARE ENTERING OR EXITING THE CONSTRUCTION SITE.
- THE CONTRACTOR SHALL PROVIDE WORK ZONE TRAFFIC CONTROL DEVICES IN ACCORDANCE WITH ALL APPLICABLE NCDOT STANDARDS. REFER TO THE TRAFFIC AND PEDESTRIAN CONTROL PLAN FOR SPECIFIC NOTES AND DETAILS.
- NO OPEN BURNING SHALL BE PERMITTED.
- THE APPLICANT SHALL POST A CONSTRUCTION SIGN ON THE DEVELOPMENT SITE THAT LISTS THE FOLLOWING:
 - PROPERTY OWNER'S REPRESENTATIVE & TELEPHONE NUMBER
 - CONTRACTOR'S REPRESENTATIVE & TELEPHONE NUMBER
 - TELEPHONE NUMBER FOR REGULATORY INFO AT TIME OF BUILDING PERMIT
 - SIGN MAY BE A MAXIMUM OF 32 SF AND A MAXIMUM HEIGHT OF 8 FT.
- FENCING AROUND PROJECT SHALL INCLUDE ACCESS GATES WITH A 20-FOOT SWING OR SLIDE MOTION.
- CONSTRUCTION FENCE SHALL BE MODIFIED AS REQUIRED DURING CONSTRUCTION PHASING FOR PEDESTRIAN CIRCULATION.
- PRIOR TO ANY TRAFFIC LANE AND/OR SIDEWALK CLOSURES, THE APPLICANT SHALL CONTACT THE CHAPEL HILL TRAFFIC ENGINEERING OFFICE (919-969-5096 OR 919-969-5100) AT LEAST 5 WORKING DAYS BEFORE THE PROPOSED WORK TO APPLY FOR A LAND CLOSURE PERMIT.
- ROAD CLOSURES ON PUBLIC STREETS WILL BE PERMITTED BETWEEN MUST BE COORDINATED WITH AND APPROVED BY THE TOWN OF CHAPEL HILL.
- TEMPORARY STREET ROAD SIGNS ARE REQUIRED AT EACH STREET INTERSECTION WHEN CONSTRUCTION OF NEW ROADS ALLOWS FOR THE PASSAGE OF VEHICLES. SIGNS SHALL BE OF APPROVED SIZE, WEATHER RESISTANT AND BE MAINTAINED UNTIL REPLACED BY PERMANENT SIGNS.
- CONTRACTOR TO PROVIDE DEDICATED ONSITE PARKING SPACES FOR INSPECTORS AT EACH BUILDING AND NEAR THE JOB TRAILER FOR THE DURATION OF CONSTRUCTION.
- ROADS WITH CURB AND GUTTER AND THE FIRST LIFT OF ASPHALT WILL NEED TO BE CONSTRUCTED BEFORE COMBUSTIBLES ARE ON SITE IN ORDER TO MEET REQUIREMENTS FROM FIRE CODE, STORMWATER, AND OWASA. HYDRANTS SHALL BE ACTIVE IN THE AREAS FOR CONSTRUCTION.

DUKE ENERGY TRANSMISSION RIGHT OF WAY
68' WIDTH REFERENCED IN PARCEL DEED DESCRIPTION
SHOWN PENDING CLARIFICATION FROM DUKE ENERGY
ASSET PROTECTION
D.B. 524, PG. 1129
LAND UNIT 0011789

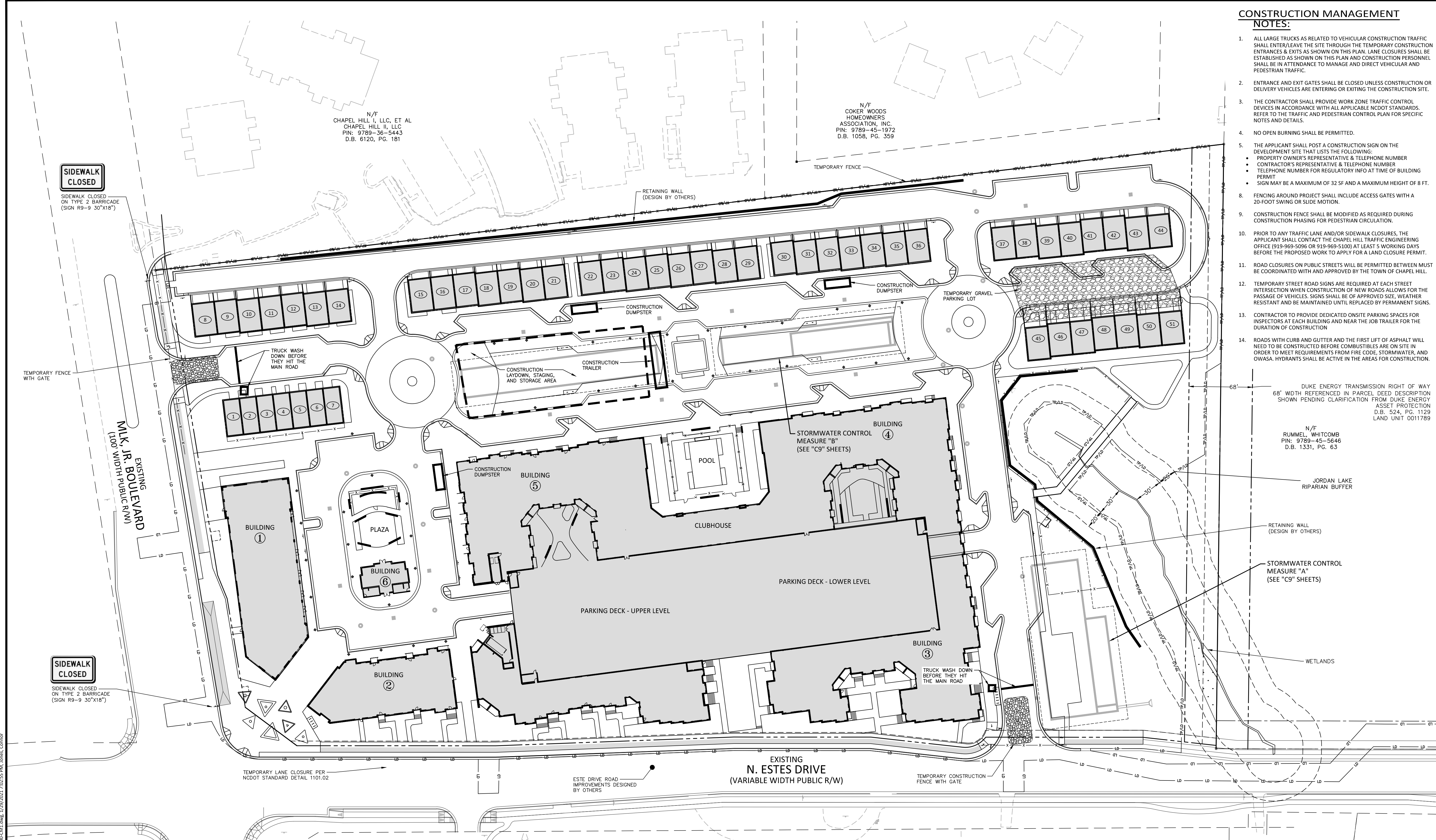
N/F
RUMMEL, WHITCOMB
PIN: 9789-45-5646
D.B. 1331, PG. 63

JORDAN LAKE
RIPARIAN BUFFER

RETAINING WALL
(DESIGN BY OTHERS)

STORMWATER CONTROL
MEASURE "A"
(SEE "C9" SHEETS)

WETLANDS



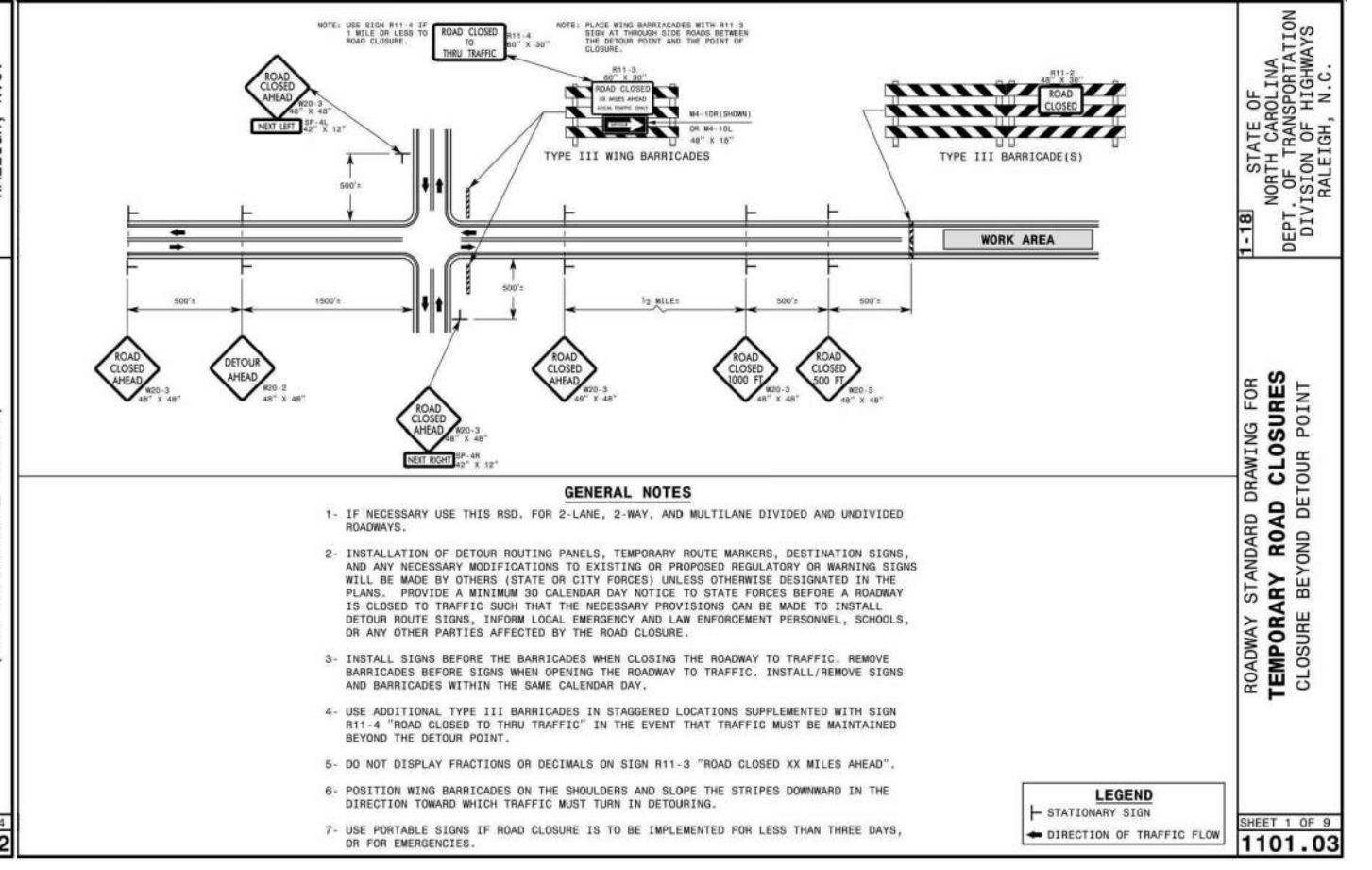
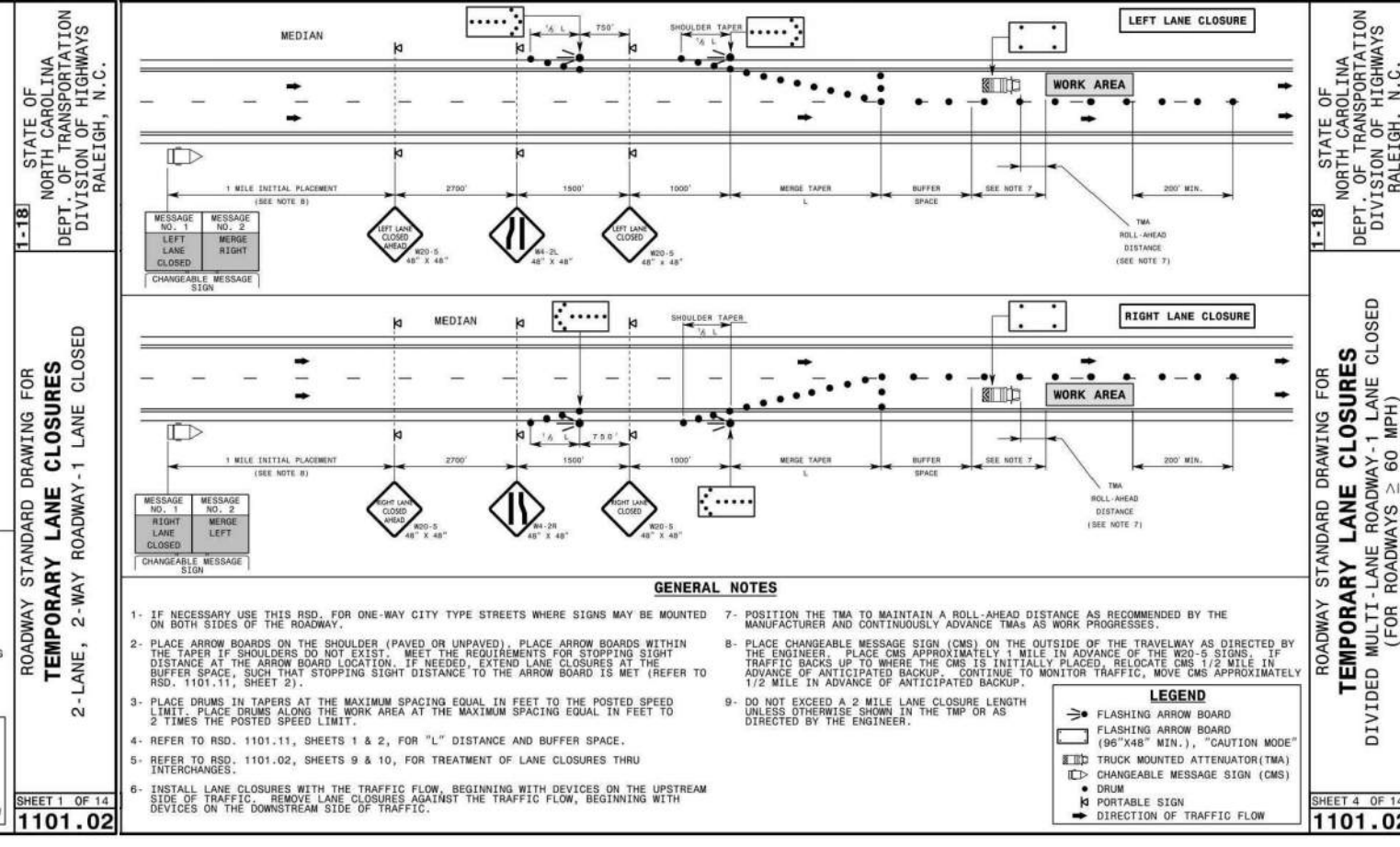
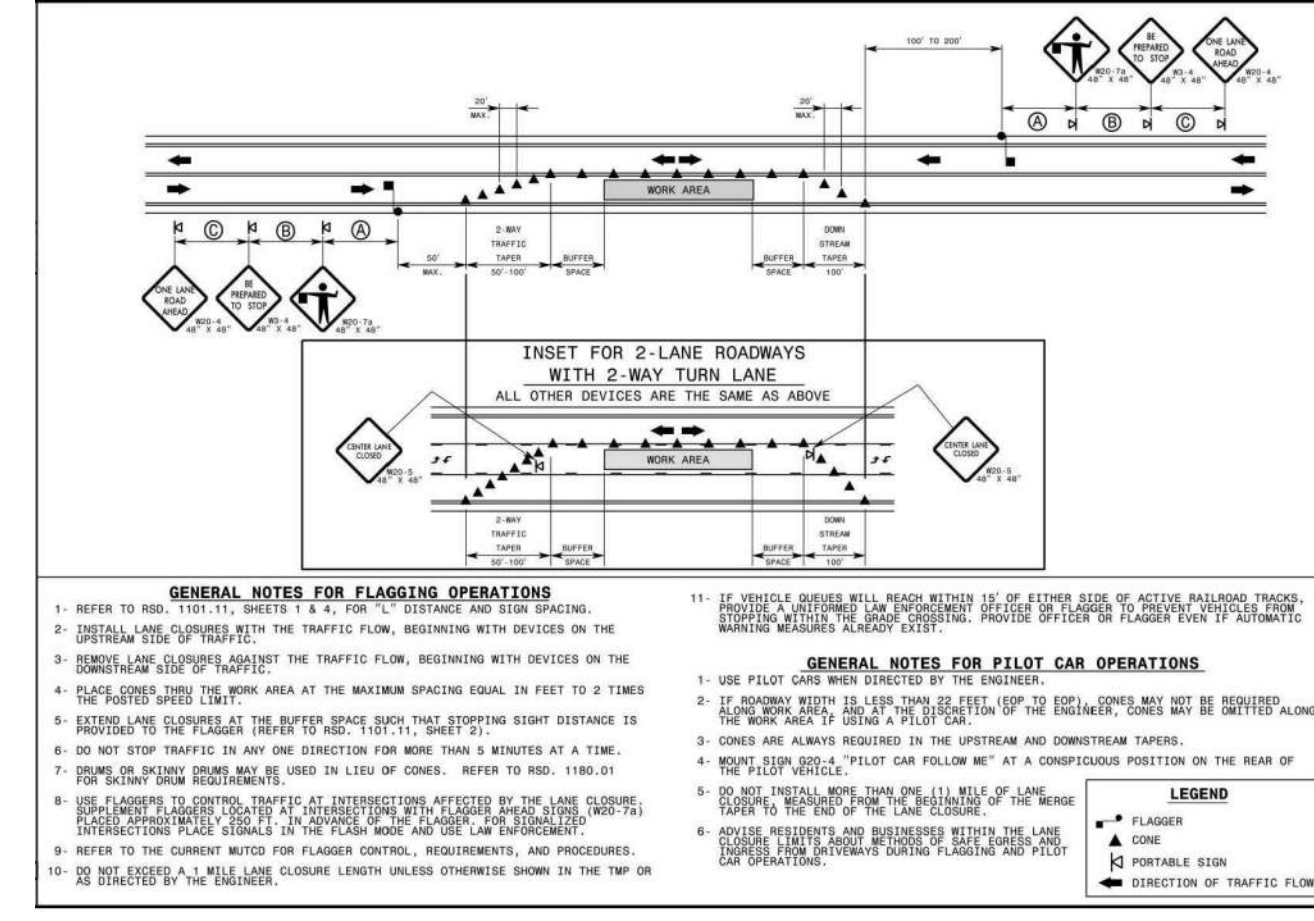
SIDEWALK CLOSED

SIDEWALK CLOSED ON TYPE 2 BARRICADE (SIGN R9-9 30"x18")

SIDEWALK CLOSED

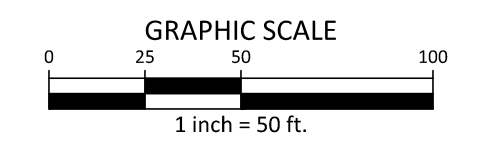
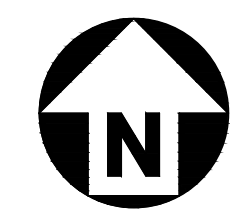
SIDEWALK CLOSED ON TYPE 2 BARRICADE (SIGN R9-9 30"x18")

M:\Projects\TrinCS\TRG-20000\04-Production\Drawings\Construction\Construction Drawings\TRG20000-CM1.dwg, 1/29/2021, 7:02:55 PM, Jones, Connor

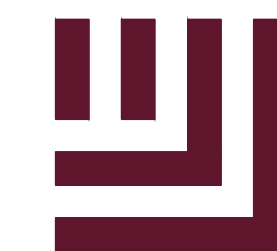


SEE SHEET C0.01 FOR ALL PROJECT, SITE, GRADING, STORM DRAINAGE AND UTILITY NOTES

ALL CONSTRUCTION SHALL BE IN ACCORDANCE WITH THE CURRENT TOWN OF CHAPEL HILL ENGINEERING DESIGN AND CONSTRUCTION STANDARDS



PRELIMINARY DRAWING - NOT RELEASED FOR CONSTRUCTION



McADAMS

The John R. McAdams Company, Inc.
2905 Meridian Parkway
Durham, NC 27713

phone 919. 361. 5000
fax 919. 361. 2269
license number: C-0293, C-187

www.mcadamsco.com

CLIENT

TRINIS RESIDENTIAL GROUP
110 CORCORAN STREET, 5TH FLOOR
DURHAM, NORTH CAROLINA, 27701
PHONE: 919. 884. 7395

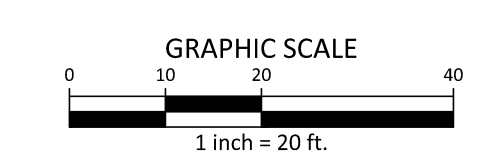
AURA
CONDITIONAL ZONING PERMIT
NORTH ESTES DRIVE
CHAPEL HILL, NORTH CAROLINA, 27516



NOTE:
SEE STORMWATER IMPACT ANALYSIS (SIA)
FOR MORE INFORMATION REGARDING
VAULT DESIGN.

SEE SHEET C0.01 FOR ALL PROJECT, SITE,
GRADING, STORM DRAINAGE AND UTILITY
NOTES

ALL CONSTRUCTION SHALL BE IN
ACCORDANCE WITH THE CURRENT TOWN
OF CHAPEL HILL ENGINEERING DESIGN AND
CONSTRUCTION STANDARDS



UNDERGROUND SAND FILTER & DETENTION SYSTEM 'A' PLAN VIEW
1" = 20'

REVISIONS

NO.	DATE	REVISION DESCRIPTION
1	11.13.2020	REVISED PER 1ST CZP COMMENTS
2	12.18.2020	REVISED PER 2ND CZP COMMENTS
3	01.29.2021	REVISED PER 3RD CZP COMMENTS

PLAN INFORMATION

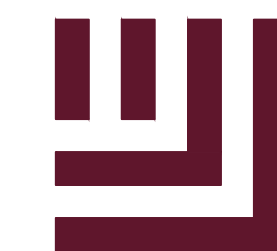
PROJECT NO.	TRG-20000
FILENAME	TRG20000-SWA
CHECKED BY	DCW
DRAWN BY	LK
SCALE	1"=20'
DATE	01.29.2021

SHEET

**STORMWATER CONTROL
MEASURE 'A' PLAN VIEW**

C9.00A

M:\Projects\Trinis\TRG-20000\04-Production\Water Resources\CZP\Current Drawings\TRG20000 - SWA.dwg, 1/29/2021, 4:37:30 PM, klabrich, lauryn



McADAMS

The John R. McAdams Company, Inc.
2905 Meridian Parkway
Durham, NC 27713

phone 919. 361. 5000
fax 919. 361. 2269
license number: C-0293, C-187

www.mcadamsco.com

CLIENT

TRINISC RESIDENTIAL GROUP
110 CORCORAN STREET, 5TH FLOOR
DURHAM, NORTH CAROLINA, 27701
PHONE: 919. 884. 7395

AURA
CONDITIONAL ZONING PERMIT
NORTH ESTES DRIVE
CHAPEL HILL, NORTH CAROLINA, 27516

REVISIONS

NO.	DATE	REVISION DESCRIPTION
1	11. 13. 2020	REVISED PER 1ST CZP COMMENTS
2	12. 18. 2020	REVISED PER 2ND CZP COMMENTS

PLAN INFORMATION

PROJECT NO. TRG-20000
 FILENAME TRG20000-SWA
 CHECKED BY DCW
 DRAWN BY LK
 SCALE N.T.S.
 DATE 12.21.2020

SHEET

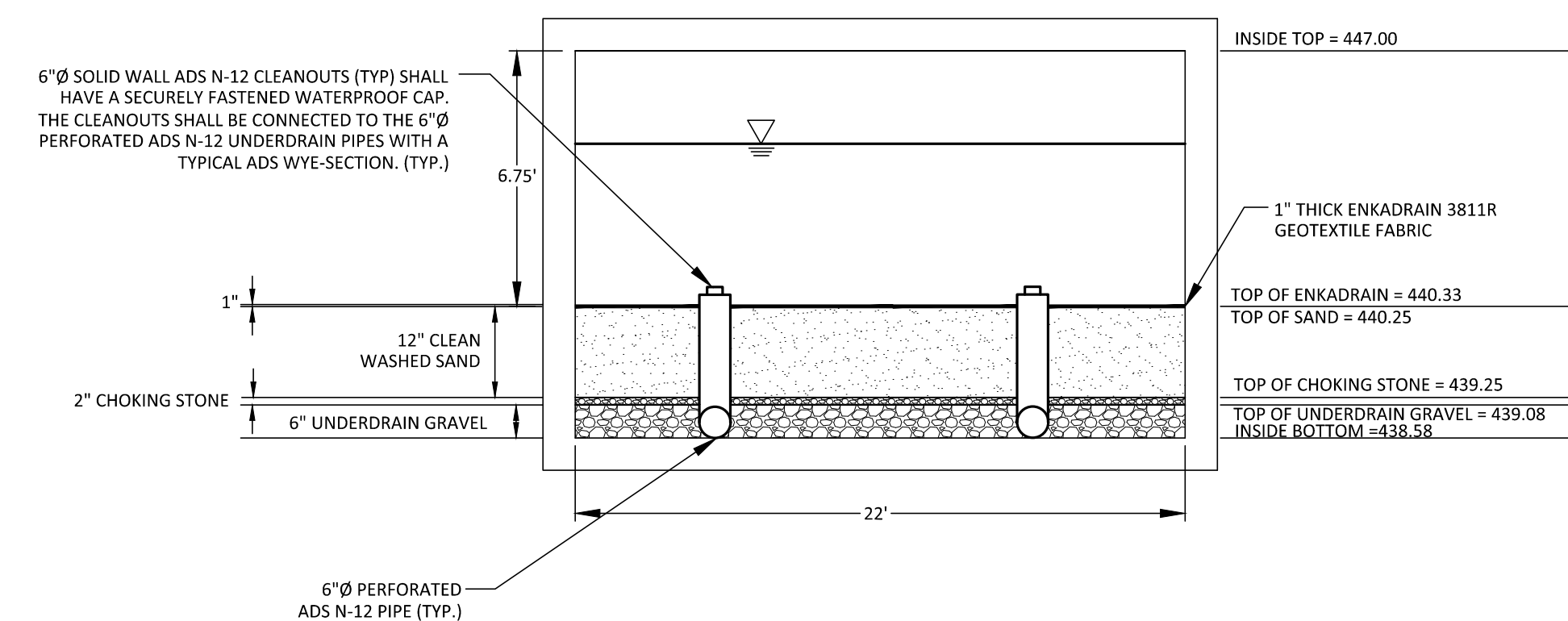
STORMWATER CONTROL MEASURE 'A' DETAILS

C9.01A

SEE SHEET C0.01 FOR ALL PROJECT, SITE, GRADING, STORM DRAINAGE AND UTILITY NOTES

ALL CONSTRUCTION SHALL BE IN ACCORDANCE WITH THE CURRENT TOWN OF CHAPEL HILL ENGINEERING DESIGN AND CONSTRUCTION STANDARDS

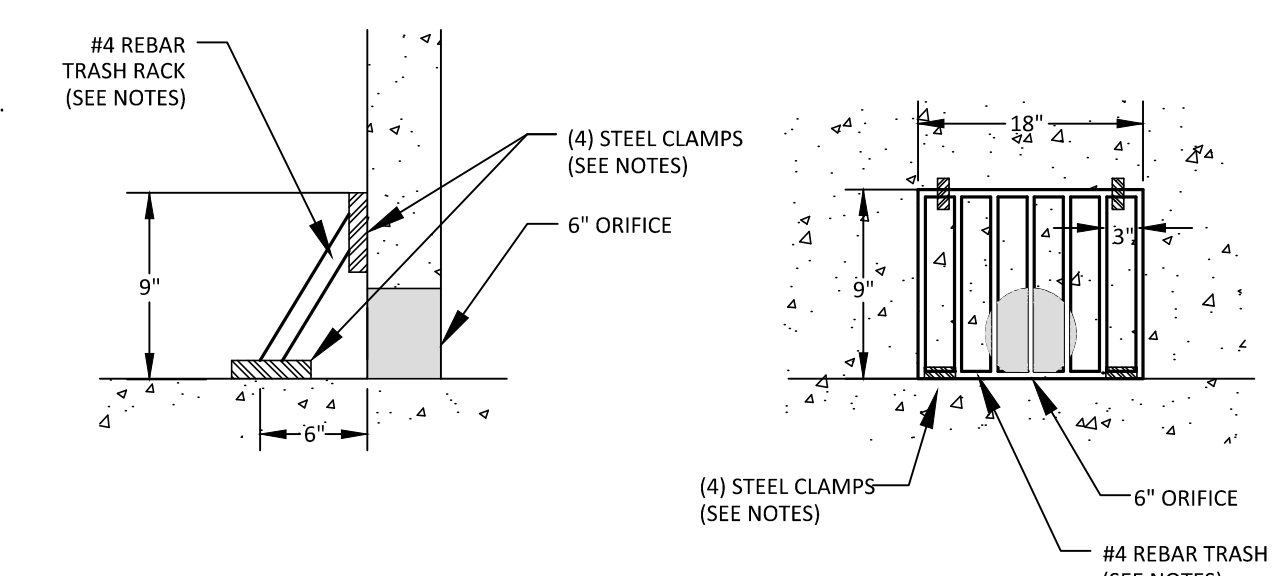
PRELIMINARY DRAWING - NOT RELEASED FOR CONSTRUCTION



SAND CHAMBER FILTER MEDIA DETAIL N.T.S.

NOTES:

- ATTACH TRASH RACK WITH (4) HOT DIPPED GALVANIZED STEEL CLAMPS. EACH CLAMP ATTACHED TO WEIR BOX BY (2) 4"x1/4" CONCRETE ANCHOR BOLTS. EACH CLAMP SHALL BE COATED WITH AN EPOXY COATING.
- ALL REBAR TO BE GALVANIZED #4 REBAR WITH AN EPOXY COATING.
- BAR SPACING TO BE ON-CENTER MEASUREMENT.

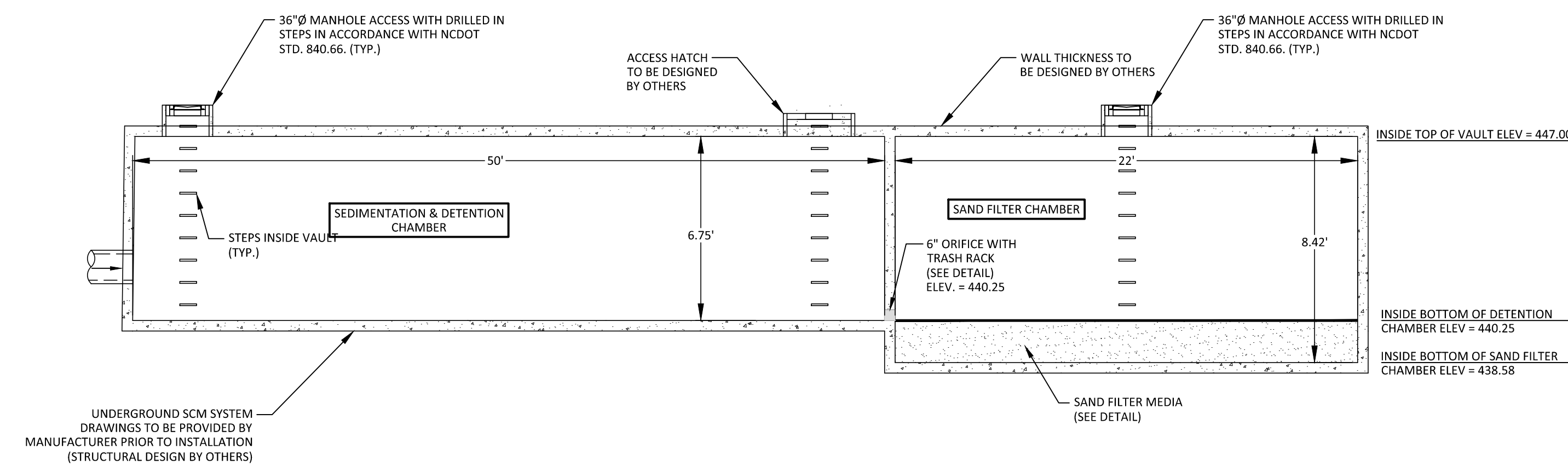


6" ORIFICE TRASH RACK DETAIL N.T.S.

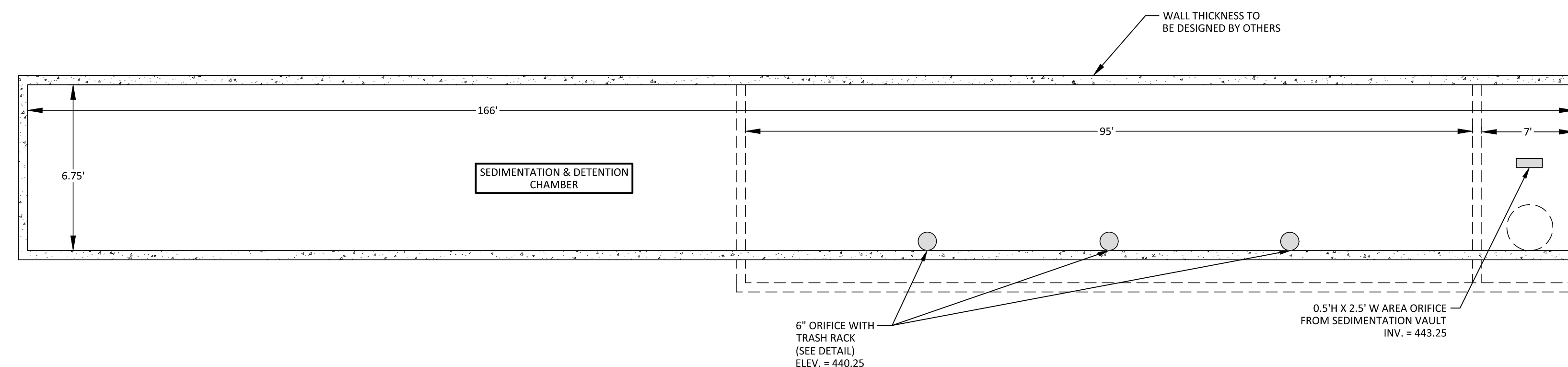
NOTE: THE ONSITE GEOTECHNICAL ENGINEER SHALL CERTIFY ALL COMPONENTS OF THE SAND FILTER.

MATERIAL	SPECIFICATIONS / TEST METHOD	SIZE	NOTES
SAND	CLEAN ASBESTO M-6 OR ASTM-C-33 MEDIUM AGGREGATE SAND	0.02" TO 0.04"	SAND SUBSTITUTIONS SUCH AS DIABASE AND GRAYSTONE #10 ARE NOT ACCEPTABLE. NO CALCIUM CARBONATE OR ORGANIC SAND SUBSTITUTIONS ARE ACCEPTABLE. NO "ROCK DUST" CAN BE USED FOR SAND.
UNDERDRAIN GRAVEL (6" LAYER UNDER CHOKING STONE)	ASTM-C-33	#57 STONE	
CHOKING STONE (2" LAYER BETWEEN SAND AND GRAVEL)	ASTM-C-33	#8 STONE	
GEOTEXTILE FABRIC ABOVE SAND LAYER	ENKADRAIN 3811R		ENKADRAIN 3811R OR ENGINEER APPROVED EQUIVALENT TO BE INSTALLED PER MANUFACTURER'S SPECIFICATIONS
UNDERDRAIN PIPING	AASHTO M-252	6" ADS N-12 (DOUBLE WALL HDPE PIPE)	3/8" PERFORATIONS @ 6" ON CENTER, 4 HOLES PER ROW. MINIMUM OF 4" OF GRAVEL OVER PIPES, 1" TOTAL LAYER OF GRAVEL

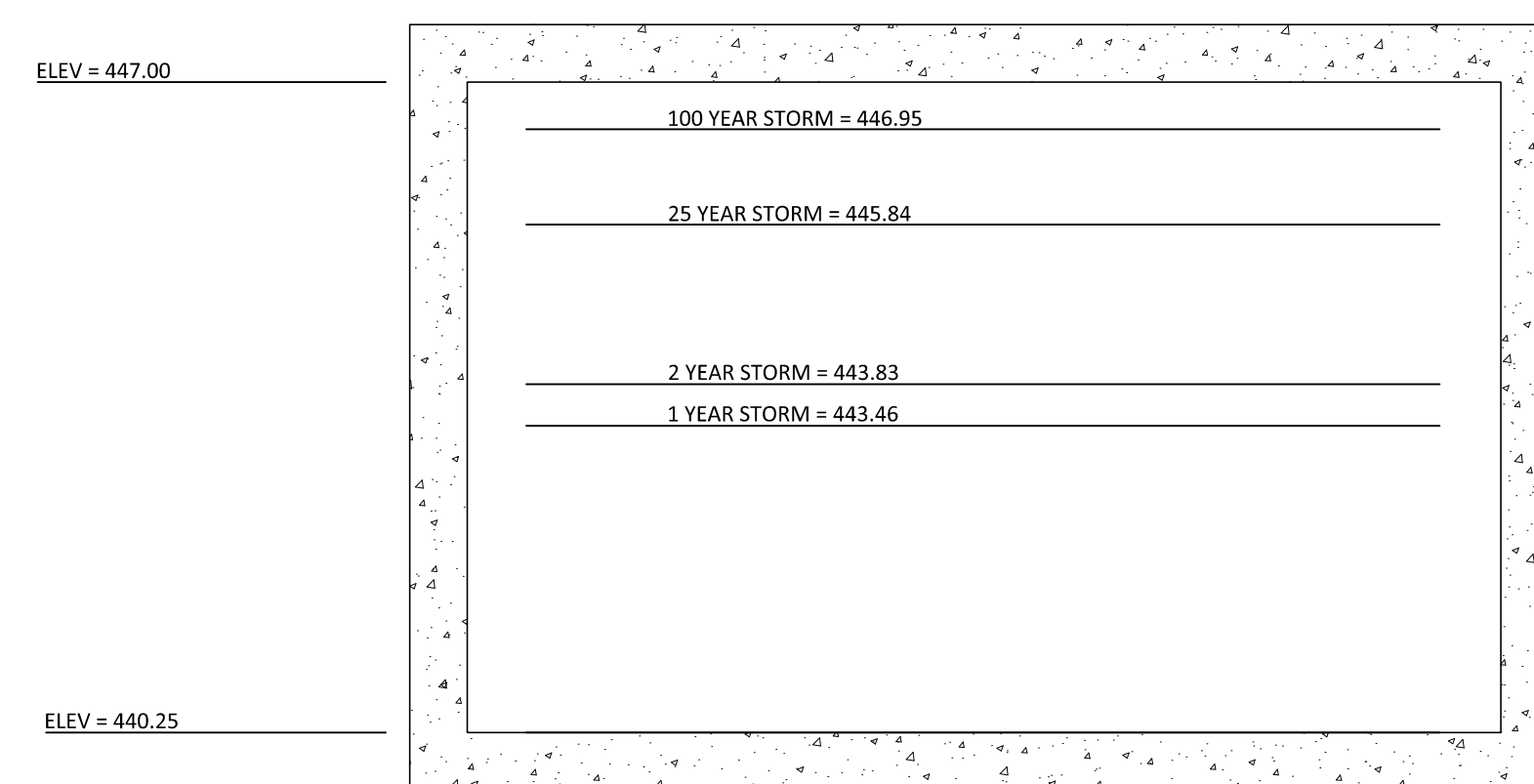
SAND FILTER MATERIAL SPECIFICATIONS N.T.S.



SAND FILTER AND DETENTION VAULT A' - A' PROFILE VIEW N.T.S.

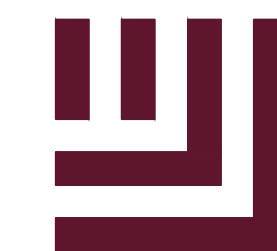


DETENTION VAULT B' - B' PROFILE VIEW N.T.S.



DETENTION VAULT CROSS SECTION N.T.S.

M:\Projects\Trinisc\TRG-20000\04-Production\Water Resources\CP\Current Drawings\TRG20000 - SCM A.dwg, 12/22/2020 10:04:04 AM, Kabirica, Jayam



McADAMS

The John R. McAdams Company, Inc.
2905 Meridian Parkway
Durham, NC 27713

phone 919. 361. 5000
fax 919. 361. 2269
license number: C-0293, C-187

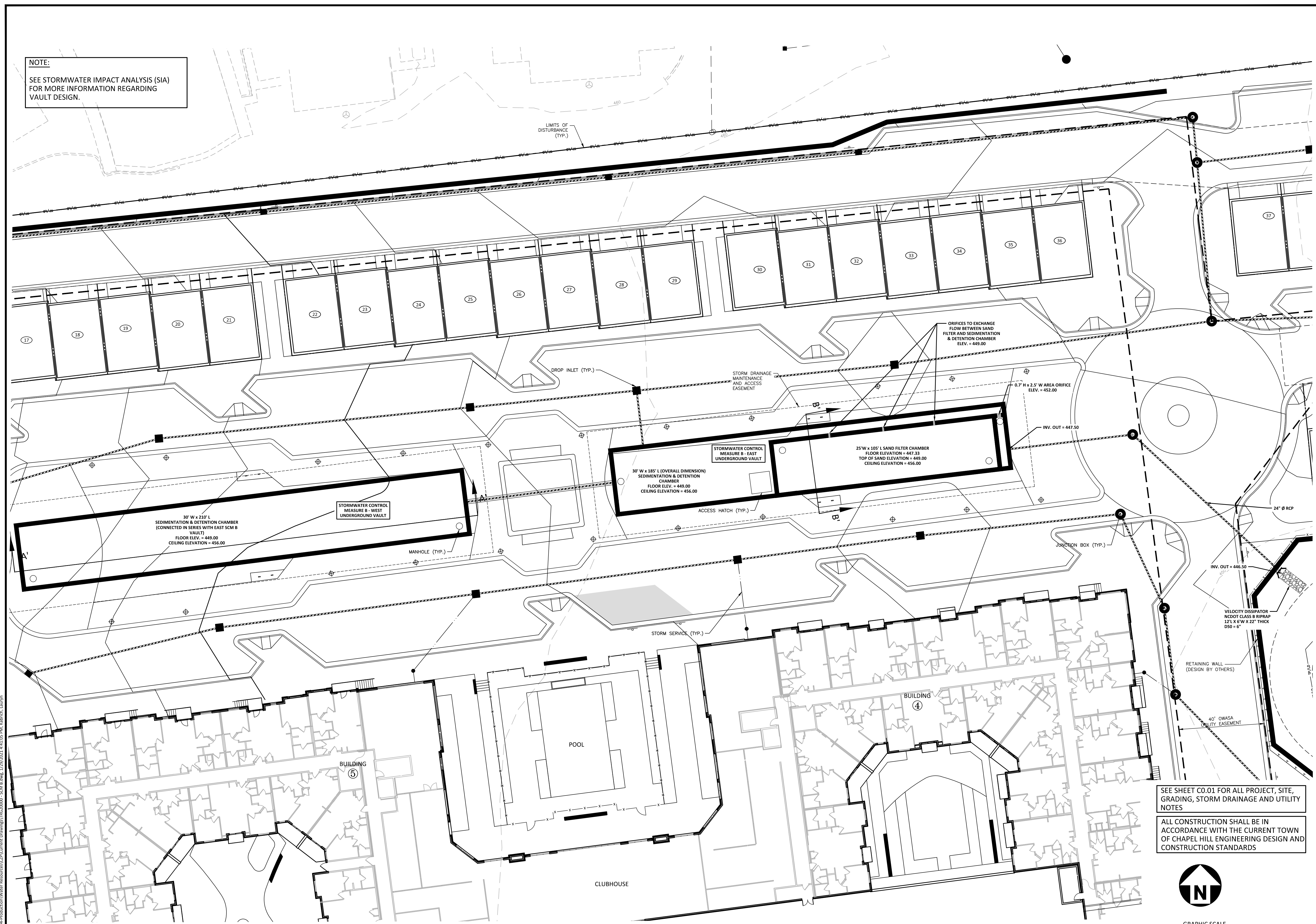
www.mcadamsco.com

CLIENT

TRINIS RESIDENTIAL GROUP
110 CORCORAN STREET, 5TH FLOOR
DURHAM, NORTH CAROLINA, 27701
PHONE: 919. 884. 7395

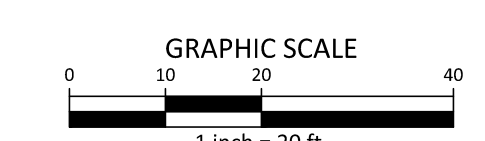
AURA
CONDITIONAL ZONING PERMIT
NORTH ESTES DRIVE
CHAPEL HILL, NORTH CAROLINA, 27516

NOTE:
SEE STORMWATER IMPACT ANALYSIS (SIA)
FOR MORE INFORMATION REGARDING
VAULT DESIGN.



SEE SHEET C0.01 FOR ALL PROJECT, SITE,
GRADING, STORM DRAINAGE AND UTILITY
NOTES

ALL CONSTRUCTION SHALL BE IN
ACCORDANCE WITH THE CURRENT TOWN
OF CHAPEL HILL ENGINEERING DESIGN AND
CONSTRUCTION STANDARDS



UNDERGROUND SAND FILTER & DETENTION SYSTEM 'B' PLAN VIEW
1" = 20'

REVISIONS

NO.	DATE	REVISION DESCRIPTION
1	11.13.2020	REVISED PER 1ST CZP COMMENTS
2	12.18.2020	REVISED PER 2ND CZP COMMENTS
3	01.29.2021	REVISED PER 3RD CZP COMMENTS

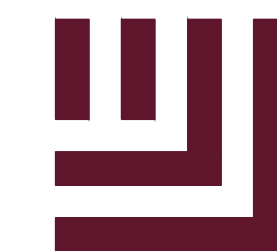
PLAN INFORMATION

PROJECT NO.	TRG-20000
FILENAME	TRG20000-SWB
CHECKED BY	DCW
DRAWN BY	LK
SCALE	1"=20'
DATE	01.29.2021

SHEET

**STORMWATER CONTROL
MEASURE 'B' PLAN VIEW**

C9.00B



McADAMS

The John R. McAdams Company, Inc.
2905 Meridian Parkway
Durham, NC 27713

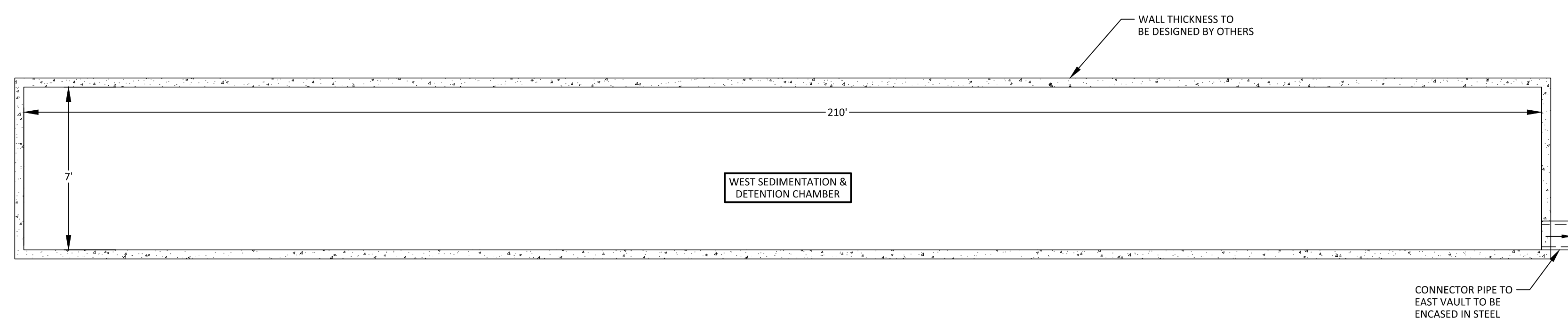
phone 919. 361. 5000
fax 919. 361. 2269
license number: C-0293, C-187

www.mcadamsco.com

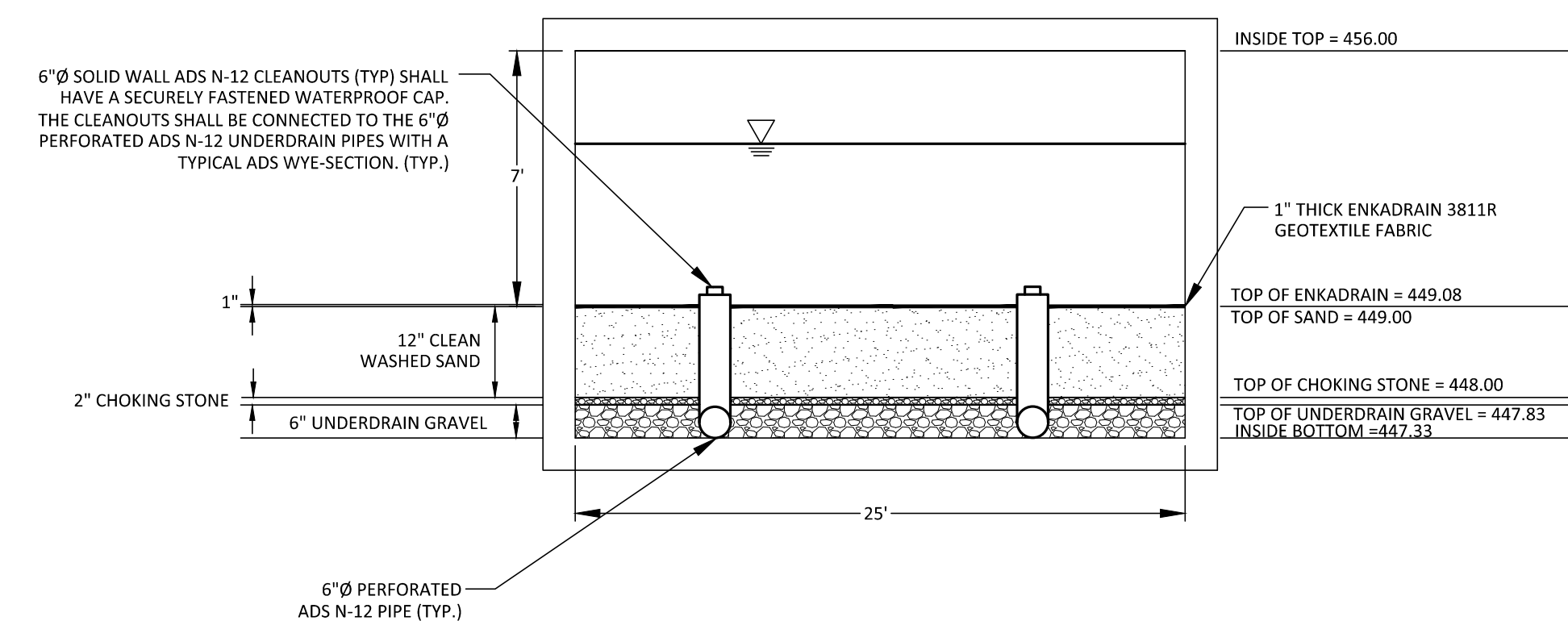
CLIENT

TRINISC RESIDENTIAL GROUP
110 CORCORAN STREET, 5TH FLOOR
DURHAM, NORTH CAROLINA, 27701
PHONE: 919. 884. 7395

AURA
CONDITIONAL ZONING PERMIT
NORTH ESTES DRIVE
CHAPEL HILL, NORTH CAROLINA, 27516



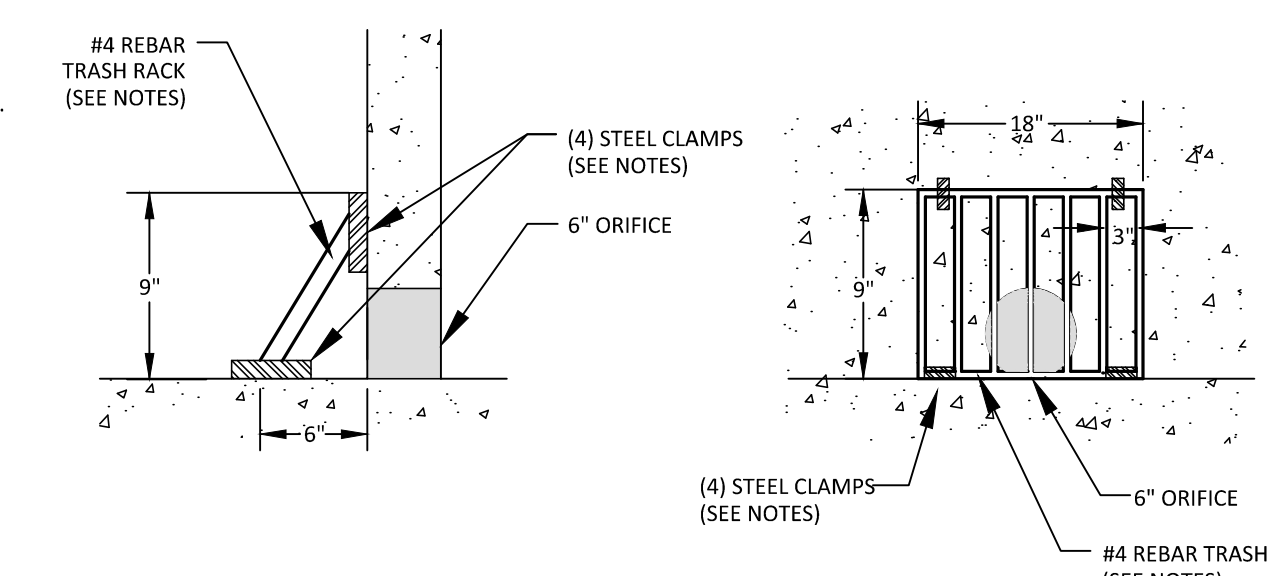
DETENTION VAULT A' - A' PROFILE VIEW
N.T.S.



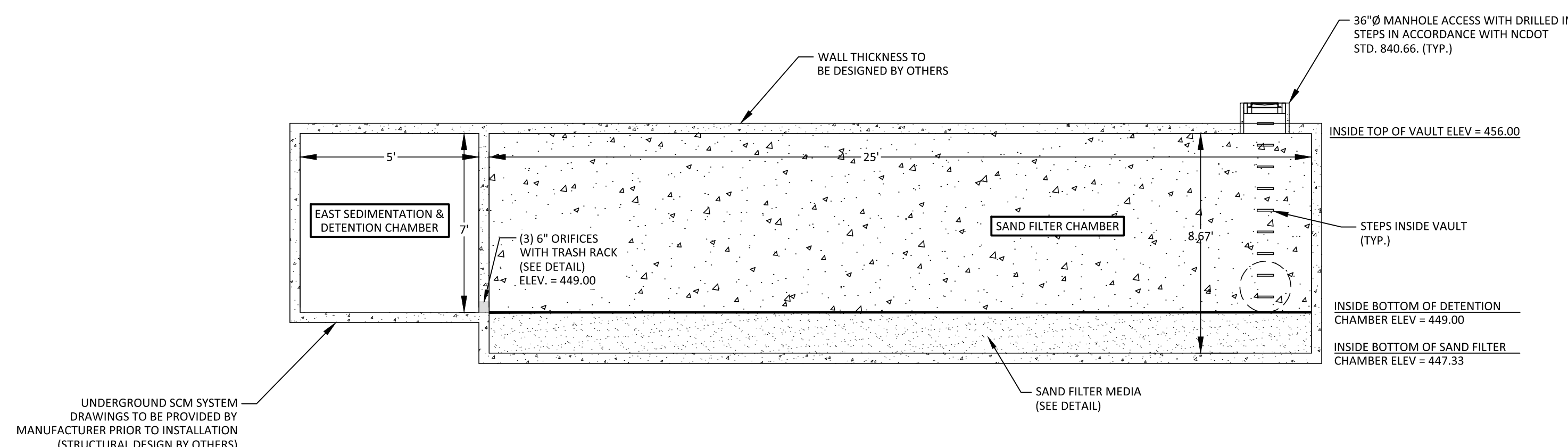
SAND CHAMBER FILTER MEDIA DETAIL
N.T.S.

NOTES:

1. ATTACH TRASH RACK WITH (4) HOT DIPPED GALVANIZED STEEL CLAMPS. EACH CLAMP ATTACHED TO WEIR BOX BY (2) 4"x1/4" CONCRETE ANCHOR BOLTS. EACH CLAMP SHALL BE COATED WITH AN EPOXY COATING.
2. ALL REBAR TO BE GALVANIZED #4 REBAR WITH AN EPOXY COATING.
3. BAR SPACING TO BE ON-CENTER MEASUREMENT.



6\"/>



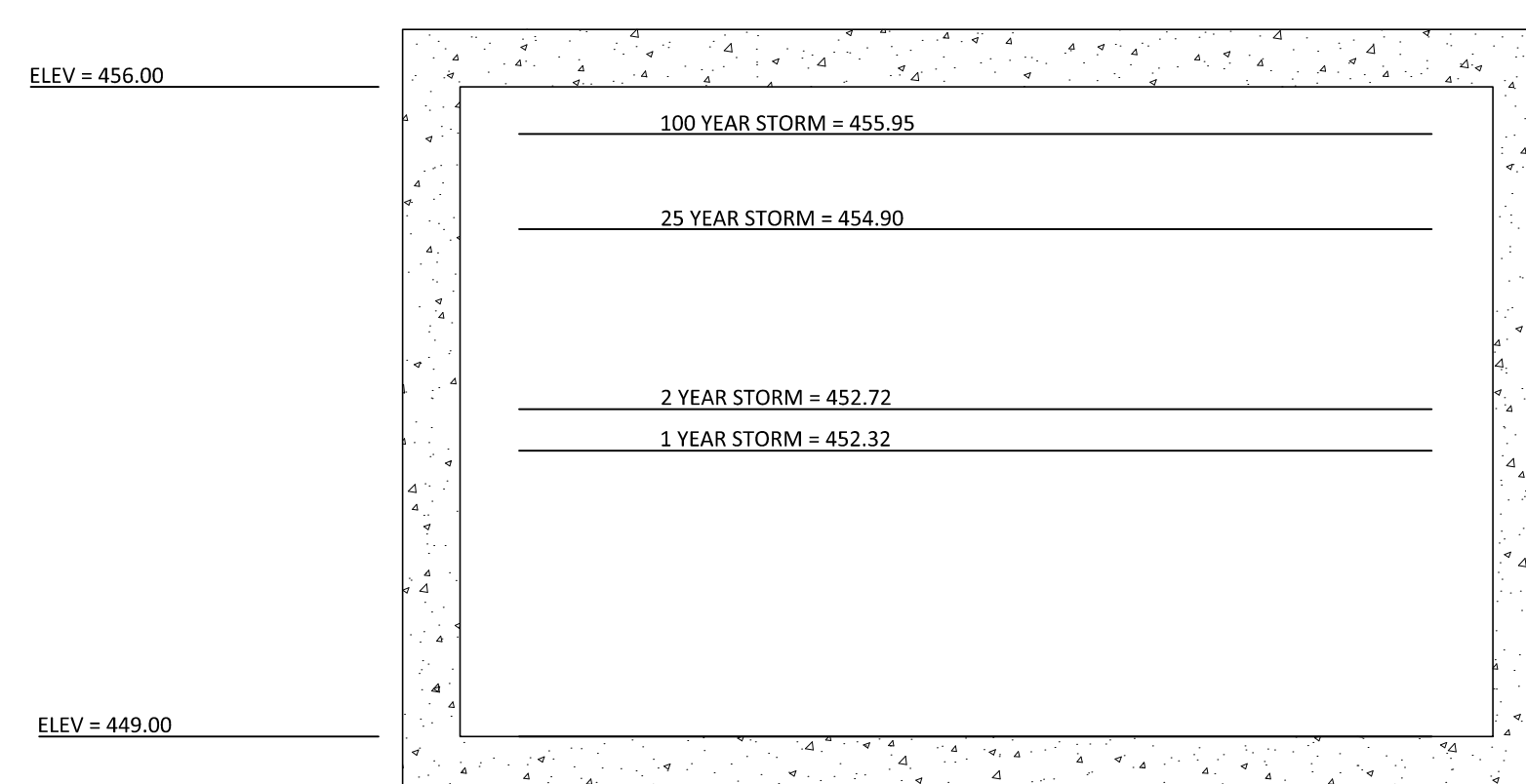
SAND FILTER AND DETENTION VAULT B' - B' CROSS SECTION VIEW
N.T.S.

UNDERGROUND SCM SYSTEM DRAWINGS TO BE PROVIDED BY MANUFACTURER PRIOR TO INSTALLATION (STRUCTURAL DESIGN BY OTHERS)

NOTE: THE ONSITE GEOTECHNICAL ENGINEER SHALL CERTIFY ALL COMPONENTS OF THE SAND FILTER.

MATERIAL	SPECIFICATIONS / TEST METHOD	SIZE	NOTES
SAND	CLEAN ASBESTO M-6 OR ASTM C-33 MEDIUM AGGREGATE SAND	0.02" TO 0.04"	SAND SUBSTITUTIONS SUCH AS DIABASE AND GRAYSTONE #10 ARE NOT ACCEPTABLE. NO CALCIUM CARBONATE OR ORGANIC SAND SUBSTITUTIONS ARE ACCEPTABLE. NO "ROCK DUST" CAN BE USED FOR SAND.
UNDERDRAIN GRAVEL (6" LAYER UNDER CHOKING STONE)	ASTM C-33	#57 STONE	
CHOKING STONE (2" LAYER BETWEEN SAND AND GRAVEL)	ASTM C-33	#8 STONE	
GEOTEXTILE FABRIC ABOVE SAND LAYER	ENKADRIN 3811R		ENKADRIN 3811R OR ENGINEER APPROVED EQUIVALENT TO BE INSTALLED PER MANUFACTURER'S SPECIFICATIONS
UNDERDRAIN PIPING	AASHTO M-252	6" ADS N-12 (DOUBLE WALL HDPE PIPE)	3/8" PERFORATIONS @ 6" ON CENTER, 4 HOLES PER ROW. MINIMUM OF 4" OF GRAVEL OVER PIPES, 1" TOTAL LAYER OF GRAVEL

SAND FILTER MATERIAL SPECIFICATIONS
N.T.S.



DETENTION VAULT CROSS SECTION
N.T.S.

SEE SHEET C0.01 FOR ALL PROJECT, SITE, GRADING, STORM DRAINAGE AND UTILITY NOTES

ALL CONSTRUCTION SHALL BE IN ACCORDANCE WITH THE CURRENT TOWN OF CHAPEL HILL ENGINEERING DESIGN AND CONSTRUCTION STANDARDS

PRELIMINARY DRAWING - NOT RELEASED FOR CONSTRUCTION

REVISIONS

NO.	DATE	REVISION DESCRIPTION
1	11.13.2020	REVISED PER 1ST CZP COMMENTS
2	12.18.2020	REVISED PER 2ND CZP COMMENTS

PLAN INFORMATION

PROJECT NO. TRG-20000
FILENAME TRG20000-SWB
CHECKED BY DCW
DRAWN BY LK
SCALE N.T.S.
DATE 12.21.2020

SHEET

STORMWATER CONTROL MEASURE 'B' DETAILS

C9.01B