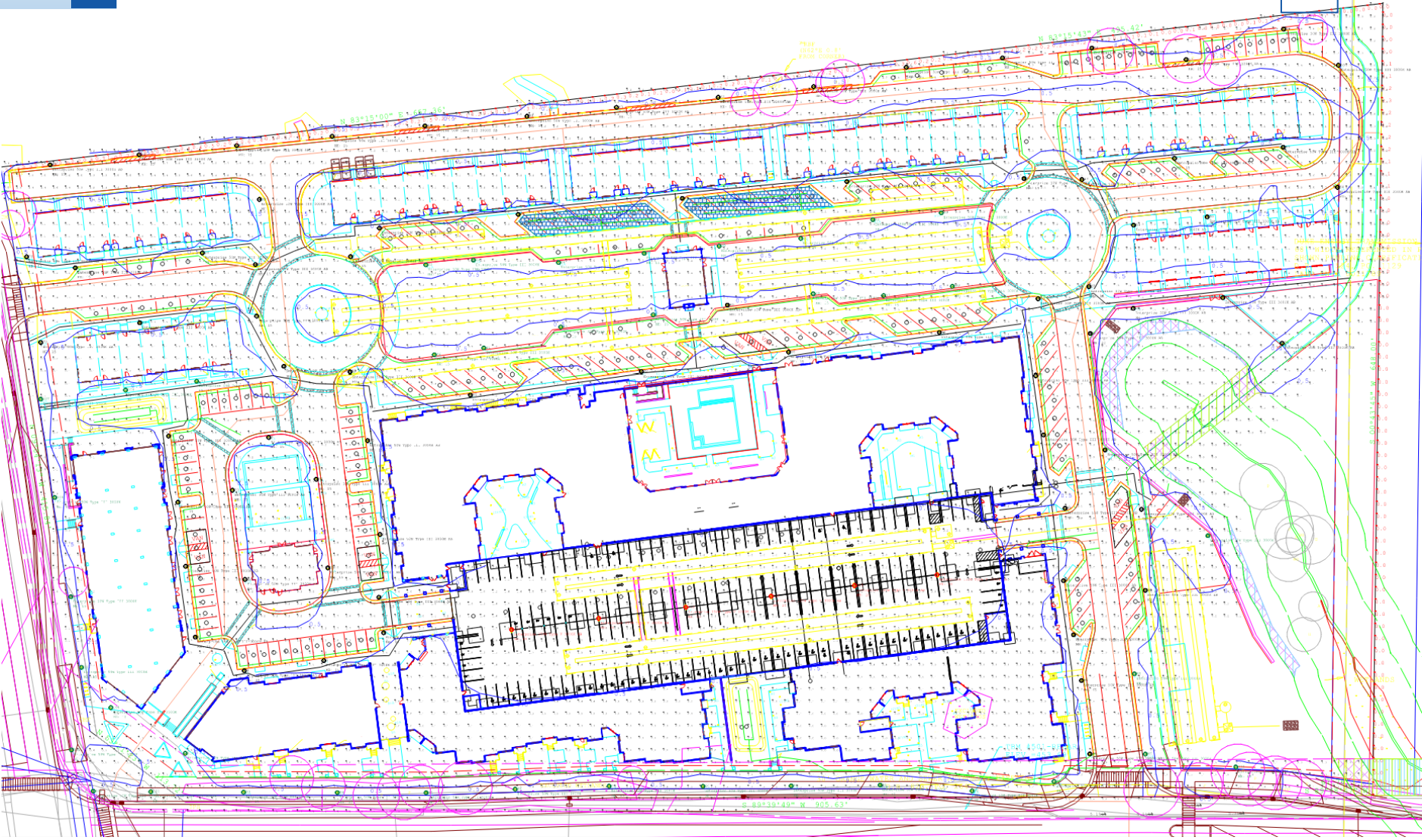


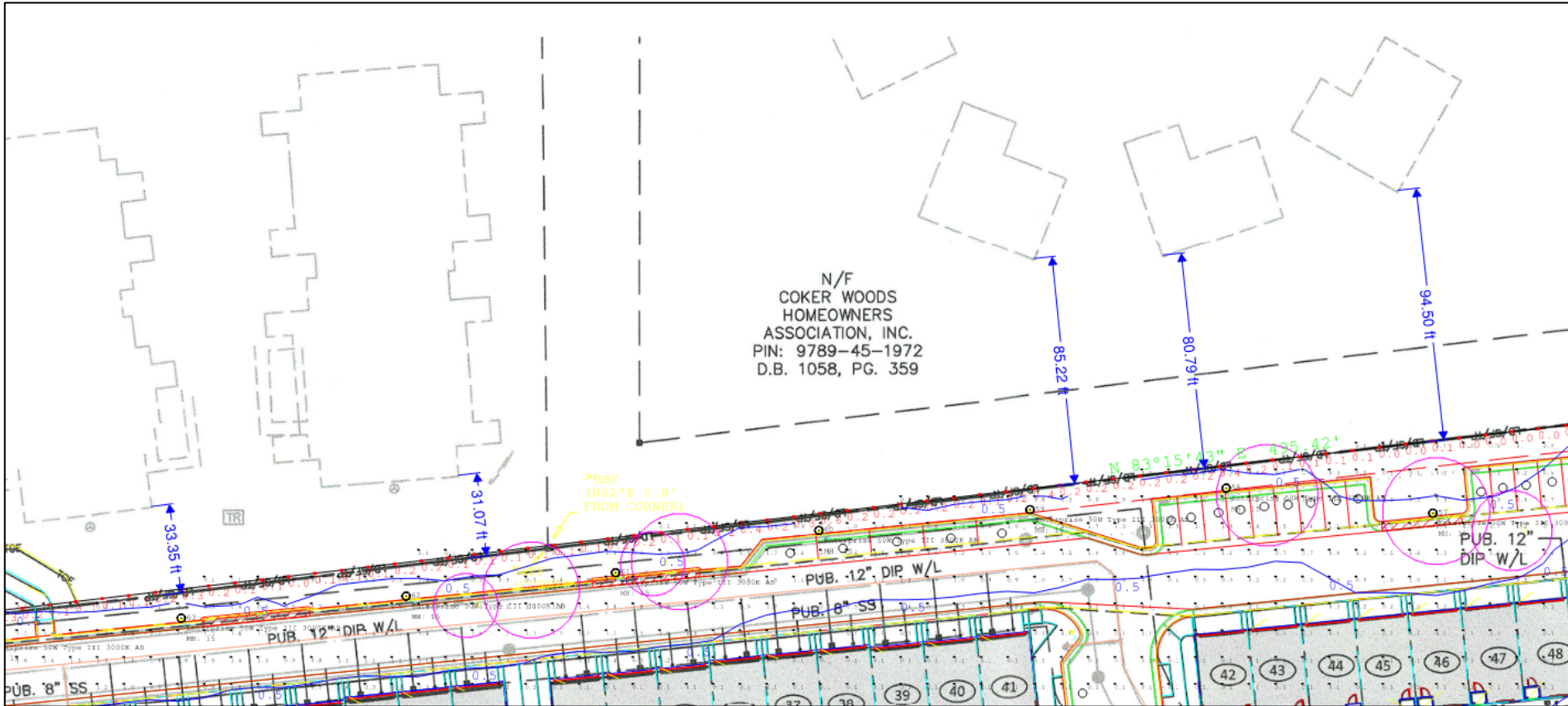
Aura Chapel Hill

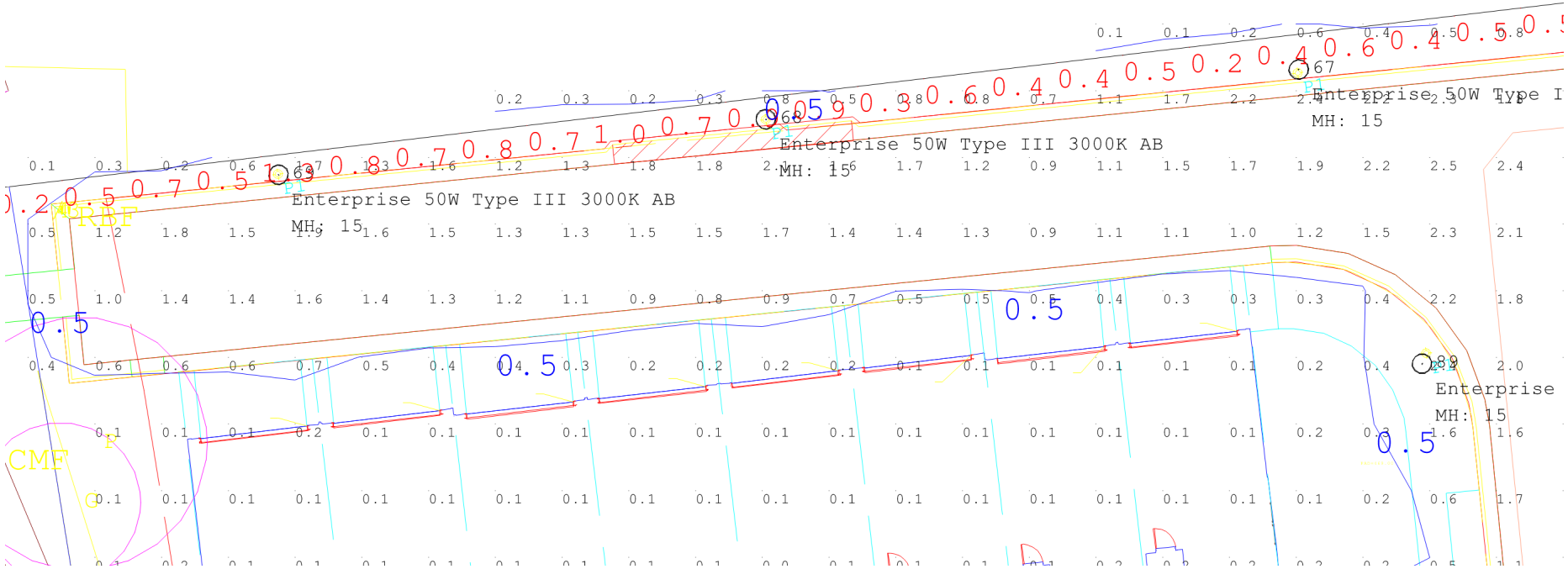
*Offsite Lighting Minor
Modification*

Site Location









Enhanced Photometric Plan – Area 2

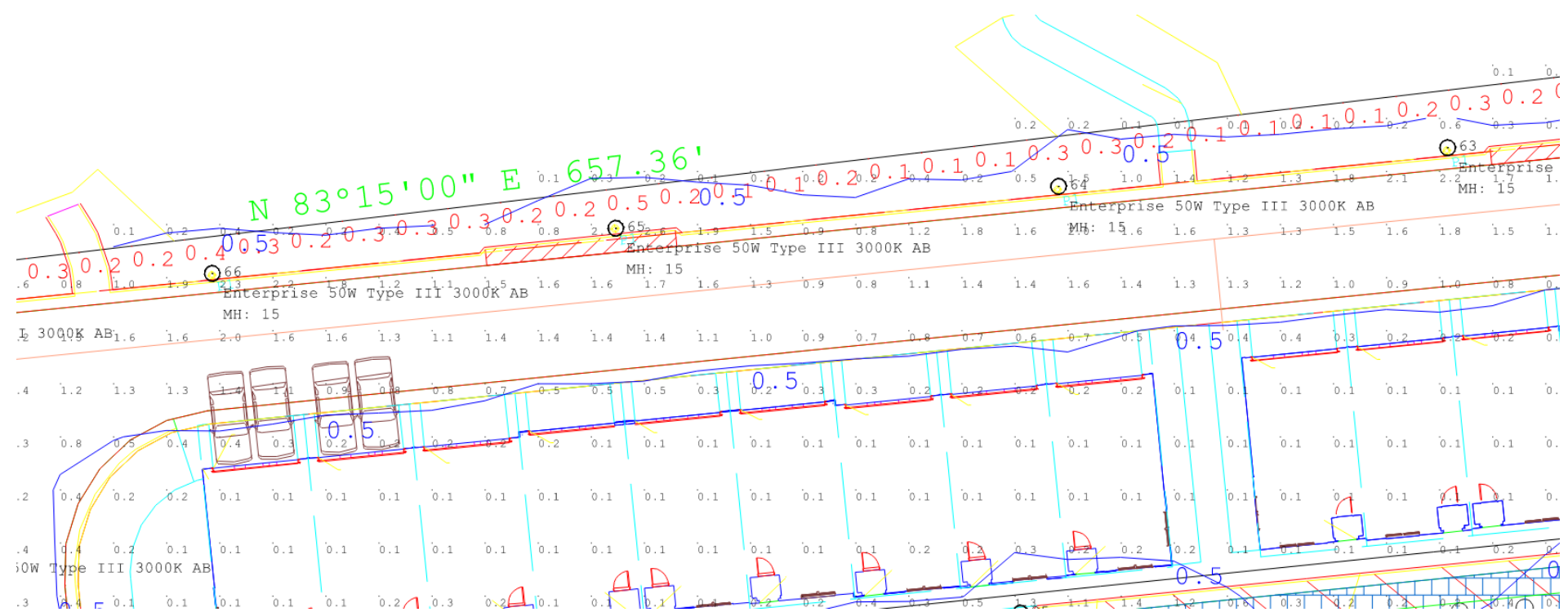


EXHIBIT A
Outdoor Lighting
ENTERPRISE LED



ENTERPRISE LED

LED
(Light-emitting diode) 150 / 220 watts

Mounting height 20' - 30'

Color
Black
Green (Special Conditions)
Bronze (Special Conditions)
Gray (Special Conditions)

Pole Style A

IESNA cutoff classification: Full-cutoff
Color temperature: 3,000K Primary
 4,000K Available

FIXTURE	WATTS	LUMENS	PATTERN	BUG RATING
Enterprise	150	15,091	III	B2-U0-G3
		15,595	IV	B3-U0-G3
		16,500	V	B4-U0-G2
Enterprise	220	21,502	III	B3-U0-G3
		22,219	IV	B3-U0-G4
		23,507	V	B5-U0-G3

LIGHT DISTRIBUTION PATTERNS





light distribution patterns

POLE AVAILABLE	MOUNTING HEIGHT	FOUNDATION
Style A	20', 25', 30'	Direct Bury, Anchor Base



For additional information, contact

EXHIBIT B

Outdoor Lighting

MICRO ROADWAY LED



MICRO ROADWAY LED

LED
(Light-emitting diode) 50 / 70 watts

Mounting height 20' – 30'

Color
Black
Green
Bronze
Gray

Pole
Wood
Style A

IESNA cutoff classification: Full-cutoff

Color temperature: 3,000K Primary
4,000K Available

FIXTURE	WATTS	LUMENS	PATTERN	BUG RATING
Micro	50	5,407	II	B1-U0-G1
		5,342	III	B1-U0-G1
		5,434	V	B3-U0-G1
Micro	70	7,820	II	B2-U0-G2
		7,782	III	B1-U0-G2

LIGHT DISTRIBUTION PATTERNS



light distribution patterns

POLE AVAILABLE	MOUNTING HEIGHT	FOUNDATION
Style A	20', 25', 30'	Direct Bury, Anchor Base
Wood	25', 30'	Direct Bury

For additional information, contact

