



2627 Mercham Road
Chapel Hill, NC 27516

RADWAY

DESIGN

ASSOCIATES, P.A.

City Planning and Land
Development Consultants

PREPARED BY:

The Nau Company
Consulting Civil Engineers

PO Box 810 | Rolesville, NC 27571
919-435-6395
NCBELS License P-0751

CLIENT:

SUMMIT HOSPITALITY, LLC
3141 JOHN HUMPHRIES WYND #200
RALEIGH, NC 27612

REVISIONS	
NO.	REVISIONS FOR USE
1	2018-05-21
2	2018-07-24

101-111 ERWIN ROAD MIXED USE

CHAPEL HILL, NC

OVERALL SITE LAYOUT PLAN - CONCEPT B

PROJECT NO: _____

DESIGN BY: JPE

DRAWN BY: JPE

SCALE: 1"=60'

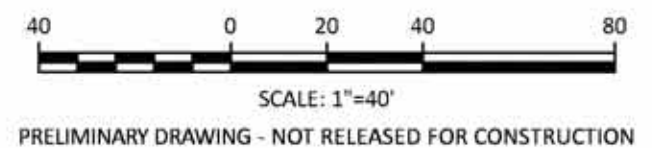
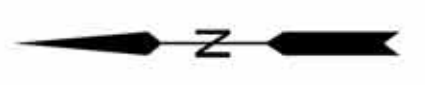
DATE: 2018-04-25

SHEET NO: **C2.0**

60 0 30 60 120

SCALE: 1"=60'

PRELIMINARY DRAWING - NOT RELEASED FOR CONSTRUCTION



PRELIMINARY DRAWING - NOT RELEASED FOR CONSTRUCTION

RADWAY
2627 Mercham Road
Chapel Hill, NC 27516



City Planning and Land
Development Consultants

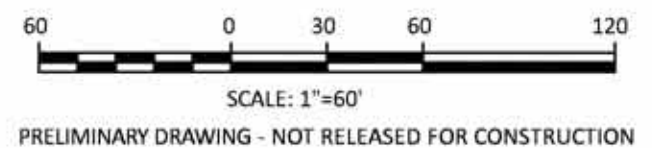
PREPARED BY:
The Nau Company
Consulting Civil Engineers
PO Box 810 | Rolesville, NC 27571
919-435-5395
NCBELS License P-0751

CLIENT:
SUMMIT HOSPITALITY, LLC
3141 JOHN HUMPHRIES WYND #200
RALEIGH, NC 27612

REVISIONS	
NO.	REVISIONS FOR USE
1	2018-05-23 LAYOUT REVISIONS
2	2018-07-24 LAYOUT REVISIONS

101-111 ERWIN ROAD MIXED USE
CHAPEL HILL, NC
SITE LAYOUT PLAN - CONCEPT B

PROJECT NO.:
DESIGN BY: JPE
DRAWN BY: JPE
SCALE: 1"=40'
DATE: 2018-04-25
SHEET NO: **C2.1**



PRELIMINARY DRAWING - NOT RELEASED FOR CONSTRUCTION

RADWAY
 2627 Merchaum Road
 Chapel Hill, NC 27516

DESIGN ASSOCIATES, P.A.
 City Planning and Land
 Development Consultants

PREPARED BY:
The Nau Company
 Consulting Civil Engineers
 PO Box 810 | Rolesville, NC 27571
 919-435-5395
 NCBELS License P-0751

CLIENT:
 SUMMIT HOSPITALITY, LLC
 3141 JOHN HUMPHRIES WYND #200
 RALEIGH, NC 27612

REVISIONS	
NO.	REVISIONS FOR USE
1	2018-05-21
2	2018-07-24

101-111 ERWIN ROAD MIXED USE

CHAPEL HILL, NC

OVERALL SITE LAYOUT PLAN

PROJECT NO: _____

DESIGN BY: JPE

DRAWN BY: JPE

SCALE: 1"=60'

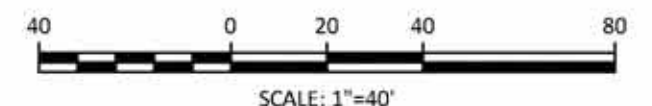
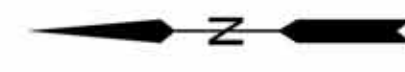
DATE: 2018-04-25

SHEET NO: **C3.0**



McGREGOR DRIVE

ERWIN ROAD



SCALE: 1"=40'
PRELIMINARY DRAWING - NOT RELEASED FOR CONSTRUCTION

2627 Merchaum Road
Chapel Hill, NC 27516

RADWAY

DESIGN
ASSOCIATES, P.A.

City Planning and Land
Development Consultants

PREPARED BY:
The Nau Company
Consulting Civil Engineers
PO Box 810 | Rolesville, NC 27571
919-435-6395
NCBELTS License P-0751

CLIENT:
SUMMIT HOSPITALITY, LLC
3141 JOHN HUMPHRIES WYND #200
RALEIGH, NC 27612

REVISIONS	
NO.	REVISIONS FOR USE
1	2018-05-21
2	2018-07-24

101-111 ERWIN ROAD MIXED USE
CHAPEL HILL, NC
SITE LAYOUT PLAN

PROJECT NO: ---
DESIGN BY: JPE
DRAWN BY: JPE
SCALE: 1"=40'
DATE: 2018-04-25
SHEET NO: **C3.1**