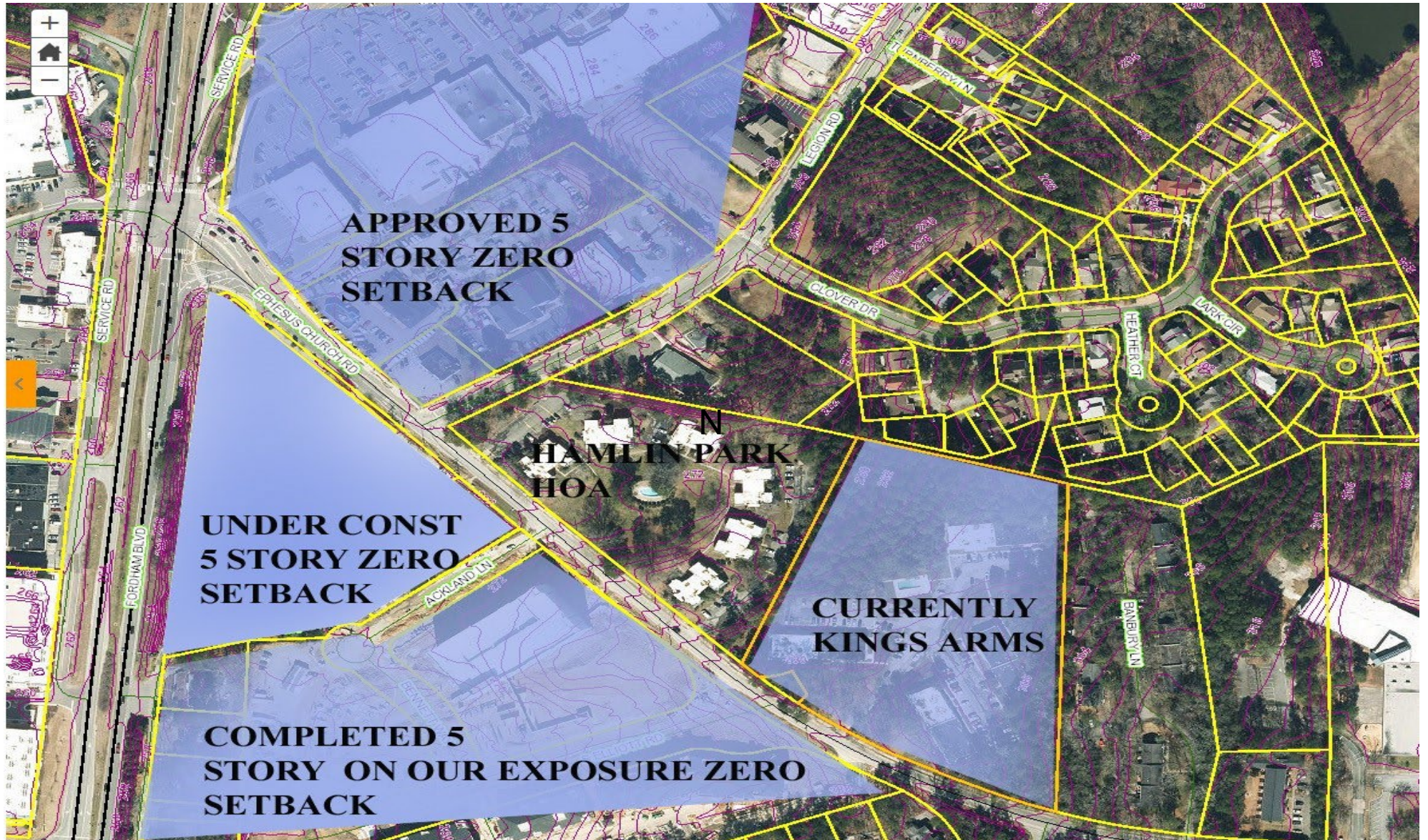


Boxed in?



Grade of the land

The next slide shows how the Reserve site entirely drains to Hamlin Park due to the geography of the land. Water entering Hamlin Park collects at the rear and travels down the middle, exiting at the front. In heavy rains, most drainage occurs on the surface washing out the lawn.

The entire 45 acre watershed including the pond on Legion Rd drains through Hamlin Park. With recent clearing and construction, flooding is common.

Elevation: White>304' / Red>296' / Rust>290' / Mustard>284' / Green>278' / Blue>272'

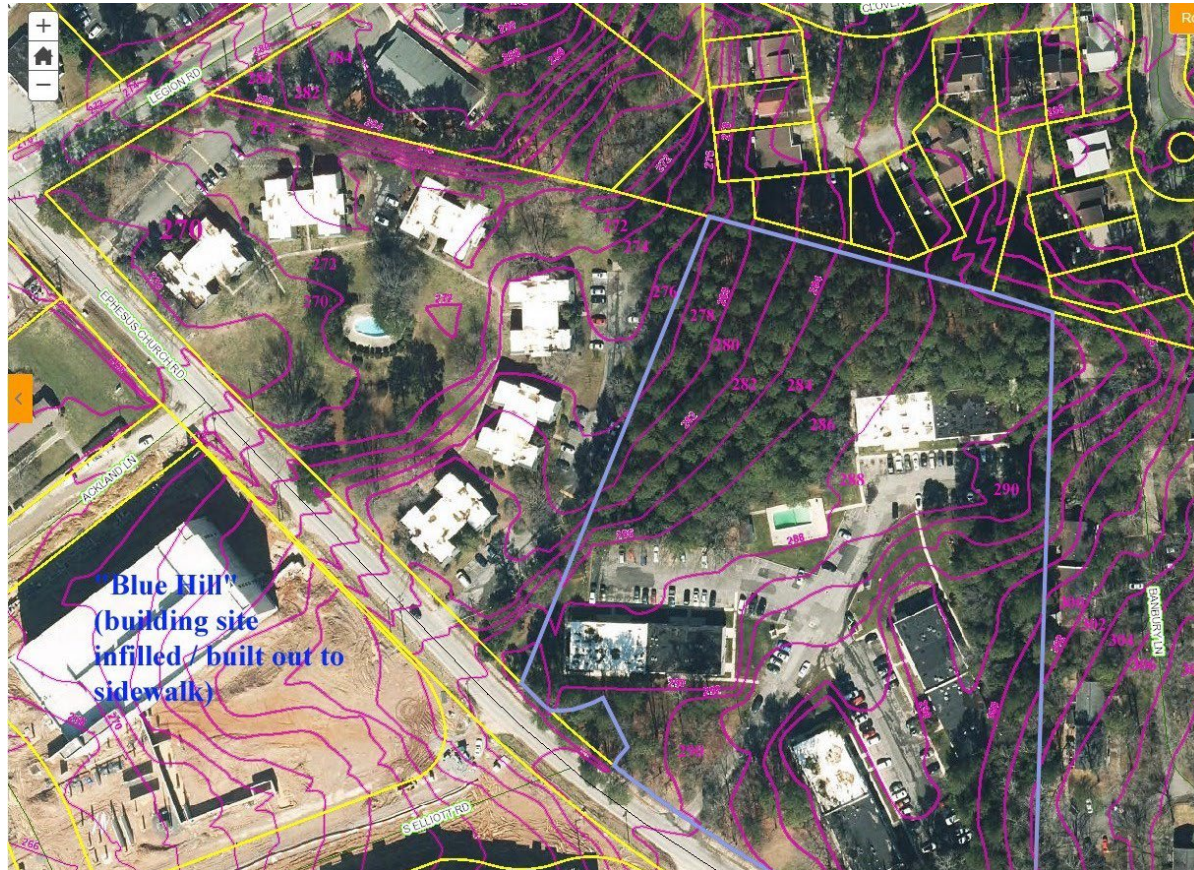


Natural water absorption

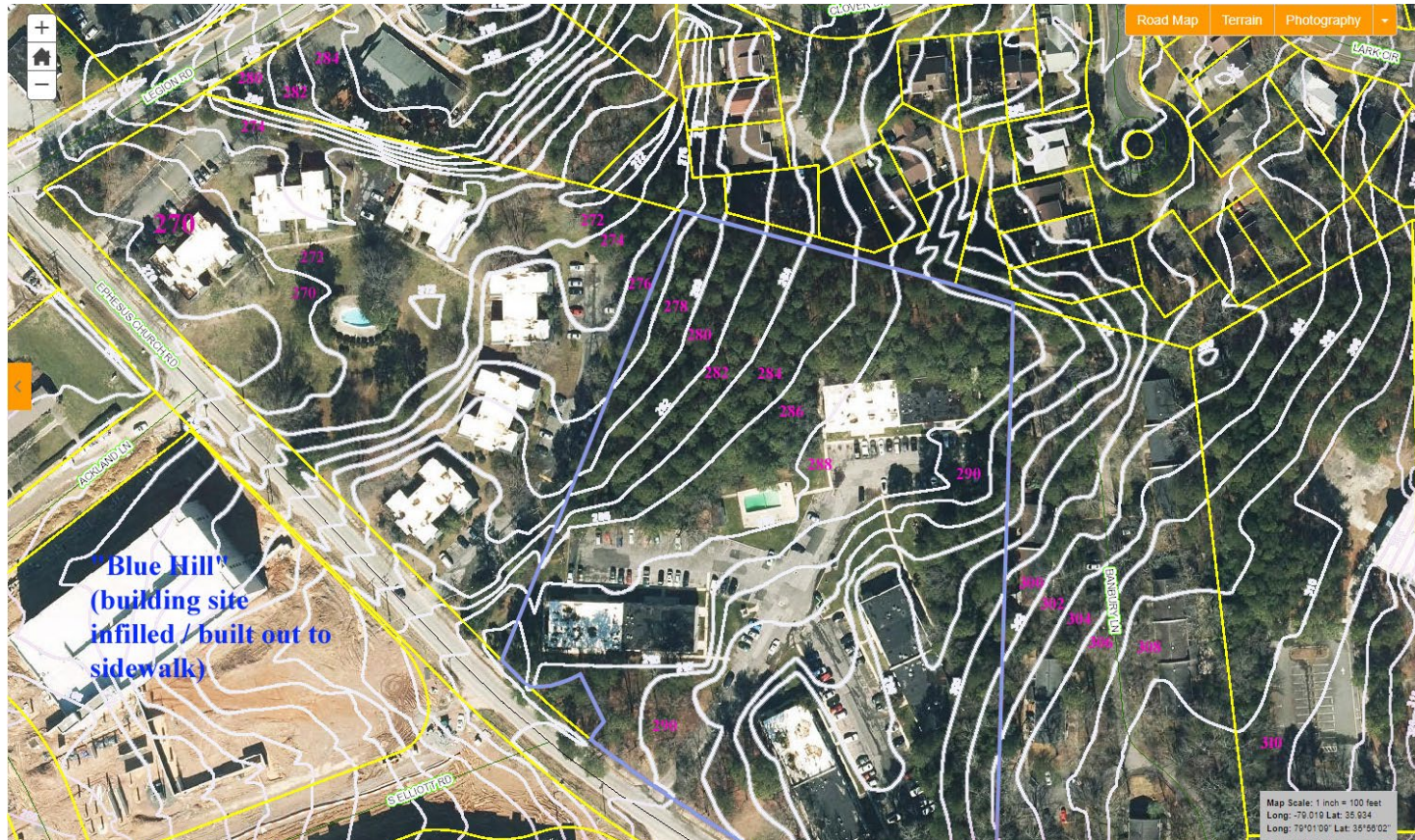
The next slide shows the current natural FORESTATION on the Reserve site east of Hamlin Pk, which provides significant protection.

Water runs downhill from elevation 290' to elevation 272', but usually does not overwhelm our eastern parking areas, since the woods ability to absorb run off along this drop is significant. Water that reaches Hamlin Park, often stays there due to lack of grade.

Shows current forest on site



Shows elevations and vulnerable buildings



Only Drainage system on our property, runs from the very rear corner to Ephesus Church Rd. Referenced in the concept plan for The Reserve as their means for drainage (item 5.4)



Direction / Location of the Drainage



Sink Hole from drainage issues



Sink Hole (one of several)



This is an area water collects during heavy rains (sink holes by arrows)

