



Greene Tract

Environmental Assessment and Memorandum of Understanding

DRAFT

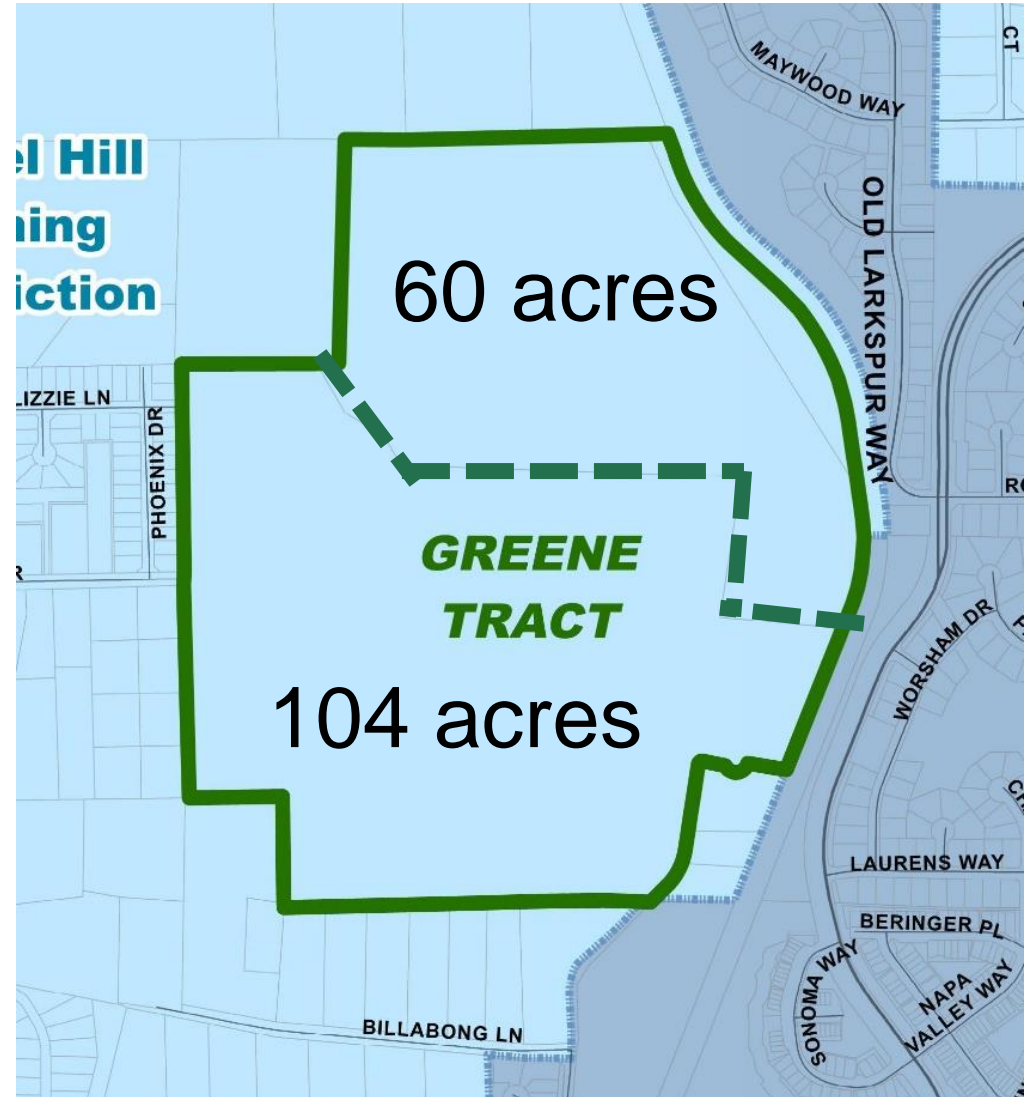
History

1972	Landfill opens on Eubanks Road
1984	Greene Tract purchased
2000	Water lines installed
2002	Greene Tract Resolution adopted
2008	Chapel Hill Transit extended route to Rogers Road
2012-13	Historic Rogers Road Neighborhood Task Force created
2013	Landfill officially closes
2014	Community Center opens
2016	<i>Mapping our Community's Future</i> report published
2017	Rogers Road sewer work begins

DRAFT

Ownership

60 acres County-owned
+ 104 acres jointly-owned
= 164 acres total



Environmental Assessment

Elements

1. Analysis on Existing Environmental Conditions

- Geology and Geography
- Land Use
- Soils
- Streams, Wetlands, and Water Resources
- Aquatic Wildlife Communities
- Terrestrial Vegetation Communities
- Wildlife and Protected Species
- Public Lands and Open Space
- Cultural and Historical Resources

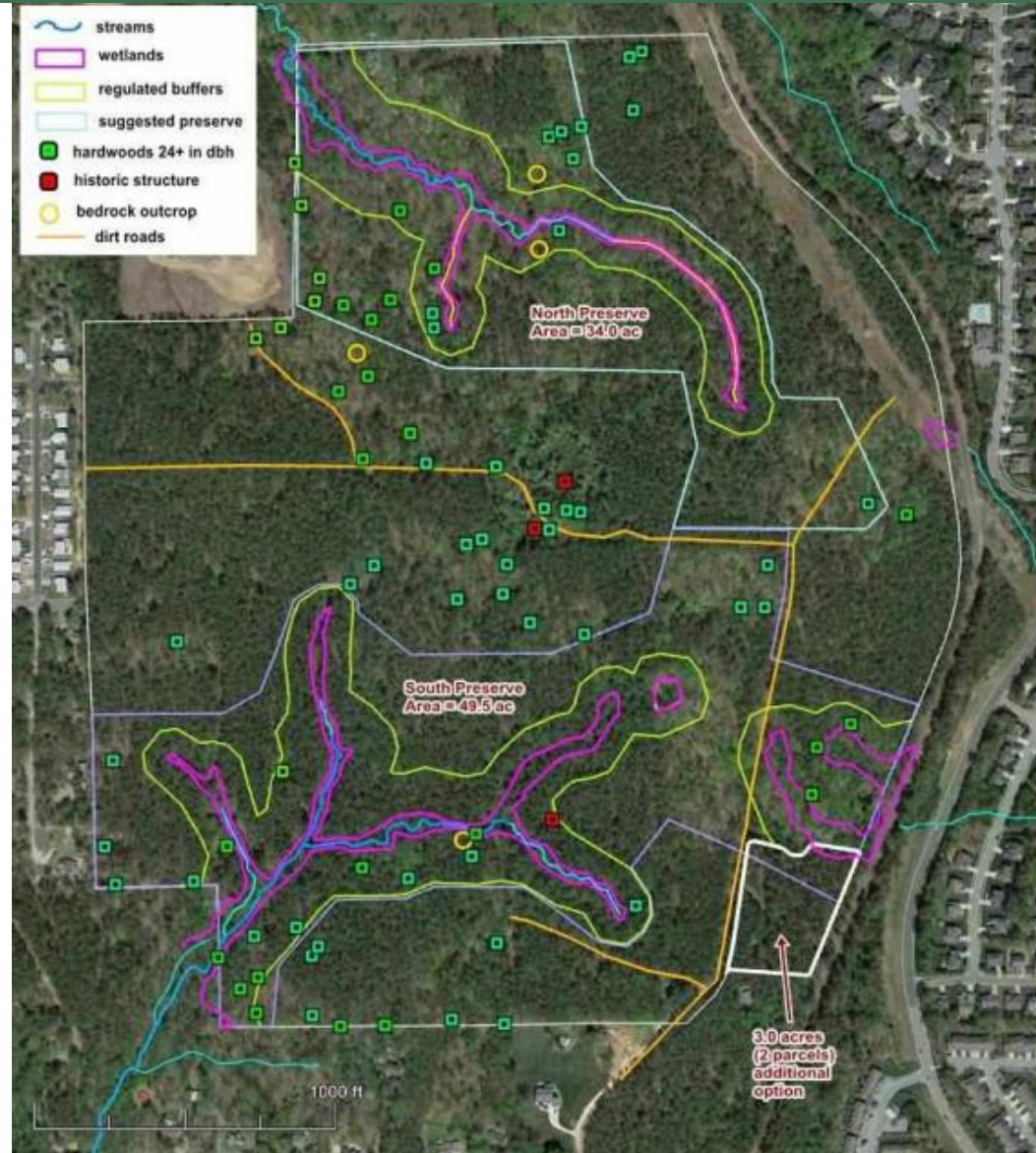
2. Suitability Analysis for Development

- Summarizes the four preservation and development alternatives

3. Land Use Alternatives

DRAFT

Environmental Assessment



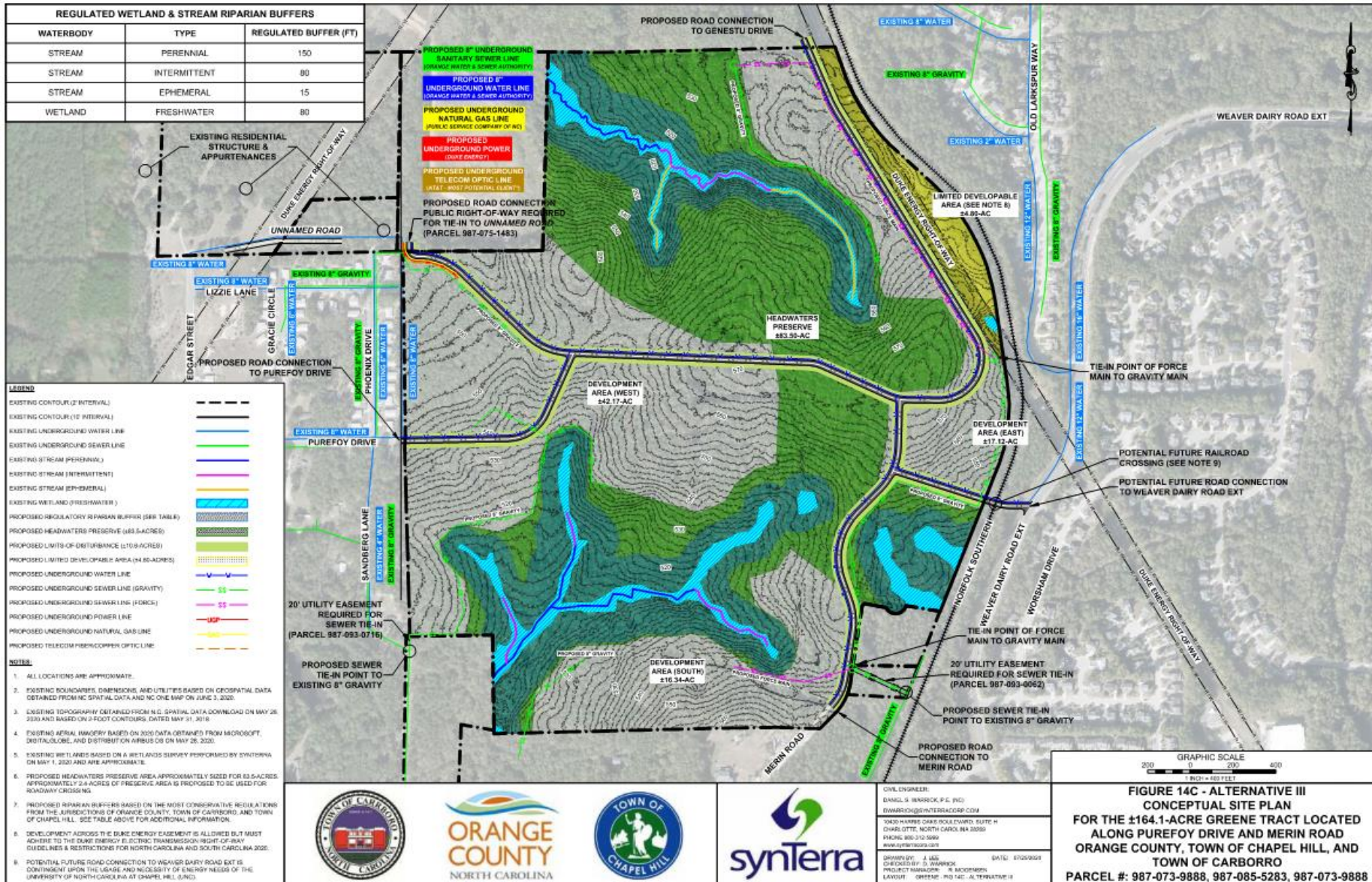
DRAFT

Conceptual Site Plan – Alternative 2



DRAFT

Conceptual Site Plan – Alternative 3



DRAFT

Conceptual Site Plan – Alternative 4



DRAFT

Memorandum of Understanding

1. Term and Termination
2. Responsibilities of the Parties
3. Public Participation and Decision-Making
 - Public Engagement
 - Affordable and Mixed Income Housing and other uses
 - School Site with Public Recreation
 - Joint Preserve
 - Connectivity
 - Recombination
 - Development Agreement
4. Final Determination
5. Disputes
6. Division or Sale
7. Notice

DRAFT

Next Steps

1. Consideration of MOU - April 7 meeting
2. Develop Public Engagement Plan
3. Recombination of Headwaters Preserve

DRAFT