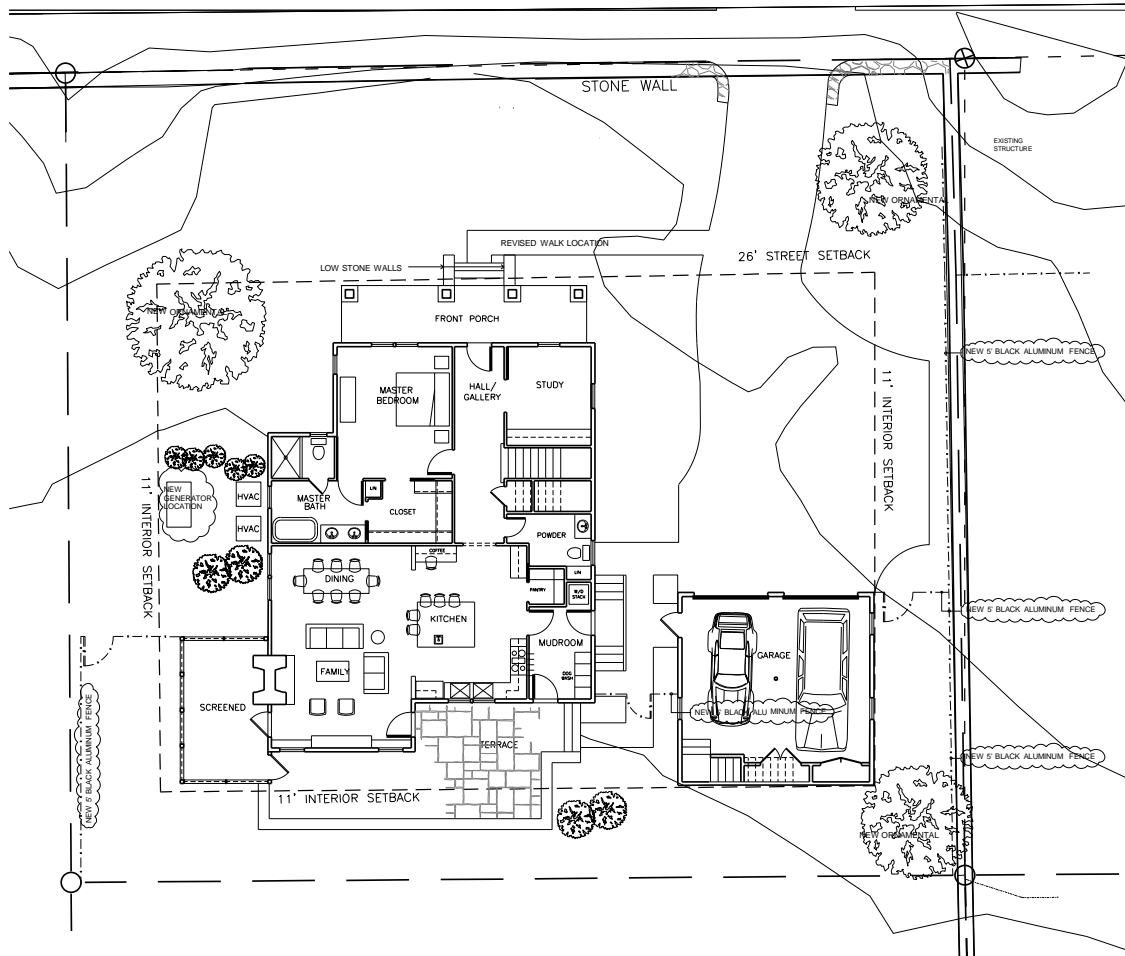


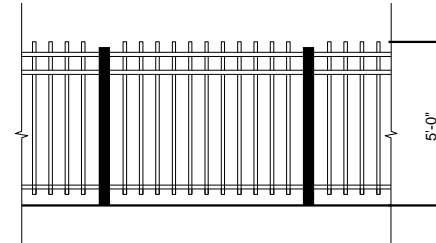
514 East Rosemary Street COA Application

Proposed Open Aluminum Fence & Home Backup Generator

E. ROSEMARY STREET



RAYNOR RESIDENCE 514 EAST ROSEMARY STREET ADDITIONAL FENCING AND GENERATOR LOCATION



2 FENCE DETAIL
SD2 SCALE: 12" = 1'-0"



1 PROPOSED SITE PLAN
SD2 SCALE: 18" = 1'-0"



Proposed Open Aluminum Fence & Generator – site photos (E. Rosemary St view)



Proposed Open Aluminum Fence & Generator – West Side Yard



Proposed Open Aluminum Fence & Generator – Rear Yard



Proposed Open Aluminum Fence & Generator – East Side Yard



Proposed Open Aluminum Fence & Generator – East Side Yard



Proposed Open Aluminum Fence & Generator – East Side Yard



Proposed Open Aluminum Fence & Generator – East Side Yard



Proposed Open Aluminum Fence & Generator – Space Between Garage/House



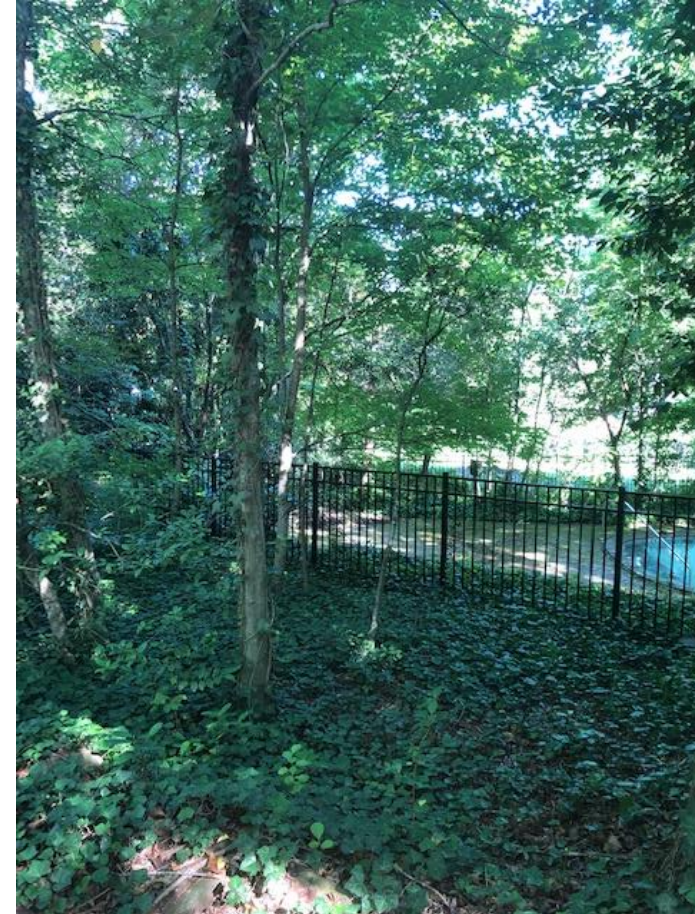
Examples of Open Aluminum Fences in the Franklin/Rosemary Historic District

506 East Rosemary Street



Examples of Open Aluminum Fences in the Franklin/Rosemary Historic District

503 East Franklin Street



Examples of Open Aluminum Fences in the Franklin/Rosemary Historic District

President's Residence – 400 East Franklin Street



Examples of Open Aluminum Fences in the Franklin/Rosemary Historic District

President's Residence – 400 East Franklin Street (along Raleigh Street)



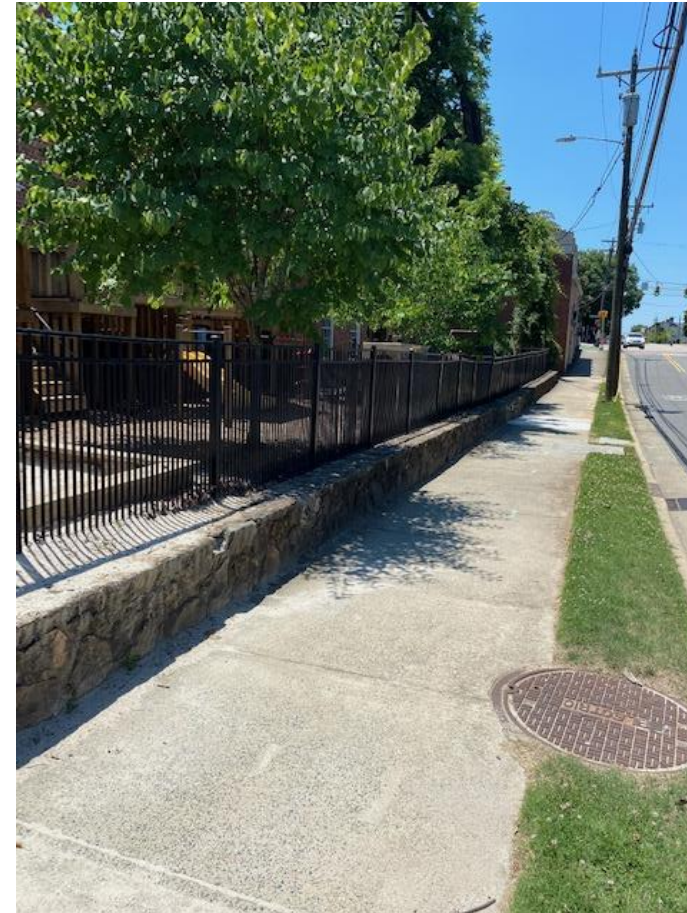
Examples of Open Aluminum Fences in the Franklin/Rosemary Historic District

213 East Franklin Street



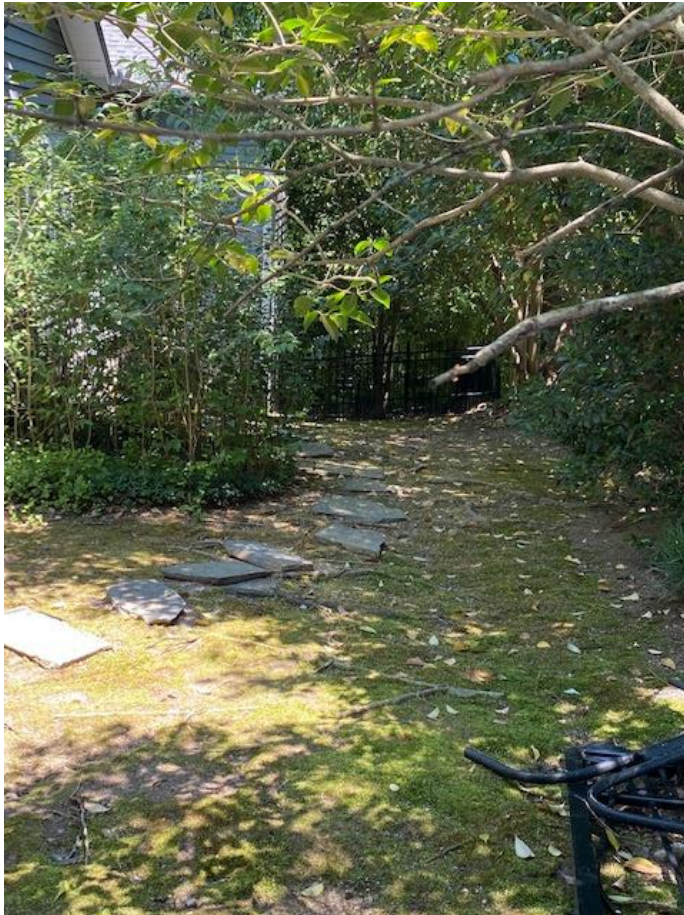
Examples of Open Aluminum Fences in the Franklin/Rosemary Historic District

University Presbyterian Church – 208 East Rosemary Street



Examples of Open Aluminum Fences in the Franklin/Rosemary Historic District

206 Cottage Lane



Examples of Open Aluminum Fences in the Franklin/Rosemary Historic District

721 East Franklin Street



Examples of Open Aluminum Fences in the Franklin/Rosemary Historic District

516 East Franklin Street



Examples of Metal Fences in the Franklin/Rosemary Historic District (front yard)

520 Hooper Lane



Generac 16KW Home Backup Generator

Proposed Generator Location



View From East Rosemary Street



Generac 16KW Home Backup Generator

Installation requirements:

The location should meet these Guidelines:

- Stable, well-drained area that will not flood
- Room around the generator for the technician and maintenance personnel.

Suggested Clearances to keep in mind:

- 18 inches (1.5 feet) from the house
- 60 inches (5 feet) from doors, windows, and fresh air intakes
- 36 inches (3 feet) in front of the generator for servicing room



Generac 16KW Home Backup Generator

Key Specifications

- Will run monthly for 5 minutes (exercise mode)

Sound output:

- Normal load – 65 decibels (23 feet)
- Exercise mode – 55 decibels (23 feet)

60 decibels is normal conversation/laughter

70 decibels is a vacuum cleaner/washing machine

These decibel levels do not include the plantings/screenings such as evergreen shrubs we have proposed

