



TRANSPORTATION AND CONNECTIVITY ADVISORY BOARD

CONDITIONAL REZONING
4.26.2022

742 Gimghoul Road Conditional Rezoning

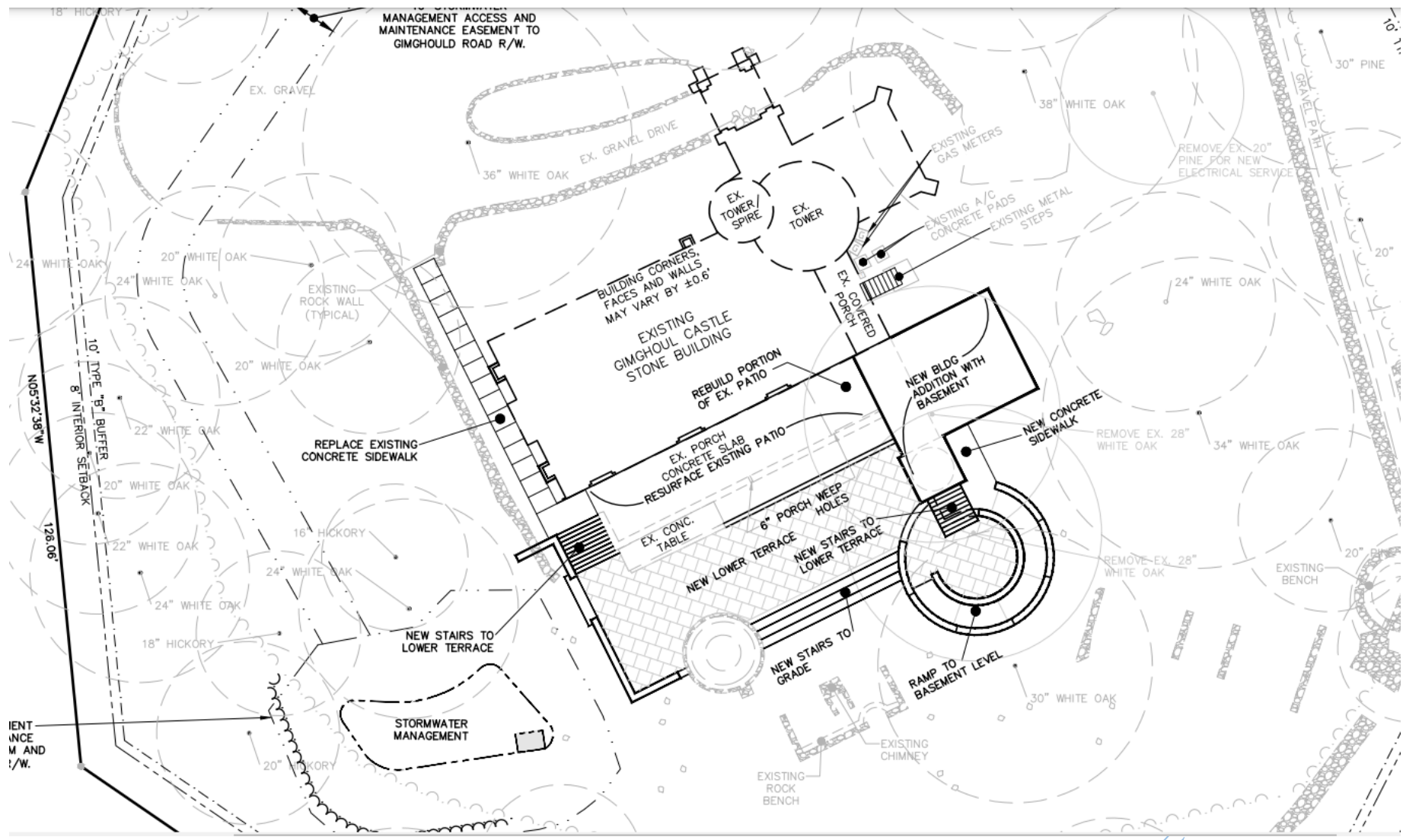
742 Gimghoul Road, Chapel Hill, NC





PROJECT SUMMARY

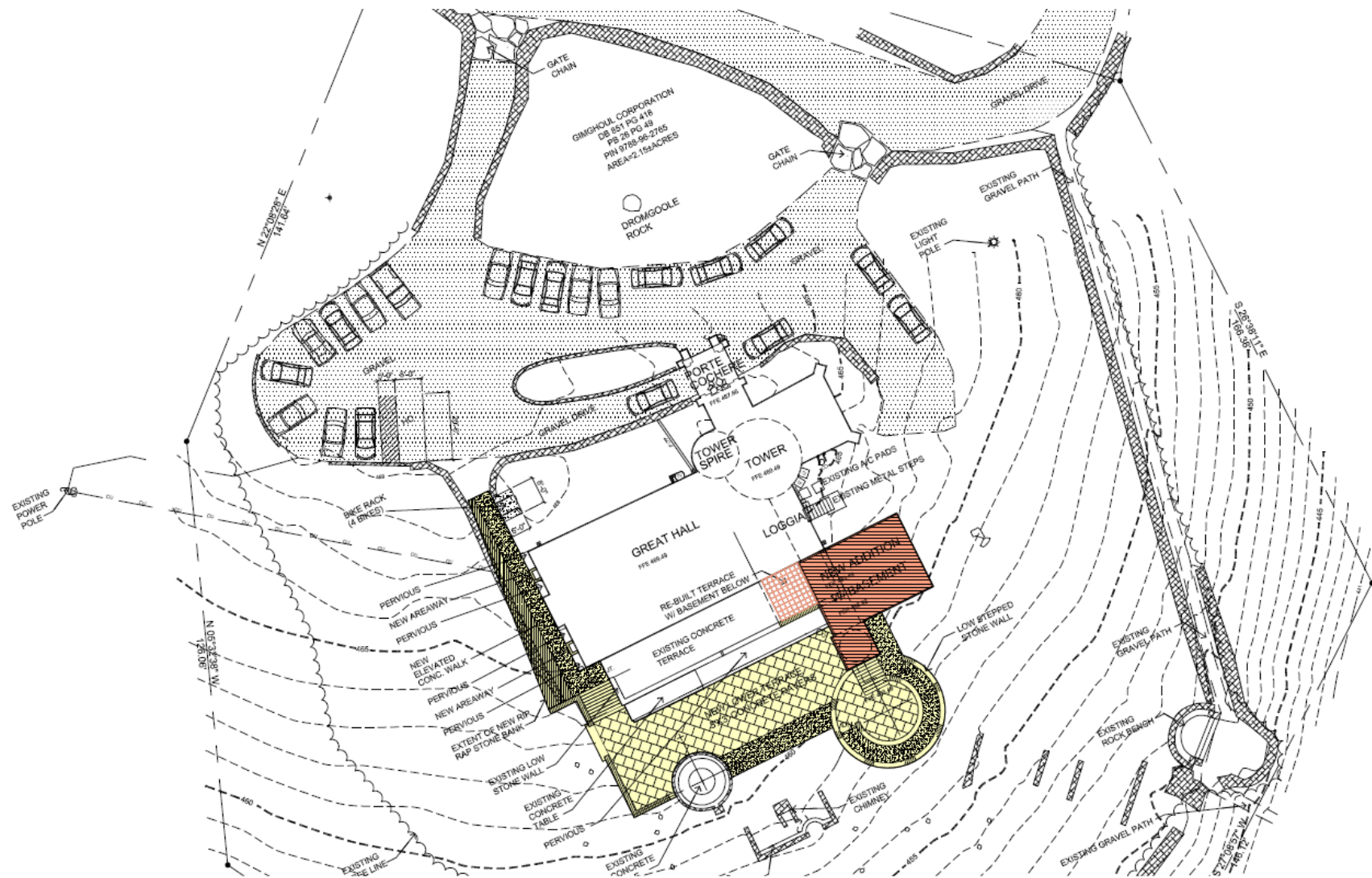
- ❑ Social club with historic building
- ❑ 1,200 sq. ft. addition proposed to existing building
- ❑ *Proposed rezoning from R-1 to OI-1*





KEY POINTS - *Parking & Access*

- ❑ 20 vehicle parking spaces
- ❑ 4 bicycle parking spaces to be added
- ❑ TIA exemption
- ❑ No Mobility Plan facilities on Gimghoul property





RECOMMENDATION

- ❑ Recommend approval or denial of Ordinance A

