

CARRAWAY VILLAGE

**EUBANKS ROAD
CHAPEL HILL, NORTH CAROLINA**

OVERALL SITE PLAN

JANUARY,
2019

P
01



Carraway Village Block G As-built Survey 4-9-2019

RCD Buffer - Grey Shaded Area

Buildable Area +/- 1.5 acres

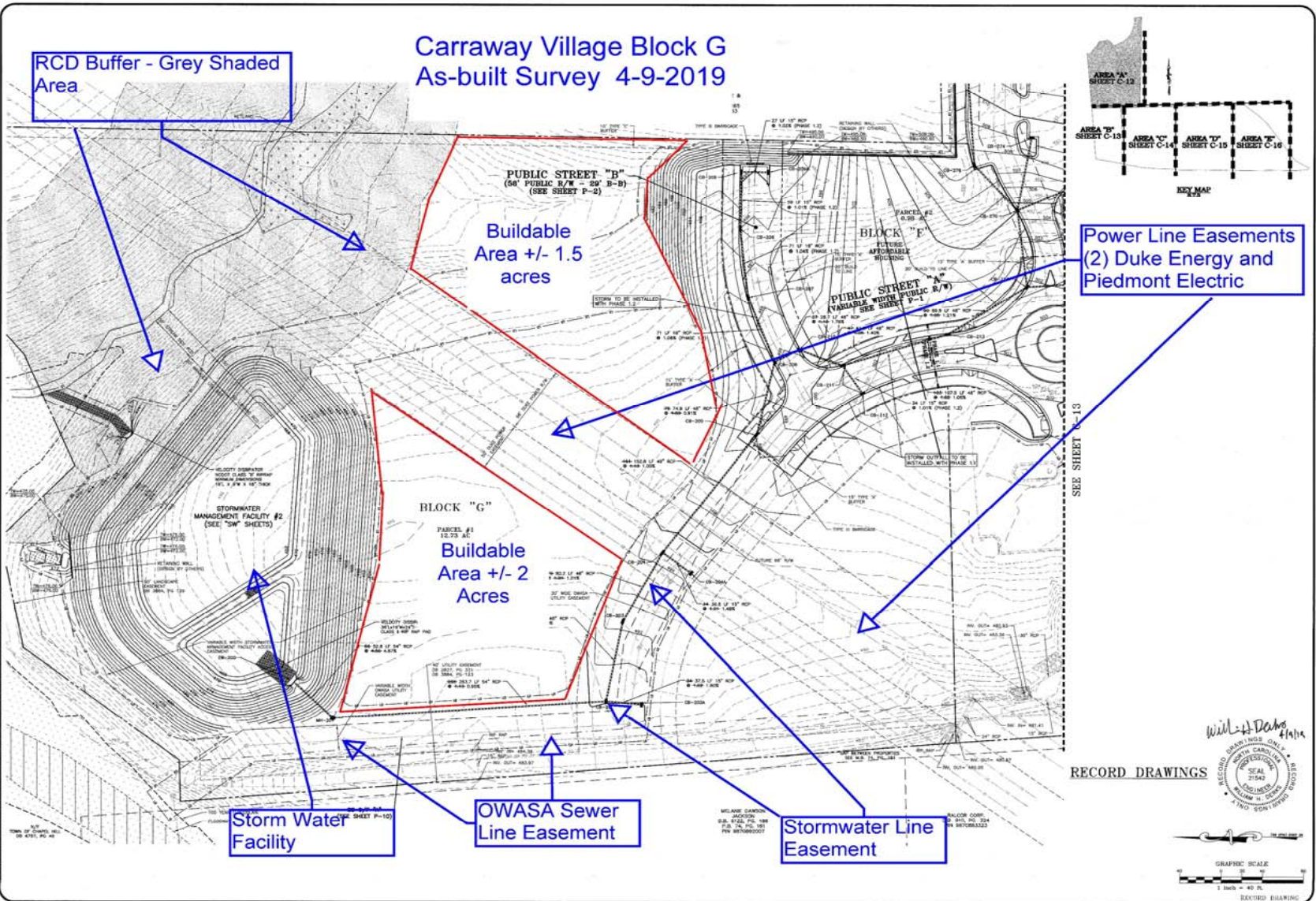
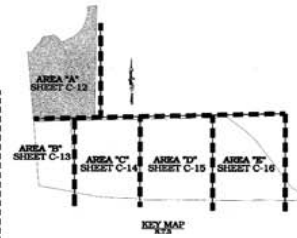
Block "G"
Buildable Area +/- 2 Acres

Power Line Easements
(2) Duke Energy and Piedmont Electric

Storm Water Facility

OWASA Sewer Line Easement

Stormwater Line Easement



RECORD DRAWINGS



THE JOHN R. MCADAMS COMPANY, INC.
Durham, North Carolina 27713
(919) 286-4400
(800) 333-8664
www.mcadams.com



MCADAMS

REVISIONS:

DEVELOPER:
NR EDGE PROPERTY OWNER, LLC
3816 CARRINGTON MILL
WOMENSVILLE, NORTH CAROLINA 27680
(919) 354-3660

CARRAWAY VILLAGE
PHASE 1.1
RECORD DRAWINGS
CHAPEL HILL, NORTH CAROLINA
GRADING & STORM DRAINAGE PLAN - AREA "A"

SHEET NO. 849-155(1)
PROJECT: 849155(1-0)
DRAWN BY: JSM
CHECKED BY: CHS
DATE: 04-09-2019
SCALE: C-12

MCADAMS

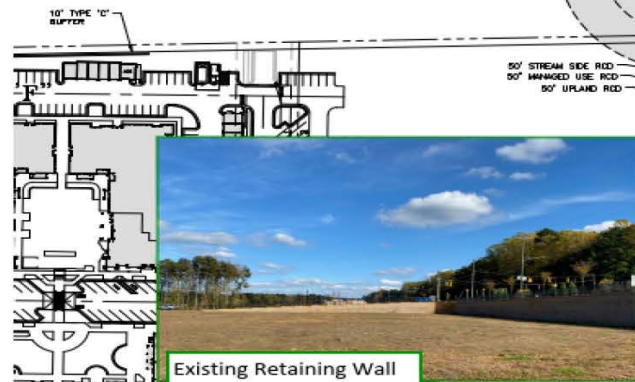
Carraway Village Block G



Example of Storage Building



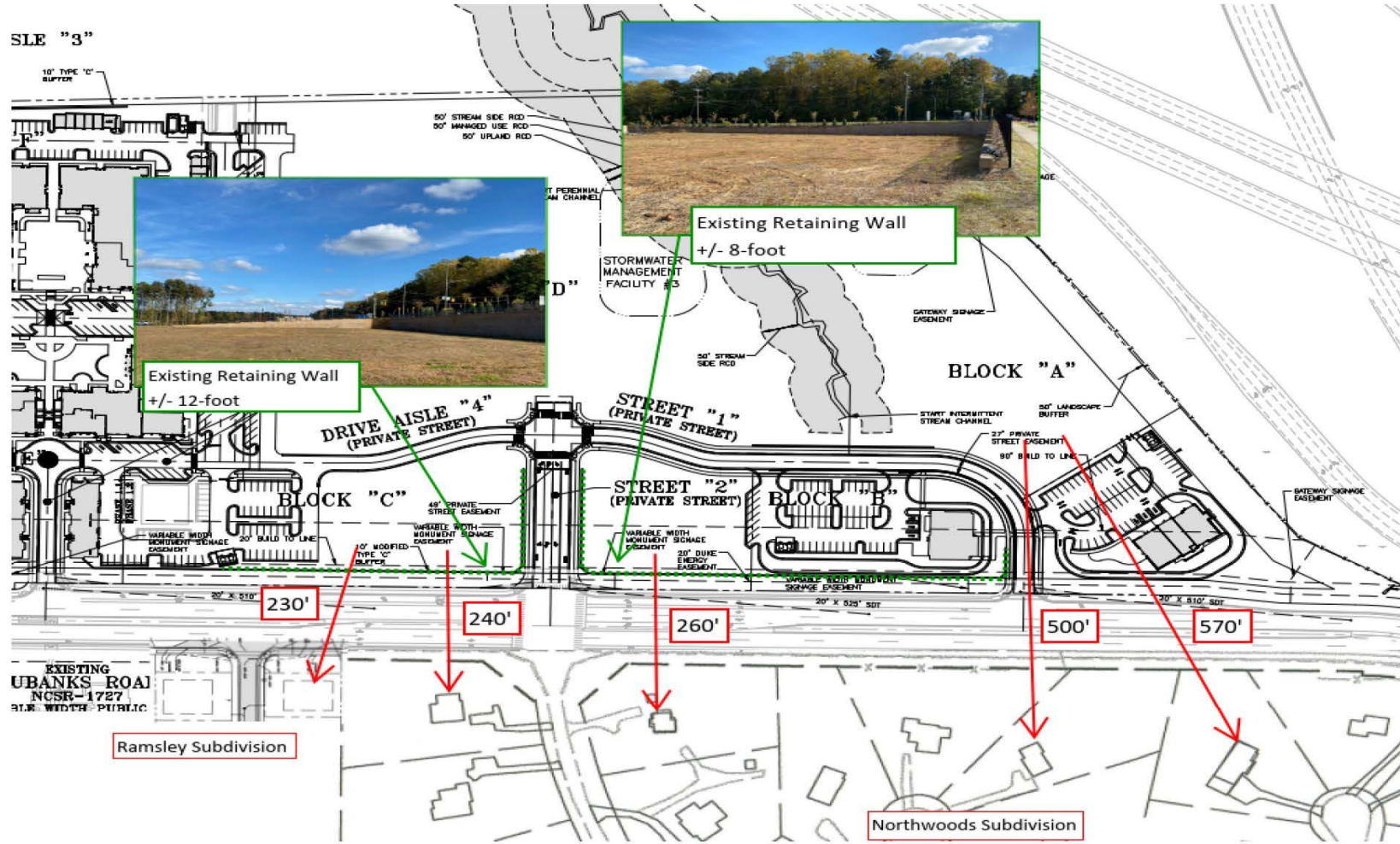
SLE "3"



Existing Retaining Wall +/- 12-foot



Existing Retaining Wall +/- 8-foot



EXISTING UBANKS ROAD NCSR-1727 31.5' WIDTH PUBLIC

Ramsley Subdivision

Northwoods Subdivision



Limited Scope SUP Modification Request

- Confirm climate controlled self-storage is permitted on Block G. Self storage was planned on Block G since inception due to lack of visibility and power lines on this side of the project, but in 2015 when the SUP was approved, self-storage was not a defined use in the LUMO.
- Gasoline sales are currently allowed as an accessory use on all blocks of the project, this request is to allow gasoline sales as a stand-alone use limited only to Block's A, B or C.
- Existing gateway signs have 5 tenant panels, this request is to allow additional tenant panels to help attract new tenants (note: the maximum sign area remains unchanged).
- Adjust the SF thresholds in the SUP that trigger the approved modifications to ground and building signs, from 25,000 sf currently, to 20,000 sf.
- Remove condition to extend Public Street A beyond its current termination point.



