



Montessori Community School Expansion

Special Use Permit Modification

**Business Meeting
January 17, 2018**

DRAFT

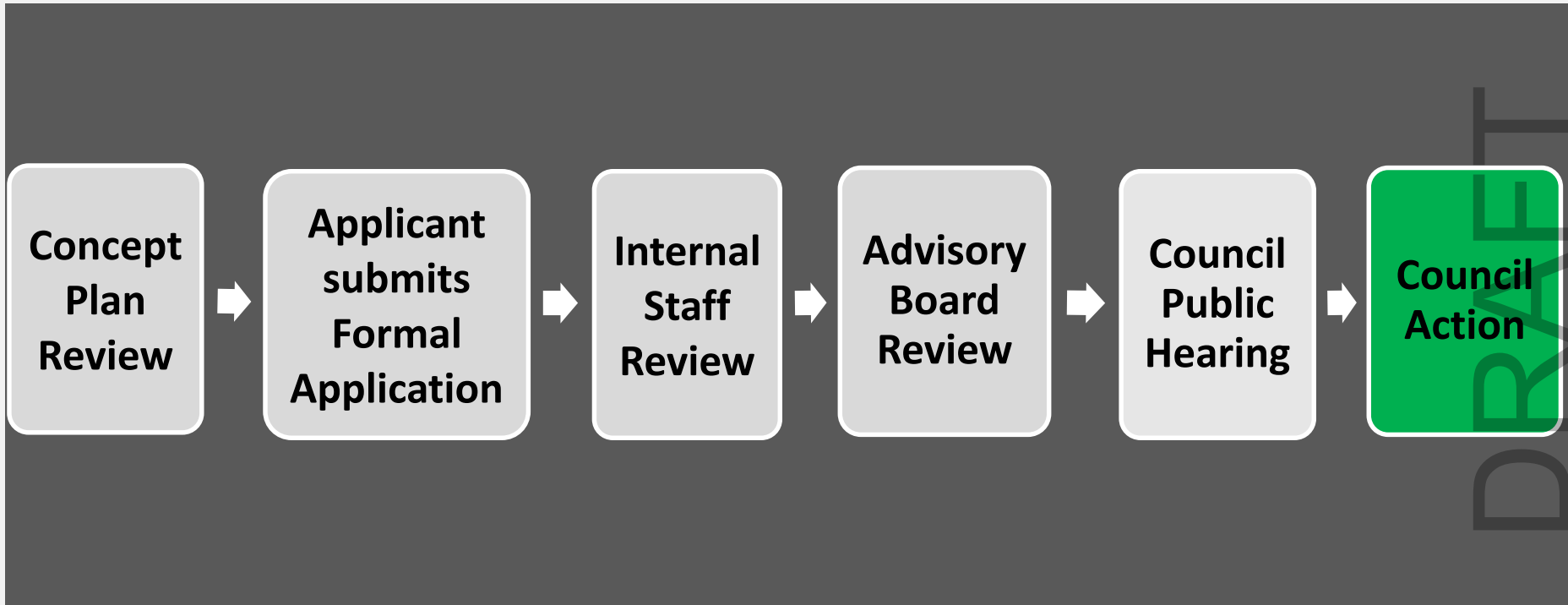
Recommendation - Montessori

That the Council:

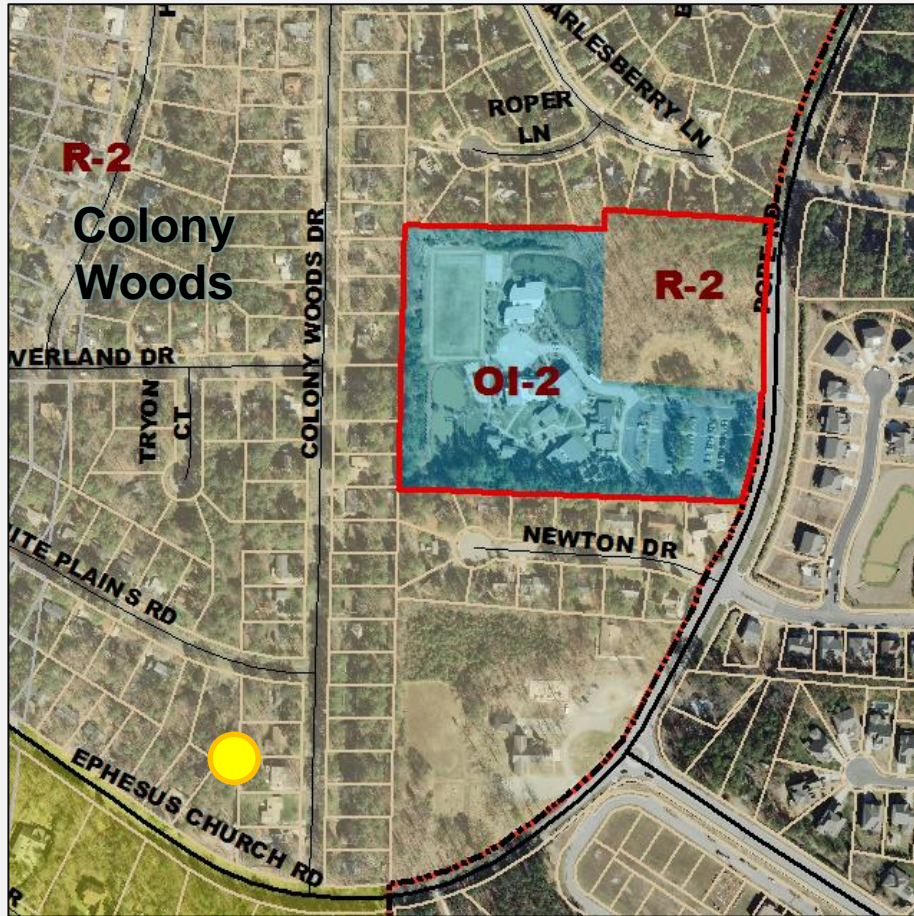
- Close the public hearing
- Approve the Application



Where is this in the process?

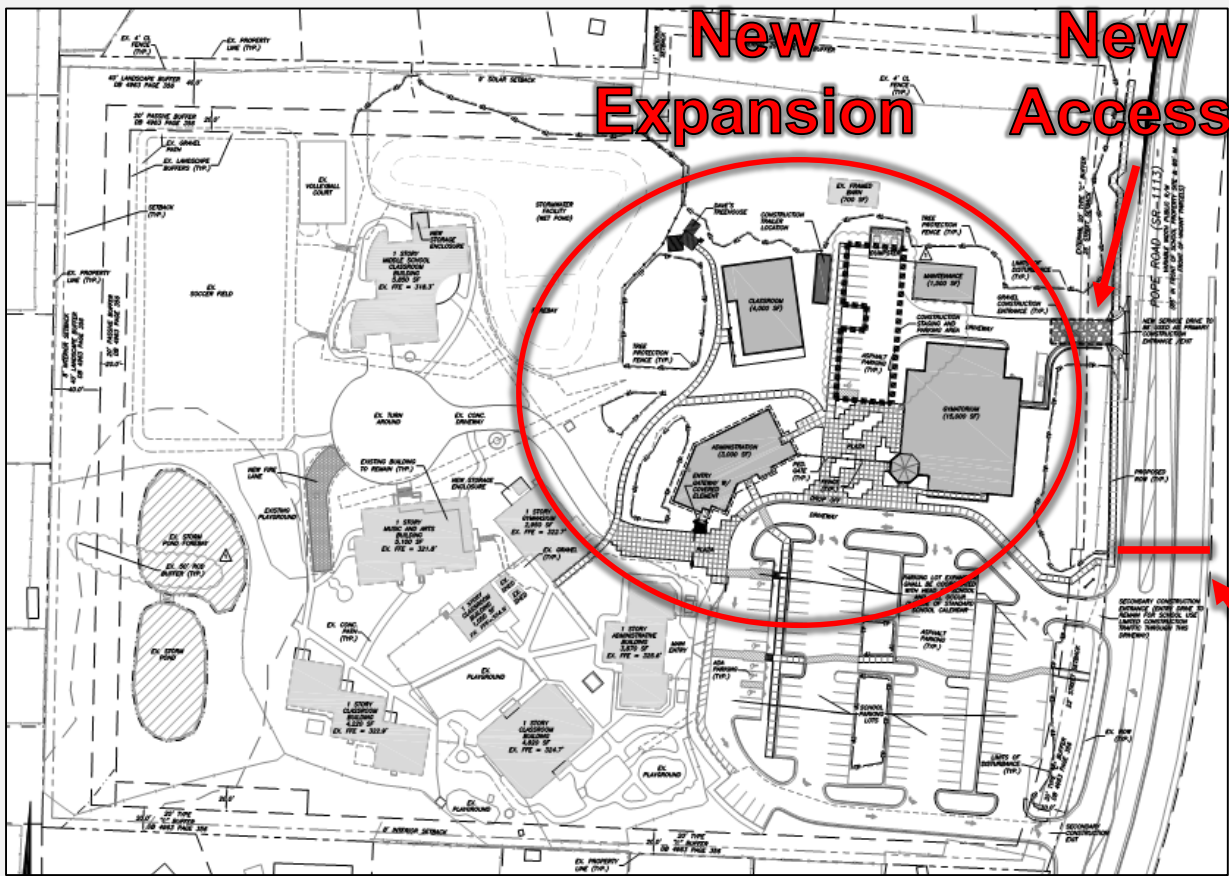


Aerial Map - Montessori



DRAFT

Proposal - Montessori



Proposal

- New service drive
- Four new buildings
- Parking increase to 122
- 30 new bicycle parking spaces

Pedestrian Crossing

DRAFT

Revisions

Sidewalk

- Applicant has agreed to construct sidewalk for entirety of Pope Road property frontage.

Lighting

- Applicant will notify nearby residents of lighting plan review.

DRAFT

Modification to Regulations

Modifications:

- 1) Eastern Landscape Buffer to Maintain Existing Buffer
(30' Type D *to a* 30' and 20' Type C)
- 2) Increase Parking Spaces From 84 to 122.

DRAFT

Recommendation

- Close the Public Hearing
- Approve the Special Use Permit Modification.

