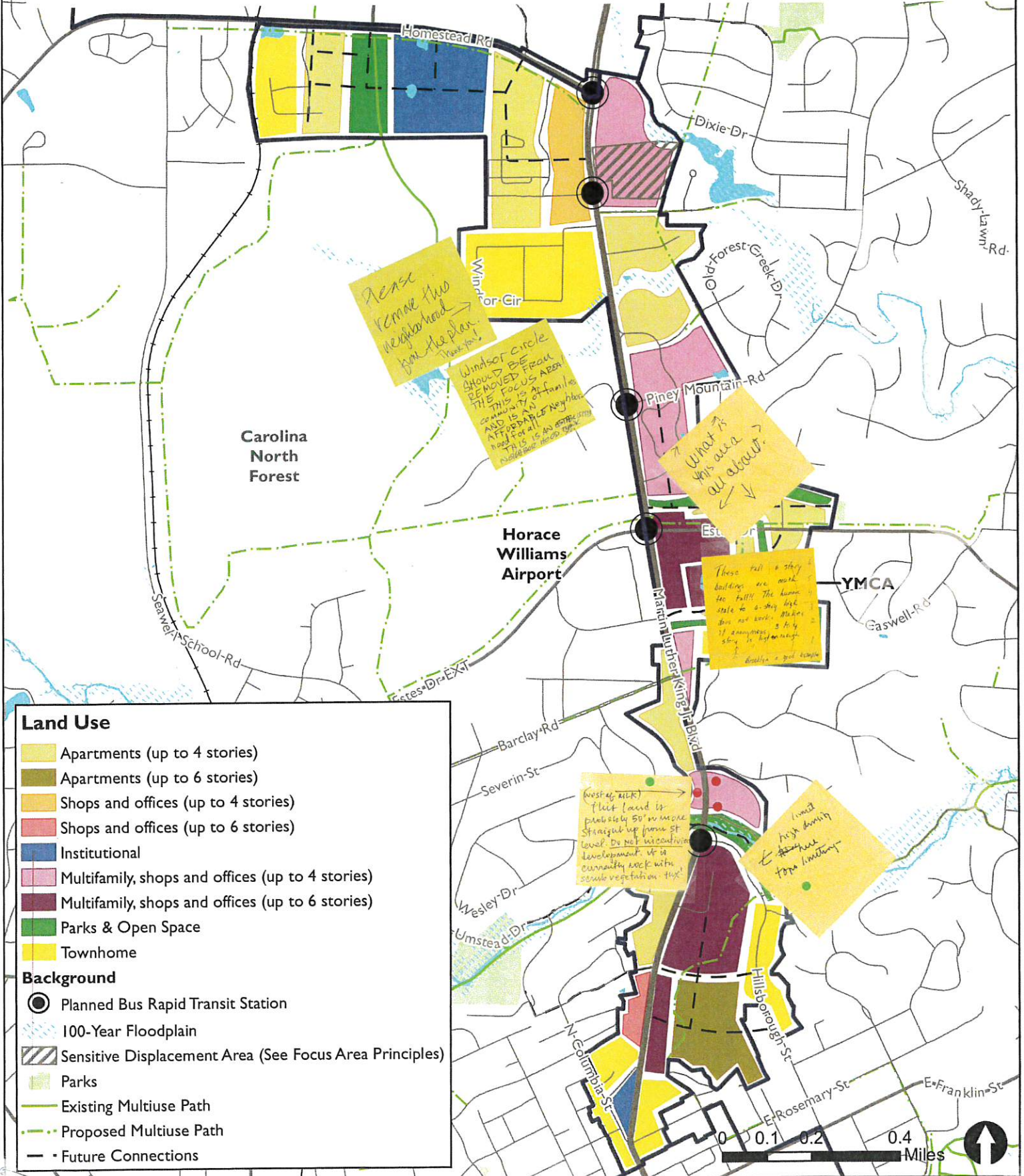
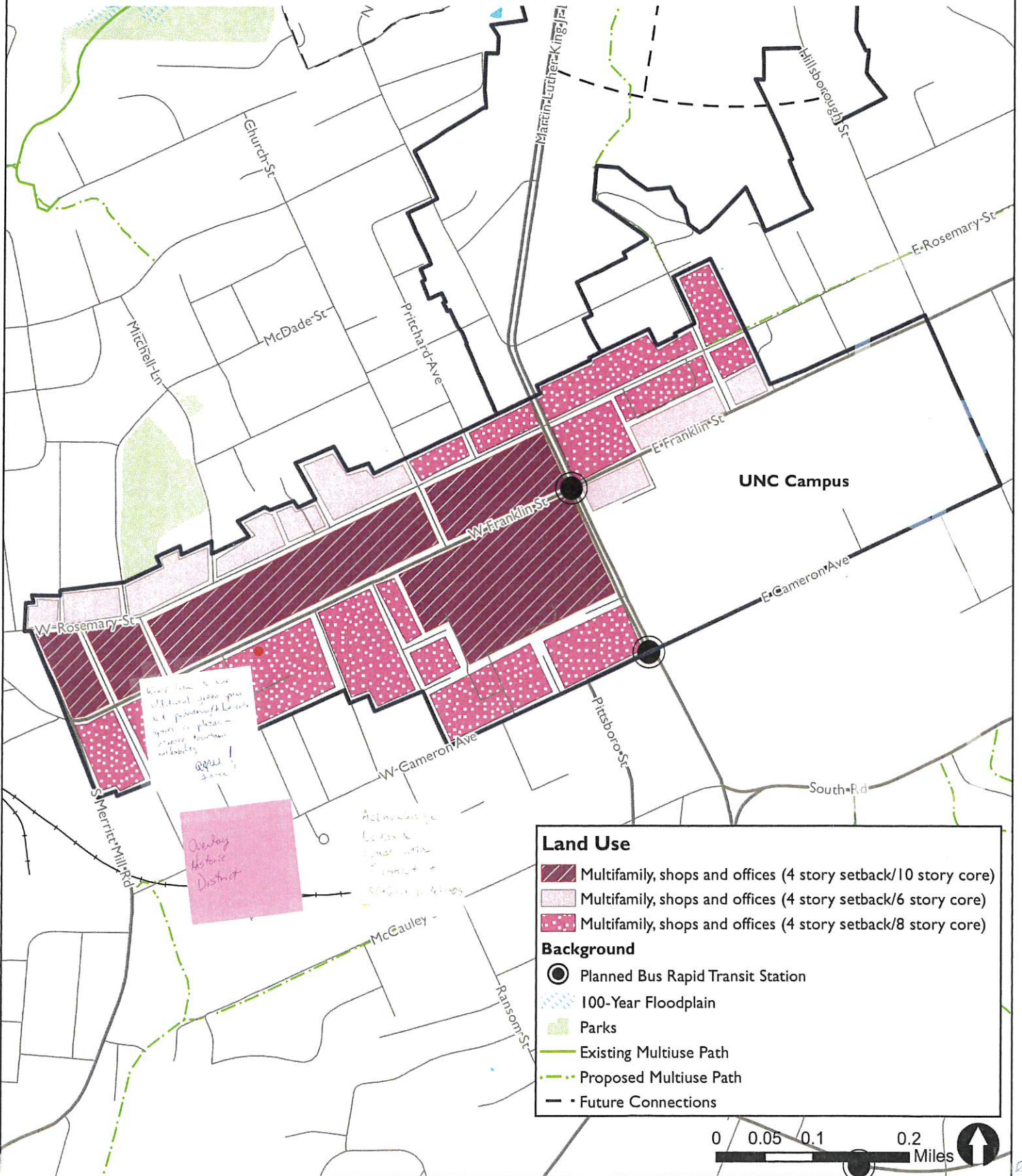


South Martin Luther King, Jr. Boulevard Future Land Use | In 2049



Downtown Future Land Use | In 2049



Land Use

- Multifamily, shops and offices (4 story setback/10 story core)
- Multifamily, shops and offices (4 story setback/6 story core)
- Multifamily, shops and offices (4 story setback/8 story core)

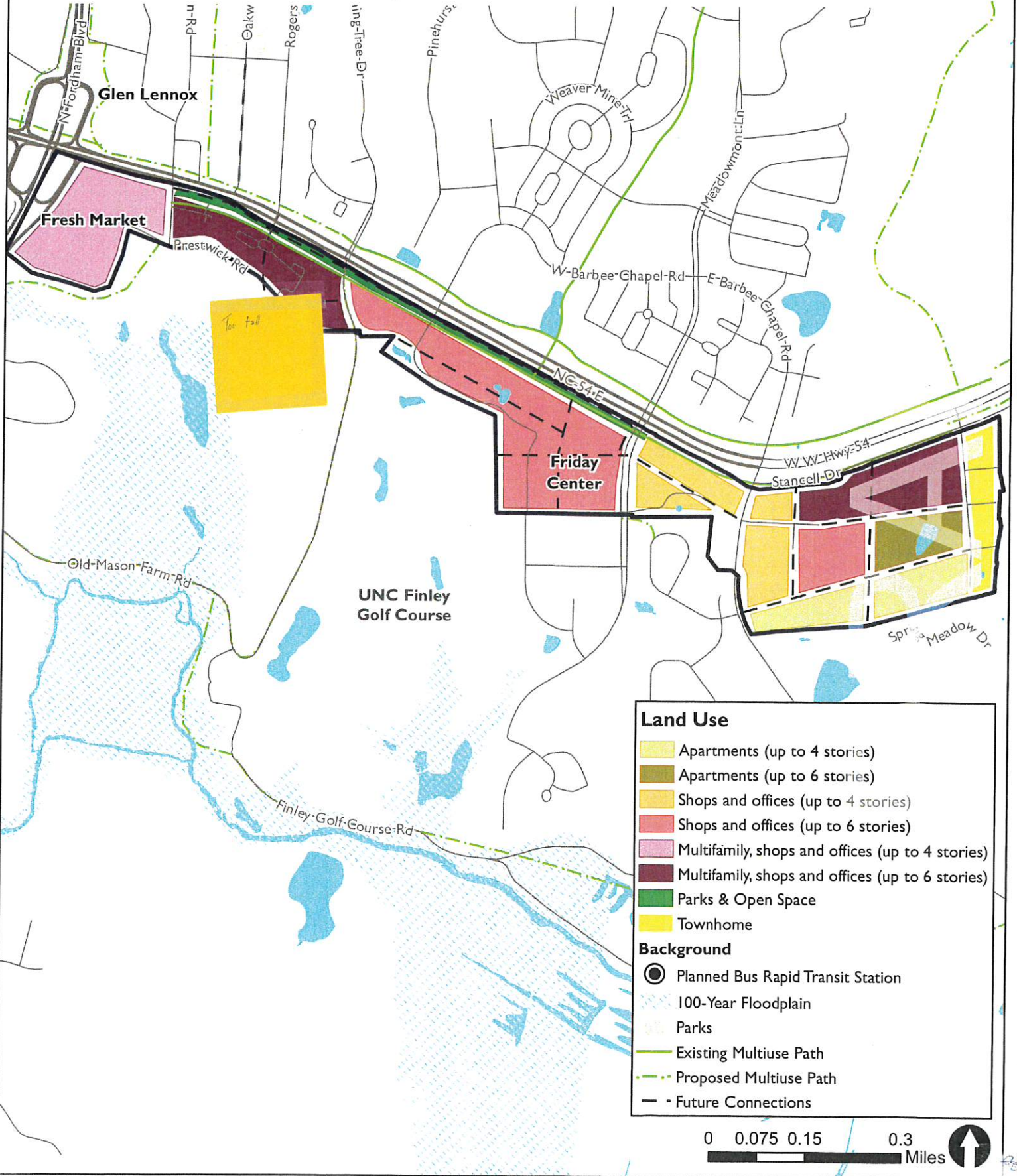
Background

- Planned Bus Rapid Transit Station
- 100-Year Floodplain
- Parks
- Existing Multiuse Path
- Proposed Multiuse Path
- Future Connections



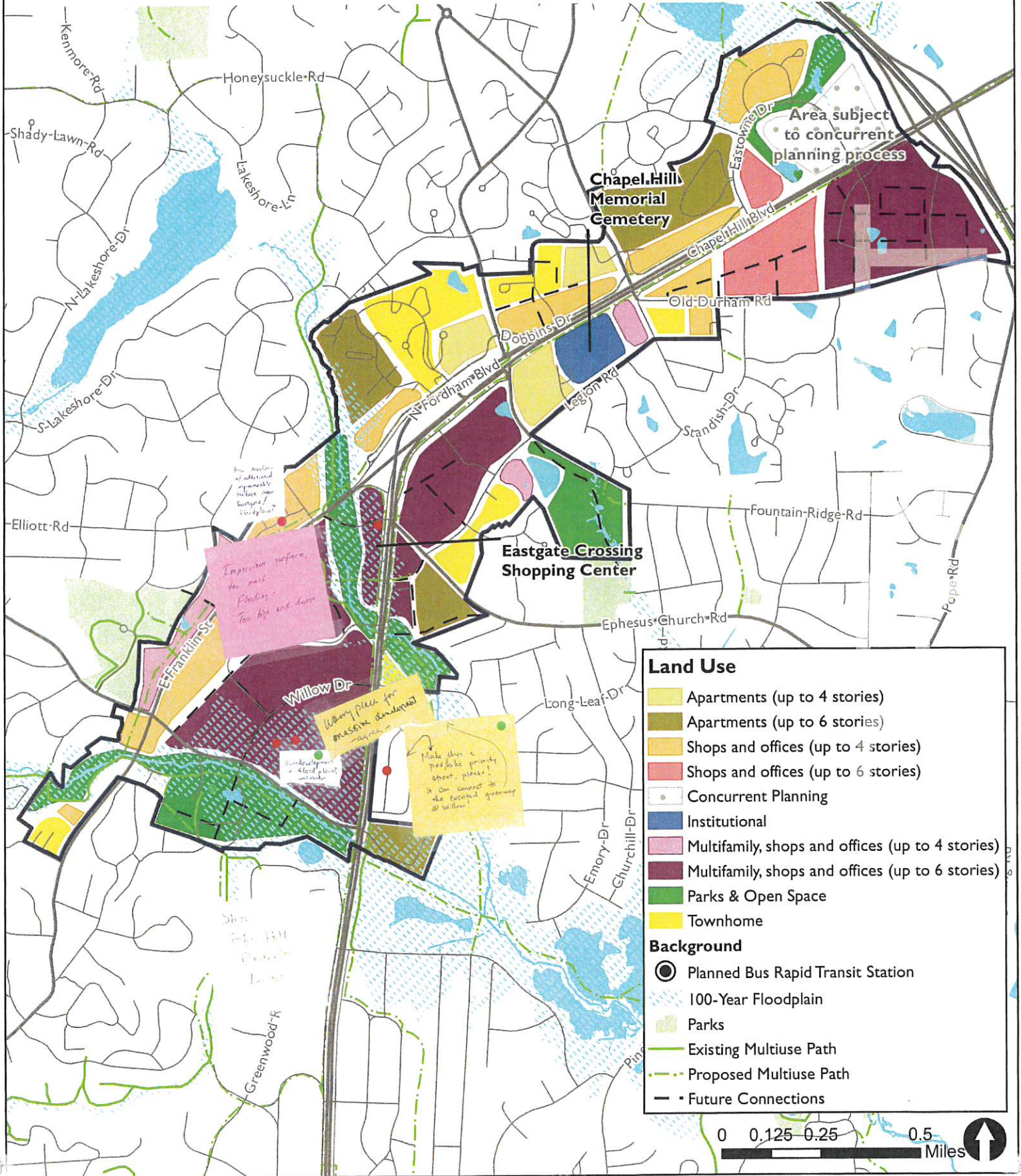
NC 54

Future Land Use | In 2049



North I5-501

Future Land Use | In 2049



Land Use

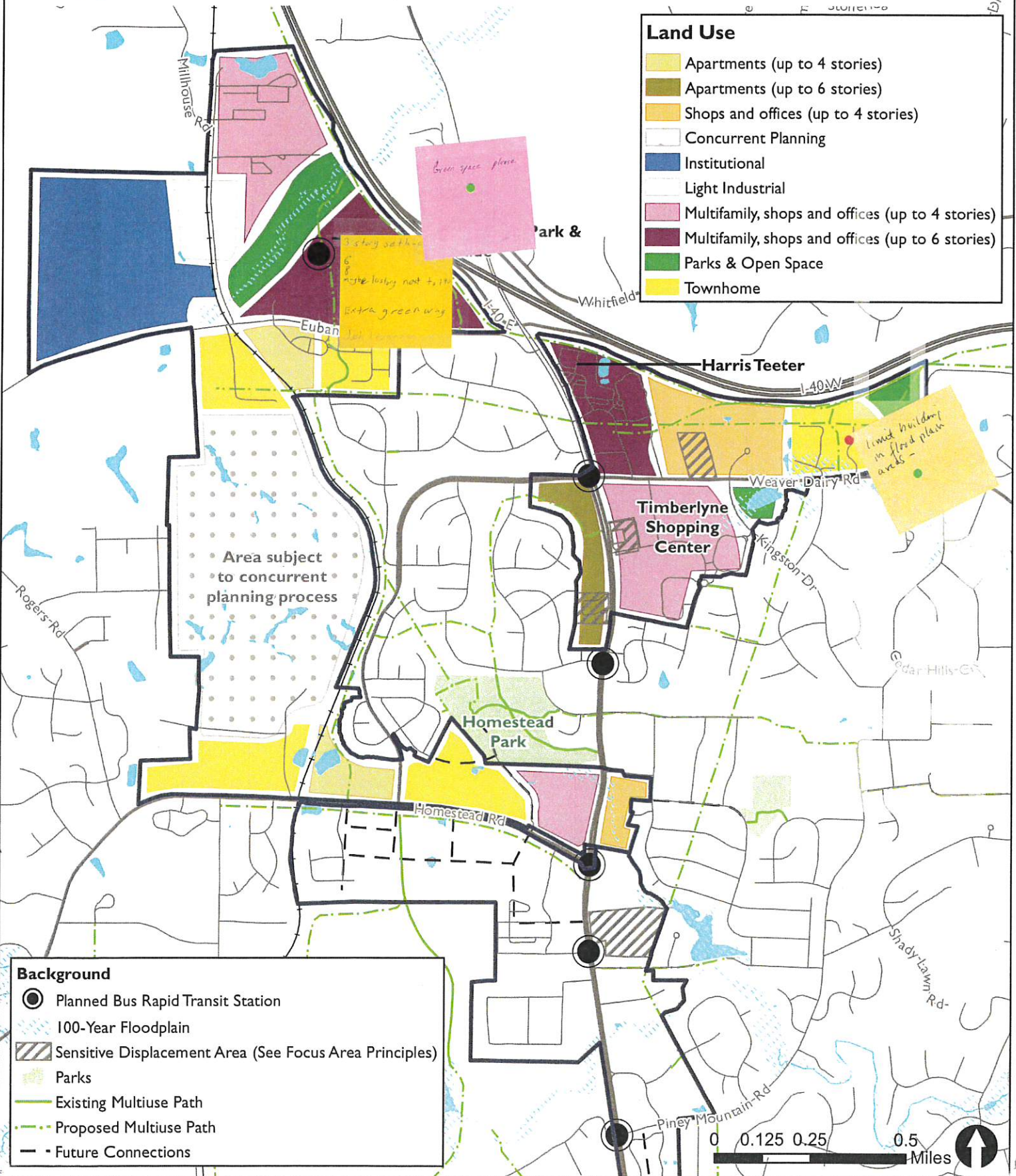
- Light yellow: Apartments (up to 4 stories)
- Dark yellow: Apartments (up to 6 stories)
- Orange: Shops and offices (up to 4 stories)
- Red: Shops and offices (up to 6 stories)
- White with dashed lines: Concurrent Planning
- Blue: Institutional
- Pink: Multifamily, shops and offices (up to 4 stories)
- Dark red: Multifamily, shops and offices (up to 6 stories)
- Green: Parks & Open Space
- Yellow: Townhome

Background

- Black circle: Planned Bus Rapid Transit Station
- Blue hatched: 100-Year Floodplain
- Light green: Parks
- Green line: Existing Multiuse Path
- Dashed green line: Proposed Multiuse Path
- Black dashed line: Future Connections



North Martin Luther King, Jr. Boulevard Future Land Use | In 2049



South I-501 Gateway Future Land Use | In 2049

