

# Chapel Hill Parks & Recreation Splash Pad and Inclusive Playground Study Final Report: Supplemental Document



**Town Council Meeting  
June 14, 2023**



# OUTLINE

- ❖ Project Scope Review
- ❖ Summary of Public Engagement
- ❖ Inclusive Playground Planning Process
- ❖ Future Consideration
- ❖ Next Steps
- ❖ Questions

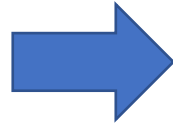
# PROJECT SCOPE

- ❖ Advise on Inclusive and Accessible Playgrounds
- ❖ Advise on Pocket Park vs. Destination Splash Pad(s)
- ❖ Elements Used for Recommendations Included:
  - Park location assessment
  - Evaluation of splash pad operating systems
  - Estimated costs for design, construction, operations and maintenance and project development schedules
  - Community input
  - Identification of most feasible phasing of development

# PROCESS TIMELINE

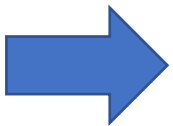
## FALL 2022 – PROGRESS PRESENTATION

- Town park and housing development site visits
- Summary of needs
- Splash pad and inclusive playground facility options
- Summary of general costs for facilities



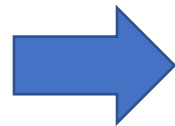
## INPUT FROM PARKS COMMISSION AND COUNCIL

- Splash facility should incorporate a recirculation system (not flow through)
- Splash facility – start with a location where there are existing restrooms
- Aim for locating one medium size splash pad facility
- No consensus on whether a new inclusive playground should be at the same location as a splash facility, or a separate location



## WINTER AND SPRING 2023

- Public input
- Conceptual location of new facilities within chosen park locations



## JUNE 2023

- Submission of final report to Town Council

# PUBLIC ENGAGEMENT

## How did we engage with public input?

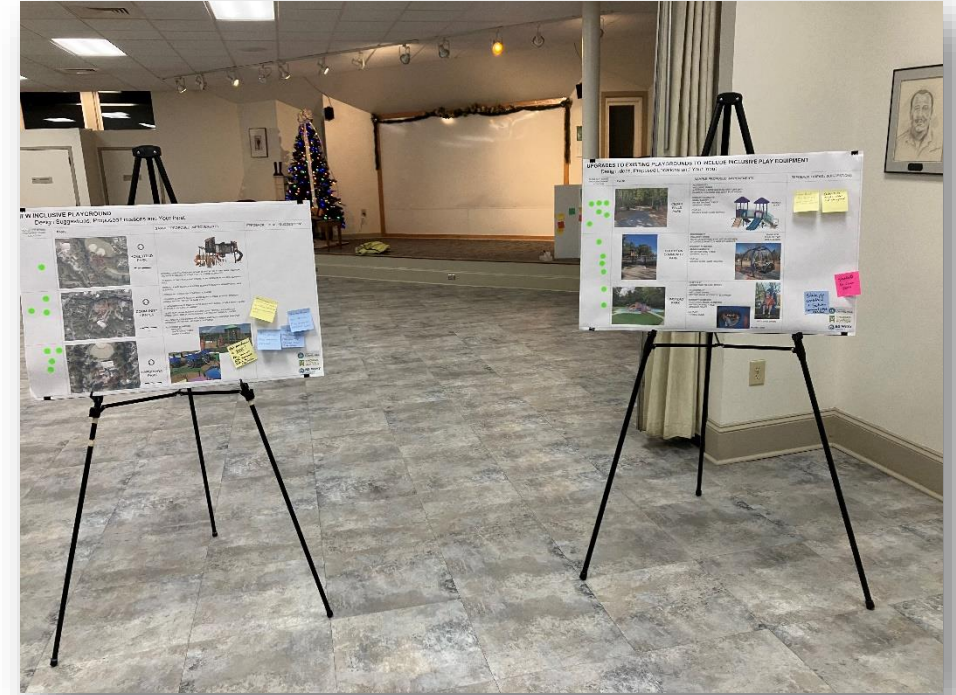
### Public Outreach:

Winter 2023 - public outreach to over 75,000 people through:

- List Serves
- Town Website
- Youth Sport Games
- Community Events
- Public Meetings

### On-line Survey:

- Survey was available over a 6-week period
  - November 28, 2022 to February 10, 2023
- Offered in English, Spanish, Burmese, and Chinese
- 906 Responses



Splash Pad and Inclusive Playground Study



# PUBLIC PREFERENCE: SPLASH PAD FACILITIES

## PUBLIC PREFERENCE FOR SPLASH PARK SIZE

- One medium Sized Location: 514
- Multiple Smaller Facilities: 273
- No Preference: 119

## PUBLIC PREFERENCE FOR SPLASH PARK LOCATION

- Homestead: 425
- Community Center: 360
- Hargraves: 124

## ACCESSORY ELEMENTS TO BE INCLUDED IN A MEDIUM SIZED DESTINATION SPLASH PAD

- Shade: 664
- New or Renovated Restrooms with Changing Facilities: 627
- Benches and Tables: 579
- Public Art: 328

## PUBLIC PREFERENCE FOR SPLASH PARK DESIGN

- Nature Based: 518
- Contemporary: 247
- Traditional/Ground Sprays: 67
- Themed: 61



*Sample layout of destination size splash park*

\*Numbers shown reflect amount of responses

**Splash Pad and Inclusive Playground Study**

# PUBLIC PREFERENCE: INCLUSIVE PLAYGROUND FACILITIES

## PUBLIC PREFERENCE FOR INCLUSIVE PLAYGROUND PARK LOCATION

- Community Center: 353
- Homestead: 216
- Hargraves: 118

## PUBLIC PREFERENCE FOR DESTINATION PLAYGROUND VS. EXISTING FACILITY IMPROVEMENTS

- New Destination Playground : 375
- Existing Playground Improvements : 52
- Do Both : 461

## ACCESSORY ELEMENTS TO BE INCLUDED IN A PLAYGROUND FACILITY

- Shade: 716
- New or Renovated Restrooms with Changing Facilities: 618
- Benches and Tables: 552
- Public Art: 374

\*Numbers shown reflect amount of responses



Concept layout – Burke Playground System

Splash Pad and Inclusive Playground Study

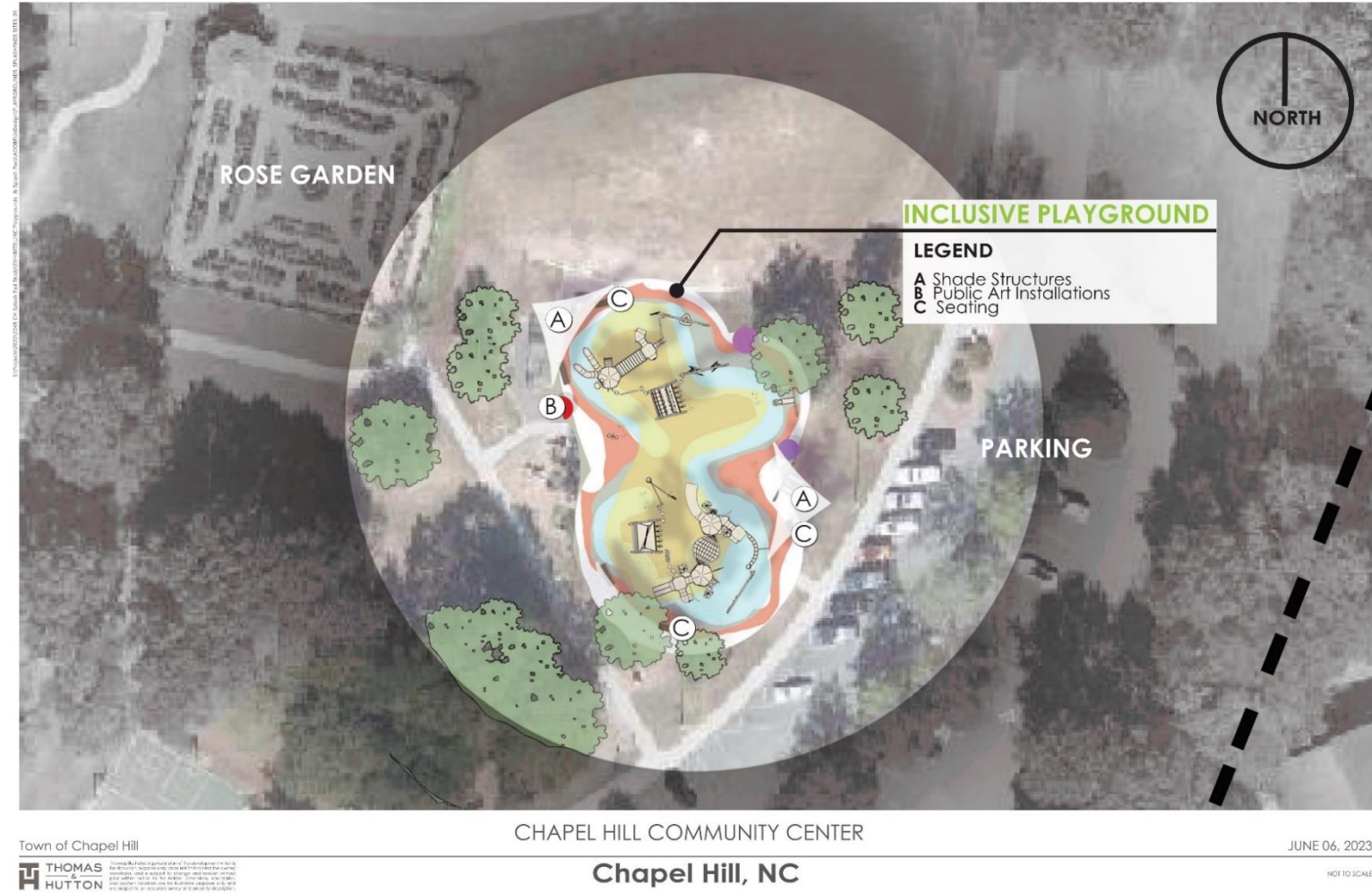
# INCLUSIVE PLAYGROUND PLANNING PROGRESS

## Approved ARPA Funded Playground Projects

**\$500,000:** For New Inclusive Playground at Chapel Hill Community Center

Plus

**\$285,000:** For Adaptive Improvements at Existing Playgrounds Parks System-Wide such as Cedar Falls Park, Hargraves Community Park, Southern Community Park, and Umstead Park.



Splash Pad and Inclusive Playground Study



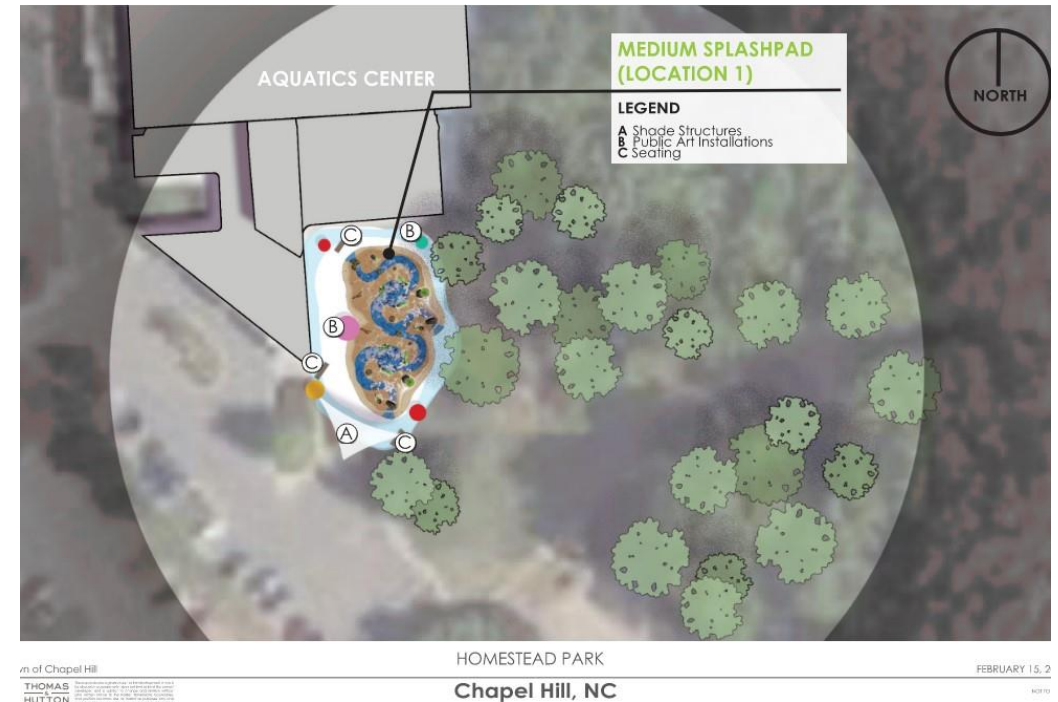
# RECOMMENDATIONS FOR THE FUTURE

## Inclusive Playgrounds

- Parking Improvements at Community Center Park: \$200,000 (parking, related pedestrian access improvement, stormwater mitigation)
- Improvements to Restroom Facilities: \$600,000 per restroom starting with Chapel Hill Community Center Park

## Splash Pad Installation

- Design and Construction of a Mid-Sized Nature-based Splash Pad Facility at Homestead Park: \$900,000 (excludes parking, restrooms, shade structure)
- Additional Restroom/Change Area Improvements to Restroom Facility: \$600,000 (to be accessible without entry into the Aquatics Center)
- Add Shade Structure: \$100,000



# NEXT STEPS

## **Complete ARPA Funded Playground Projects:**

- Design
- Permit
- Install the Playground Equipment

## **Future Needs:**

- Funding for Improvements to Restroom Facilities
- Funding for Parking Expansion at Chapel Hill Community Center Park
- Funding for Splash Pad at Homestead Park

## **What are we seeking from Council after review of final report and supplemental document?**

- Feedback on the Final Report and Supplemental Document.
- Continued support for the implementation of an inclusive playground, inclusive elements at other Town parks with associated amenities, and the development of a future splash pad.

Thank You For Your Interest,  
Commitment, and Support.

