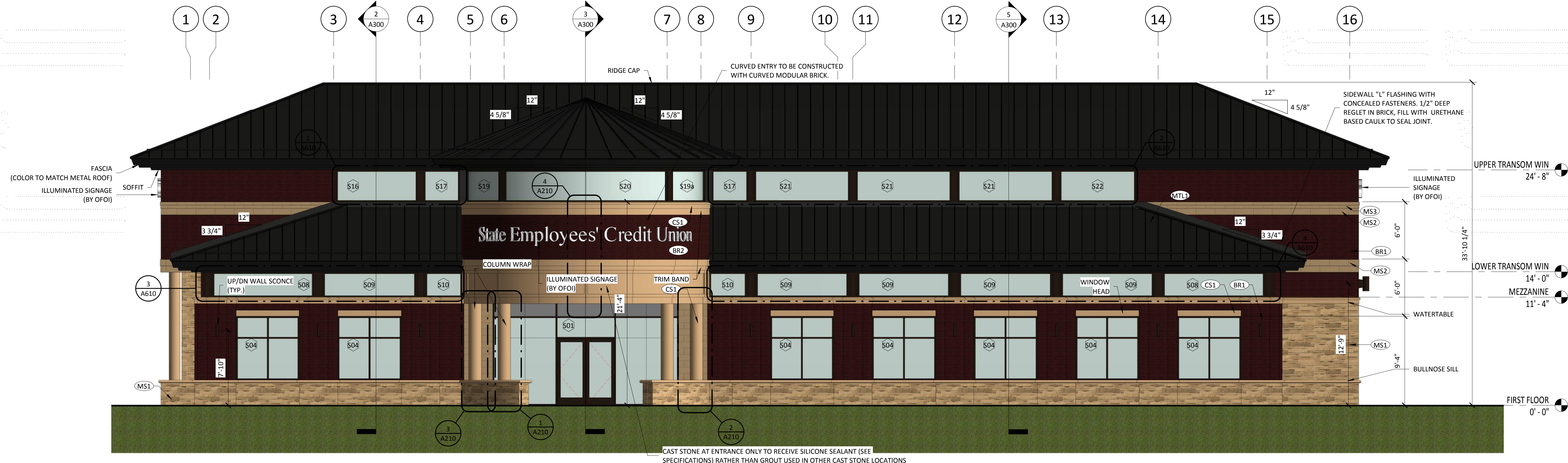


KEY	MATERIAL	MNFR.	ID	FINISH	COMMENTS
BR1	BRICK	LEE BRICK	#H08	BEAUFORT	NORMAN SIZE W/ HOLCIM "SANTIE BLACK" TYPE S MORTAR
BR2	BRICK	LEE BRICK	#H08	BEAUFORT	CURVED MODULAR SIZE W/ HOLCIM "SANTIE BLACK" TYPE S MORTAR
CS1	CAST STONE	ARRISCRAFT	ARRISCRAFT	CAFE	HOLCIM "COLUMBIAN TAN" TYPE S MORTAR
MS1	FULL WIDTH MASONRY STONE	ARRISCRAFT	SHADOW STONE	BASEP	3/4" SHADOW STONE W/ HOLCIM "TROY" TYPE S MORTAR
MS2	FULL WIDTH MASONRY STONE	ARRISCRAFT	8" RENAISSANCE	CAFE	HOLCIM "COLUMBIAN TAN" TYPE S MORTAR
MS3	FULL WIDTH MASONRY STONE	ARRISCRAFT	4" RENAISSANCE	CAFE	HOLCIM "COLUMBIAN TAN" TYPE S MORTAR
MS4	FULL WIDTH MASONRY STONE	ARRISCRAFT	12" RENAISSANCE	CAFE	HOLCIM "COLUMBIAN TAN" TYPE S MORTAR
F	GLASS				FILM ON SURFACE #4 (BY OWNER)
T	GLASS				LOW E, INSULATED
MTL1	STANDING SEAM METAL ROOF	SEE SPECS	SEE SPECS	SEE SPECS	CUSTOM COLOR MATCH TO HMETCO'S CHARCOAL

- GENERAL NOTES:**
- ALL TRIM AND FLASHING TO MATCH ADJACENT SURFACE (UNO).
  - REFER TO SHEETS A220 FOR EXPANSION JOISTS LAYOUTS.

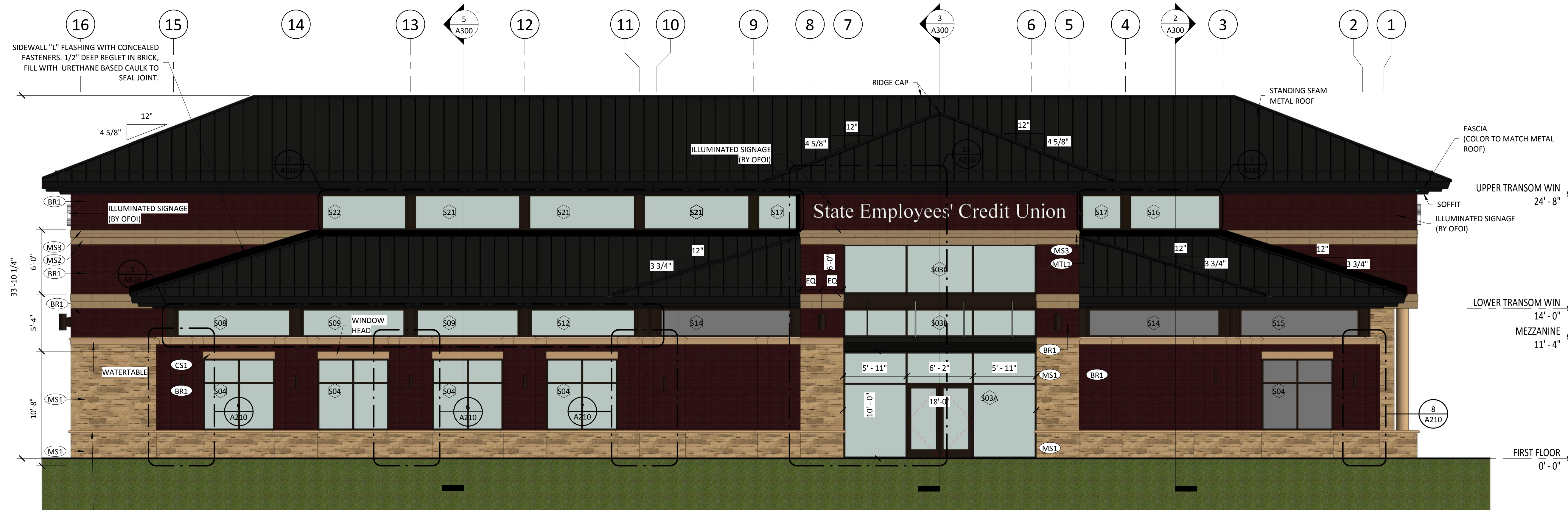


**1 FRONT ELEVATION**  
3/16" = 1'-0"



**3 LEFT ELEVATION**  
3/16" = 1'-0"

**2 RIGHT ELEVATION**  
3/16" = 1'-0"



**4 REAR ELEVATION**  
3/16" = 1'-0"

NO.	REVISIONS	DATE	BY

NO.	REVISIONS	DATE	BY