

PROJECT NAME:
**NEW SHEETZ STORE
CHAPEL HILL**

1200 & 1204
Martin Luther King, Jr. Boulevard
Chapel Hill, Orange County
NC

OWNER:
SHEETZ, INC.

5700 SIXTH AVE.
ALTOONA, PA 16602

CONSULTANT

PROFESSIONAL

KEYPLAN

ISSUE:	04/28/2022
PROJECT NO:	145252
AUTHOR BY:	LDW
REVIEW BY:	TMC
SHEET TITLE	

EXTERIOR
ELEVATIONS

A200

PRELIMINARY ELEVATIONS



1 FRONT ELEVATION - EAST
1/4" = 1'-0"

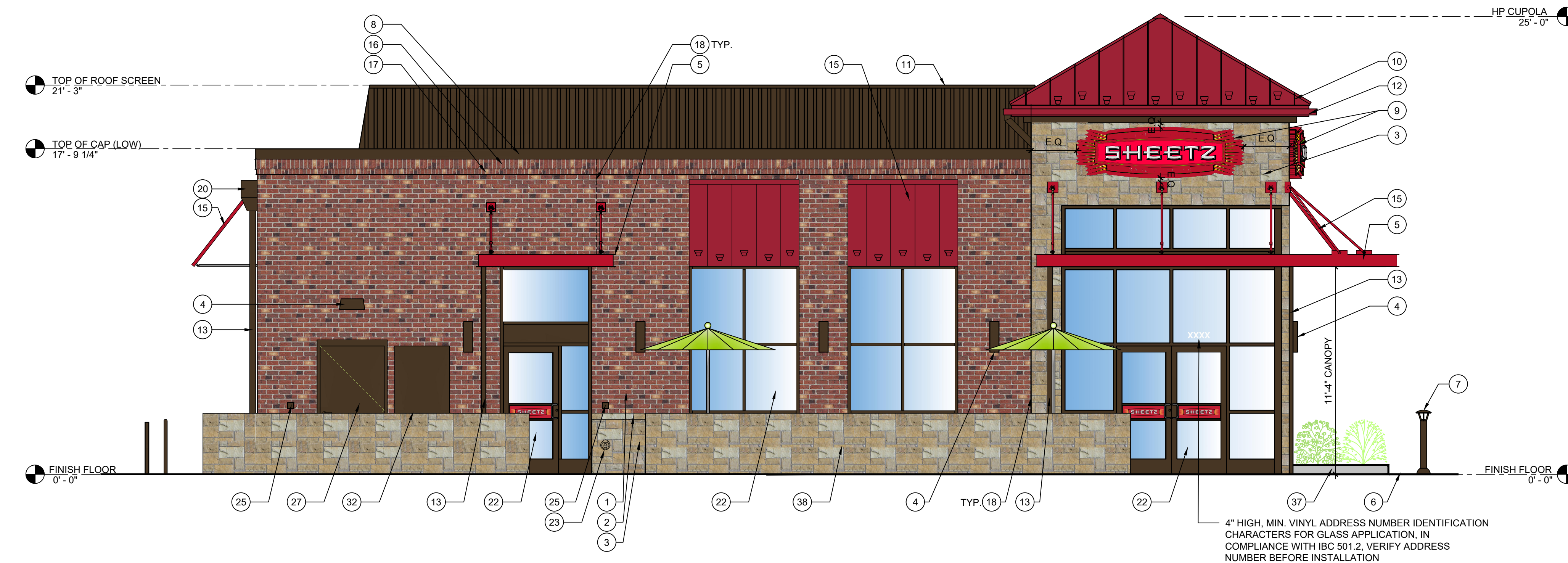
TYPICAL EXTERIOR ELEVATION NOTES:

- ALL LIGHTS SHOWN ABOVE AND/OR BELOW DOORS OR WINDOWS ARE TO BE CENTERED ON THE DOOR OR WINDOW UNLESS NOTED OTHERWISE.
- FIXTURES/EQUIPMENT BETWEEN TWO DOORS OR WINDOWS ARE TO BE CENTERED EQUALLY.

EXTERIOR ELEVATION KEYNOTES:

- BRICK VENEER (0/S 680 MOD BY CONTINENTAL BRICK CO.)
- CAST STONE SILL (COLOR = CRAB ORCHARD)
- ANCHORED CAST STONE MASONRY VENEER (COLOR = CRAB ORCHARD)
- EXTERIOR LIGHT FIXTURE. SEE ELEC DWGS
- ARCHITECTURAL CANOPY (COLOR = REGAL RED, PREMIUM TWO-COAT KYMAR FINISH)
- BRICK PAVER WALKWAY
- LIGHTED BOLLARD
- METAL COPING (COLOR = DARK BRONZE)
- WALL MOUNTED BUILDING SIGN, INTERNALLY ILLUMINATED. SEE SHEET A200.
- STANDING SEAM METAL ROOF (COLOR = BRITE RED)
- ROOF EQUIPMENT SCREEN (COLOR = DARK BRONZE)
- GUTTER (COLOR = RED)
- DOWNSPOUT (COLOR = DARK BRONZE)
- DRIVE-THRU WINDOW (IF APPLICABLE)
- METAL STANDING SEAM SHED STYLE AWNING AND FRAME ASSEMBLY (ROOF COLOR = BRITE RED, FRAME COLOR = DARK BRONZE)
- BRICK SOLDIER COURSE (0/S 680 MOD BY CONTINENTAL BRICK CO.)
- BRICK ROWLOCK COURSE (0/S 680 MOD BY CONTINENTAL BRICK CO.)
- CONTROL JOINT SEE MASONRY SPECS FOR COLOR
- STEEL ROOF LADDER AND CRANKY POST (COLOR = DARK BRONZE)
- STANDARD THROUGH WALL SCUPPER W/ CONDUCTOR HEAD & DOWNSPOUT (COLOR = DARK BRONZE)
- OVERFLOW SCUPPER
- ALUMINUM STOREFRONT SYSTEM
- EXTERIOR HOSE BIB
- OUTDOOR FURNITURE
- ELECTRICAL RECEPTACLE (REFER TO ELECTRICAL DRAWINGS)
- ELECTRICAL EQUIPMENT (REFER TO ELECTRICAL DRAWINGS)
- HM DOOR AND FRAME (COLOR = DARK BRONZE)
- EMERGENCY WATER CONNECTION
- SEAMLESS ALUM. PANEL SYSTEM W/ EXPOSED FASTENERS - COLOR: DARK BRONZE
- PROPANE LOCKER
- ICE MERCHANDISER
- GREASE STORAGE TANK (COLOR = DARK BRONZE)
- STEEL BOLLARD (COLOR = DARK BRONZE)
- CO2 FILLPORT
- DECORATIVE ALUMINUM FENCE
- FAUX WINDOWS WITH INTERNAL GRAPHIC
- PLANTER BED
- LOW STONE WALL. - COLOR: CRAB ORCHARD

2 LEFT ELEVATION - SOUTH
1/4" = 1'-0"



A WALL MOUNTED "SHEETZ" BUILDING SIGN
1/2" = 1'-0"



B WALL MOUNTED "M.T.O." BUILDING SIGN
1/2" = 1'-0"

PROJECT NAME:
**NEW SHEETZ STORE
CHAPEL HILL**

1200 & 1204
Martin Luther King, Jr. Boulevard
Chapel Hill, Orange County
NC

OWNER:
SHEETZ, INC.

5700 SIXTH AVE.
ALTOONA, PA 16602

CONSULTANT

PROFESSIONAL

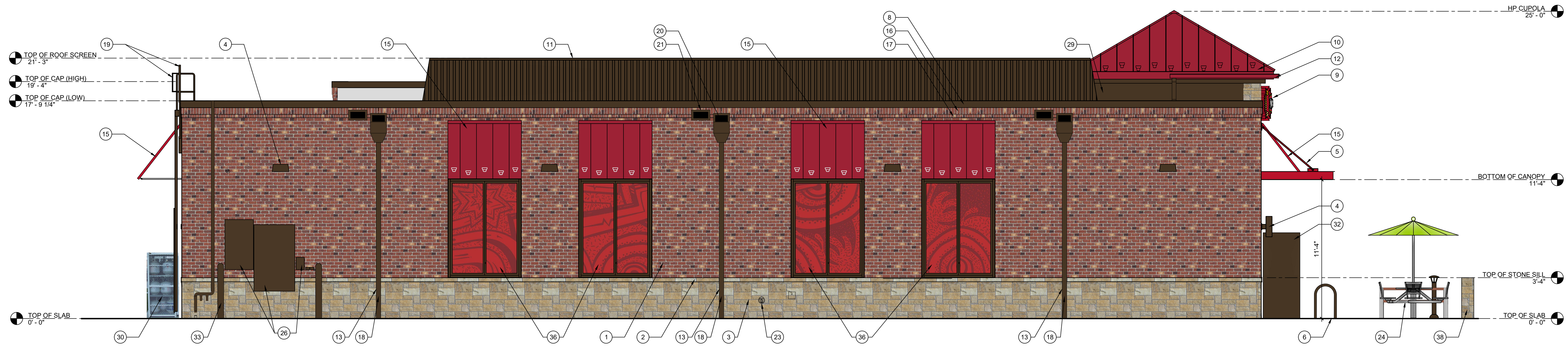
KEYPLAN

ISSUE: **04/28/2022**
PROJECT NO: **145252**
AUTHOR BY: LDW
REVIEW BY: TMC
SHEET TITLE

CONCEPT
EXTERIOR
ELEVATIONS

A201

PRELIMINARY ELEVATIONS



3 REAR ELEVATION - WEST
1/4" = 1'-0"

TYPICAL EXTERIOR ELEVATION NOTES:

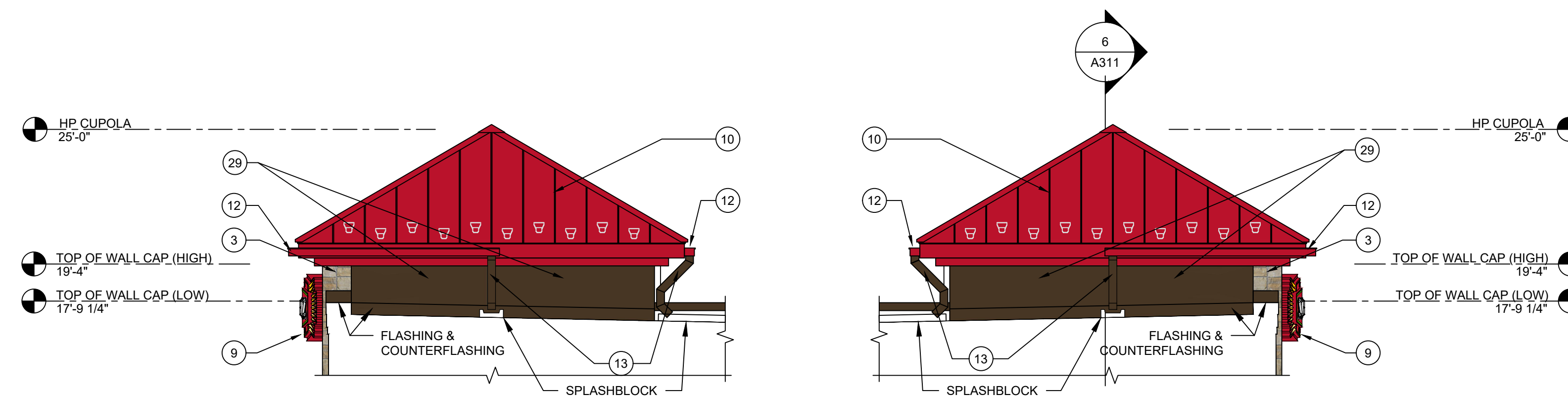
- ALL LIGHTS SHOWN ABOVE AND/OR BELOW DOORS OR WINDOWS ARE TO BE CENTERED ON THE DOOR OR WINDOW UNLESS NOTED OTHERWISE.
- FIXTURES/EQUIPMENT BETWEEN TWO DOORS OR WINDOWS ARE TO BE CENTERED EQUALLY.

EXTERIOR ELEVATION KEYNOTES:

- BRICK VENEER (0/S 680 MOD BY CONTINENTAL BRICK CO.)
- CAST STONE SILL (COLOR = CRAB ORCHARD)
- ANCHORED CAST STONE MASONRY VENEER (COLOR = CRAB ORCHARD)
- EXTERIOR LIGHT FIXTURE. SEE ELEC DWGS
- ARCHITECTURAL CANOPY (COLOR = REGAL RED, PREMIUM TWO-COAT KYNAR FINISH)
- BRICK PAVER WALKWAY
- LIGHTED BOLLARD
- METAL COPING (COLOR = DARK BRONZE)
- WALL MOUNTED BUILDING SIGN, INTERNALLY ILLUMINATED. SEE SHEET A200.
- STANDING SEAM METAL ROOF (COLOR = BRITE RED)
- ROOF EQUIPMENT SCREEN (COLOR = DARK BRONZE)
- GUTTER (COLOR = RED)
- DOWNSPOUT (COLOR = DARK BRONZE)
- DRIVE-THRU WINDOW (IF APPLICABLE)
- METAL STANDING SEAM SHED STYLE AWNING AND FRAME ASSEMBLY (ROOF COLOR = BRITE RED, FRAME COLOR = DARK BRONZE)
- BRICK SOLDIER COURSE (0/S 680 MOD BY CONTINENTAL BRICK CO.)
- BRICK ROWLOCK COURSE (0/S 680 MOD BY CONTINENTAL BRICK CO.)
- CONTROL JOINT SEE MASONRY SPECS FOR COLOR
- STEEL ROOF LADDER AND CRANKY POST (COLOR = DARK BRONZE)
- STANDARD THROUGH WALL SCUPPER W/ CONDUCTOR HEAD & DOWNSPOUT (COLOR = DARK BRONZE)
- OVERFLOW SCUPPER
- ALUMINUM STOREFRONT SYSTEM
- EXTERIOR HOSE BIB
- OUTDOOR FURNITURE
- ELECTRICAL RECEPTACLE (REFER TO ELECTRICAL DRAWINGS)
- ELECTRICAL EQUIPMENT (REFER TO ELECTRICAL DRAWINGS)
- HM DOOR AND FRAME (COLOR = DARK BRONZE)
- EMERGENCY WATER CONNECTION
- SEAMLESS ALUM. PANEL SYSTEM W/ EXPOSED FASTENERS - COLOR: DARK BRONZE
- PROPANE LOCKER
- ICE MERCHANTISER
- GREASE STORAGE TANK (COLOR = DARK BRONZE)
- STEEL BOLLARD (COLOR = DARK BRONZE)
- CO2 FILLPORT
- DECORATIVE ALUMINUM FENCE
- FAUX WINDOWS WITH INTERNAL GRAPHIC
- PLANTER BED
- LOW STONE WALL, - COLOR: CRAB ORCHARD



4 RIGHT ELEVATION - NORTH
1/4" = 1'-0"



5 CUPOLA FROM ROOF
1/4" = 1'-0"

6 CUPOLA FROM ROOF
1/4" = 1'-0"

MARK DATE DESCRIPTION

PROJECT NAME:
**NEW SHEETZ SITE
CHAPEL HILL**

1200 MLK
Martin Luther King Jr Blvd.
Orange County
North Carolina

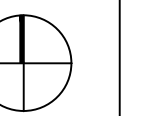
OWNER:
SHEETZ, INC.

5700 SIXTH AVE.
ALTOONA, PA 16602

CONSULTANT

PROFESSIONAL

KEYPLAN

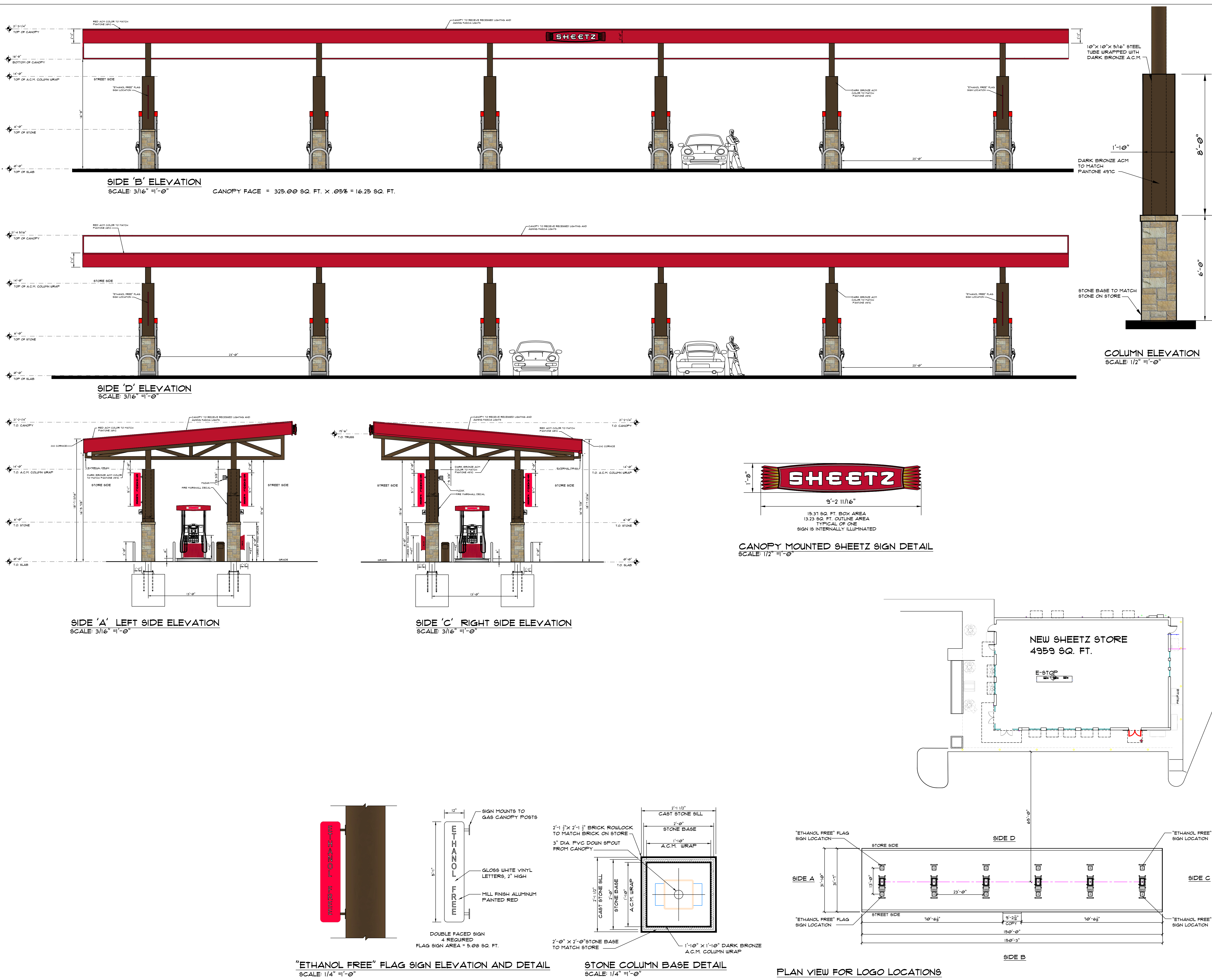


MARK	DATE	DESCRIPTION

ISSUE: **04-18-22**
PROJECT NO:
AUTHOR BY: NMI
REVIEW BY:
SHEET TITLE

GAS AWNING

AWNING



PROJECT NAME:
**NEW SHEETZ SITE
CHAPEL HILL**

1200 MLK
Martin Luther King Jr Blvd.
Orange County
North Carolina

OWNER:
SHEETZ, INC.

5700 SIXTH AVE.
ALTOONA, PA 16602

CONSULTANT

PROFESSIONAL

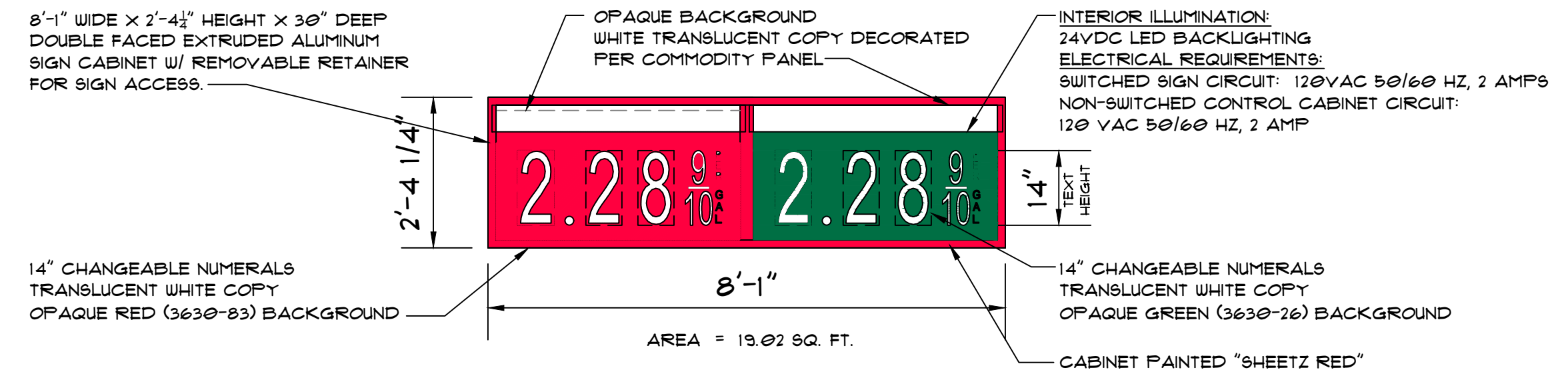
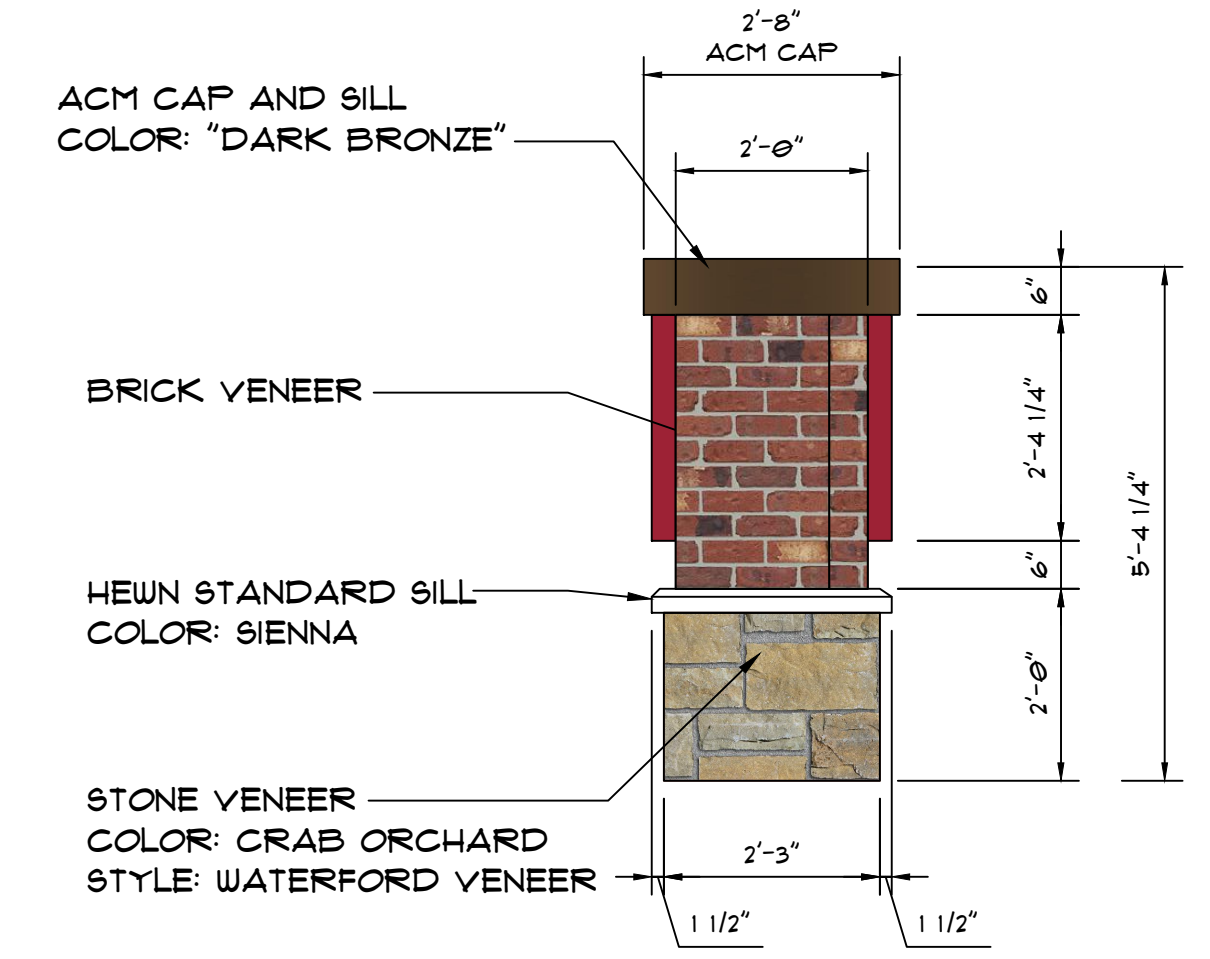
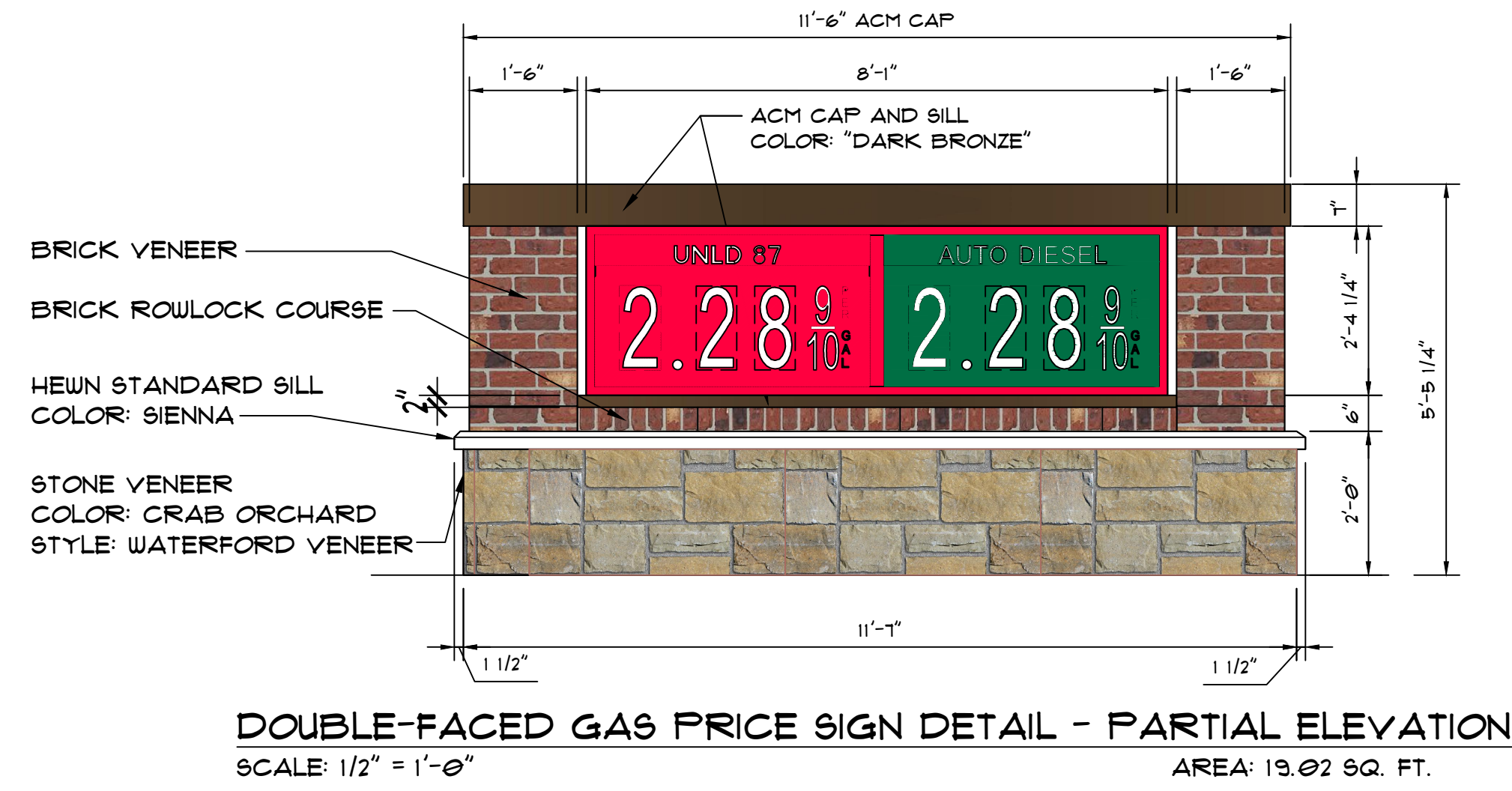
KEYPLAN

MARK	DATE	DESCRIPTION

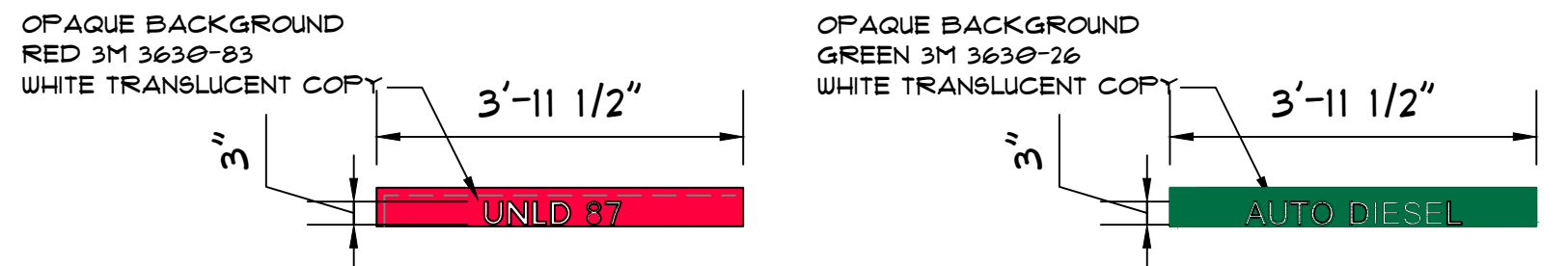
ISSUE:	09-28-21
PROJECT NO:	
AUTHOR BY:	NMI
REVIEW BY:	
SHEET TITLE:	

MONUMENT SIGN
DETAILS

SIGN



UNLD 87 TO BE ON STREET SIDE OF SIGN FOR BOTH SIDES



PROJECT NAME:
NEW SHEETZ STORE
CHAPEL HILL

1200 & 1204
Martin Luther King, Jr. Boulevard
Chapel Hill, Orange County, NC

OWNER:
SHEETZ, INC.

5700 SIXTH AVE.
ALTOONA, PA 16602

CONSULTANT

PROFESSIONAL

KEYPLAN

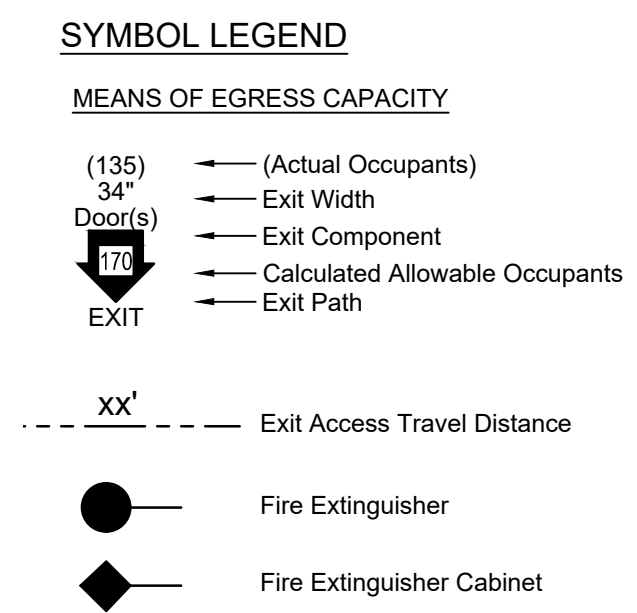
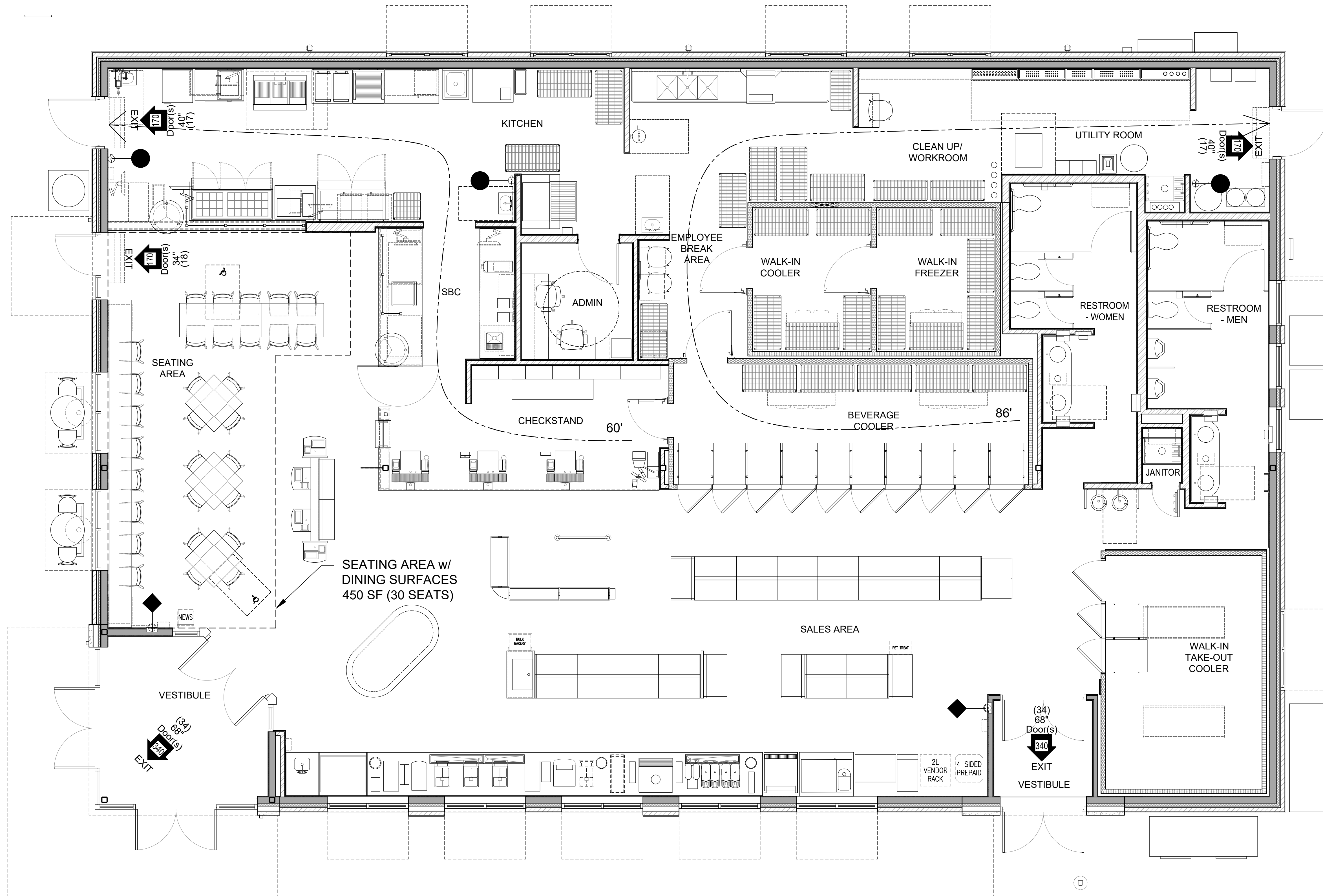
MARK	DATE	DESCRIPTION
RJK	10/29/21	ADDED BIKE RACK AND PLANTER
BOL	5/7/21	SIGNAGE ADDED, RETAIL ENTRY SHIFTED

ISSUE: **05/03/22**
PROJECT NO: 145252
AUTHOR BY:
REVIEW BY:
SHEET TITLE

COVER SHEET

G001

SCHEMATIC DESIGN



FLOOR PLAN
1/4" = 1'-0"

PROJECT NAME:
NEW SHEETZ STORE
CHAPEL HILL

1200 & 1204
Martin Luther King, Jr. Boulevard
Chapel Hill, Orange County, NC

OWNER:
SHEETZ, INC.

5700 SIXTH AVE.
ALTOONA, PA 16602

CONSULTANT

PROFESSIONAL

KEYPLAN

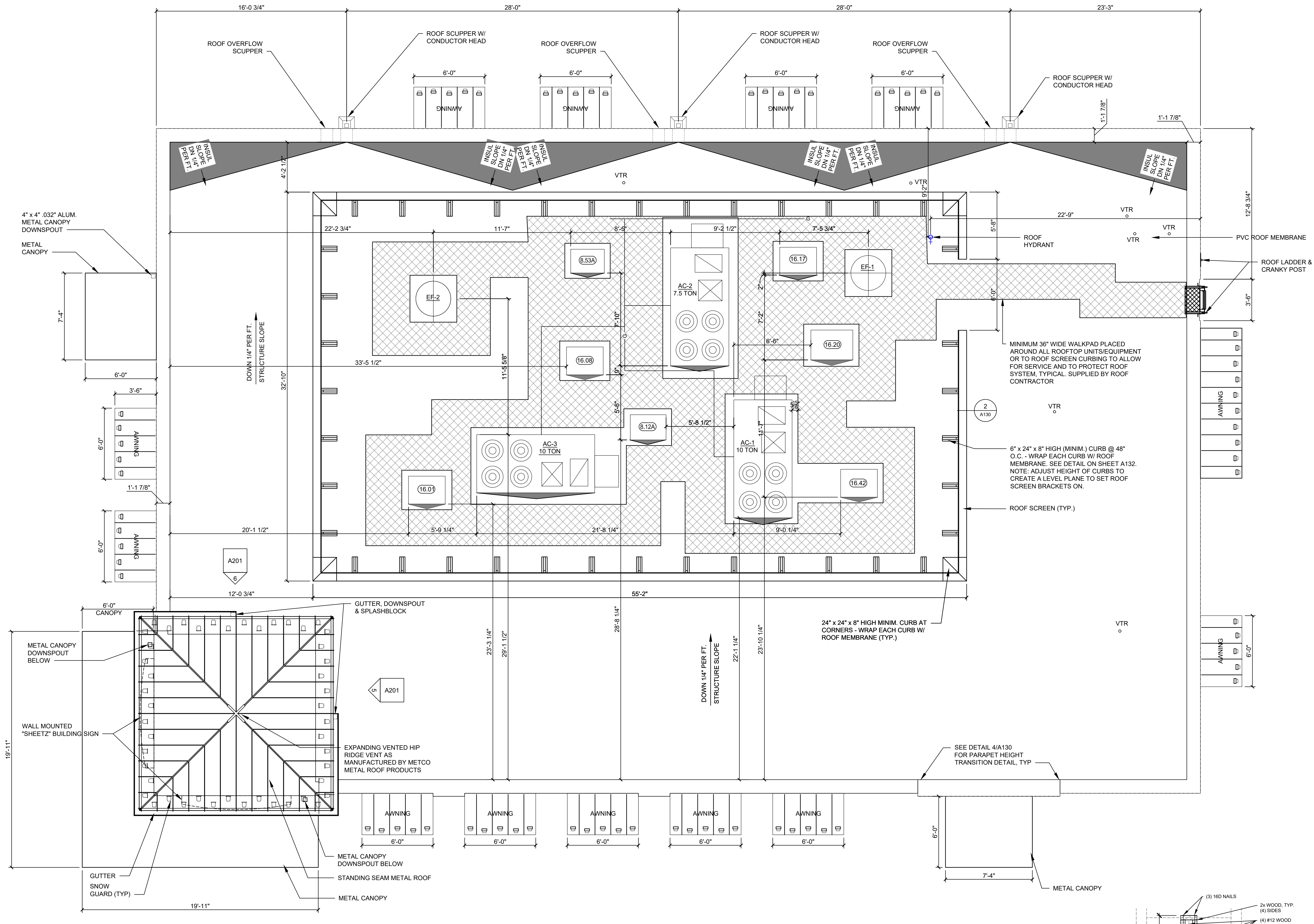
MARK	DATE	DESCRIPTION
RJK	10/29/21	ADDED BIKE RACK AND PLANTER
BOL	5/7/21	SIGNAGE ADDED, RETAIL ENTRY SHIFTED

ISSUE: **05/03/22**
PROJECT NO: 145252
AUTHOR BY:
REVIEW BY:
SHEET TITLE

ROOF PLAN

A130

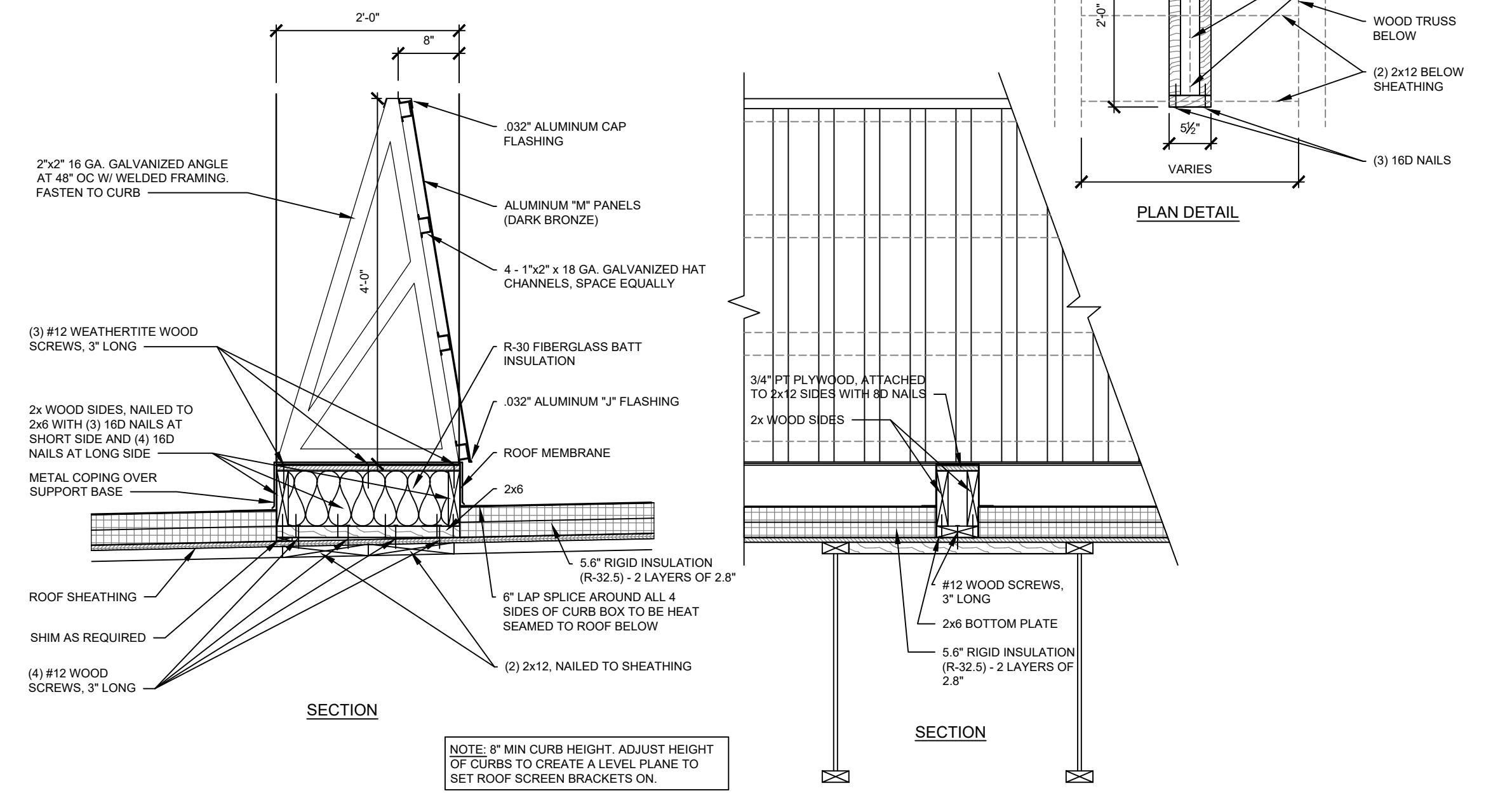
SCHEMATIC DESIGN



1 ROOF PLAN
1/4" = 1'-0"

Equip No	Item Description	Count	Installed by	Connected by
8.12A	ICE MACHINE CONDENSING UNIT (ROOF)	1	OWNER	EC
8.53A	ICE MACHINE CONDENSING UNIT (ROOF)	1	OWNER	EC
16.01	CONDENSING UNIT (ROOF) - OPEN AIR RTE CASE	1	OWNER	EC
16.08	CONDENSING UNIT (ROOF) - WALK-IN COOLER	1	OWNER	EC
16.17	CONDENSING UNIT (ROOF) - WALK-IN FREEZER	1	OWNER	EC
16.20	CONDENSING UNIT (ROOF) - BEVERAGE COOLER	1	OWNER	EC
16.42	CONDENSING UNIT (ROOF) - WALK-IN TAKE-OUT COOLER	1	OWNER	EC

NOTE: AC-1, AC-2, & AC-3 ARE AIR CONDITIONING UNITS
EF-1 & EF-2 ARE EXHAUST FANS



2 ROOF SCREEN DETAILS
1" = 1'-0"

NOTE: 8" MIN CURB HEIGHT. ADJUST HEIGHT OF CURBS TO CREATE A LEVEL PLANE TO SET ROOF SCREEN BRACKETS ON.