



Chick-fil-A

Chick-fil-A
5200 Buffington Road
Atlanta, Georgia
30349-2998

ROY A. WILLIAMS, ARCHITECT
750 OLD HICKORY BLVD, SUITE 250
BRENTWOOD, TN 37027
PHONE: 615.377.3111
EMAIL: GENMAIL@EANDHARCH.COM

PROTOTYPICAL SET

NOT FOR
REGULATORY
APPROVAL,
BIDDING, OR
CONSTRUCTION

CHICK-FIL-A
CHAPEL HILL U.P.LACE
FSU
UNIVERSITY PLACE
CHAPEL HILL, NC 27514

FSR#04954
BUILDING TYPE / SIZE: P14 LS LRG
RELEASE: 22.08
PRINTED FOR
DESIGN

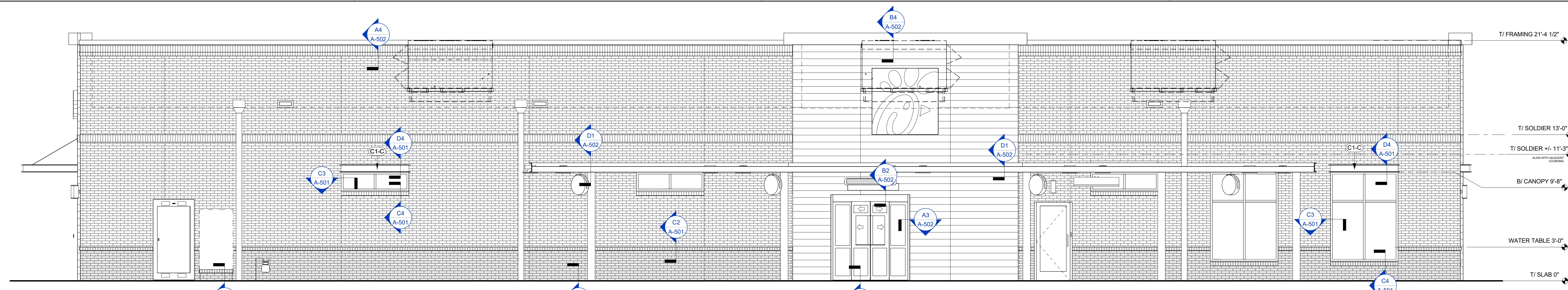
REVISION SCHEDULE		
NO.	DATE	DESCRIPTION

CONSULTANT PROJECT #
DATE: 12/5/2022

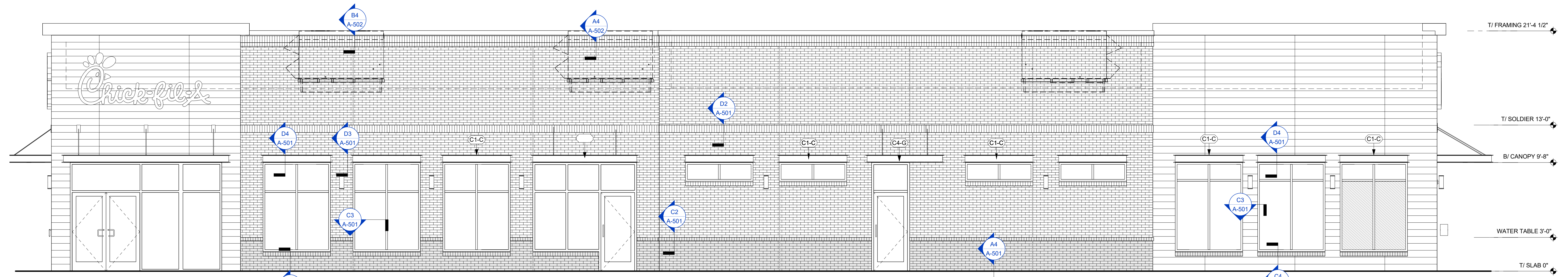
DRAWN BY: Author
Information contained on this drawing and in all digital files produced for above named project may not be reproduced in any manner without express written or verbal consent from authorized project representatives.

EXTERIOR ELEVATIONS

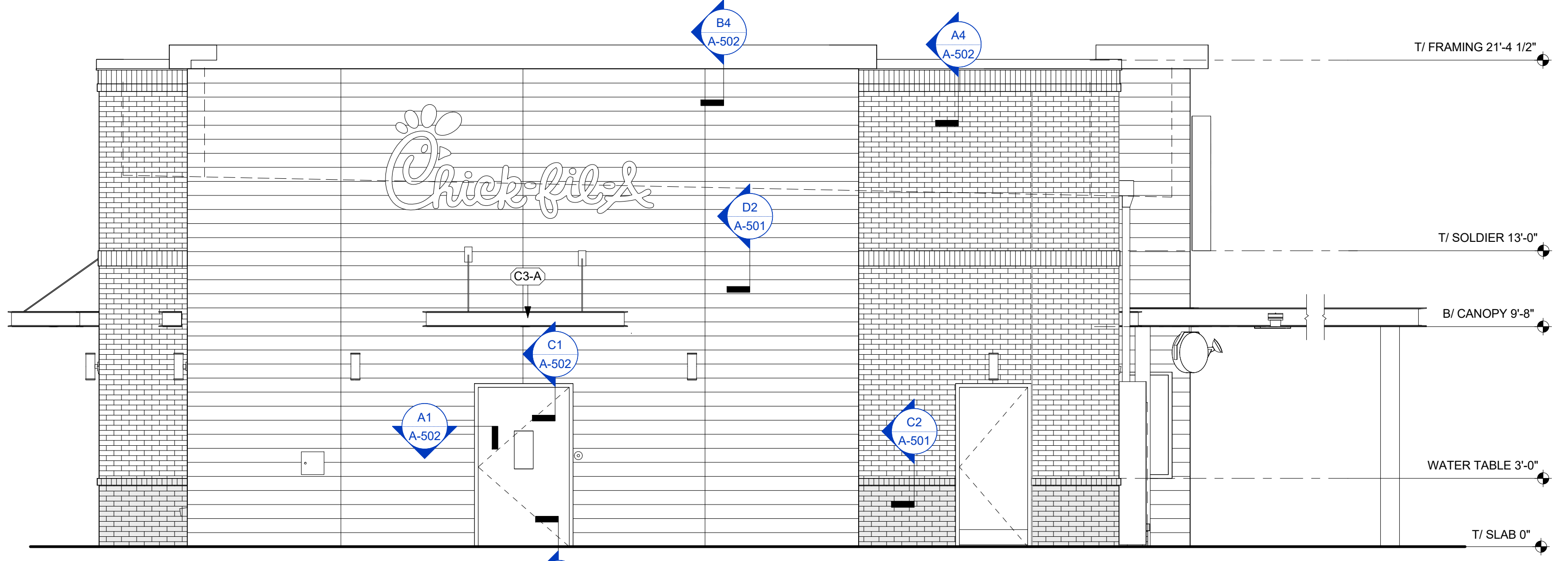
SHEET NUMBER
A-301



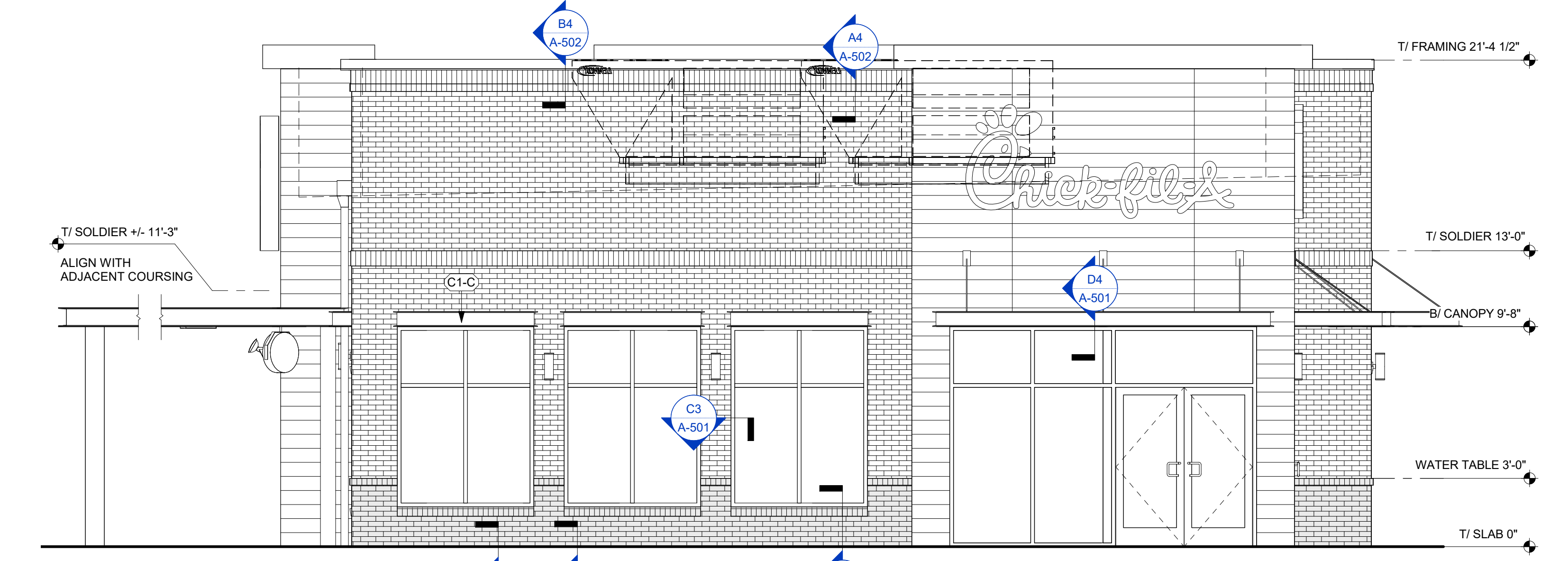
D4 EXTERIOR ELEVATION
1/4" = 1'-0"



C4 EXTERIOR ELEVATION
1/4" = 1'-0"



B4 EXTERIOR ELEVATION
1/4" = 1'-0"



B2 EXTERIOR ELEVATION
1/4" = 1'-0"

FINISH SCHEDULE - EXTERIOR						
MARK	DESCRIPTION	MANUFACTURER	MODEL NAME	MODEL NUMBER	COLOR	NOTE
BR-A	BRICK VENEER (PRIMARY)	US BRICK	MODULAR		BLUE BLACK VELOUR	MORTAR: TBD
BR-B	BRICK VENEER (ACCENT)	ACME	MODULAR		GLACIER WHITE	MORTAR: TBD
CM-1	WOOD COMPOSITE MATERIAL	RESYSTA INTERNATIONAL	FAÇADE CLADDING 7CH	RESP340812	CO2: PALE GOLDEN	
CP-1	CANOPY METAL FASCIA		DURA COAT	DC195T-2703	BLACK	OIL RUBBED BRONZE METALLIC TEXTURE PVD
CP-2	CANOPY METAL DECK				WHITE	SMOOTH WHITE, HIGH GLOSS
EC-1	PARAPET WALL COPING	DUROLAST / EXCEPTIONAL METALS			COAL BLACK	
PT-100	EXTERIOR PAINT	SHERWIN WILLIAMS	SHER-CRYL HIGH PERFORMANCE ACRYLIC #B66-350	SW 2807	IRON ORE	REFUSE ENCLOSURE. FINISH: SEMI-GLOSS ON DOOR FRAMES, SATIN ON WALLS
PT-113	EXTERIOR PAINT	SHERWIN WILLIAMS	SHER-CRYL HIGH PERFORMANCE ACRYLIC #B66-350		IRON ORE	FINISH: SEMI-GLOSS
ST-1	STOREFRONT	YKK	YES 45		BLACK, ANODIZED	

ATTACHED CANOPY SCHEDULE					
Mark	Description	Count	Overall Width	Overall Depth	Tie Back Mounting (Offset From Top)
C1-C	Exterior Canopy	15	6'-4"	1'-0"	No
C3-A	Exterior Canopy	2	<varies>	<varies>	Yes
C4-G	Exterior Canopy	1	7'-0"	4'-0"	Yes
C4-L	Exterior Canopy	2	15'-0"	4'-0"	Yes
Grand total		20			

GENERAL NOTES:
1. ALL SIGNAGE PROVIDED BY OTHERS
2. REF FLOOR PLAN AND WINDOW LEGEND FOR STOREFRONT INFORMATION

CANOPY NOTES:
BUILDING MOUNTED CANOPIES - 8" THICK CANOPY - KYNAR FINISH OF STRUCTURE, FASCIA, & DECKING TO MATCH (CP-1)
COLUMN MOUNTED CANOPIES - 10" THICK CANOPY - FINISH OF STRUCTURE TO BE (CP-1) - FINISH OF DECKING TO BE (CP-2)

LEGEND

(BR-B)	EXPANSION JOINT, SEALANT COLOR TO MATCH MORTAR COLOR		OIL EXTRACTION PORT ACCESS BOX
(BR-A)	CARD READER BY SECURITY VENDOR - RE: ELEC		CO2 FILL BOX - RE: KITCHEN
(CM-1)	SCUPPER - PT-113 SEE A2 / A-503		LIGHT FIXTURE - RE: ELECTRICAL
(EC-1)	DOWNSPOUT - PT-113 SEE A4 / A-503		CT CABINET - PT-113 RE: ELECTRICAL
	MDP - PT-113 RE: ELECTRICAL		

11/22/2022 2:04:41 PM Autodesk Docs://NC_04954_Chapel Hill University Place_2021.8_FSR04954_Chapel Hill University Place_ARC.rvt 10-LS-04954-A-301-EXTERIOR ELEVATIONS



Chick-fil-A
 5200 Buffington Road
 Atlanta, Georgia
 30349-2998

ROY A. WILLIAMS, ARCHITECT
 750 OLD HICKORY BLVD, SUITE 250
 BRENTWOOD, TN 37027
 PHONE: 615.377.3111
 EMAIL: GENMAIL@EANDHARCH.COM

PROTOTYPICAL SET

NOT FOR
 REGULATORY
 APPROVAL,
 BIDDING, OR
 CONSTRUCTION

CHICK-FIL-A
 CHAPEL HILL U.P.LACE
 FSU
 UNIVERSITY PLACE
 CHAPEL HILL, NC 27514

FSR#04954

BUILDING TYPE / SIZE: P14 LS LRG
 RELEASE: 22.08

DESIGNED FOR
 DESIGN

REVISION SCHEDULE

NO. DATE DESCRIPTION

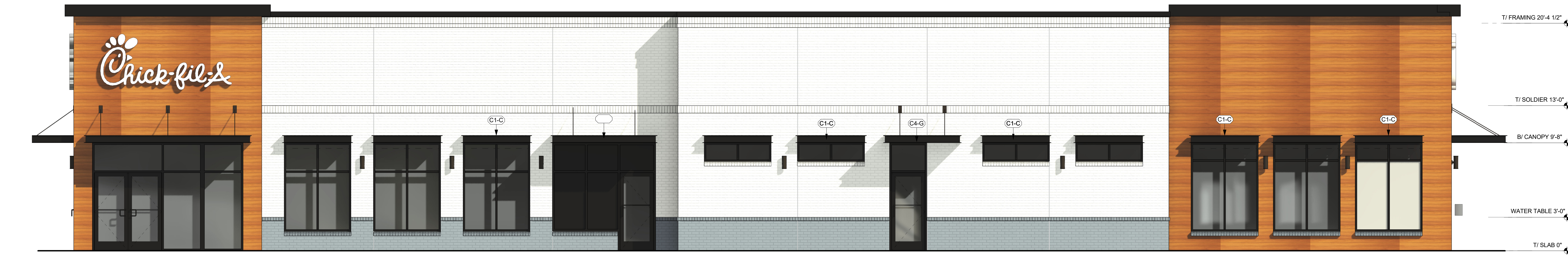
CONSULTANT PROJECT #
 DATE 12/5/2022

DRAWN BY: Author
 Information contained on this drawing and all digital files
 produced for above named project may not be reproduced in
 any manner without express written or verbal consent from
 authorized project representatives.

EXTERIOR ELEVATIONS
 COLOR

SHEET NUMBER

A-302



D4 EXTERIOR ELEVATION - EAST
 1/4" = 1'-0"



C4 EXTERIOR ELEVATION - WEST
 1/4" = 1'-0"



B4 EXTERIOR ELEVATION - SOUTH
 1/4" = 1'-0"



A4 EXTERIOR ELEVATION - NORTH
 1/4" = 1'-0"

ATTACHED CANOPY SCHEDULE						
Mark	Description	Count	Overall Width	Overall Depth	Tie Back Mounting (Offset From Top)	Integral Lighting
C1-C	Exterior Canopy	15	6'-4"	1'-0"	0"	No
C3-A	Exterior Canopy	2	<varies>	<varies>	2'-6"	Yes
C4-G	Exterior Canopy	1	7'-0"	4'-0"	2'-4"	Yes
C4-L	Exterior Canopy	2	15'-0"	4'-0"	2'-4"	Yes
Grand total		20				

GENERAL NOTES
 1. ALL SIGNAGE PROVIDED BY OTHERS
 2. REF FLOOR PLAN AND WINDOW LEGEND FOR STOREFRONT INFORMATION

CANOPY NOTES:
 BUILDING MOUNTED CANOPIES - 8" THICK CANOPY
 - KYNAR FINISH OF STRUCTURE, FASCIA, & DECKING TO MATCH (CP-1)
 COLUMN MOUNTED CANOPIES - 10" THICK CANOPY
 - FINISH OF STRUCTURE TO BE (CP-1)
 - FINISH OF DECKING TO BE (CP-2)

FINISH SCHEDULE - EXTERIOR							
MARK	DESCRIPTION	MANUFACTURER	MODEL NAME	MODEL NUMBER	COLOR	MORTAR: TBD	NOTE
BR-A	BRICK VENEER (PRIMARY)	US BRICK	MODULAR		BLUE BLACK VELOUR		MORTAR: TBD
BR-B	BRICK VENEER (ACCENT)	ACME	MODULAR		GLACIER WHITE		MORTAR: TBD
CM-1	WOOD COMPOSITE MATERIAL	RESYSTA INTERNATIONAL	FACADE CLADDING 7CH	RESP340812	C02, PALE GOLDEN		
CP-1	CANOPY METAL FASCIA		DURA COAT	DC19ST-2703	BLACK		OIL RUBBED BRONZE METALLIC TEXTURE PVD
CP-2	CANOPY METAL DECK				WHITE		SMOOTH WHITE, HIGH GLOSS
EC-1	PARAPET WALL COPING	DUROLAST / EXCEPTIONAL METALS			COAL BLACK		
PT-100	EXTERIOR PAINT	SHERWIN WILLIAMS	SHER-CRYL HIGH PERFORMANCE ACRYLIC #B66-350	SW 2807	IRON ORE		REFUSE ENCLOSURE, FINISH: SEMI-GLOSS ON DOOR FRAMES, SATIN ON WALLS
PT-113	EXTERIOR PAINT	SHERWIN WILLIAMS	SHER-CRYL HIGH PERFORMANCE ACRYLIC #B66-350		IRON ORE		FINISH: SEMI-GLOSS
ST-1	STOREFRONT	YKK	YES 45		BLACK ANODIZED		

EXTERIOR FINISHES

(BR-A)
BRICK VENEER
COLOR: DARK GRAY
SIZE: MODULAR

(BR-B)
BRICK VENEER
COLOR: WHITE
SIZE: MODULAR

(WD-5)
WOOD LOOK PHENOLIC PANEL
COLOR: RUSTIK

(EC-1)
PREFINISHED METAL COPING
COLOR: MIDNIGHT BRONZE

(PT-113)
EXTERIOR PAINT
COLOR: DARK BRONZE
FINISH: SEMI-GLOSS

(ST-1)
STOREFRONT
COLOR: DARK BRONZE

11/22/2022 2:05:50 PM Autodesk Docs://NC_04954_Chapel Hill University Place_2021.8_FSR#04954_Chapel Hill University Place_ARC.rvt
 10-LS-04954-A-302-EXTERIOR ELEVATIONS COLOR

11/22/2022 2:06:00 PM Autodesk Docs://NC_04954_Chapel Hill University Place_ARC.rvt 10-LS-04954-A-303-TRANSPARENCY CALCULATIONS



Chick-fil-A
5200 Buffington Road
Atlanta, Georgia
30349-2998

ROY A. WILLIAMS, ARCHITECT
750 OLD HICKORY BLVD, SUITE 250
BRENTWOOD, TN 37027
PHONE: 615.377.3111
EMAIL: GENMAIL@EANDHARCH.COM

PROTOTYPICAL SET

NOT FOR
REGULATORY
APPROVAL,
BIDDING, OR
CONSTRUCTION

CHICK-FIL-A
CHAPEL HILL U.PLACE
FSU
UNIVERSITY PLACE
CHAPEL HILL, NC 27514

FSR#04954

BUILDING TYPE / SIZE: P14 LS LRG
RELEASE: 22.08

PRINTED FOR
DESIGN

REVISION SCHEDULE		
NO.	DATE	DESCRIPTION

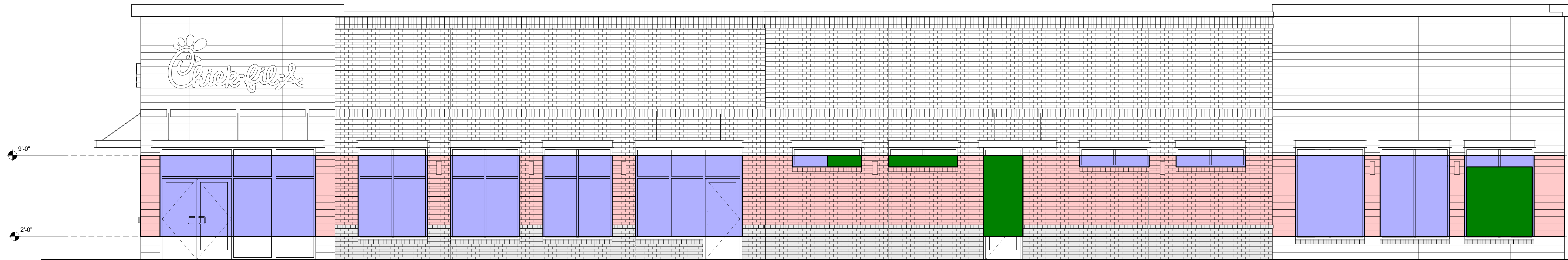
CONSULTANT PROJECT # ###
DATE 12/5/2022

DRAWN BY Author
Information contained on this drawing and in all digital files produced for above named project may not be reproduced in any manner without express written or verbal consent from authorized project representatives.

TRANSPARENCY CALCULATIONS

SHEET NUMBER

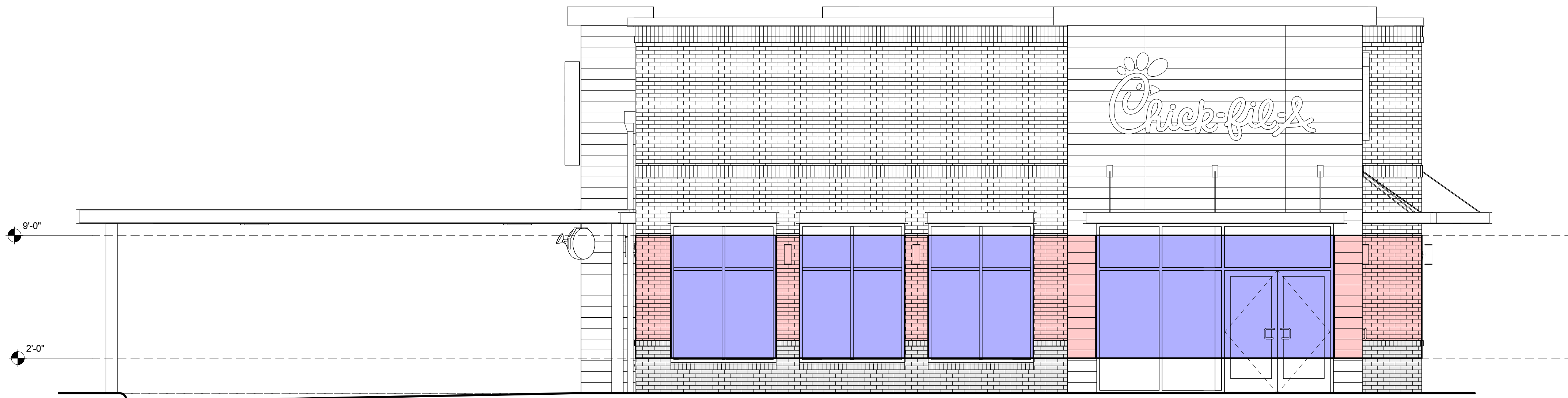
A-303



AREA BETWEEN 2' & 9' 864.65 SF
53% GLAZING (459.18 SF)
(50% GLAZING REQUIRED)

86% OF WINDOWS HAVE 6' + DEPTH
(60% REQUIRED)

C4 EXTERIOR ELEVATION - TRANSPARENCY CALCULATIONS EAST
1/4" = 1'-0"



AREA BETWEEN 2' & 9' 313.76 SF
70% GLAZING (220.72 SF)
(50% GLAZING REQUIRED)

100% OF WINDOWS HAVE 6' + DEPTH
(60% REQUIRED)

B4 EXTERIOR ELEVATION - TRANSPARENCY CALCULATIONS SOUTH
1/4" = 1'-0"