



Fordham Boulevard Sidepath Alternative Designs

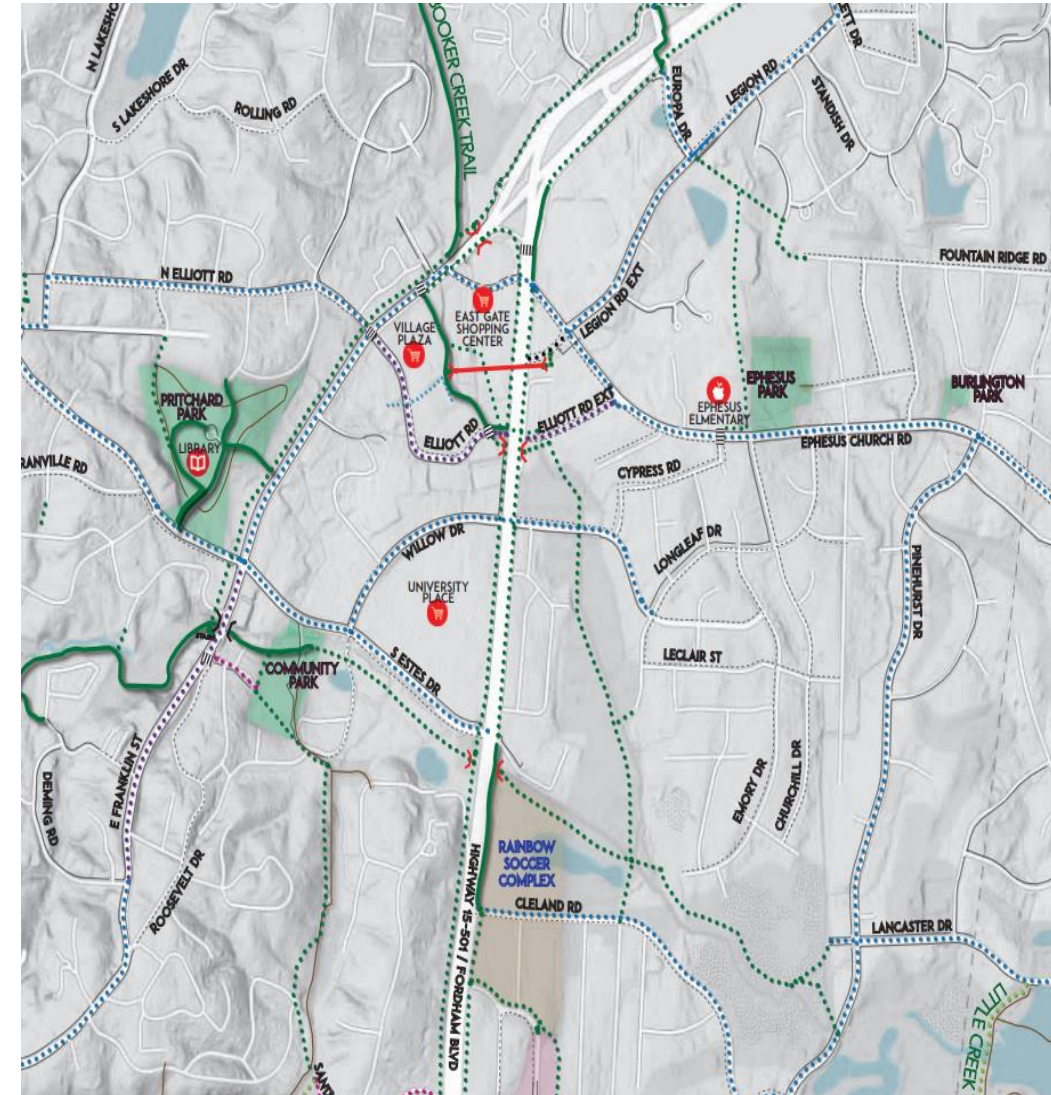
Transportation and Connectivity Advisory Board
December 17, 2019

Background

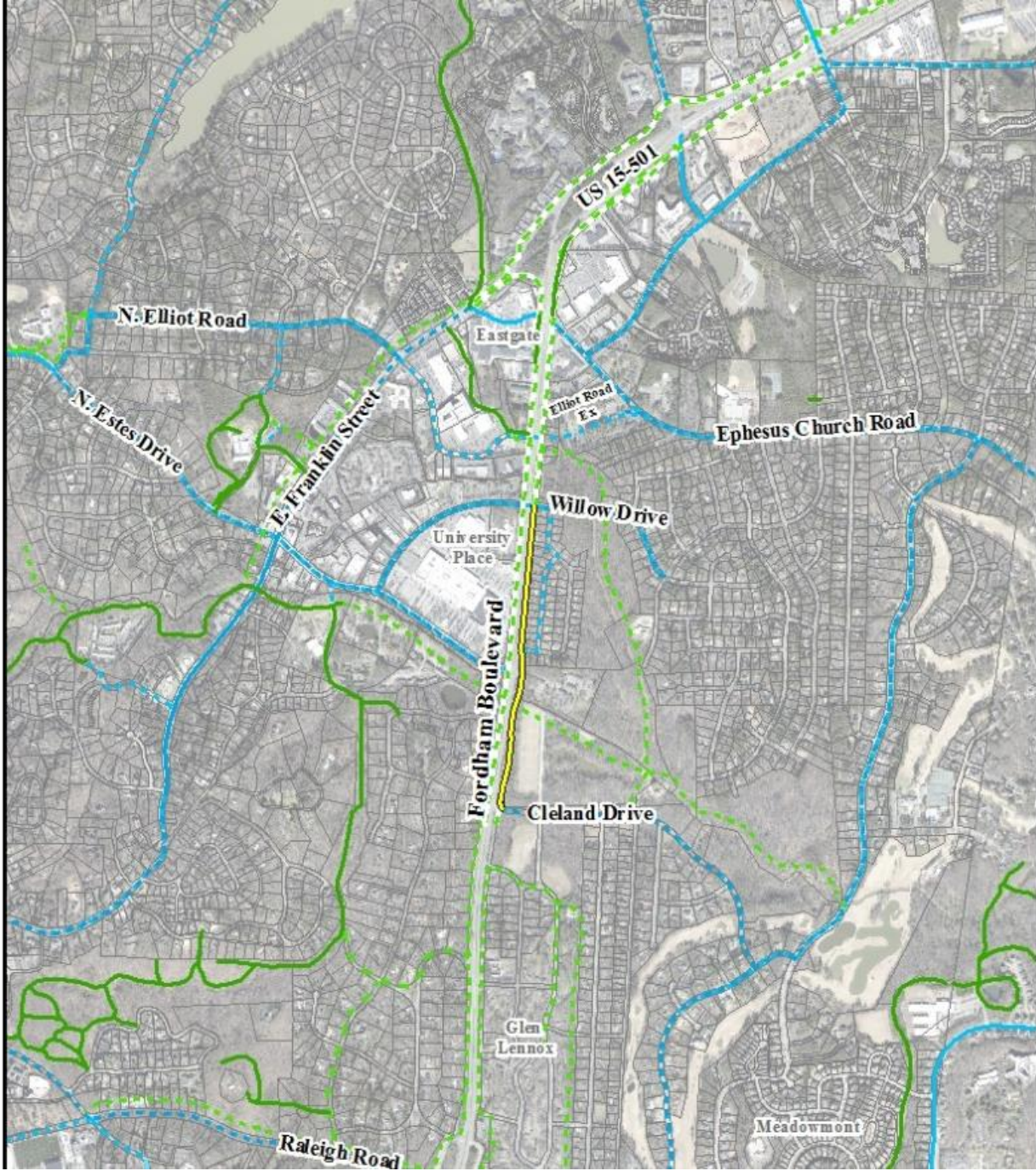
- Originally a Safe Routes to School project (2016)
- Two part project scope:
 - Upgrade existing path from Cleland to Ridgefield
 - Construct new path from Ridgefield to Willow
- Project budget - \$1,058,000 (80% federal/20% local)

Public Engagement

- August 2018 – first public meeting
- January 2019 – neighborhood meeting
- February 2019 – TCAB meeting
- September 2019 – second public meeting
- October 2019 – TCAB meeting



existing and proposed **greenways** and **on-road bicycle** connections with proposed **sidepath**



Legend

- Town Project: improve and extend sidepath
- Planned Fordham Sidepath Network
- Existing Bike Lane
- Existing Greenway
- Proposed Bike Lane
- Proposed Greenway



Design Alternatives

MATCHLINE - SEE SHEET 1

RIDGEFIELD ROAD

WILLOW DRIVE

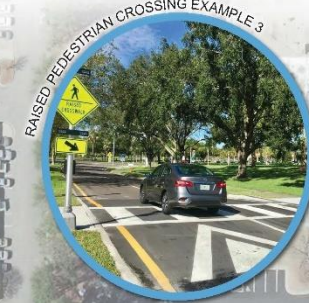
WILLOW DRIVE



RAISED PEDESTRIAN CROSSING EXAMPLE 1



RAISED PEDESTRIAN CROSSING EXAMPLE 2



RAISED PEDESTRIAN CROSSING EXAMPLE 3

SOUTHERN SEASON

K&W CAFETERIA

OLIN T BINKLEY MEMORIAL BAPTIST CHURCH

PROPOSED GREENWAY

END OF GREENWAY PROJECT

RAISED PEDESTRIAN CROSSING (SEE IMAGES)

EXISTING RIGHT-OF-WAY
PROPOSED BUFFER LANDSCAPING

VEGETATED SHOULDER
EXISTING WOOD FENCE TO REMAIN

REDUCED RADIUS FOR RIGHT TURN (SEE DETAIL)

EXISTING VEGETATION TO REMAIN
RAISED PEDESTRIAN CROSSING (SEE IMAGES)

FORDHAM BLVD (US HIGHWAY 15/501)

LITTLE RIDGEFIELD NEIGHBORHOOD

PROPERTY LINE (TYP)

HICKORY DRIVE

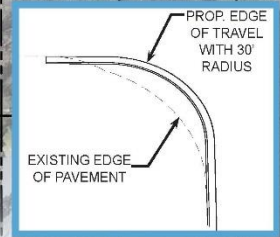
HICKORY DRIVE

WALNUT STREET



Kimley»Horn

REDUCED TURN RADIUS DETAIL



Planting Legend

- Ornamental Trees
- Evergreen Screen

Fordham Boulevard Multi-Use Path Map

Option 1 / Sheet 2
September 2019





SOUTHERN SEASON



K&W CAFETERIA

OLIN T BINKLEY MEMORIAL BAPTIST CHURCH



MATCHLINE - SEE SHEET 1

AT GRADE STREETPRINT PEDESTRIAN CROSSING (SEE IMAGES)

EXISTING WOOD FENCE TO REMAIN
EXISTING RIGHT-OF-WAY

VEGETATED SHOULDER PROPERTY LINE (TYP)

PROPOSED GREENWAY

FORDHAM BLVD (US HIGHWAY 15/501)

PROPOSED BUFFER LANDSCAPING

AT GRADE STREETPRINT PEDESTRIAN CROSSING (SEE IMAGES)

END OF GREENWAY PROJECT AT WILLOW DRIVE

EXISTING VEGETATION TO REMAIN

RIDGEFIELD ROAD

HICKORY DRIVE

WALNUT STREET

HICKORY DRIVE

WILLOW DRIVE



Kimley»Horn

LITTLE RIDGEFIELD NEIGHBORHOOD

Planting Legend

-  Ornamental Trees
-  Evergreen Screen
- 

Fordham Boulevard Multi-Use Path Map
Option 2 / Sheet 2
September 2019



Summary of Public Input

Path Along Fordham

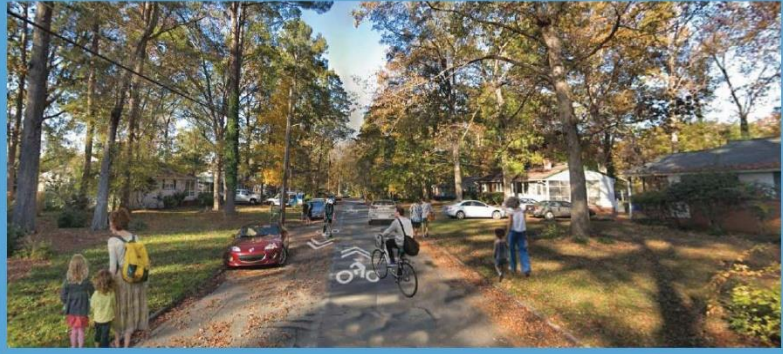
Pros:

- Direct route
- Improved connectivity/mobility for users
- Part of larger network
- Fewer hazards for cyclists (no turns on wet roads)
- Raised crosswalks, safer
- Safe space for pedestrians
- Reduces overall traffic
- Encourages alternative transportation

Cons:

- Loss of vegetative buffer
- Tree removal
- Pollution (noise, air, light) for neighbors
- Users exposed to pollution on Fordham
- Unsafe crossings at side streets
- Path close to backyards, behind houses
- Redundant to path on west side of Fordham

GREENWAY VISUALIZATION AT HICKORY DRIVE



MATCHLINE - SEE SHEET 1

SOUTHERN SEASON

K&W CAFETERIA

OLIN T BINKLEY MEMORIAL BAPTIST CHURCH

WILLOW DRIVE

EXISTING VEGETATION TO REMAIN

FORDHAM BLVD (US HIGHWAY 15/501)

EXISTING WOOD FENCE TO REMAIN

PROPOSED GREENWAY ROUTE

EXISTING RIGHT-OF-WAY

10' WIDE CONCRETE GREENWAY

PROPERTY LINE (TYP)

END OF GREENWAY PROJECT

HICKORY DRIVE

WALNUT STREET

HICKORY DRIVE

WILLOW DRIVE

RIDGEFIELD ROAD



Kimley»Horn

LITTLE RIDGEFIELD NEIGHBORHOOD

Fordham Boulevard Multi-Use Path Map
Option 3 / Sheet 2
September 2019



SOUTHERN SEASON

GREENWAY-VISUALIZATION AT HICKORY DRIVE



K&W
CAFETERIA

OLIN T BINKLEY
MEMORIAL BAPTIST
CHURCH



FORDHAM BLVD (US HIGHWAY 15/501)

EXISTING VEGETATION TO REMAIN

PROPERTY LINE (TYP)

PROPOSED GREENWAY
ROUTE

END OF GREENWAY PROJECT
AT WILLOW DRIVE

EXISTING RIGHT-OF-WAY
NO PARKING ON RIDGEFIELD ROAD
GREENWAY TRANSITIONS TO
SHARROWS AT HICKORY DRIVE

HICKORY DRIVE

HICKORY DRIVE

AT GRADE STREETPRINT
PEDESTRIAN CROSSING (SEE
IMAGES)

BIKE SHARROW
6' WIDE CONCRETE
SIDEWALK AT BACK
OF CURB

PARKING ON WEST SIDE
OF HICKORY DRIVE ONLY

NO PARKING ON
WALNUT STREET

AT GRADE STREETPRINT
PEDESTRIAN CROSSING
(SEE IMAGES)

LITTLE RIDGEFIELD
NEIGHBORHOOD

Fordham Boulevard
Multi-Use Path Map

Option 4 / Sheet 2

September 2019



MATCHLINE - SEE SHEET 1

RIDGEFIELD ROAD

WALNUT STREET

WILLOW DRIVE



Kimley >> Horn

Summary of Public Input

Shared Street along Hickory

Pros:

- Maintains vegetative buffer
- “Already works”
- Lease expensive
- Option with sidewalk is safer
- Reduces crossing conflicts

Cons:

- Doesn't improve connectivity
- Not as direct, circuitous
- Unsafe – too many driveways, road floods frequently
- All modes in street = unsafe
- Potential to lose federal funding
- No sidewalk – not ADA compliant