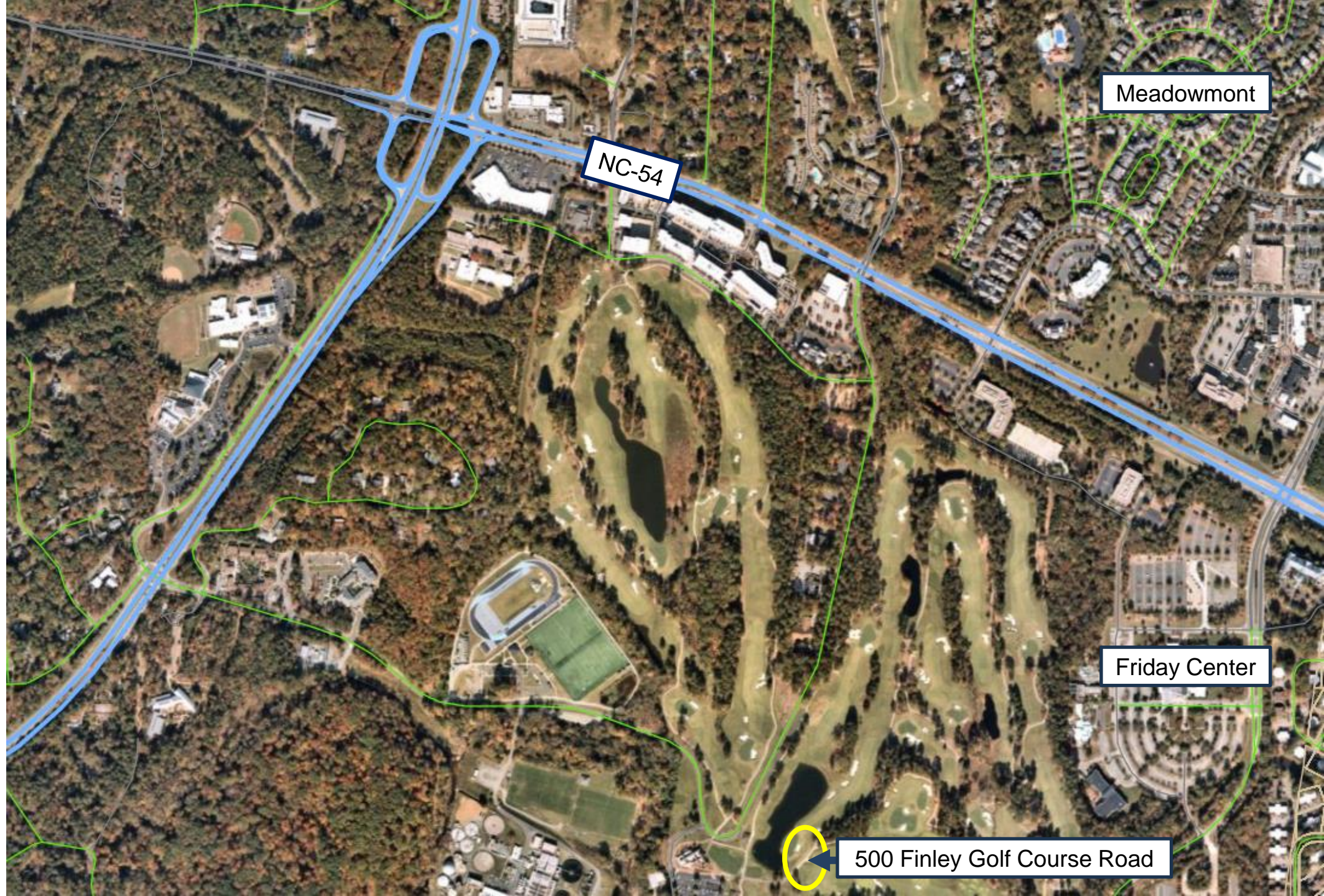


Special Use Permit: 500 Finley Golf Course Road



**Town Council Meeting
January 29, 2025**

DRAFT



DRAFT

Recommended Council Action

- Open the Evidentiary Hearing
- Receive evidence
- Close the Evidentiary Hearing
- Consider approving the SUP (R-#)

DRAFT

Summary

- Finley Golf Course is used by the public and the UNC golf team
- One golf team facility is currently on the site
- UNC proposes to build an additional training facility

DRAFT

Quasi-Judicial Proceedings

- SUP is needed because land disturbance exceeds 40,000 sq. ft.
- Modifications to LUMO standards are permitted
- Approval is solely based on 4 findings of fact

DRAFT

Findings of Fact

- 1) Maintains or promotes public health, safety, and welfare
- 2) Complies with all LUMO regulations and standards
- 3) Maintains or enhances the value of contiguous property
- 4) Conforms to general plans for development, especially LUMO and Comprehensive Plan

DRAFT

Modifications to Regulations

Tree Canopy Coverage

- Required: 40% of parcel
- Requested: 30% of project area

Landscaped Buffers

- Required: Type B buffer
- Requested: No buffer

DRAFT

Modifications to Regulations

Vehicular Parking Spaces

- Required: 1 space per 715 sq. ft.
- Requested: 1 space per 1,000 sq. ft.

Bike Parking Spaces

- Required: 13 spaces
- Requested: 6 spaces

DRAFT

Recommended Council Action

- Open the Evidentiary Hearing
- Receive evidence
- Close the Evidentiary Hearing
- Consider approving the SUP (R-#)

DRAFT