

# Chapel Hill's Southern ETJ

## Opportunities and Constraints

---

Chapel Hill Town Council

April 29, 2026

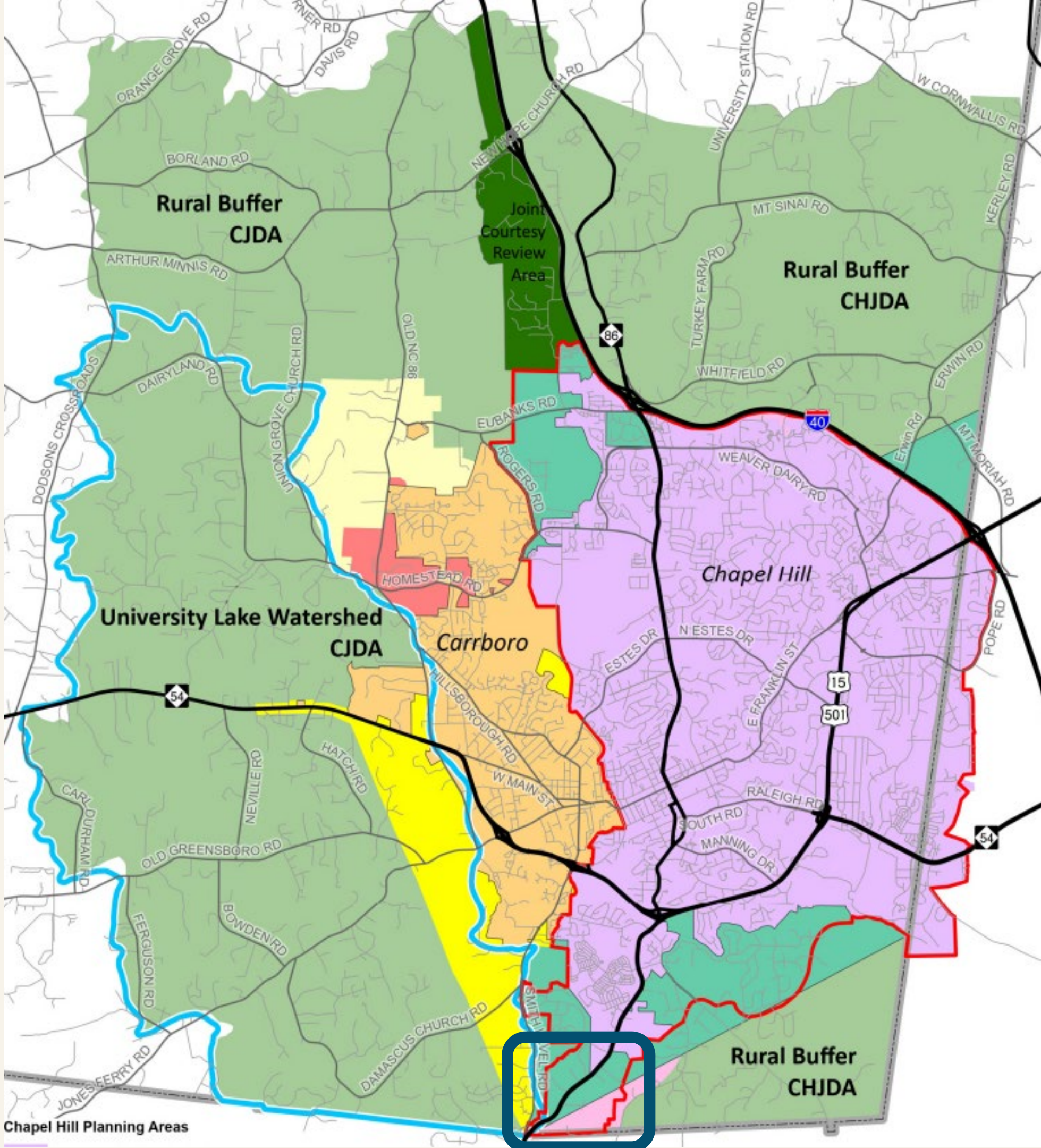


TOWN OF  
**CHAPEL  
HILL**

# Agenda

- Brief History of WASMPBA
- Development Potential
- Sewer Alignment Study

This discussion focuses on the portion of the Southern ETJ between South Creek/Southern Village and the Chatham County line.



**The WASMPBA expansion opened the door for local planning.**

**New development will face significant environmental and economic constraints.**

**Expanding sewer service is feasible, but very expensive.**

**Opportunities for missing middle housing are limited.**

**WASMPBA**

# WASMPBA

## Basics

- “Water and Sewer Management Planning and Boundary Agreement”
- Defines OWASA’s service area
- Amendments to the service area require approval from:
  - Chapel Hill
  - Carrboro
  - Hillsborough
  - Orange County
  - OWASA

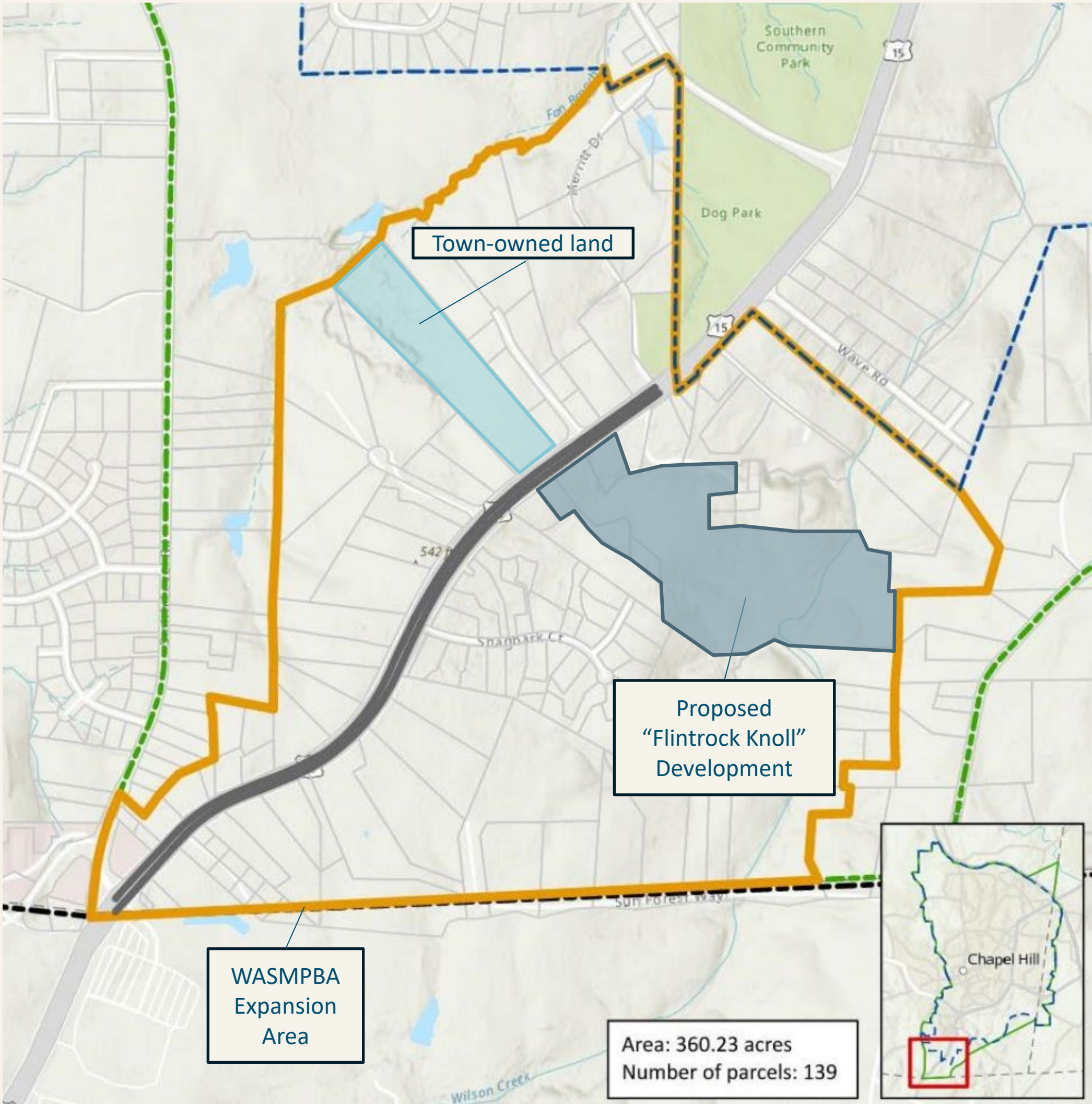
# WASMPBA Expansion

- In 2023, the Chamber for a Greater Chapel Hill-Carrboro petitioned Council to expand the OWASA service area.
- All jurisdictions approved an expansion of the OWASA service area in 2023-24.

**+ 360  
Acres**

**+ 139  
Parcels**

# WASMPBA Expansion Area



# Development Potential

# Development Potential

- In 2023, Town staff estimated a density of **3 to 6 units per acre** across the entire WASMPBA expansion area to inform OWASA capacity analysis.
- At their March 12 meeting, the OWASA Board asked the Town Council to clarify the level of density it expects in the WASMPBA expansion area.
- **Town staff find that the original estimates for the area are reasonable.**
- **Because of environmental and economic constraints, we are likely to see distinct pockets of higher-density development.**

# Density Assumptions

**3 – 6 units per acre**

**X**

**360 acres**

**≈**

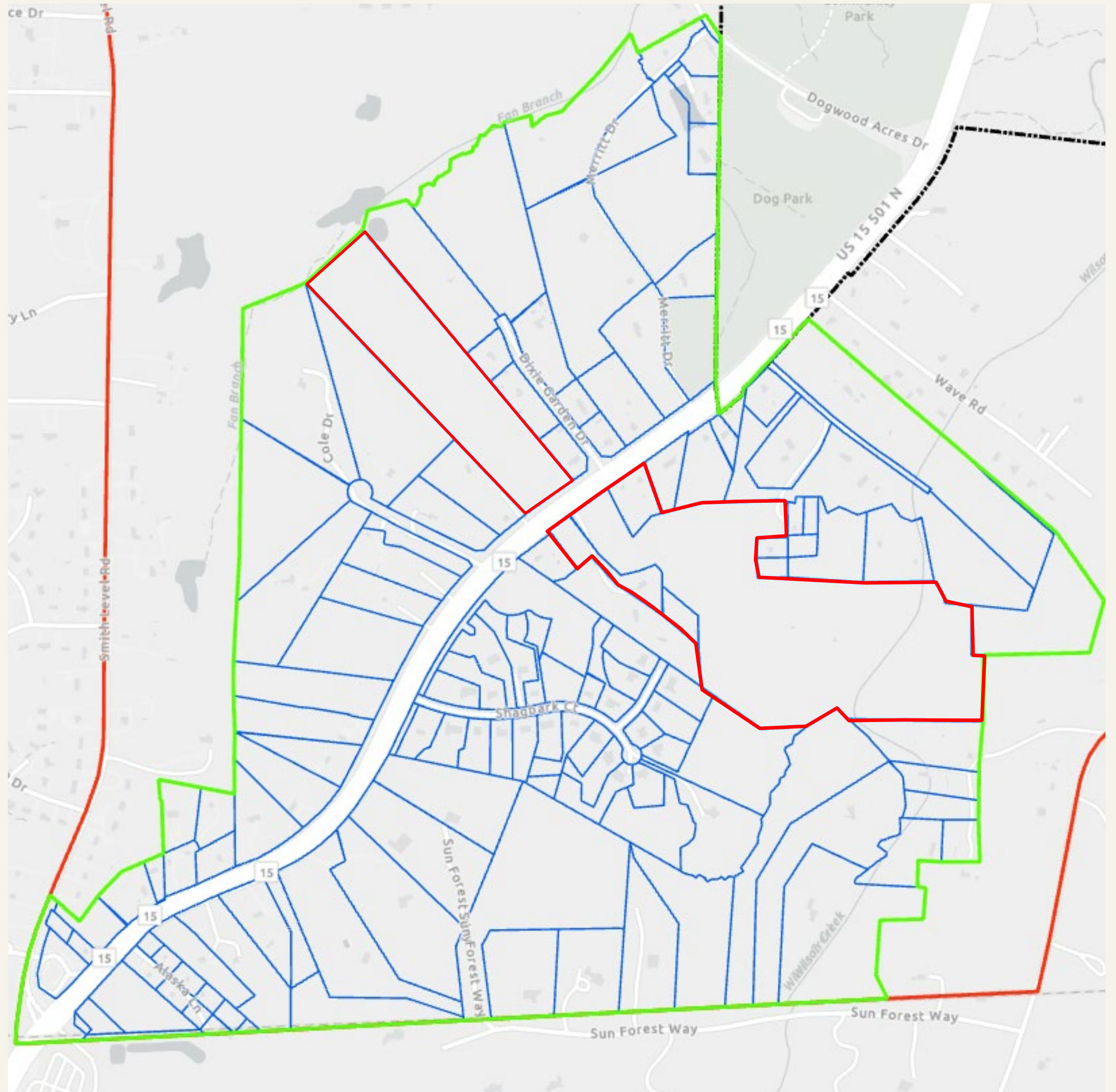
**1,100 – 2,200 units**

# Available Land

Total Acreage	360
---------------	-----

## Density

Min w/ 1,100 units	Max w/ 2,200 units
3 units/acre	6 units/acre

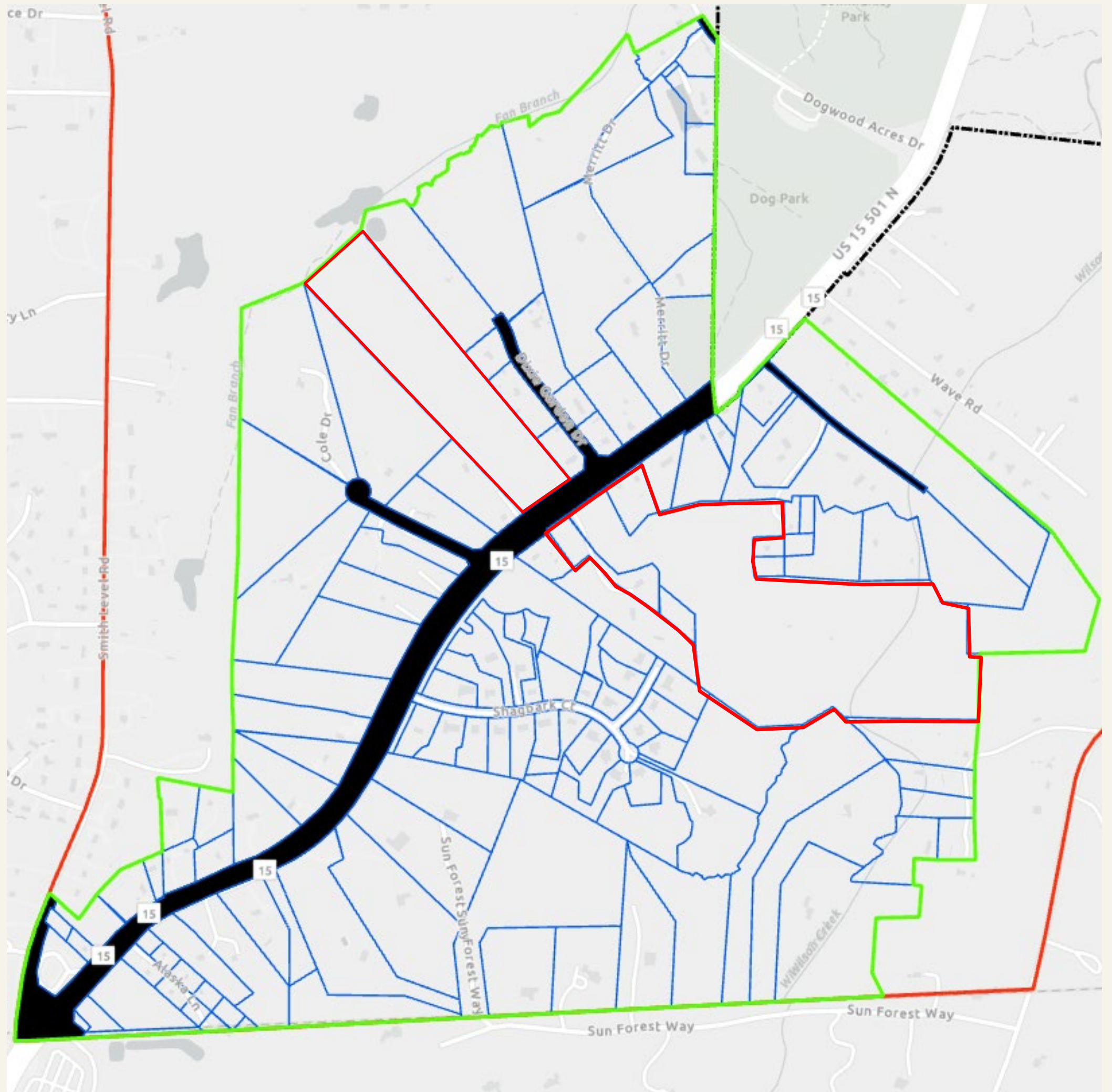


# Available Land

Total Acreage	360
Right of Way	(18.6)

# Density

Min	Max
w/ 1,100 units	w/ 2,200 units
3.4 units/acre	4.4 units/acre

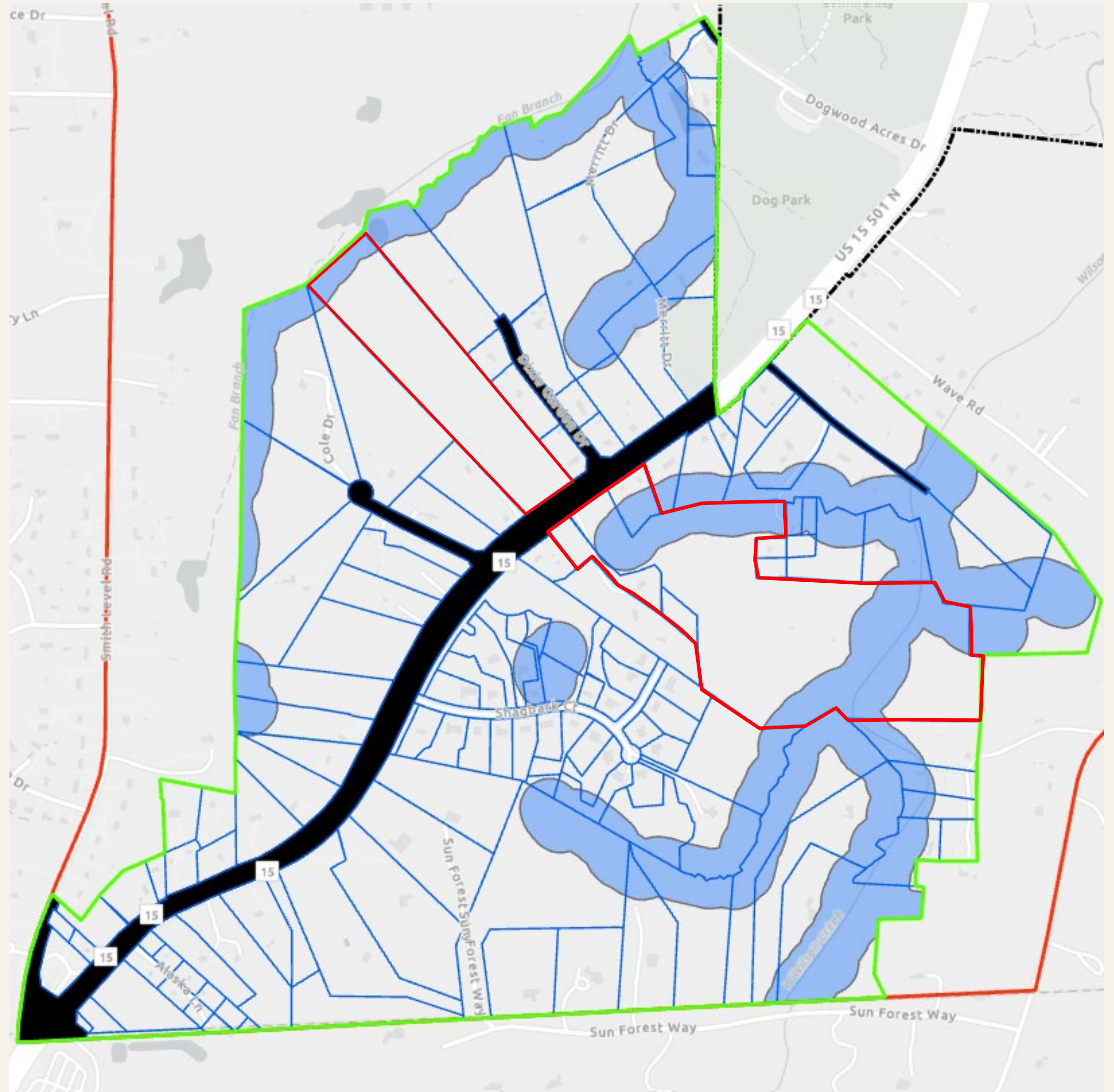


# Available Land

Total Acreage	360
Right of Way	(18.6)
Perennial Stream Buffers	(85.5)

# Density

Min w/ 1,100 units	Max w/ 2,200 units
5 units/acre	9 units/acre

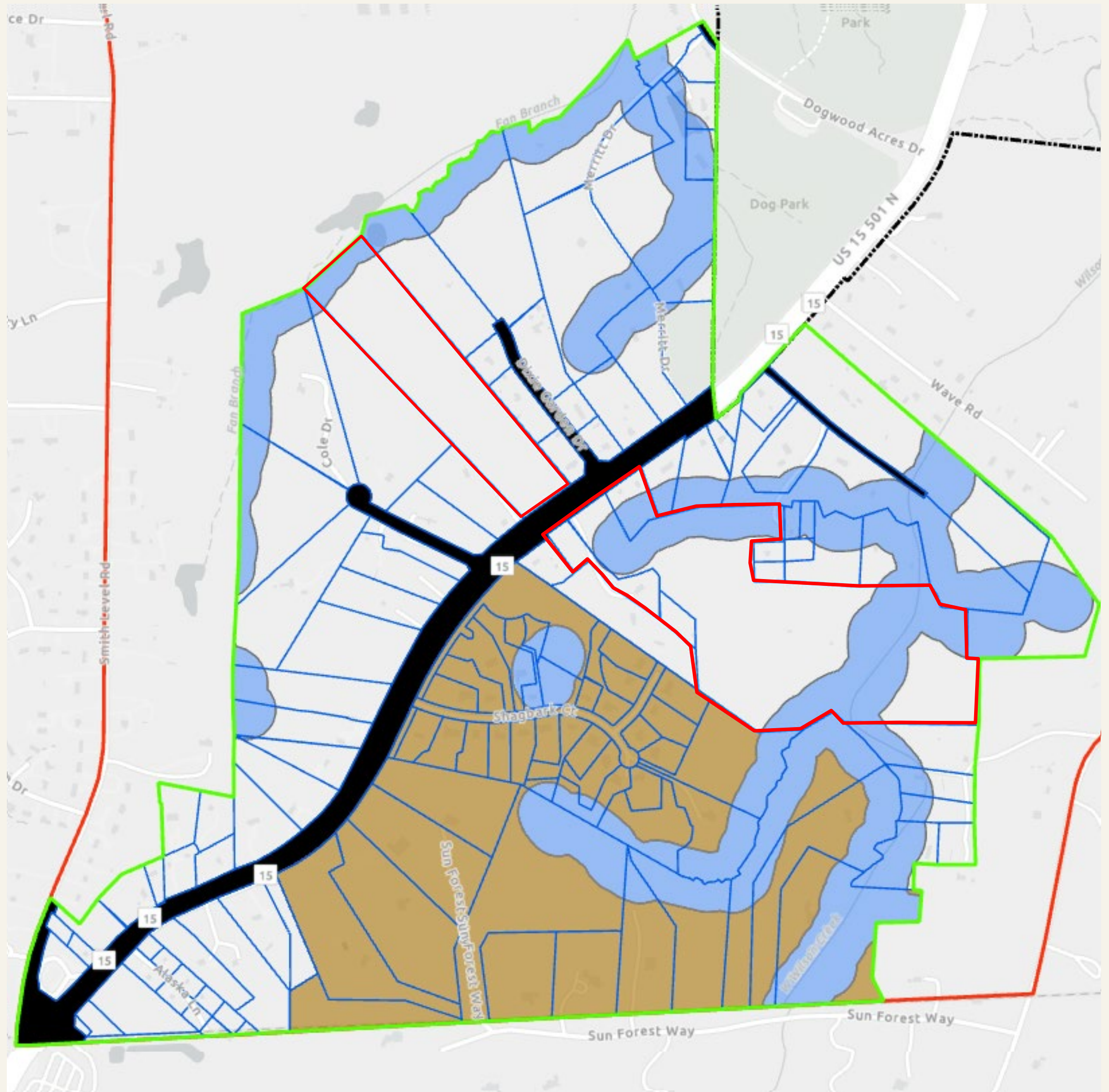


# Available Land

Total Acreage	360
Right of Way	(18.6)
Perennial Stream Buffers	(85.5)
Sun Forest and Shagbark	(86.4)

# Density

Min w/ 1,100 units	Max w/ 2,200 units
7 units/acre	13 units/acre



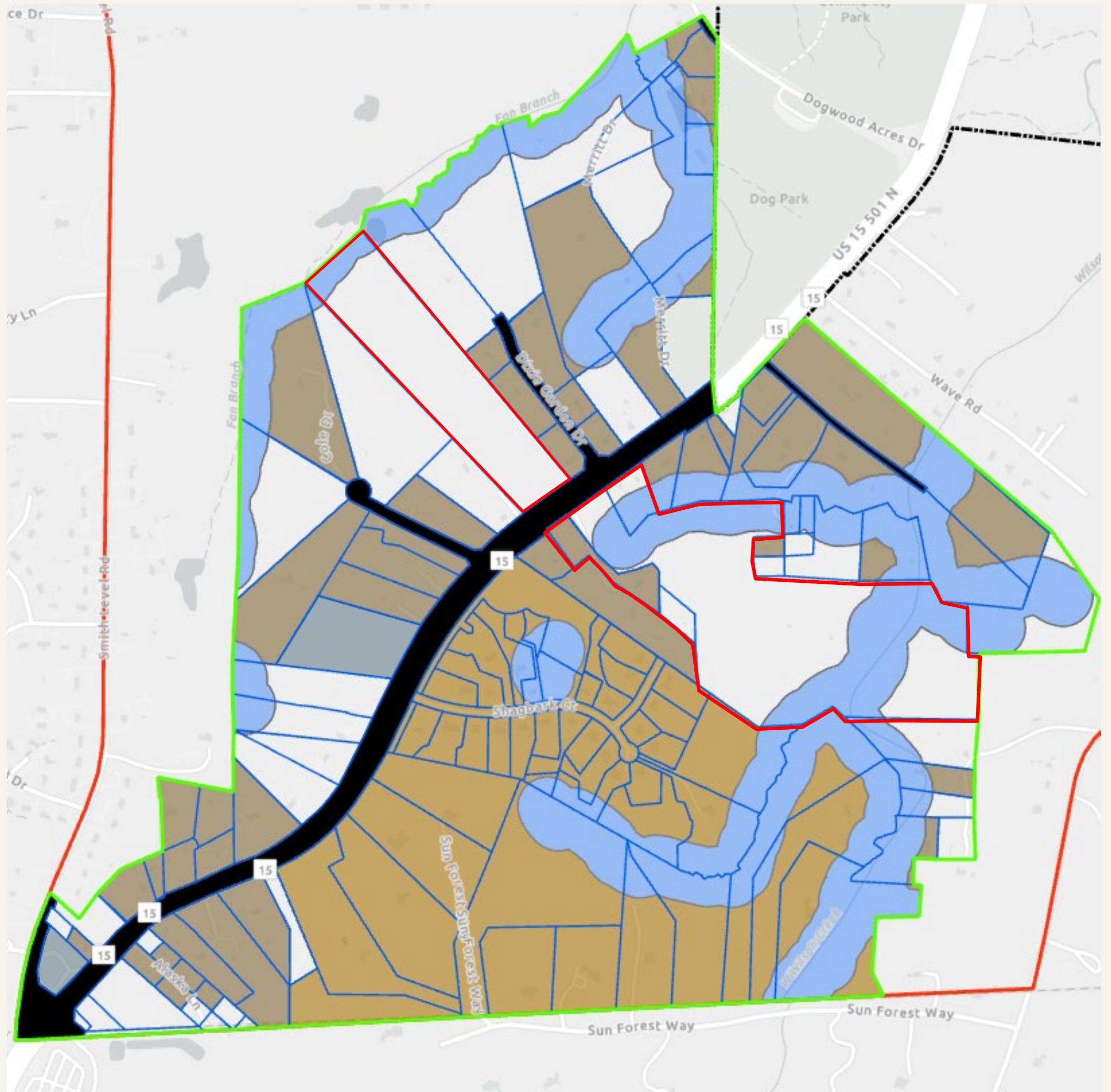


# Available Land

<b>Total Acreage</b>	<b>360</b>
Right of Way	(18.6)
Perennial Stream Buffers	(85.5)
Sun Forest and Shagbark	(86.4)
Higher Value Buildings	(75)
Misc. Unlikely to Redevelop	(5.5)

# Density

<b>Min</b>	<b>Max</b>
w/ 1,100 units	w/ 2,200 units
12 units/acre	25 units/acre

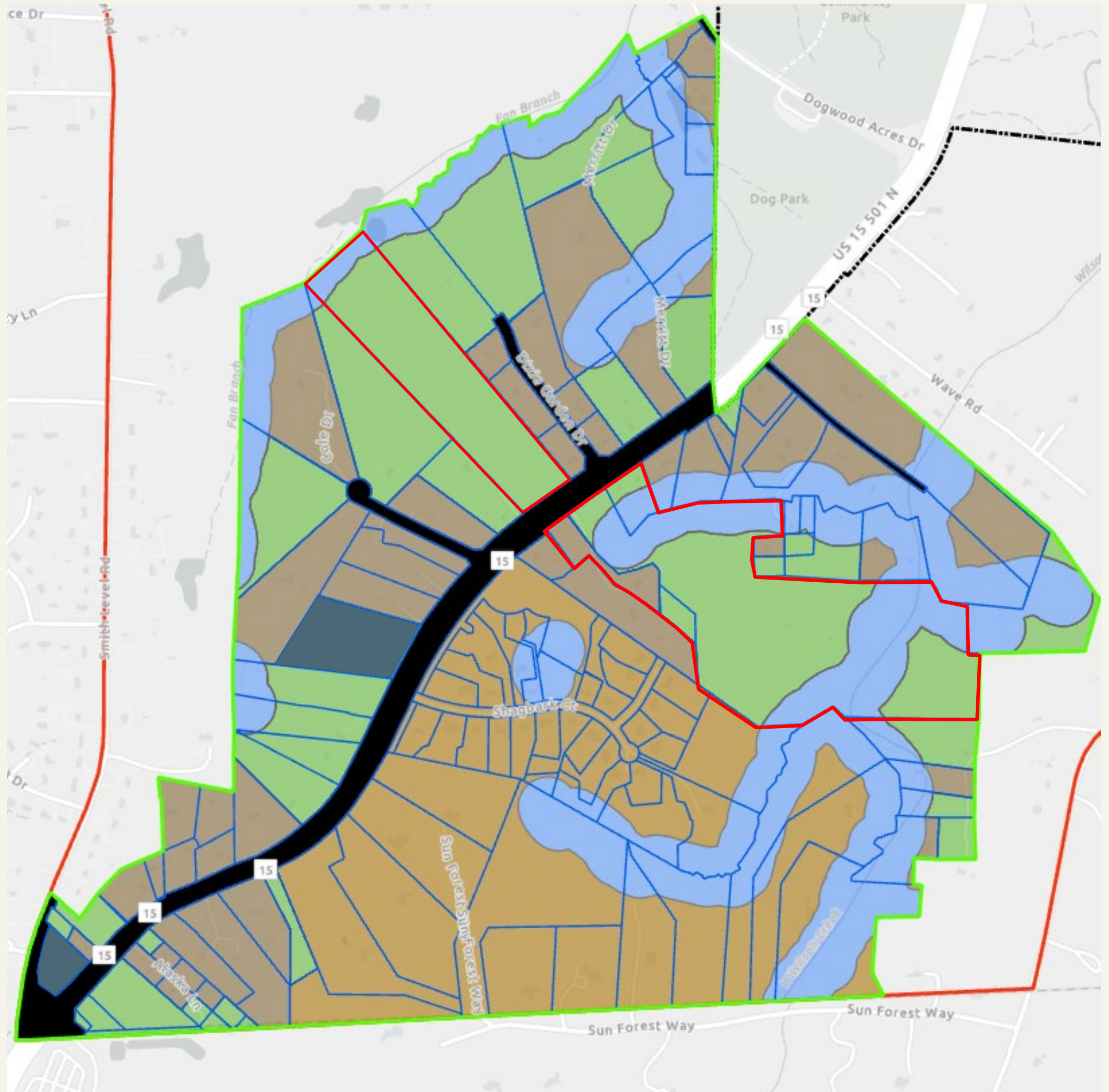


# Available Land

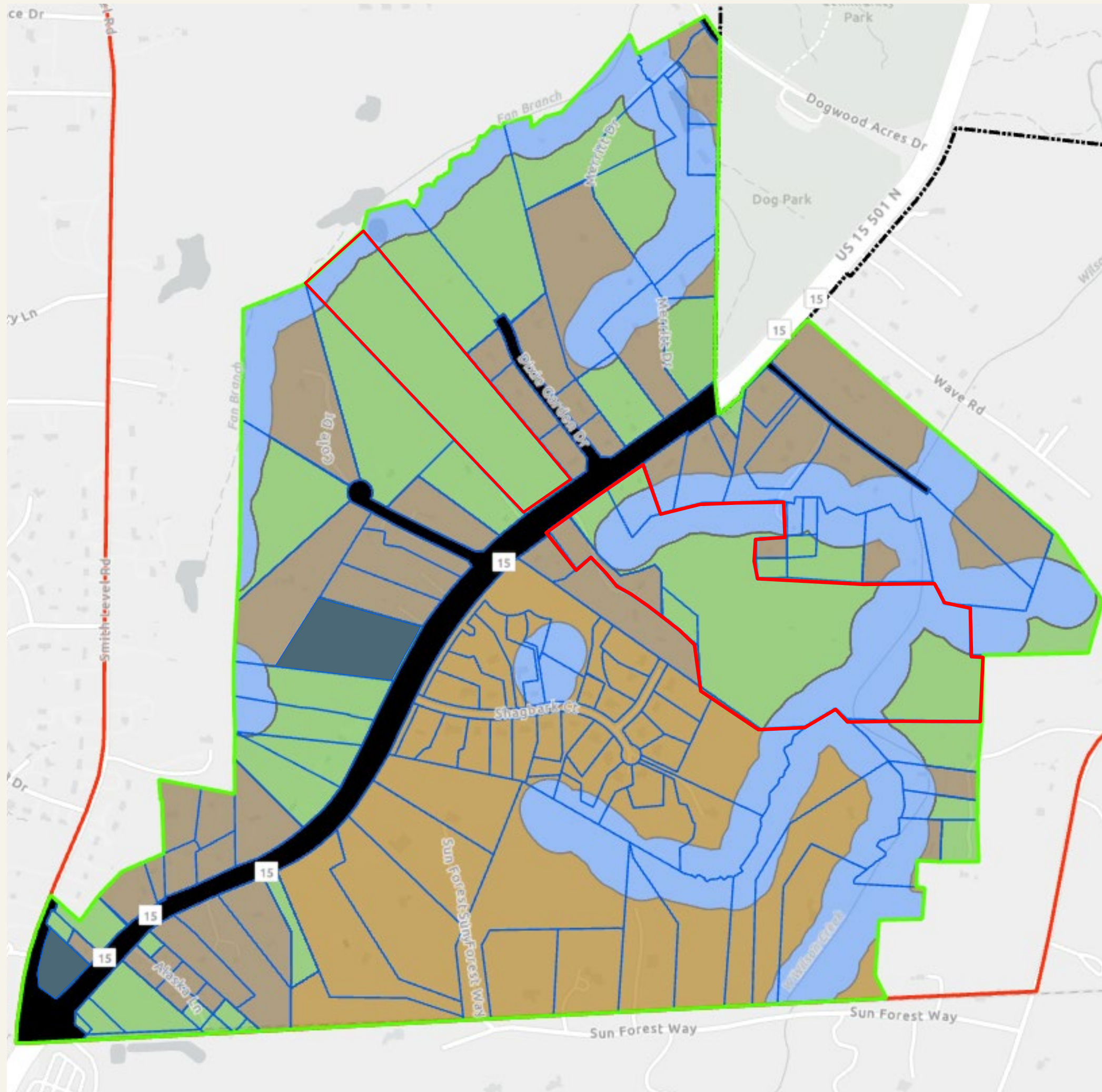
<b>Total Acreage</b>	<b>360</b>
Right of Way	(18.6)
Perennial Stream Buffers	(85.5)
Sun Forest and Shagbark	(86.4)
Higher Value Buildings	(75)
Misc. Unlikely to Redevelop	(5.5)
<b>Development Potential</b>	<b>89 acres</b>

# Density

<b>Min</b>	<b>Max</b>
w/ 1,100 units	w/ 2,200 units
12 units/acre	25 units/acre



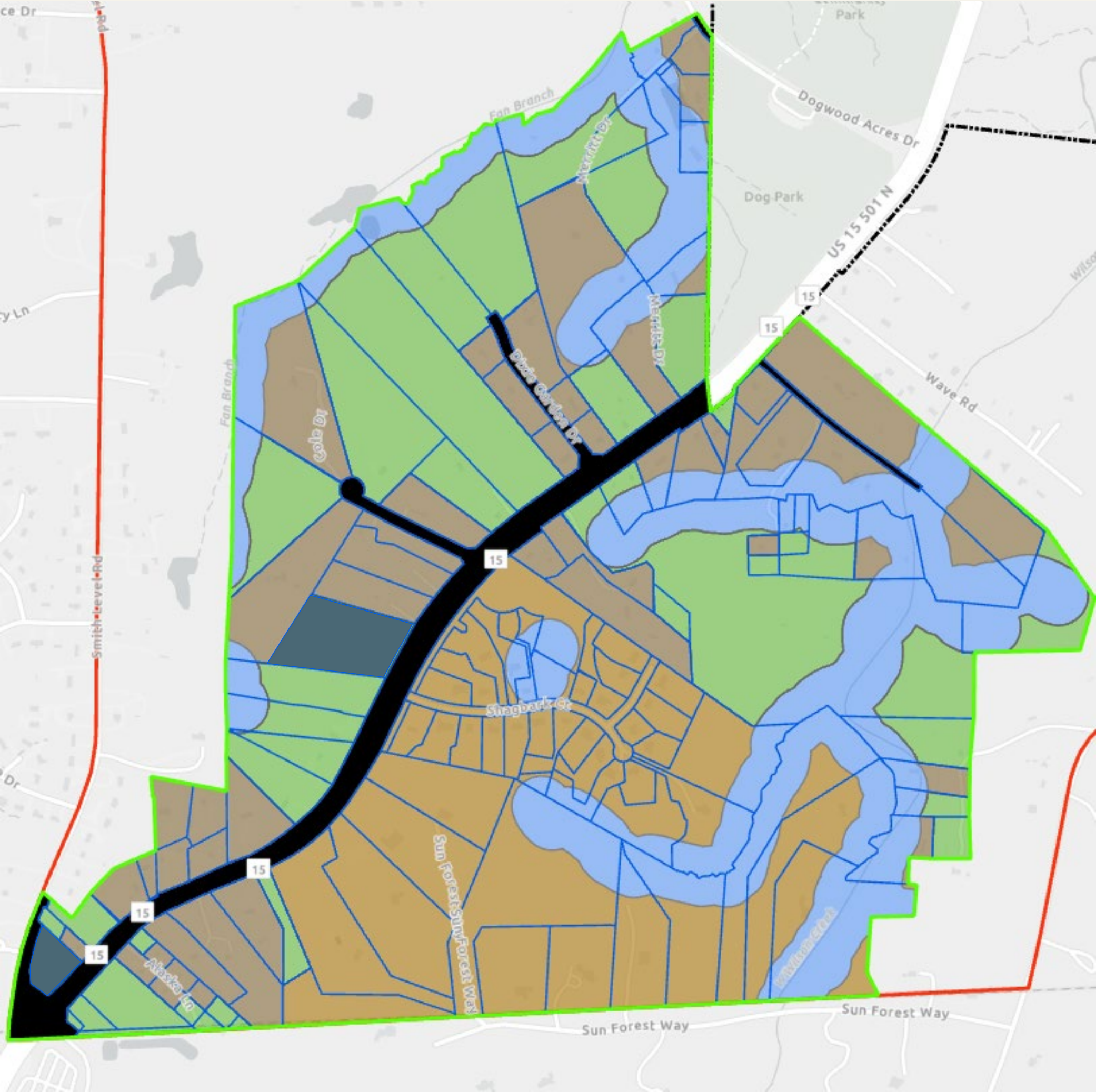
Density estimates for the area are reasonable.



We are likely to see distinct pockets of development in the WASMPBA expansion area.

These developments will need to be dense enough to support the high upfront costs of expanding sewer infrastructure.

They should also generate enough revenue to make the expansion of infrastructure and services financially sustainable.



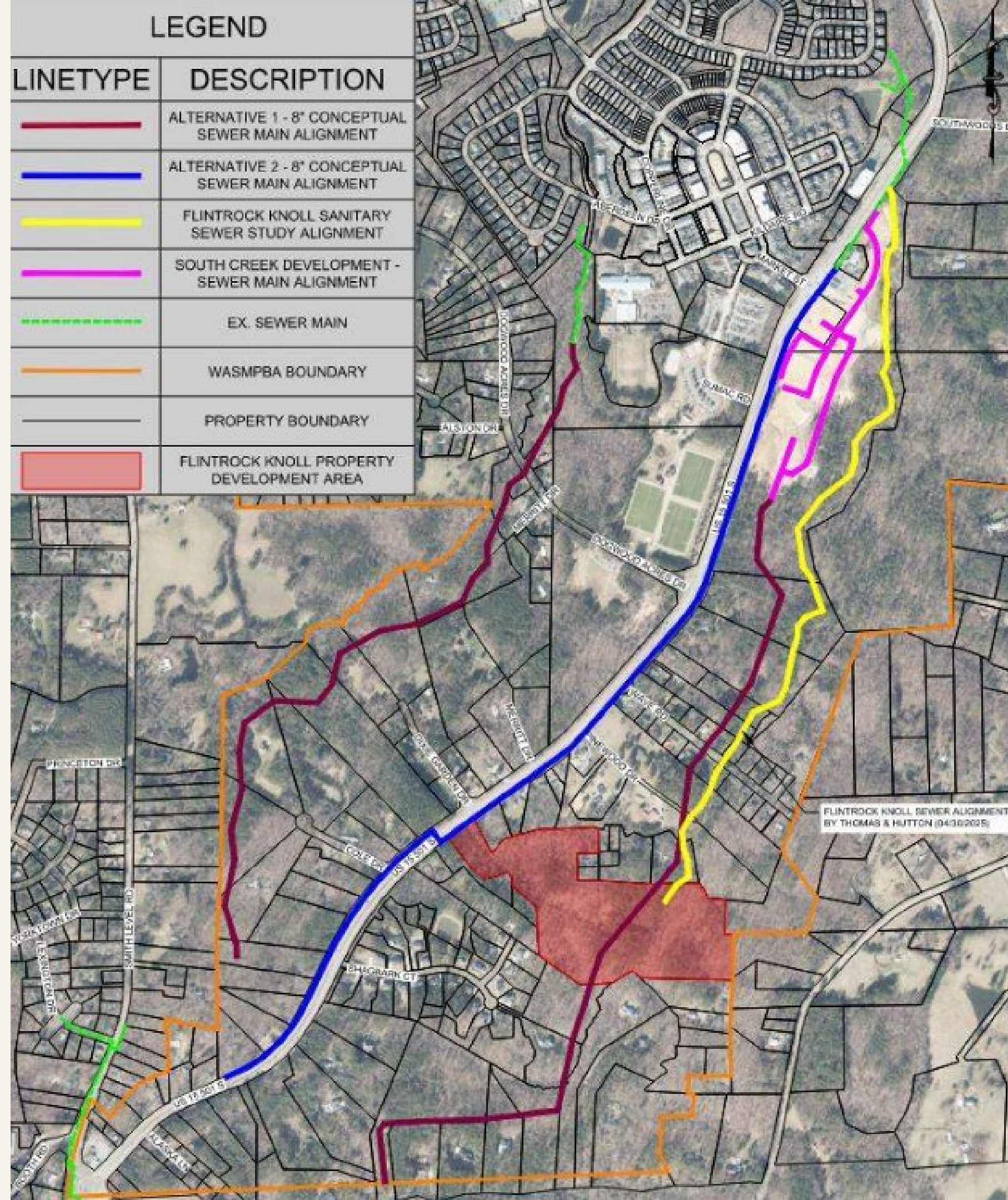
# Sewer Alignment Study

# Sewer Alignment Study

OWASA and Town staff collaborated to identify potential sewer alignments in the WASMPBA expansion area.

Expanding sewer infrastructure is feasible, but very expensive.

# Sewer Alignment Alternatives



## Preferred Alignment

### The “creekside” alignment is the preferred option.

- 50% lower total costs
- Able to reach 75% of the service area with gravity sewer
- Avoids RCD buffers to the maximum practical extent
- Significant number of private easements required.

## Takeaways

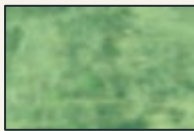
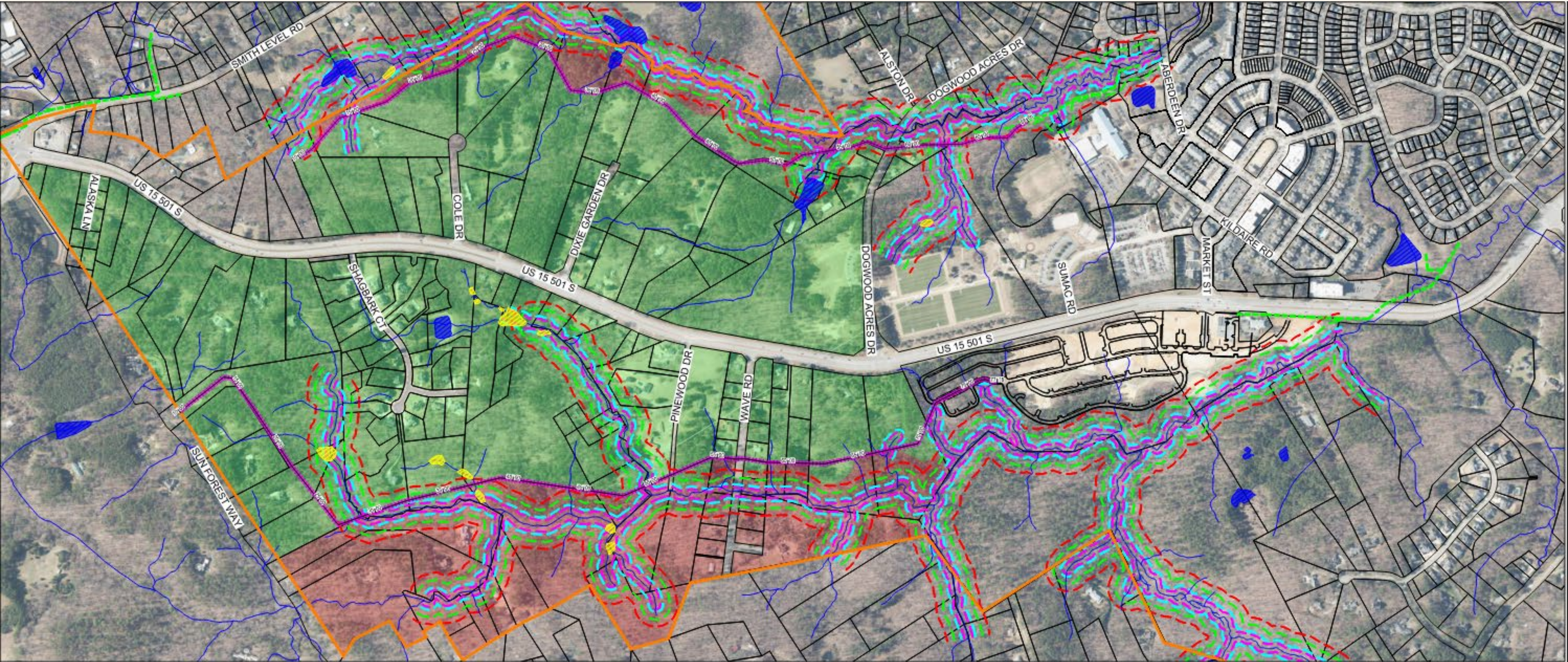
High construction costs will be a major barrier for new development.

Unlikely that individual missing-middle development can bear the upfront costs of expanding sewer infrastructure.

Public investments or nodes of more dense private development will be needed to support missing middle housing.

# Appendix

# Alternative 1: "Creekside"

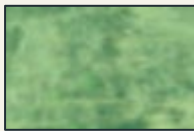
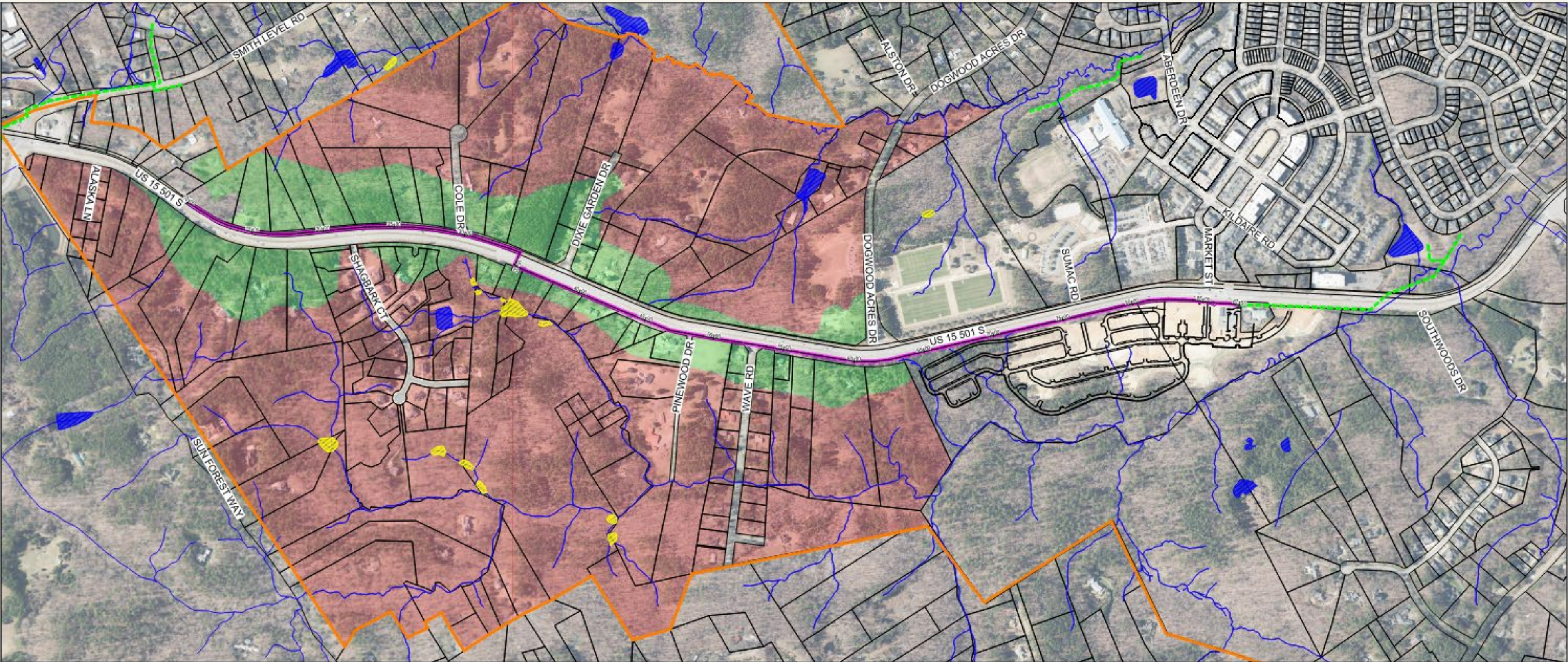


Area serviceable by gravity sewer



Area serviceable by pump stations

# Alternative 2: 15-501



Area serviceable by gravity sewer



Area serviceable by pump stations