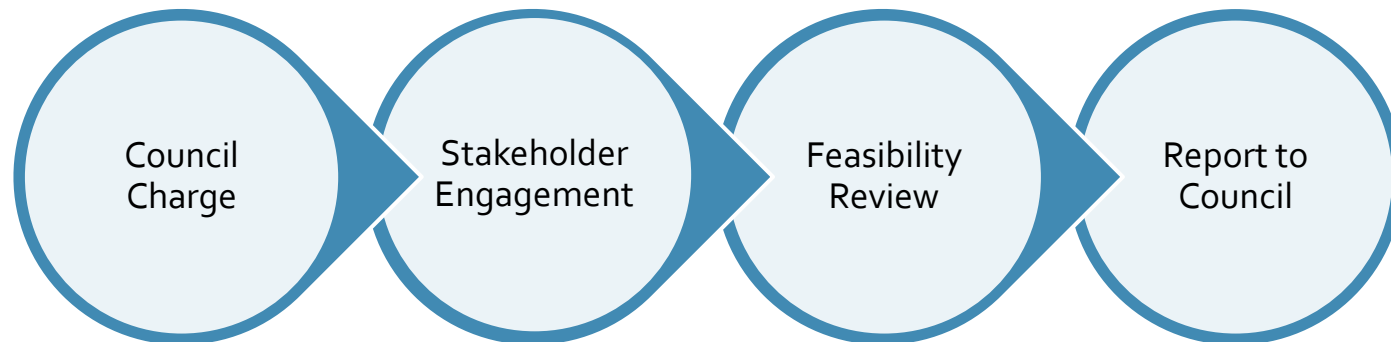


140 WEST PLAZA ACTIVATION & EXHALE

Council Business Meeting
June 13, 2018

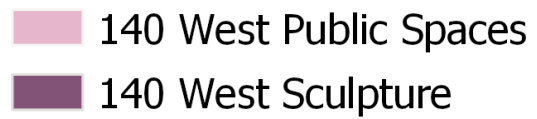
Recommendation

- Adopt R-8 – Sets a Council Charge
 - Stakeholder Input Process about 140 Plaza, including Exhale
 - Feasibility Review, including locations, logistics, associated costs
 - Return to Council with report



140 West Plaza

- Public Space Unit of the Lot 5 Land Condominium Agreement

- 
- A legend box with a black border containing two entries. The first entry consists of a pink square followed by the text '140 West Public Spaces'. The second entry consists of a dark purple square followed by the text '140 West Sculpture'.
- 140 West Public Spaces
 - 140 West Sculpture



Relationship to Carolina Square



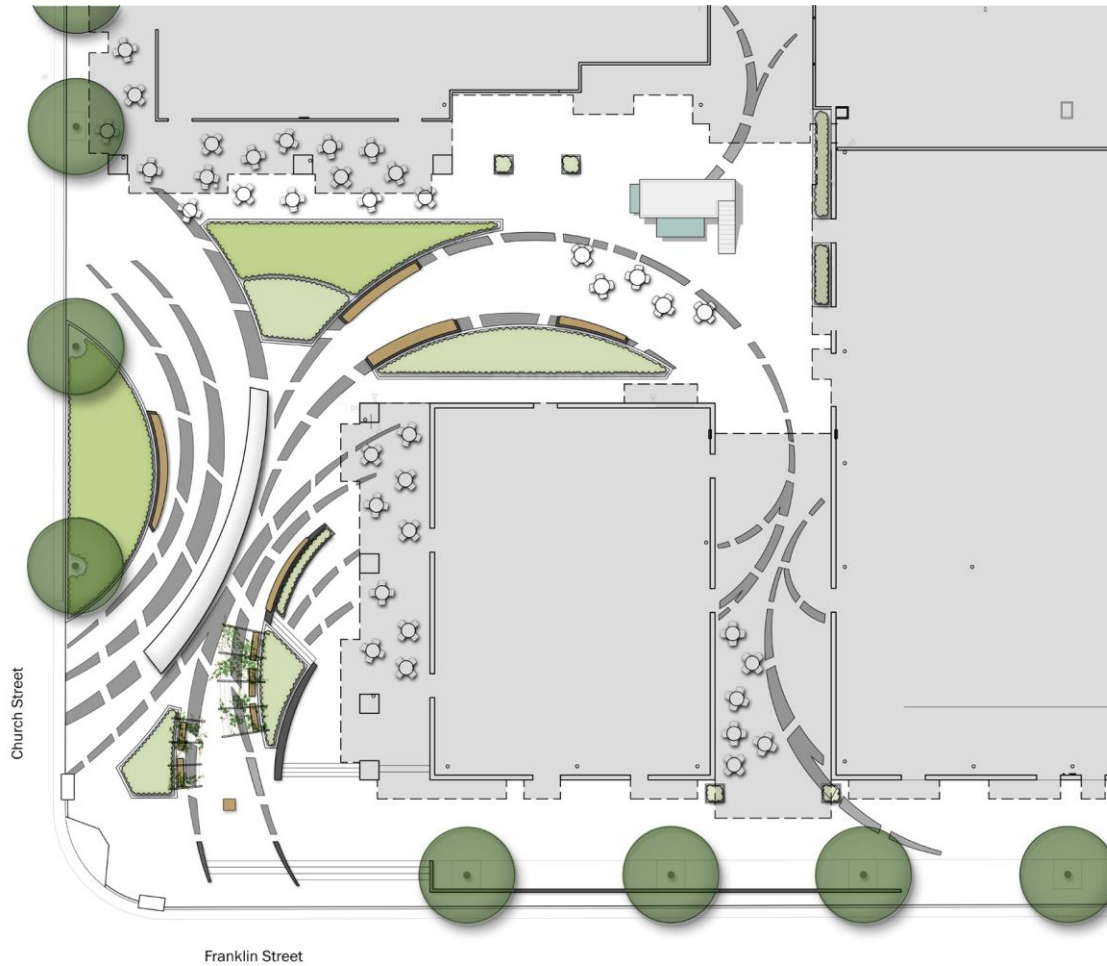
Existing Conditions



Plaza and Retail Space

- Owned and operated by Ram Realty
- Bought in 2016 by Asana Property
 - Actively Marketing
 - Offered design concepts for the space
- Shared Concepts at Council Committee on Economic Sustainability

ASANA Concepts



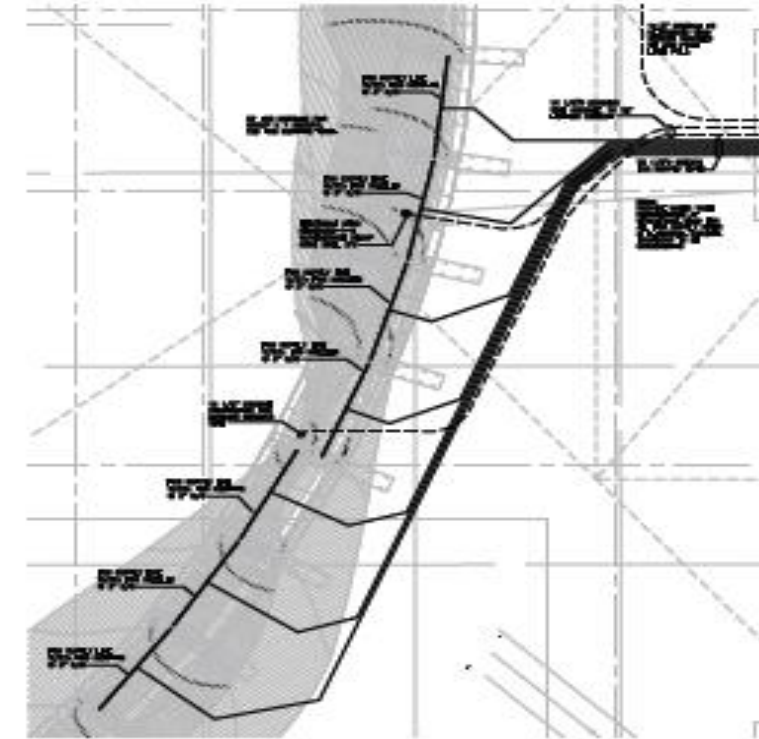
Exhale Overview



- Artist - Mikyoung Kim Design, Inc.
- Cost - \$527,000
- Commissioned by Ram Realty Co. & Town of Chapel Hill
- Installed – 2013
- Sculpture Components
 - Sculpture (\$263,000)
 - Cold Fog System and Lighting (\$41,150)
 - Reverse Osmosis Water Purification System (\$50,000)
 - Hardscape

Exhale Mechanical Support

Fog and Light



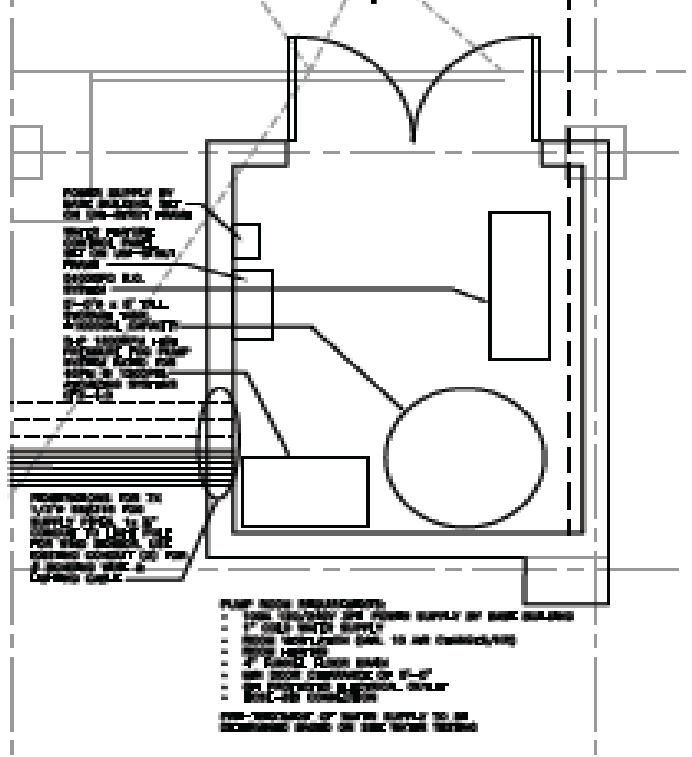
1
F-2
SCHEMATIC LAYOUT PLAN
DATE: 07/14/14

DW

DAN BEKER WATERMAN ENGINEERS INC.
11 MAJOR MACQUEEN BL. W. SACRAMENTO, CA 95833
TEL: 916.486.1100 FAX: 916.486.1101

Project: **Exhale**
Location: **Chapel Hill, NC**
Title: **FEATURE LAYOUT & DETAILS**
Scale: **AS SHOWN** Date: **07/14/14** Drawn by: **F-2**

Pump Room



1
F-1
MECHANICAL PUMP ROOM PLAN
DATE: 07/14/14

DW

DAN BEKER WATERMAN ENGINEERS INC.
11 MAJOR MACQUEEN BL. W. SACRAMENTO, CA 95833
TEL: 916.486.1100 FAX: 916.486.1101

Project: **Exhale**
Location: **Chapel Hill, NC**
Title: **MECHANICAL ROOM LAYOUT**
Scale: **AS SHOWN** Date: **07/14/14** Drawn by: **F-1**

PUMP ROOM MECHANICAL:

- 100% EXHAUST AIR FLOW SUPPLY BY BASIC DESIGN
- 1" (25.4) RIGID INSULATION
- 1/2" (12.7) RIGID INSULATION (SEE 100% EXHAUSTING)
- 1/2" (12.7) RIGID INSULATION
- 2" (50.8) RIGID INSULATION
- 1/2" (12.7) RIGID INSULATION
- 1/2" (12.7) RIGID INSULATION
- 1/2" (12.7) RIGID INSULATION

100% EXHAUST AIR FLOW SUPPLY TO BE PROVIDED BY THE EXHAUSTING SYSTEM

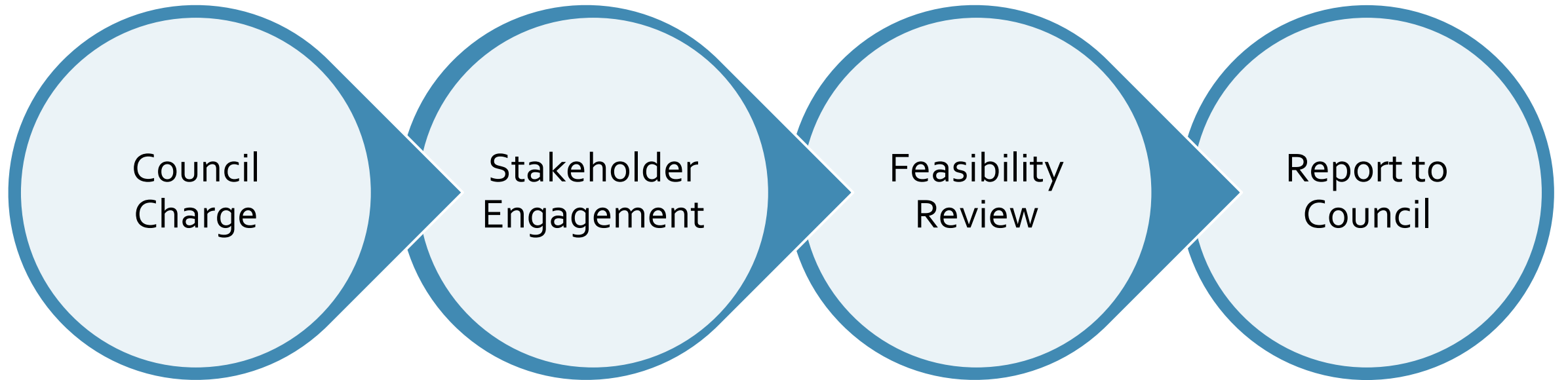
Exhale Expenditures

Item	One Time	Ongoing/ Annual	Total (4/2013-4/2018)
Design, Fabrication, Installation	\$527,000		\$527,000
Water Usage		\$1,200	\$6,000
Maintenance Contract*		\$9,000	\$45,000
Service & Repairs**	\$3,700		\$3,700
Total			\$581,702

Considerations

- What do residents like/dislike about the sculpture and 140 plaza? Why?
- What sites could accommodate the sculpture and the related infrastructure?
- What would the cost be to disassemble/reassemble sculpture, prep a new site, move, repair 140, etc?
- What would go in the space at 140 West?

Public Process



Recommendation

- Adopt R-8 – Sets a Council Charge
 - Stakeholder Input Process about 140 Plaza, including Exhale
 - Feasibility Review, including locations, logistics, associated costs
 - Return to Council with report

