



Complete Community Strategy: Amendment to Chapel Hill 2020

Draft

Town of Chapel Hill
May 10, 2023

Recommendation

- Close the hearing;
- Adopt Resolution #X to update the Town's Comprehensive Plan with *Complete Community Strategy* and its recommendations.



Timeline



Spring/Fall 2022

- Consultant presents to Council and Council Committee for Economic Sustainability (CCES)
- Stakeholder interview sessions (2 rounds)
- Community Meeting



Winter 2022-2023

- Consultant presents to Council and Council Committee for Economic Sustainability (CCES)
- December 7, 2022 Council adopt Complete Community Framework



Spring 2023

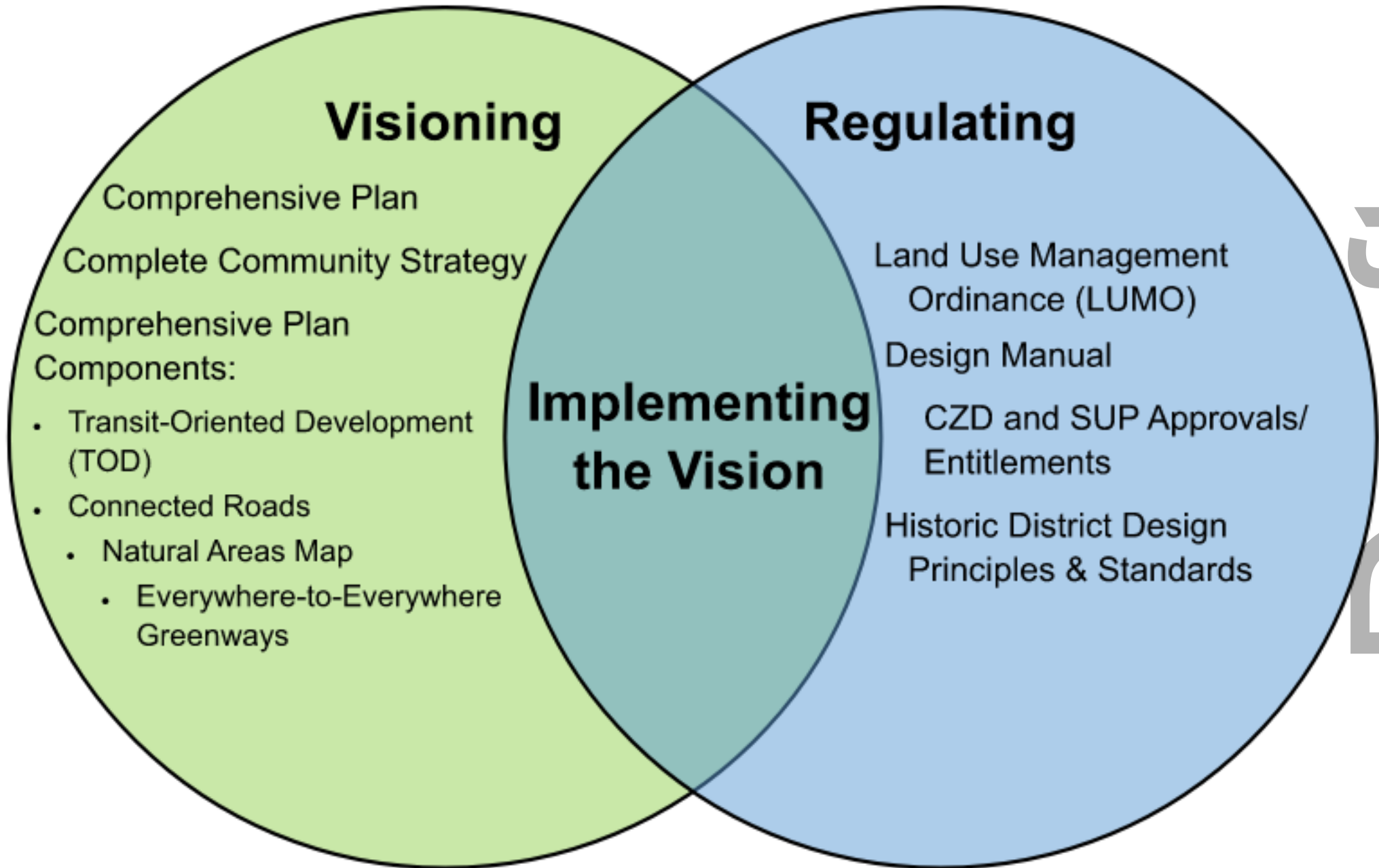
- April 4, 2023 Planning Commission Recommendation
- April 19, 2023 Council Hearing
- May 10, 2023 Council Action

Draft

Updates since the hearing

- Everywhere to Everywhere Greenways Map updates including adding some new facilities and destinations
- Preparing/scheduling review of Natural Areas Map by partner agencies and Advisory Boards
- Working with Parks and Recreation staff:
 - Coordination between the Natural Areas Map and Parks Master Plan
 - Parks and green space goals

Draft



Visioning

Comprehensive Plan

Complete Community Strategy

Comprehensive Plan

Components:

- Transit-Oriented Development (TOD)
- Connected Roads
 - Natural Areas Map
 - Everywhere-to-Everywhere Greenways

Regulating

Land Use Management Ordinance (LUMO)

Design Manual

CZD and SUP Approvals/Entitlements

Historic District Design Principles & Standards

Implementing the Vision

Draft

Chapel Hill 2020 Comprehensive Plan

Complete Community Strategy

Adopted Additions to the Comprehensive Plan:

- Parks Comprehensive Plan
- Greenways Master Plan
- Central West Small Area Plan
- Chapel Hill Bike Plan
- Stormwater Management Master Plan
- Cultural Arts Plan
- West Rosemary Street Development Guide
- Mobility & Connectivity Plan
- Future Land Use Map (FLUM)
- Climate Action Plan & Response Plan

Proposed Updates to the Comprehensive Plan:

- Transit-Oriented Development (TOD)
- Connected Roads
- Natural Areas Map
- Everywhere-to-Everywhere Greenways

Components of the Comprehensive Plan

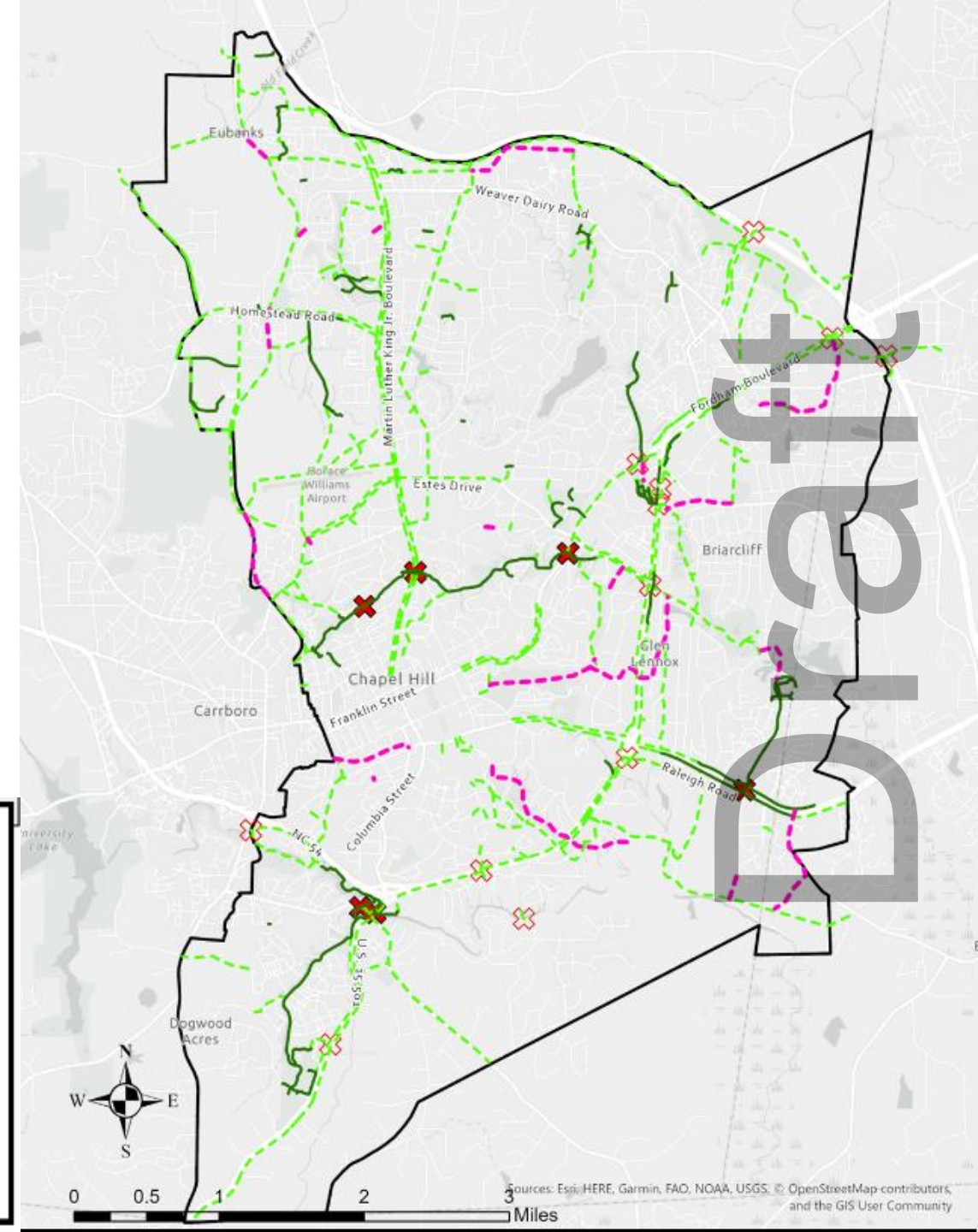
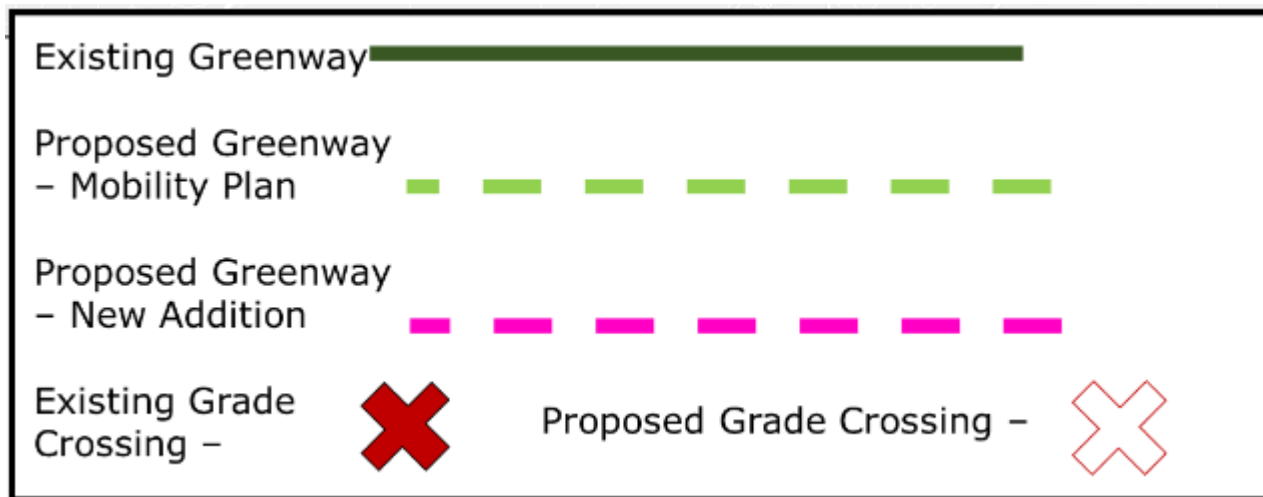
Draft

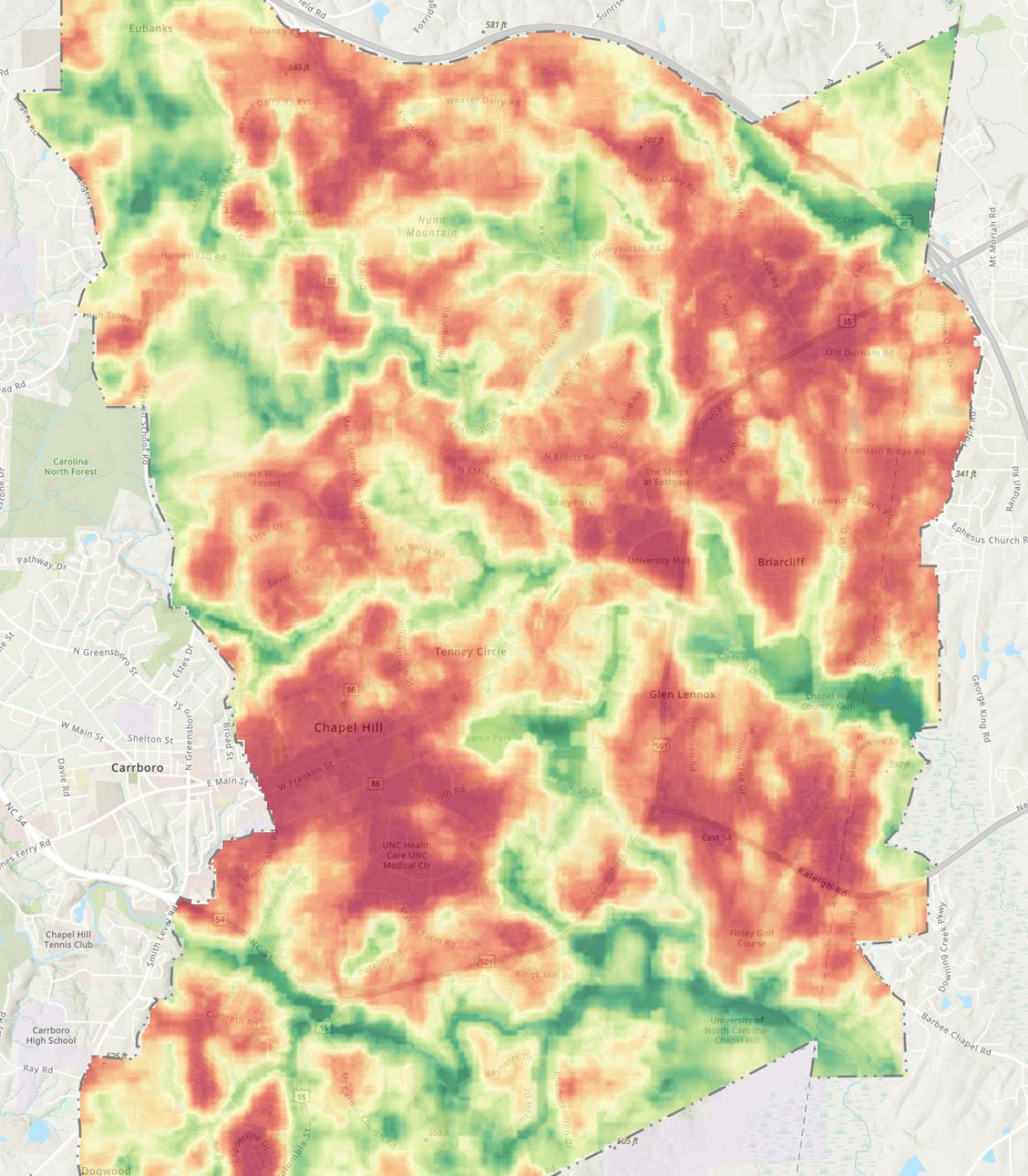
Principles of Placemaking Elements of Complete Communities for Chapel Hill



Draft

Everywhere to Everywhere Greenways





DRAFT

Natural Areas Map

Draft

Recommendation

- Close the hearing;
- Adopt Resolution #X to update the Town's Comprehensive Plan with *Complete Community Strategy* and its recommendations.

