
RESOLUTE

RESOLUTE Building Company
P.O. Box 3656
Chapel Hill, NC 27515
(919) 933-1000
(919) 493-1000
Fax: (919) 493-3333

Dear Chelsea Laws,
Town of Chapel Hill Permitting & Inspections

Resolute Building Company is assisting with and managing a minor modification to a building that we built a few years ago as a commitment to our work. I am seeking guidance on the required permitting process and am reaching out to you for assistance.

The design issue that has been plaguing the building is created from a wind tunnel effect caused in a second floor breezeway. When it rains, the wind blows rain into the middle of the exposed corridor which then puddles. Over time, this has created two issues. The first is water seeping through the concrete slab to the steel and deck below. This has caused corrosion to the steel members supporting the concrete deck. This corrosion although minor has potential to become a more serious issue if left unaddressed. The second issue occurs during winter months, when the same precipitation blows in it freezes and accumulates. The snow and ice is slow to thaw due to lack of direct sunlight. This causes a slip and fall risk for the tenants.

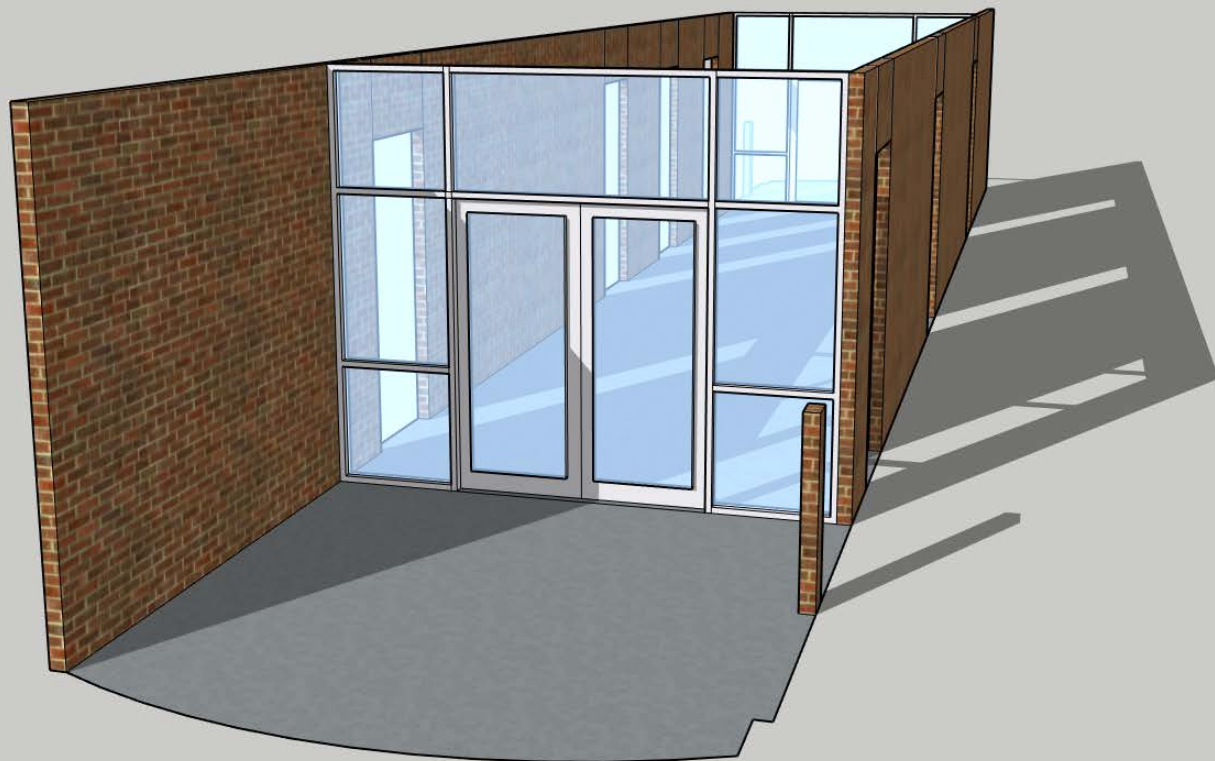
The repair that we have proposed, and that has been accepted by the building tenants is to install two elevations of storefront on either end of this breezeway. This would block the precipitation from entering the corridor. The storefront elevations would include bi-parting doors without locksets and standard door hardware pulls, push bar, and door closers. Attached you will find elevations, renderings, proposed door hardware, and pictures of the location. Due to the space being unconditioned, we have included stainless wire mesh screens in the upper corners of both storefront elevations to provide adequate ventilation. This ventilation would also reduce the risk of doors slamming when conditions are windy.

I am proposing that this modification could be deemed a repair in terms of the permit process which would preclude the need for a building permit. However, I understand the need to inspect the space and the modification for life and safety issues. Please inform me of the necessary steps that I need to take with the permitting office in order to proceed with this work.

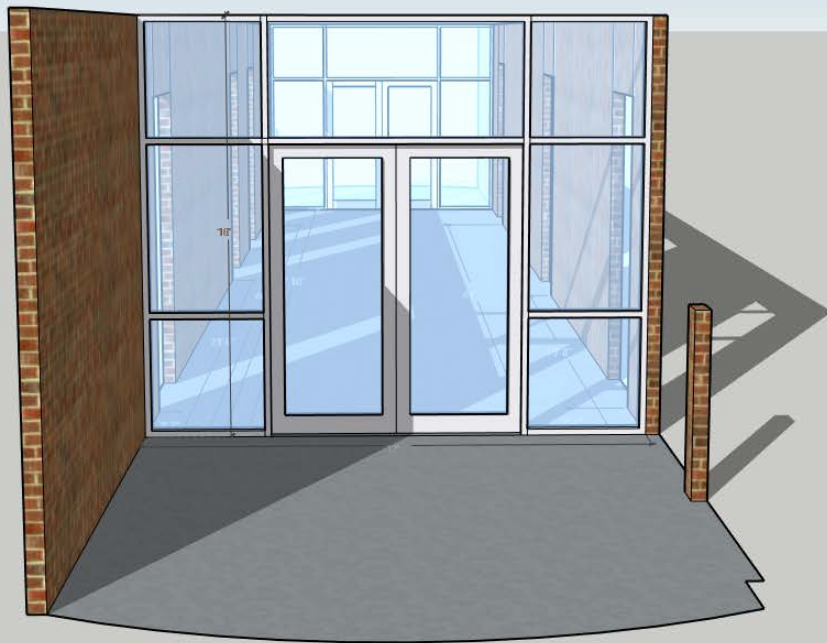
Sincerely,
Mark Anna
Resolute Building Company

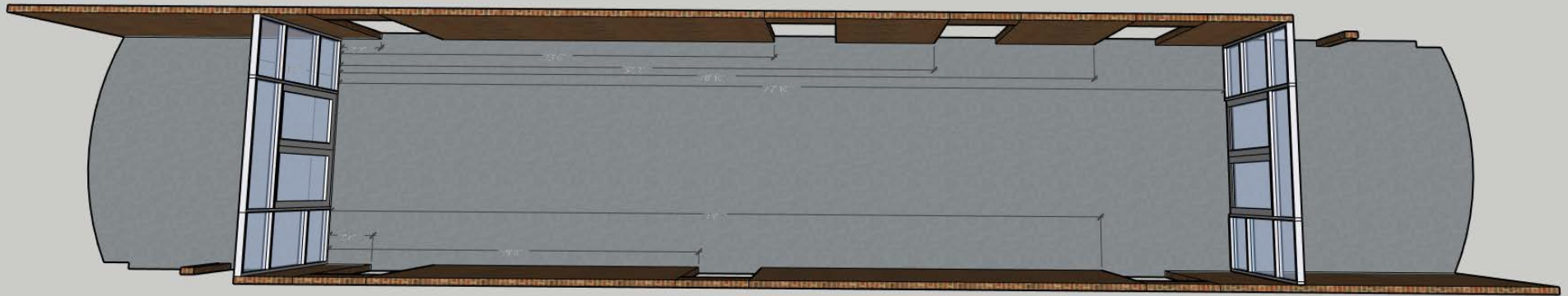
Project Location: 100 Timberhill Pl., Chapel Hill, NC 27514

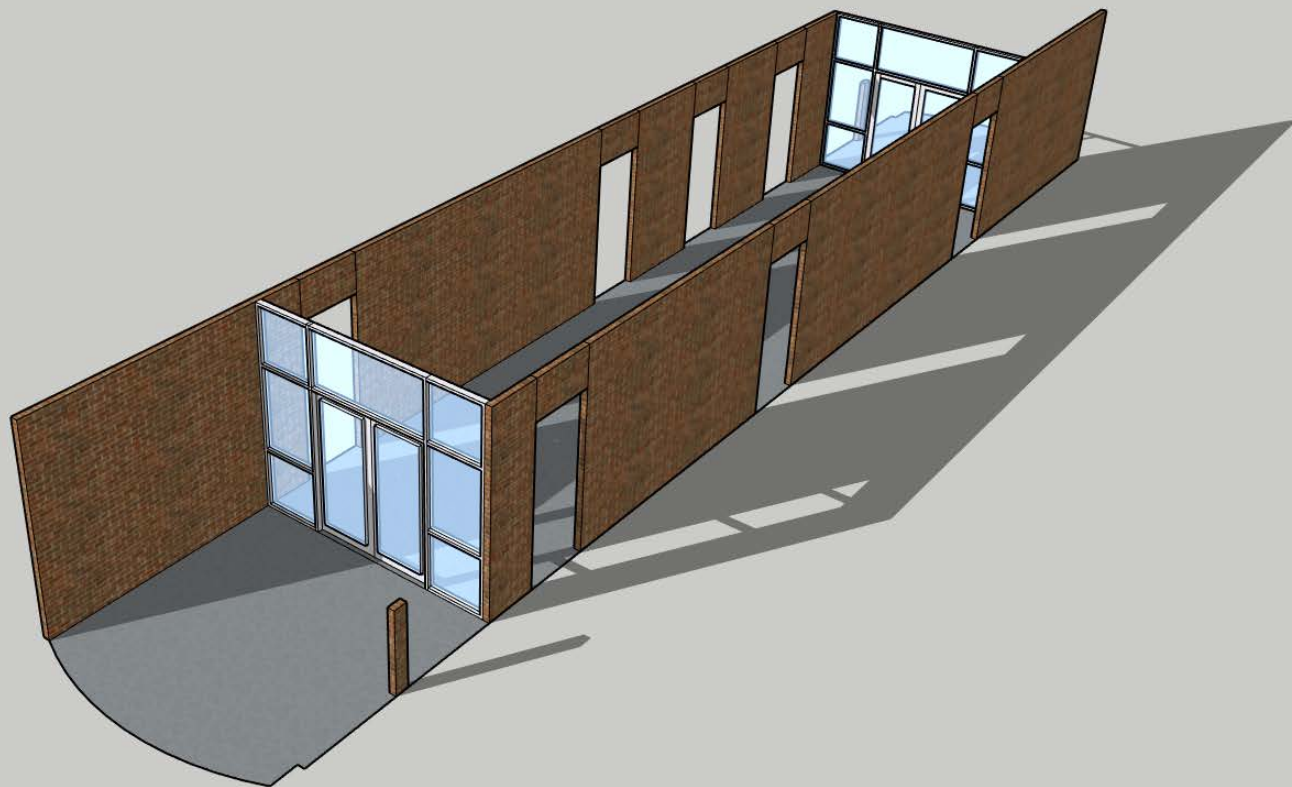


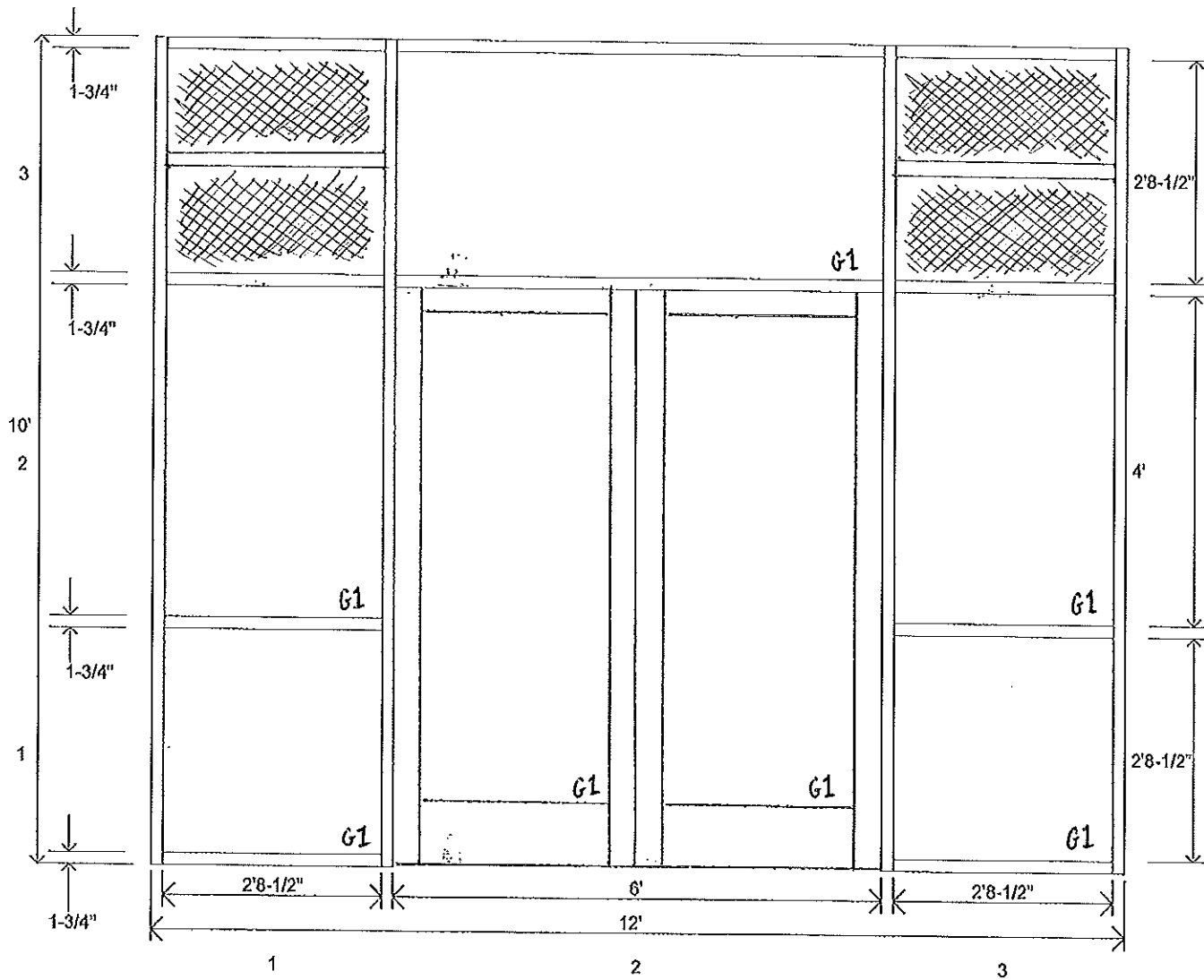












Elevation Description
 Copies of Elevation
 System Type

: Timberhill
 : 2
 : FG-2000

G1 = 1/4" clear Tempered



These one inch diameter push and pulls are the industry standard for contemporary design. Rockwood sets the benchmark for quality and value in this product category. Our offset pulls come with a 2-1/2" clearance for enhanced ADA compliance. Use two or three push bars on a door as an attractive design element and increased usability for people of all heights.

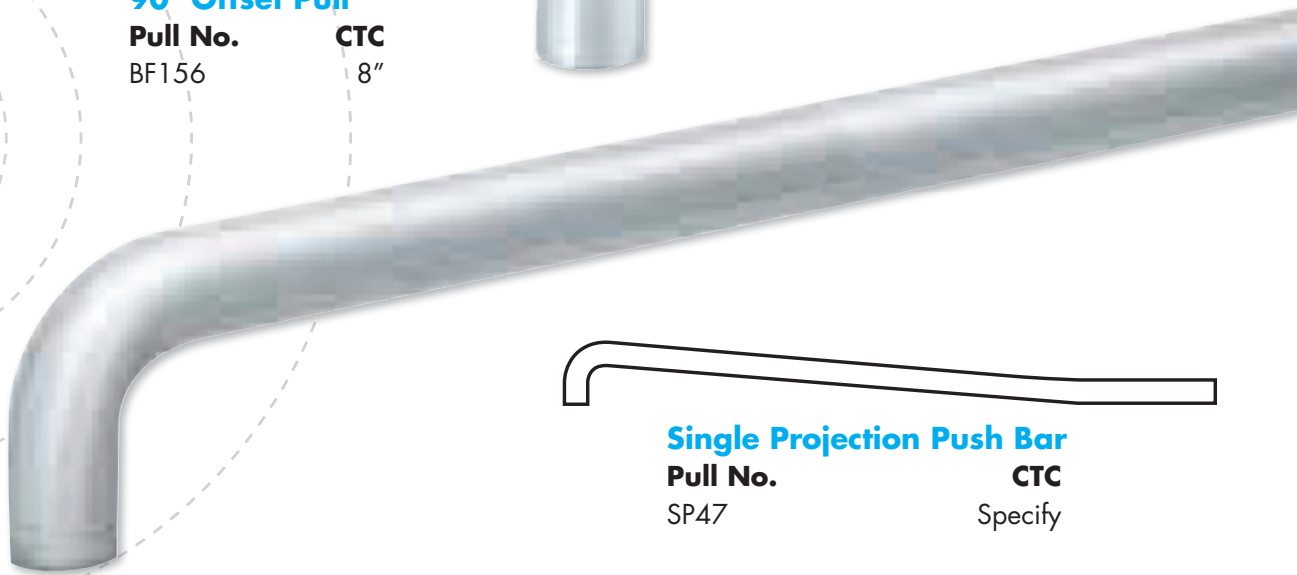
Standards 1" diameter pulls



90° Offset Pull
Pull No. BF156 **CTC** 8"



Single Projection Push Bar
Pull No. SP47 **CTC** Specify



TUBELITE®
 STOREFRONT, CURTAINWALL & ENTRANCES
DEPENDABLE