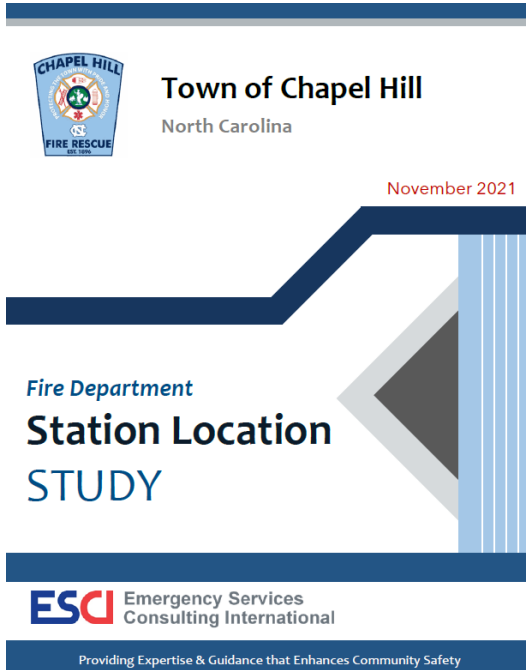


Chapel Hill Fire Department



Station & Facility Replacement Master Planning Discussion

Draft

Objectives of the Study:

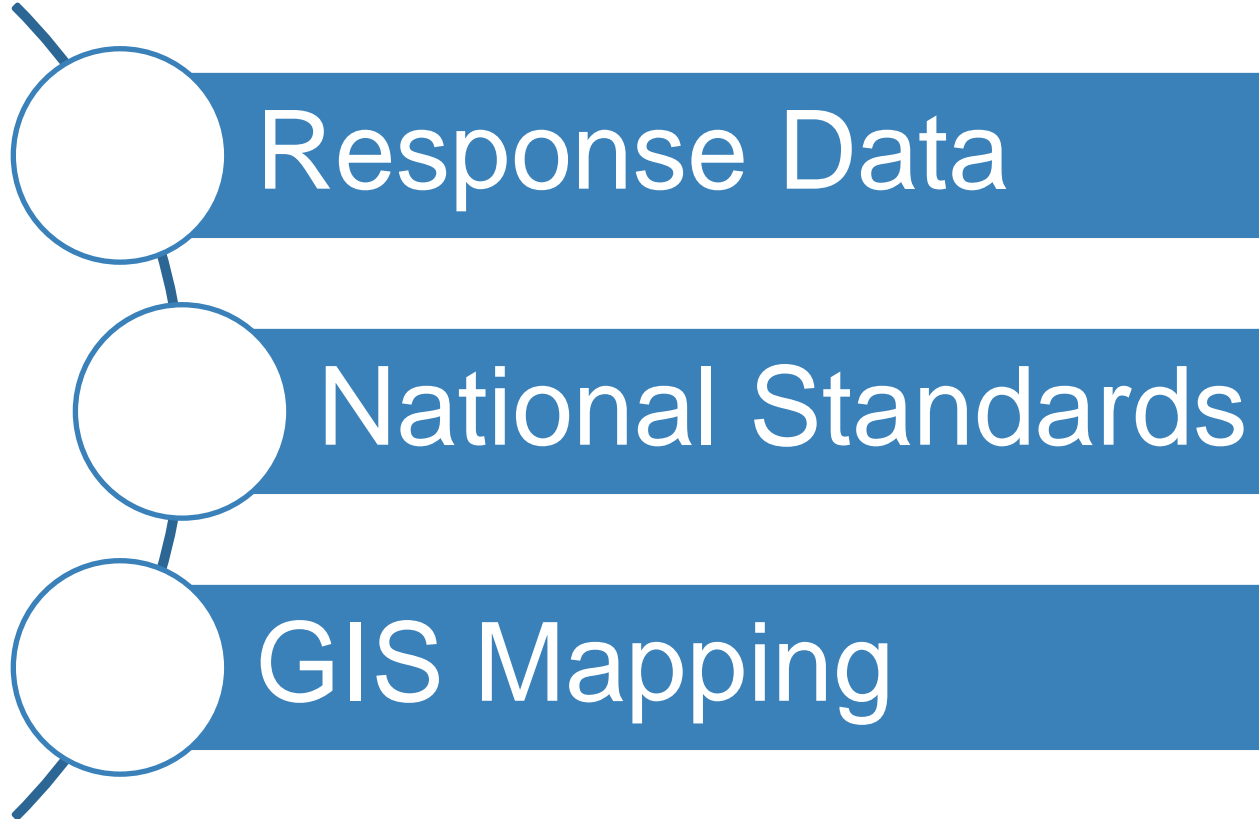
Determine Station, Staffing and Apparatus Needs

Evaluate Placement of Stations

Plan for future growth and development of Chapel Hill

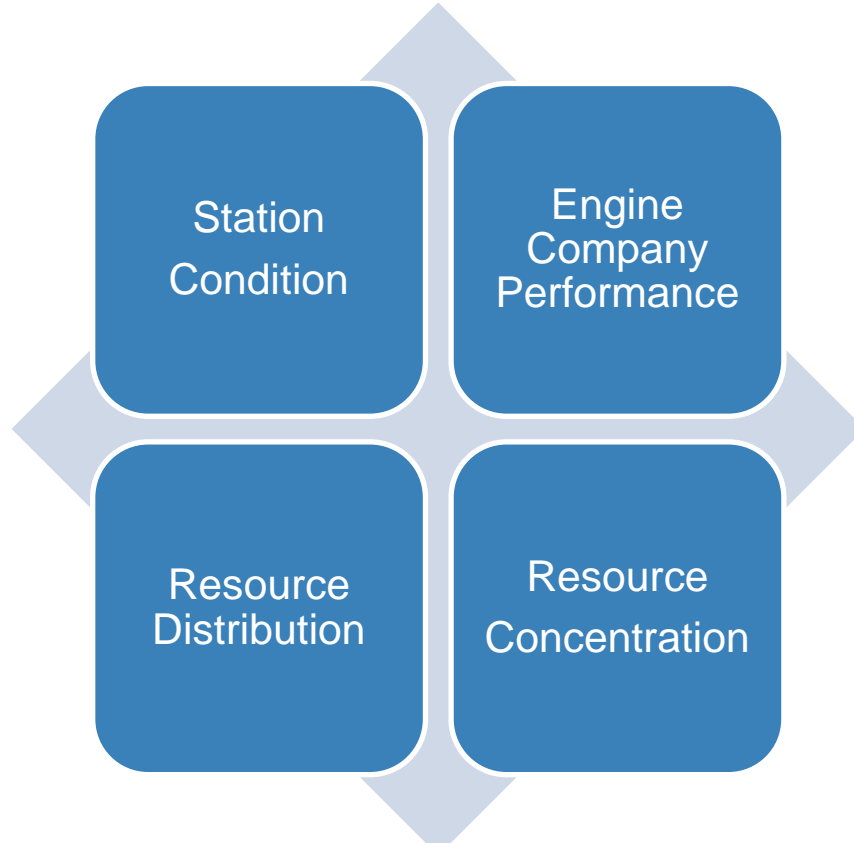
Draft

Methodology



Draft

Findings



Draft

Study Graded Current Facilities on the following criteria:

- **EXCELLENT: “Like New”;** meets current & future needs
- **GOOD: “Minor Wear”;** meets intended purpose relative to current needs
- **FAIR: “Structurally Sound”;** mechanical systems function but may need upgrade; may not meet purpose based on current needs
- **POOR: “Advanced Deterioration”;** problematic age-related maintenance; not well suited for current or future purpose

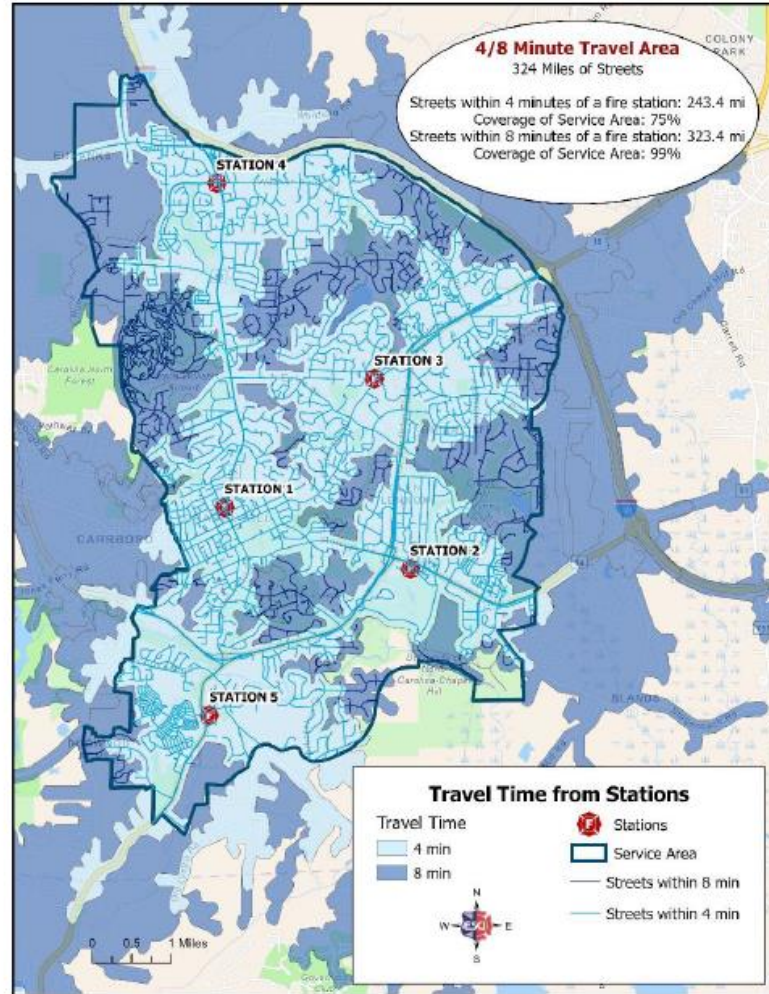
Findings: Station Condition

CHFD Station	Age	Rated Condition	Number of Apparatus	Minimum Staffing
1	58	Poor	2	4
2	3	Excellent	3	6
3	51	Poor	2*	3
4	39	Poor	2	4
5	20	Good	1	3

Draft

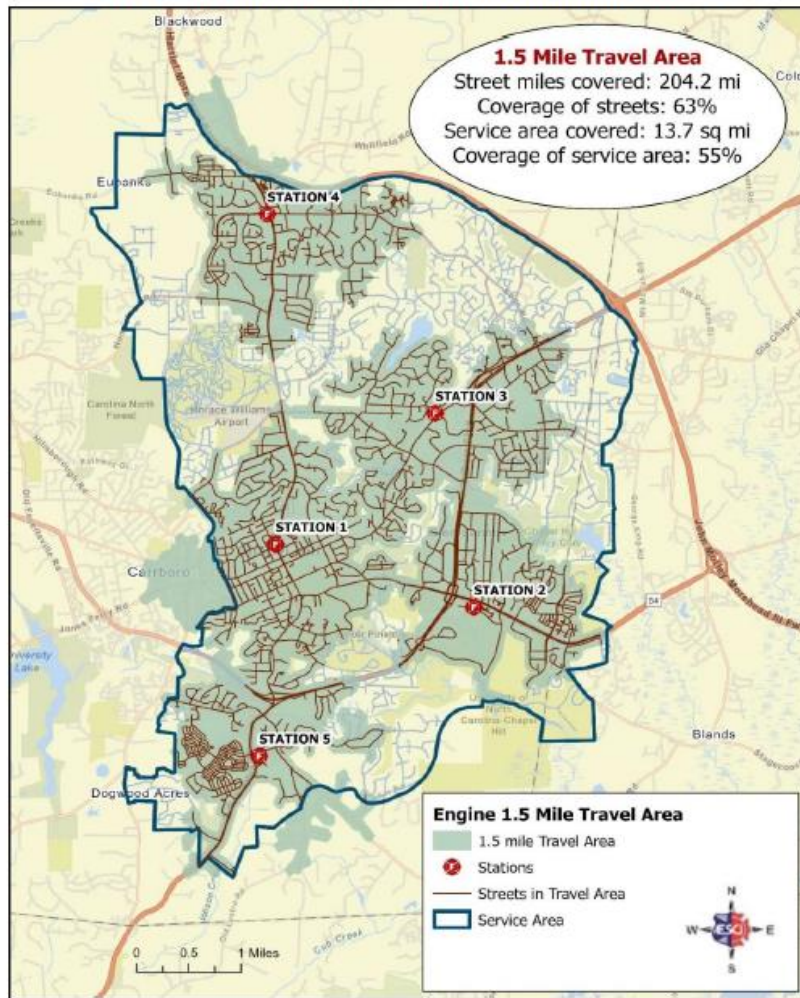
Findings: Resource Distribution

Figure 31: Chapel Hill Predicted 4 and 8-Minute Travel Times, NFPA 1710



Draft

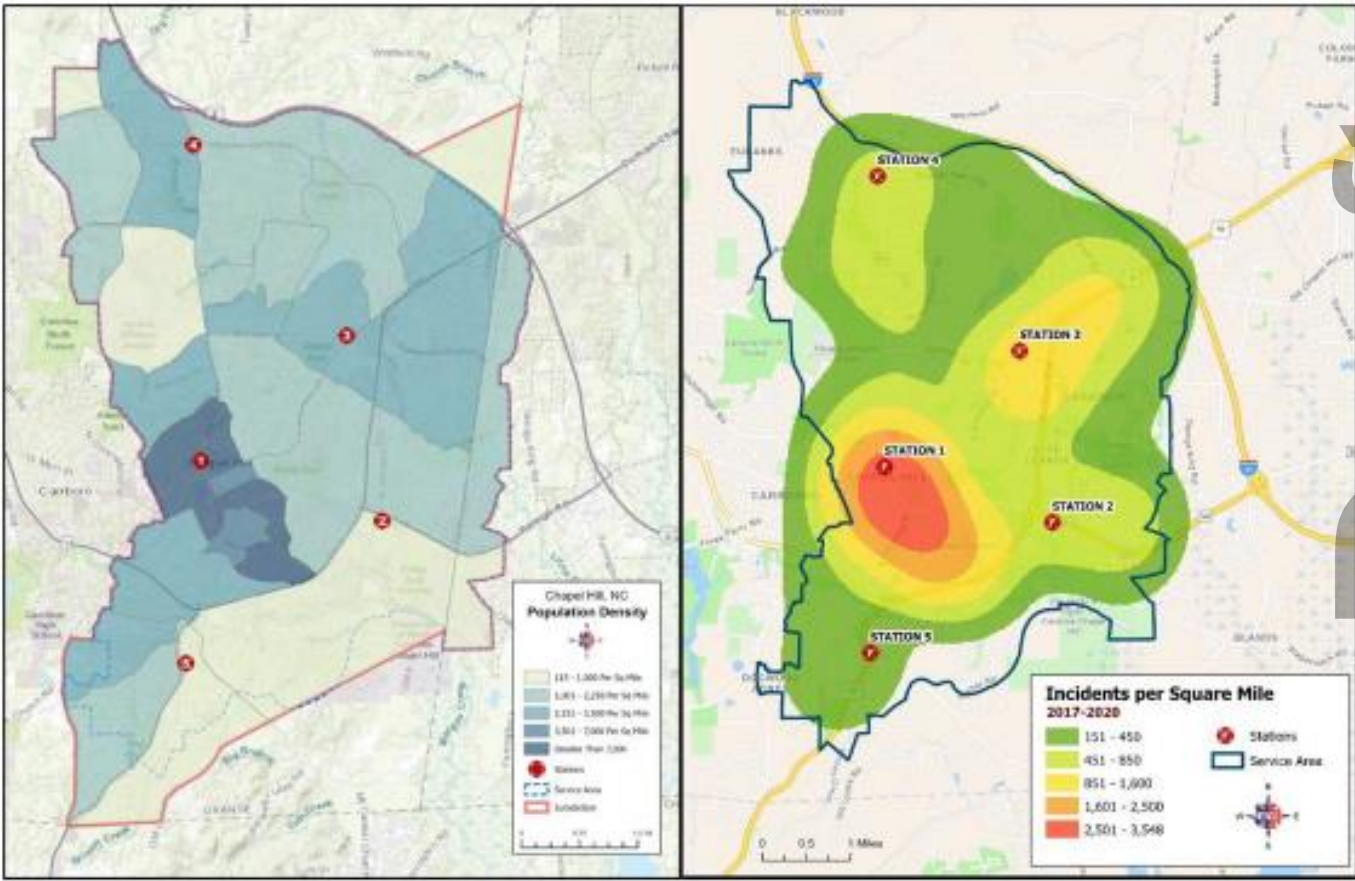
Figure 33: Chapel Hill ISO 1.5-Mile Engine Company Service Areas



Findings: Engine Company Performance

Draft

Findings: Population & Incident Density



Draft

Recommendations

Figure 70: Measuring System Effectiveness



Draft

Recommendations

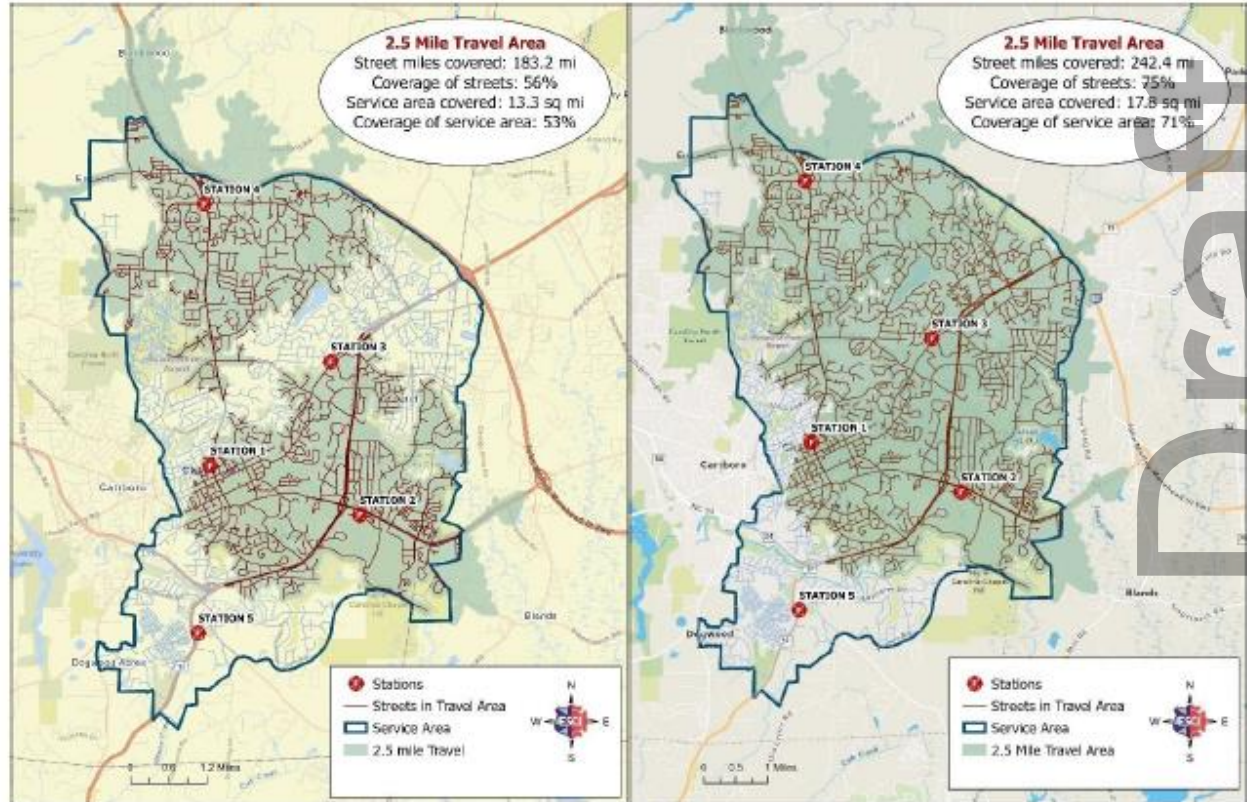
- **Long-Range Station Replacement Plan**
- **Additional Ladder Company**
- **Long-Range Apparatus Replacement Plan**
- **New Training Facility**

Draft

Recommendations

Additional Ladder Company Station 3

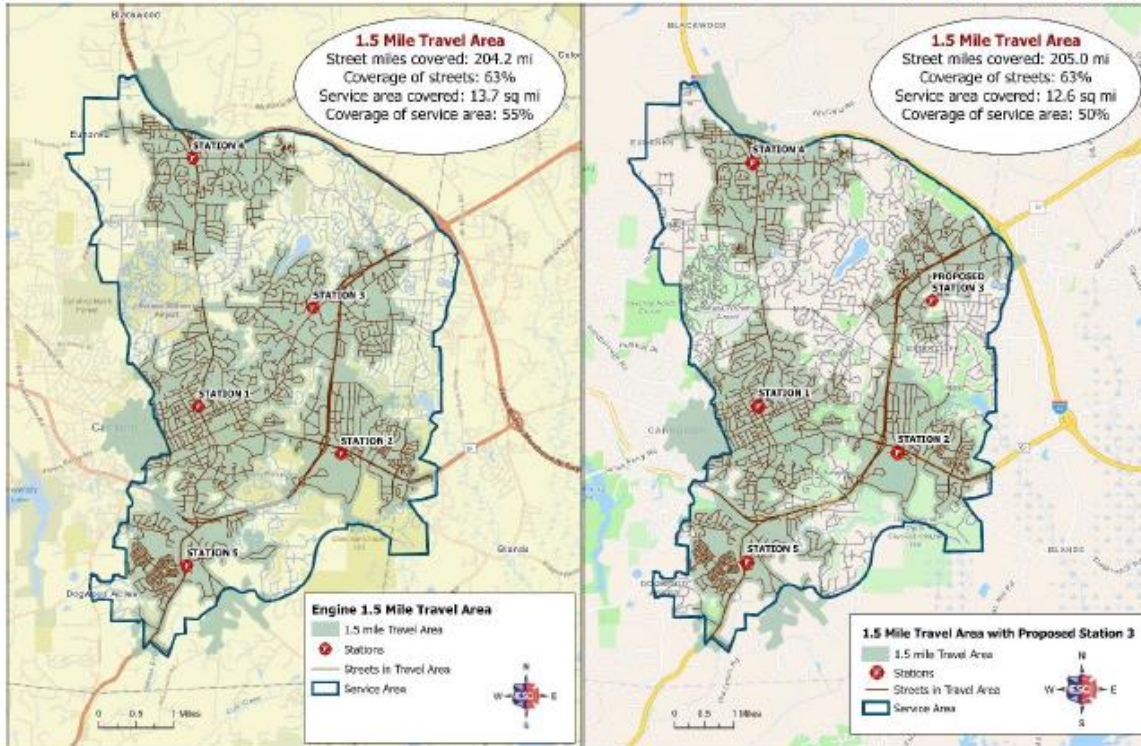
Figure 88: Proposed ISO 2.5 Mile Ladder Company Service Area Coverage Fire Station 3



Recommendations

Replacing Station 3 on Legion Rd

Figure 84: ISO 1.5 Mile Coverage Proposed New Station 3 at Legion Road Property (PIN 9799555951)



Draft

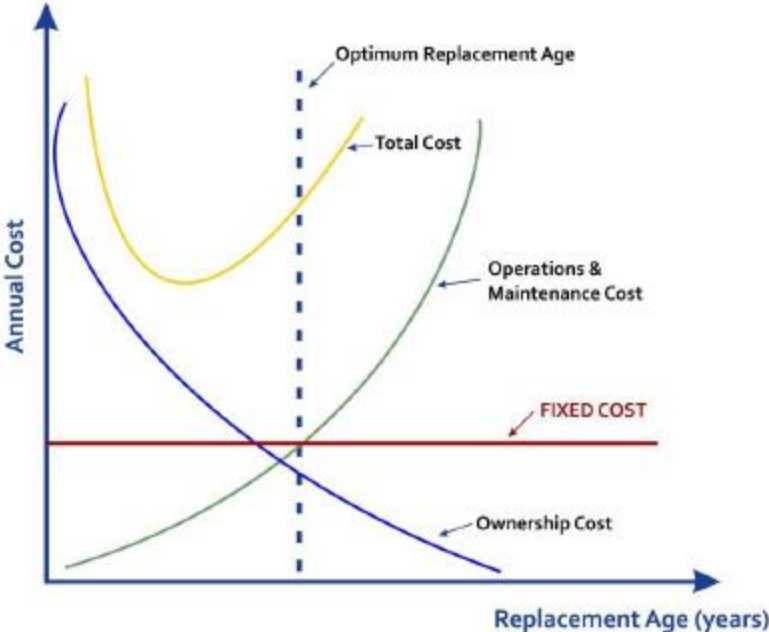
Recommendations

Apparatus	Life Expectancy	Replacement Year
Engine 33	15	On Order
Engine 34	15	On Order
Engine 39	15	Overdue
Squad 61	20	2024
Truck 64	15	2023
Engine 31	15	2031
Engine 32	15	2024
Engine 35	15	2023

Draft

Recommendations

Figure 76: Economic Theory of Vehicle Replacement



Draft

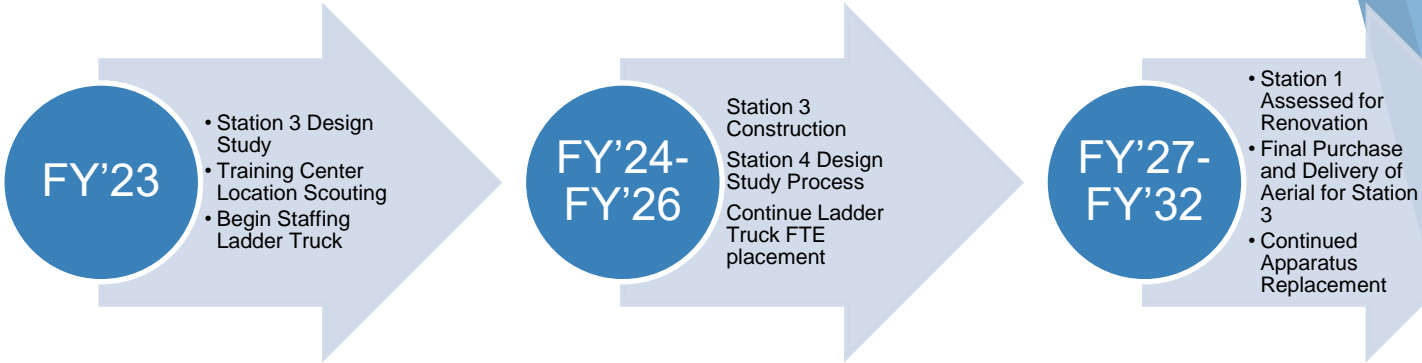
Recommendations

CONSTRUCT NEW TRAINING FACILITY



Draft

What's Next



Draft

Requests of Council:

Support for Town Management, CHFD Administration, and other stakeholders to continue working together to lay out a master plan for Chapel Hill Fire Department facility design and build.

Engage in discussions with Town Management, Fire Department Administration, and Business Management to identify funding for design and construction phases of the overall Fire Department Facilities Replacement Master Plan, beginning with Fire Station 3.

Support ongoing collaboration with Orange County Emergency Services to help with funding and to house Emergency Medical Services response resources at redeveloped fire stations.

Draft

Questions?

- **Have we provided enough information for Council to work for fire facility replacement?**
- **How can we better align our vision with Council's vision of maintaining public safety?**
- **What other information can we provide so that you can make confident budget decisions as we move forward together?**

Draft