

Castle Footprint

1 inch = 20 feet
40 20 0 40 Feet



North-East Side View



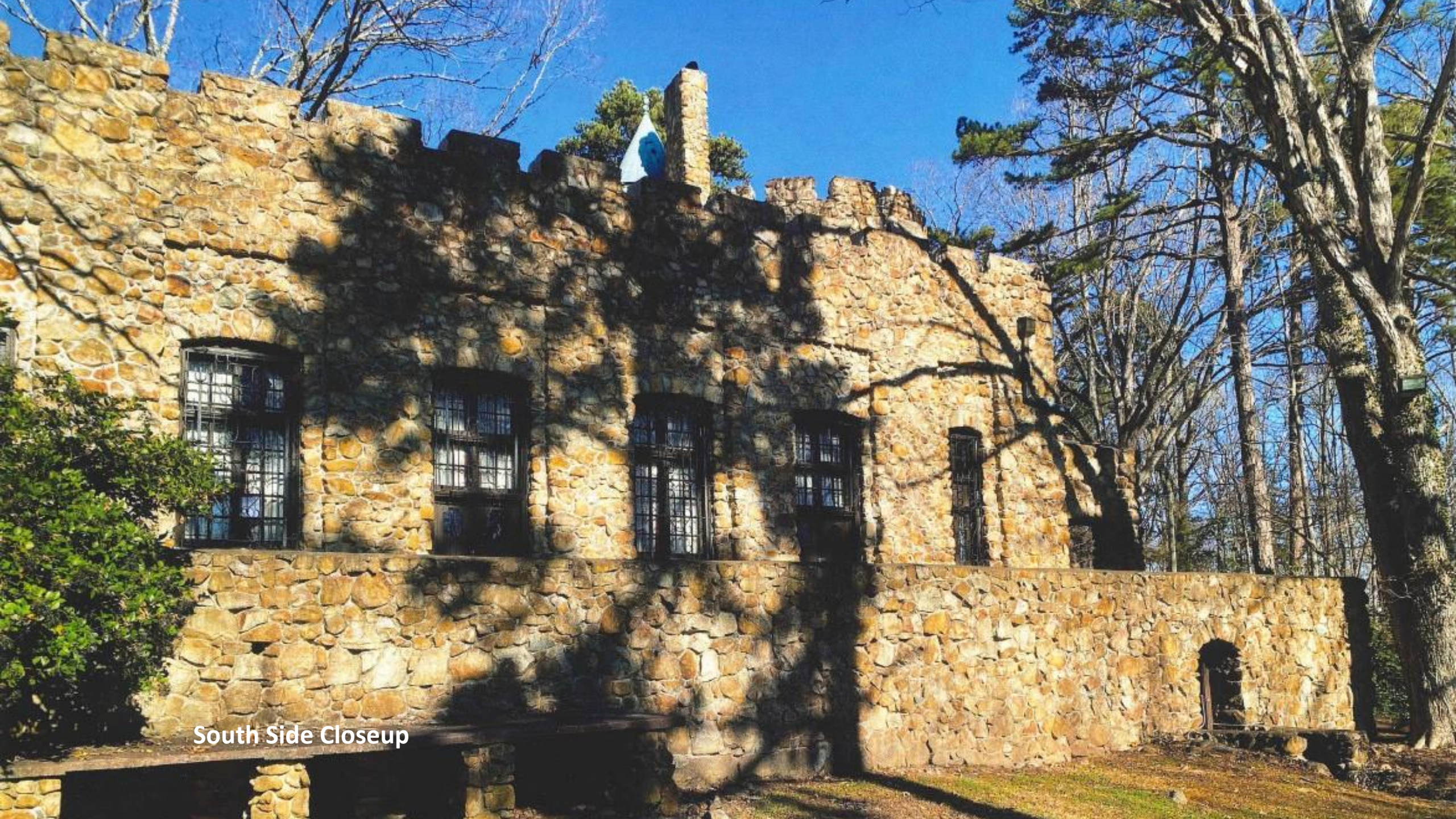
North Side View



West Side View



South Side View



South Side Closeup

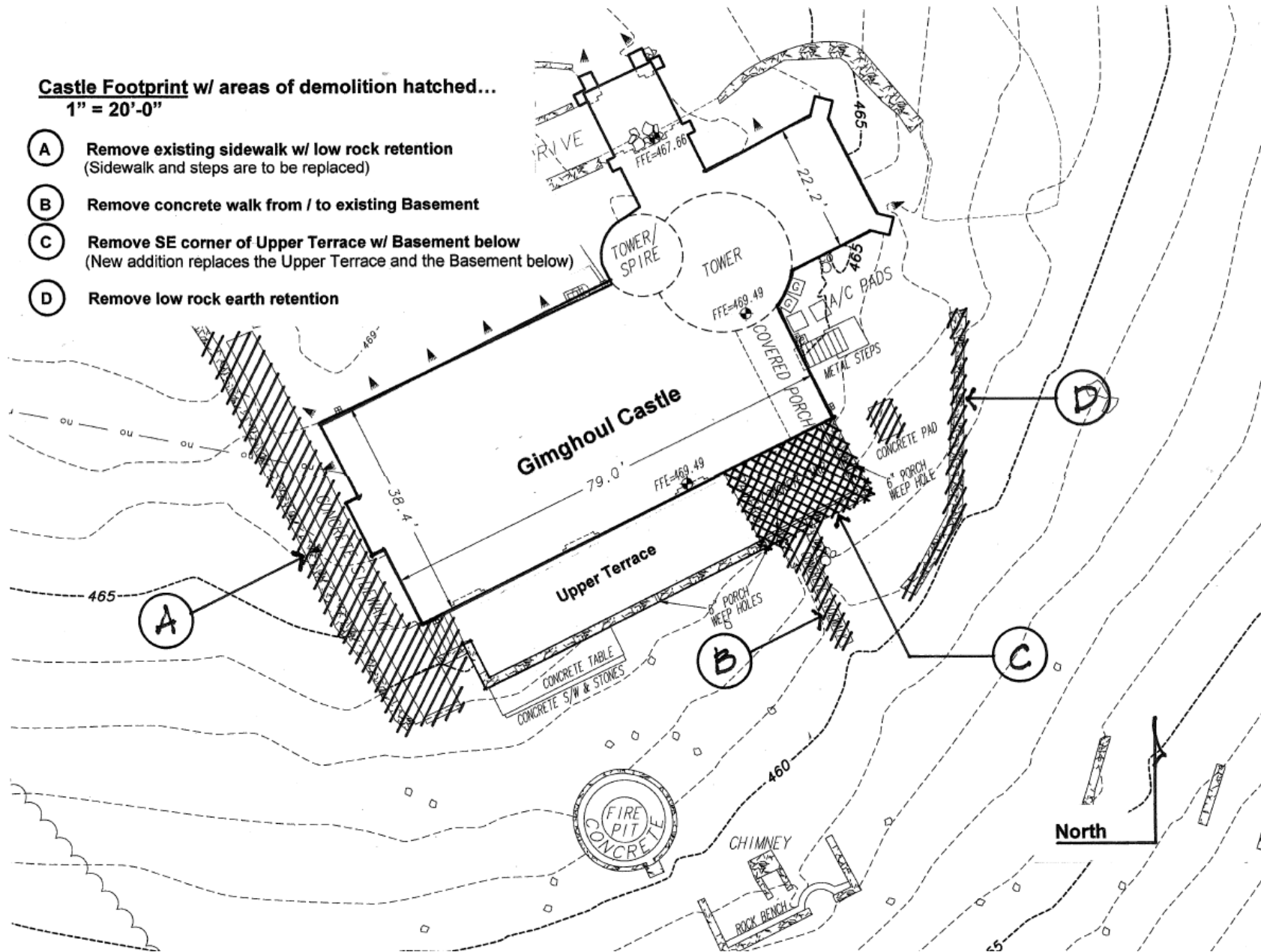


East Side View

Castle Footprint w/ areas of demolition hatched...

1" = 20'-0"

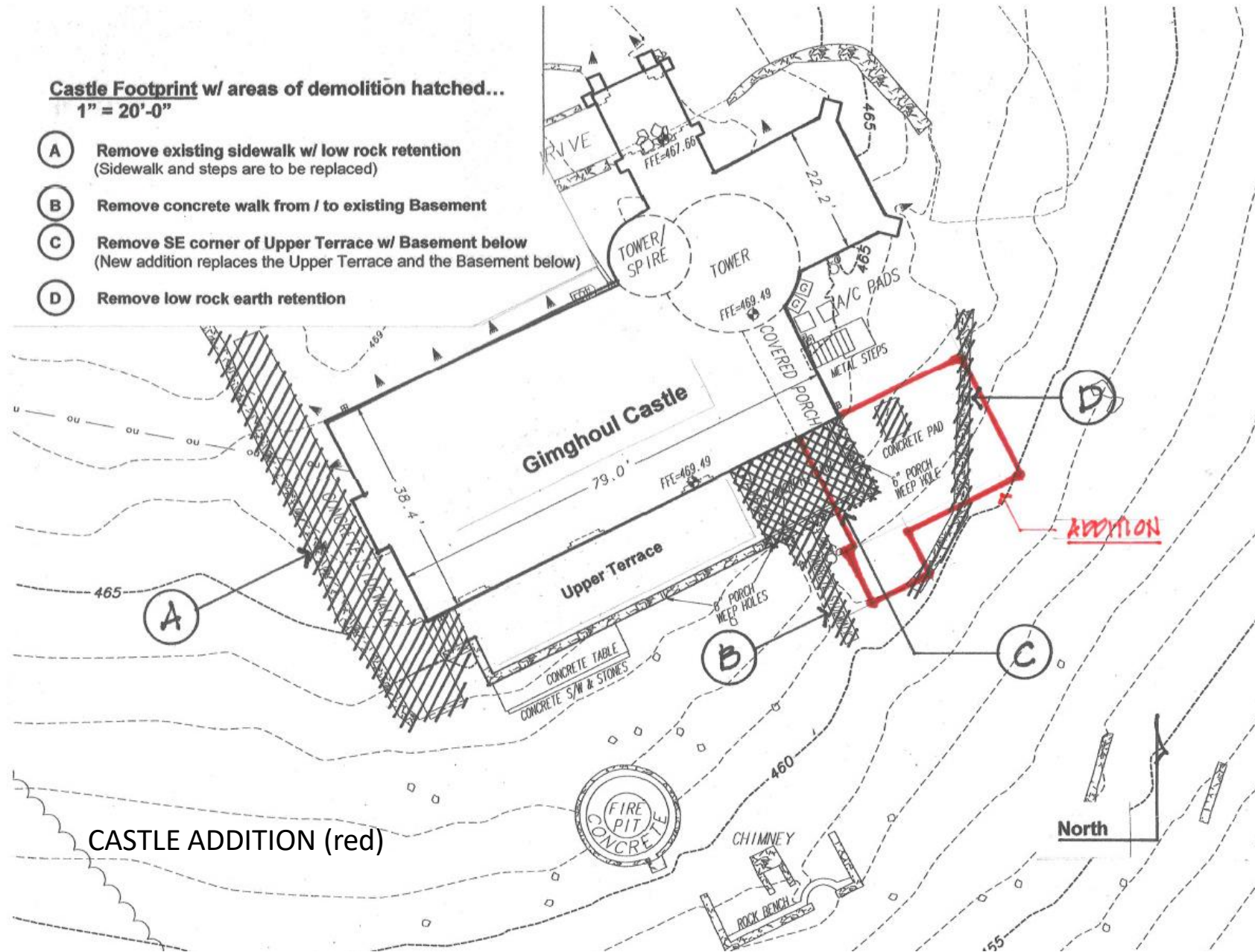
- (A)** Remove existing sidewalk w/ low rock retention
(Sidewalk and steps are to be replaced)
- (B)** Remove concrete walk from / to existing Basement
- (C)** Remove SE corner of Upper Terrace w/ Basement below
(New addition replaces the Upper Terrace and the Basement below)
- (D)** Remove low rock earth retention



Castle Footprint w/ areas of demolition hatched...

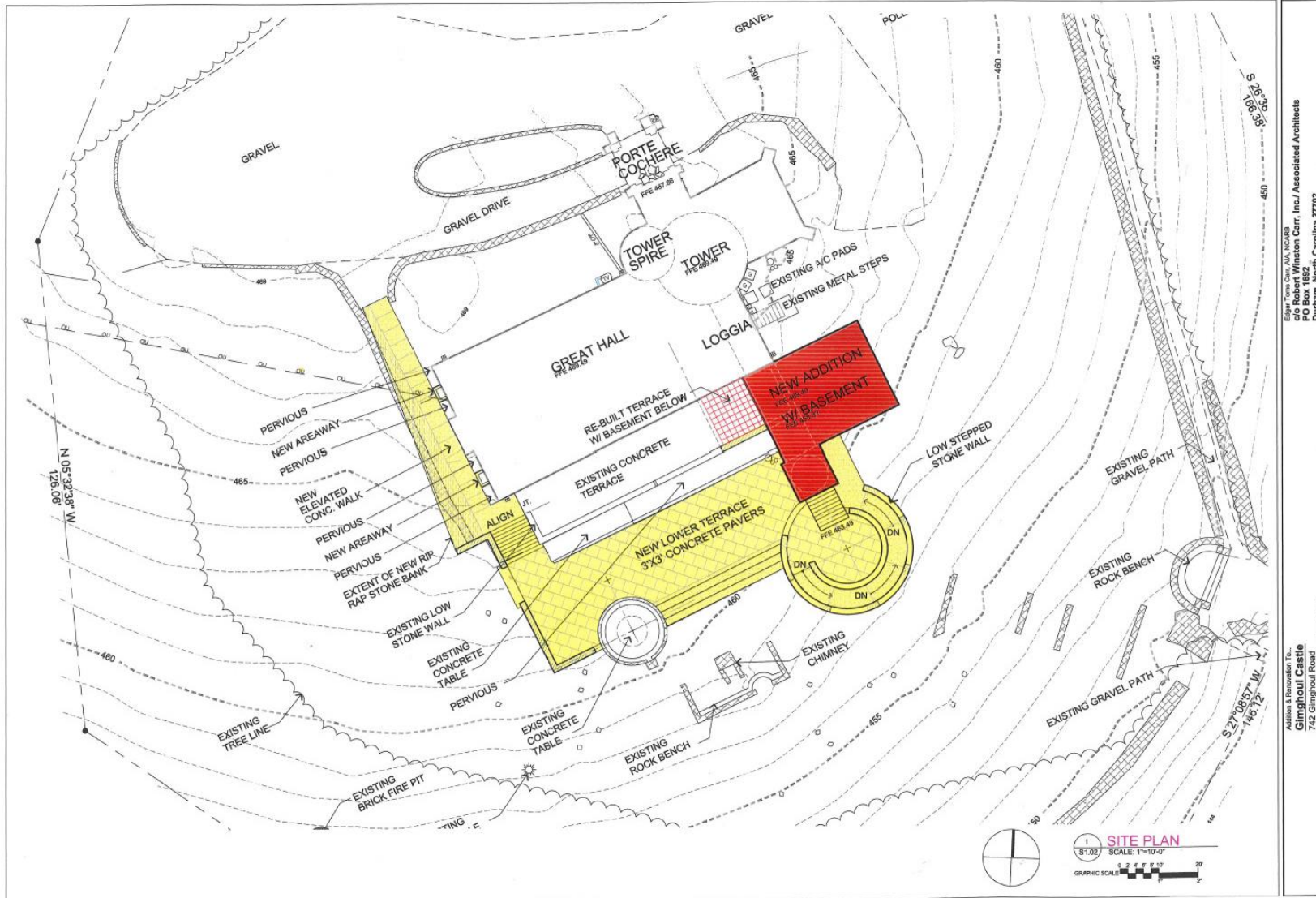
1" = 20'-0"

- (A)** Remove existing sidewalk w/ low rock retention
(Sidewalk and steps are to be replaced)
- (B)** Remove concrete walk from / to existing Basement
- (C)** Remove SE corner of Upper Terrace w/ Basement below
(New addition replaces the Upper Terrace and the Basement below)
- (D)** Remove low rock earth retention



CASTLE ADDITION (red)

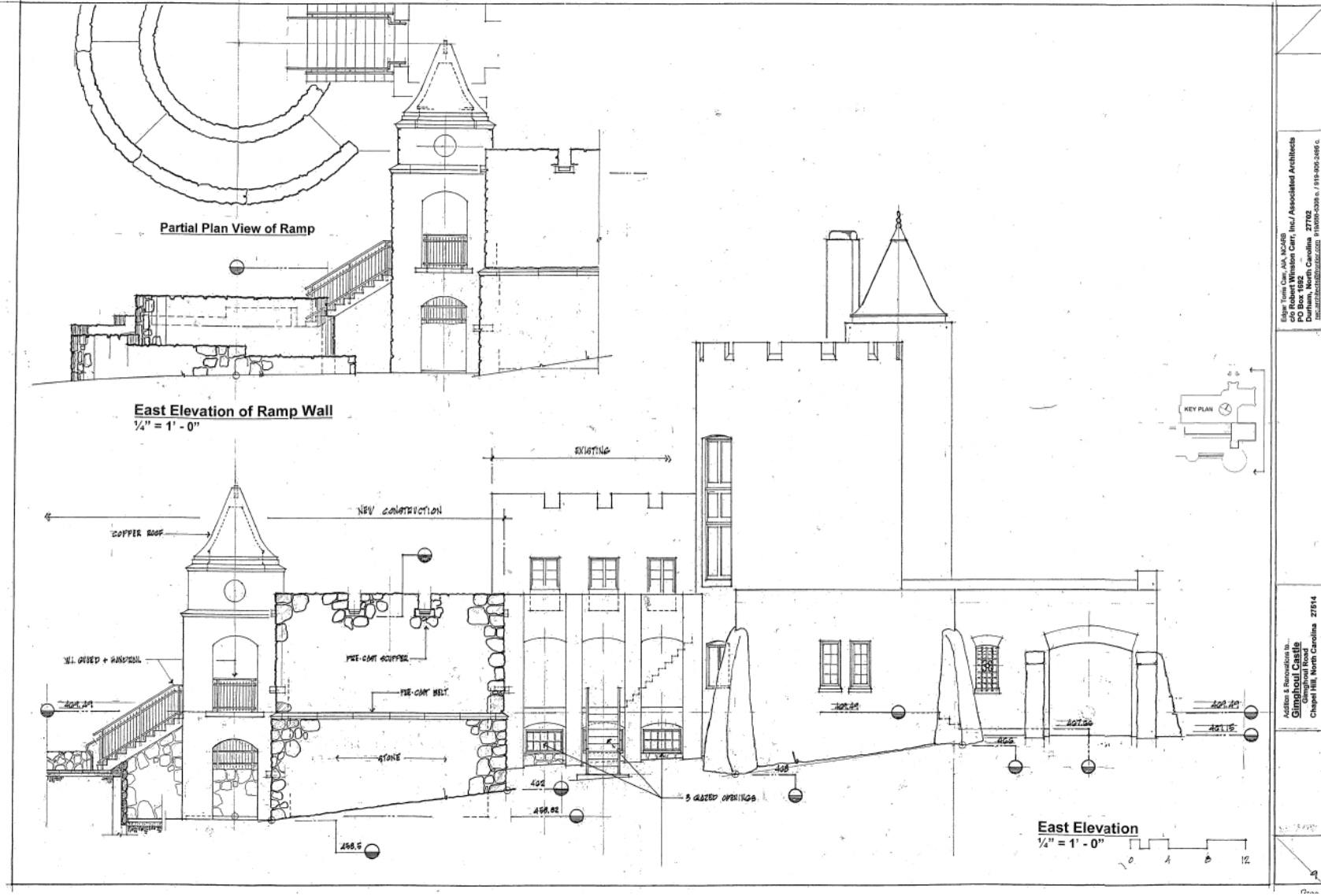
North



- ENLARGED FOOTPRINT - ADA SIDEWALK (yellow)
- LOWER TERRACE WITH RAMP (yellow)
- NEW ADDITION WITH BASEMENT (red)

Edwyn Turner, AIA, NCARB
 c/o Robert Winston Carr, Inc./ Associated Architects
 PO Box 1892
 Durham, North Carolina 27712
 919-488-6398 o./ 919-400-5496 c.

Architects & Renovators, P.C.
Gimghoul Casite
 742 Gimghoul Road
 Chapel Hill, North Carolina 27514



Robert Winnon Carr, Inc./ Associated Architects
 c/o Robert Winnon Carr, Inc./ Associated Architects
 PO Box 11622 Charlotte, NC 27703
 Tel: 704.373.0300 Fax: 704.373.0302

Address & Reference No.
 27514
 Chapel Hill, North Carolina

EAST-EXTERIOR ELEVATION WITH NEW ADDITION



Rendering of completed project