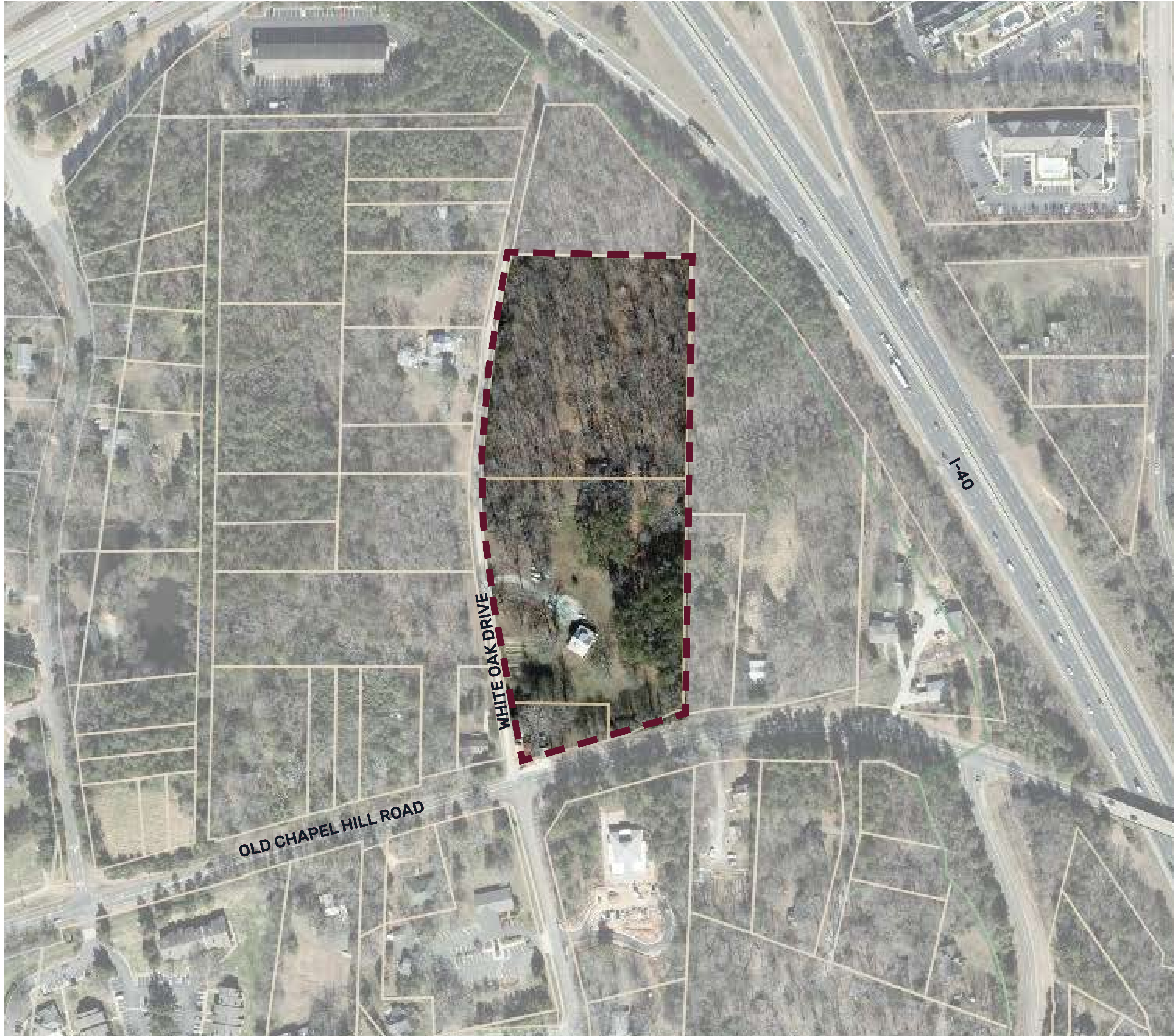


NORTH WHITE OAK DRIVE CONCEPT PLAN



DEVELOPER
DAVIS DEVELOPMENT
403 CORPORATE CENTER DRIVE, SUITE 201
STOCKBRIDGE, GEORGIA 30281

CONTACT LANCE CHERNOW
PHONE 770.474.4345
EMAIL LANCE.CHERNOW@DAVISDEVELOPMENT.COM



ARCHITECT
GEHEBER LEWIS ASSOCIATES
1325 LOGAN CIRCLE NW
ATLANTA, GEORGIA 30318

CONTACT BRIAN KEMPTON
PHONE 407.355.4377
EMAIL BKEMPTON@GLAATL.COM



CIVIL ENGINEER
MCADAMS
2905 MERIDIAN PARKWAY
DURHAM, NORTH CAROLINA 27713

CONTACT SPENCER CHRISTIANSEN
PHONE 919.287.0722
EMAIL CHRISTIANSEN@MCADAMSCO.COM

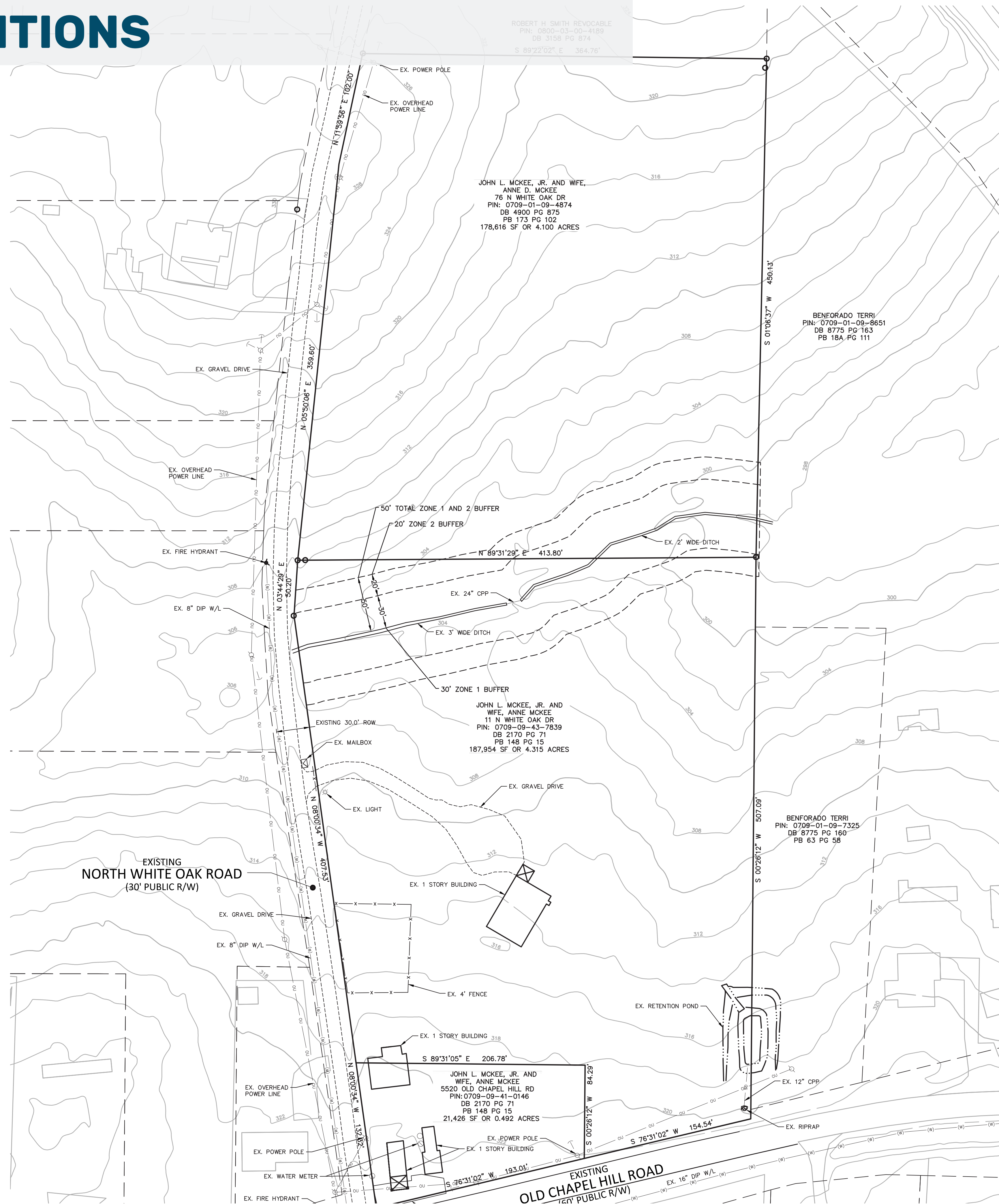
AREA MAP



NORTH WHITE OAK DRIVE CONCEPT PLAN

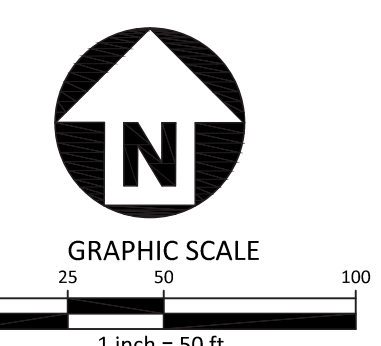
CHAPEL HILL, NORTH CAROLINA

EXISTING CONDITIONS



LEGEND

⊙	SANITARY SEWER CLEANOUT	⊠	MAIL BOX
⊕	WATER VALVE	—	SIGN
⊗	WATER METER	⊙	WELL
⊗	FIRE HYDRANT	⊙	WATER MANHOLE
☆	LIGHT POLE	—SD—	STORM DRAIN PIPE
⊕	POWER POLE	—OU—	OVERHEAD UTILITY LINES
⊠	CURB INLET	—W—	WATER LINE
		—SS—	SANITARY SEWER LINE
		—T—	TELEPHONE LINE
		—G—	GAS LINE
		—UE—	UNDERGROUND ELECTRIC
		—UT—	UNDERGROUND TELEPHONE
		—X—X—	FENCE LINE



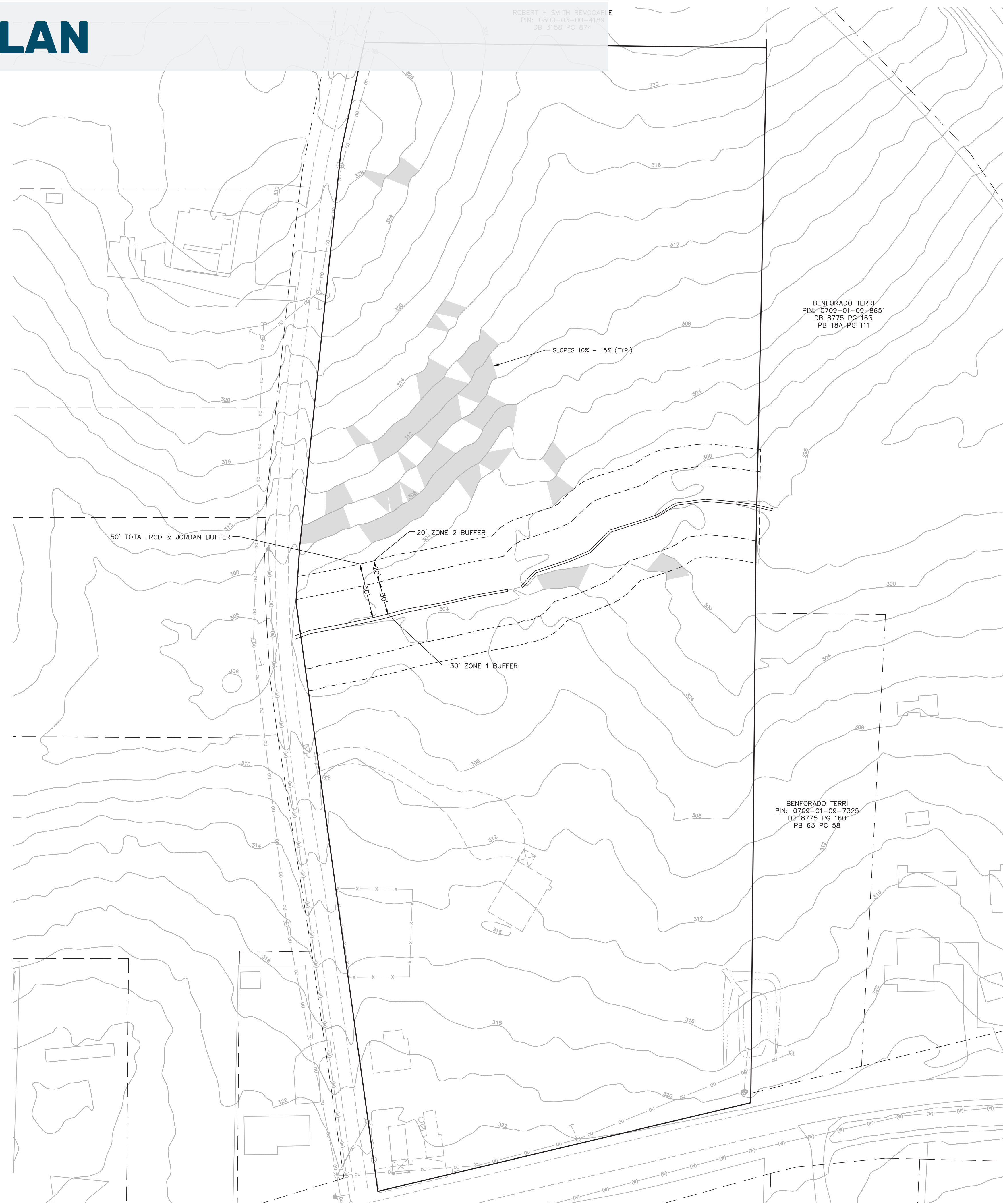
PRELIMINARY DRAWING - NOT RELEASED FOR CONSTRUCTION

NORTH WHITE OAK DRIVE CONCEPT PLAN

CHAPEL HILL, NORTH CAROLINA

STEEP SLOPES PLAN

ROBERT H. H. REVOCAS
 PIN: 0800-03-00-4189
 DB 3158 PG 874

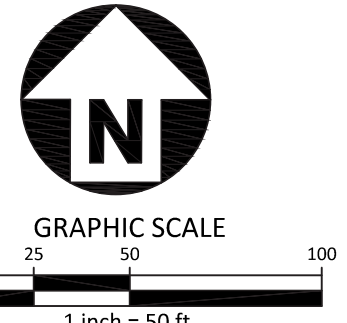


STEEP SLOPE LEGEND

- SLOPES 0% - 10% (8.56 AC) (373,566 SF)
- SLOPES 10% - 15% (0.33 AC) (14,432 SF)
- SLOPES 15% - 25% (0.00 AC) (0 SF)
- SLOPES >25% (0.00 AC) (0 SF)

BENFORADO TERRI
 PIN: 0709-01-09-8651
 DB 8775 PG 163
 PB 18A PG 111

BENFORADO TERRI
 PIN: 0709-01-09-7325
 DB 8775 PG 160
 PB 63 PG 58



PRELIMINARY DRAWING - NOT RELEASED FOR CONSTRUCTION

CONCEPT SITE PLAN

- AREA KEY**
- 01 Building 01 courtyard amenity space
 - 02 Greenway with bridge crossing
 - 03 Rooftop amenity deck above north half of parking deck
 - 04 Building 02 courtyard amenity space
 - 05 Urban streetscape



BUILDING 01
(410 PARKING STALLS)
5-6 STORY
80-116 UNITS

BUILDING 02
(410 PARKING STALLS)
5-6 STORY
84-120 UNITS

N. WHITE OAK DRIVE

OLD CHAPEL HILL ROAD

CONCEPT ELEVATION

