

design

Concept Plan

Aura South Elliott

Chapel Hill, NC

dwell

studio

Project Team



Justin Brown

Development Director
Triangle Region

Jessie Hardesty

Planner

Aaron Moody

Regional Director

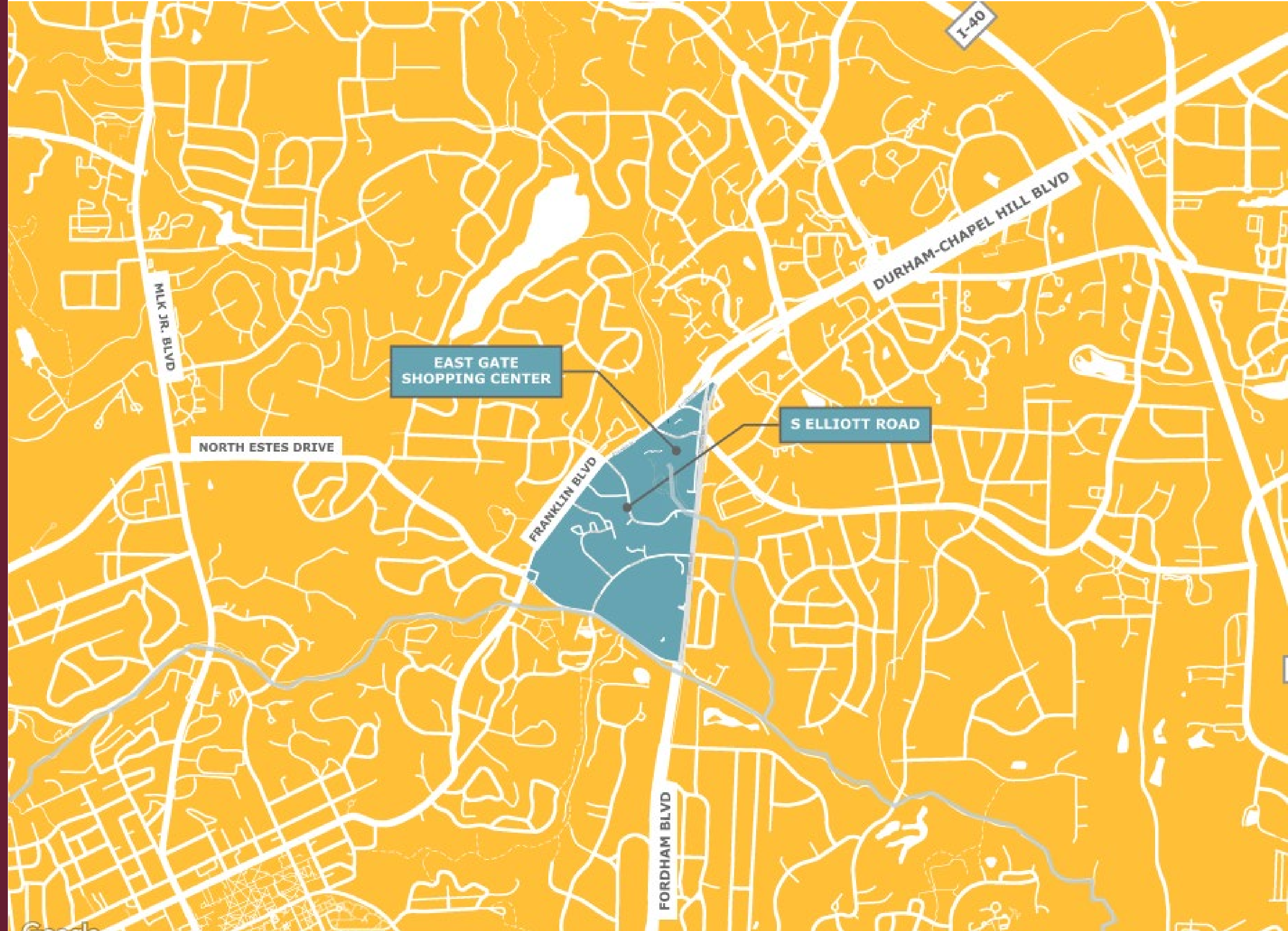
Kate Murdoch

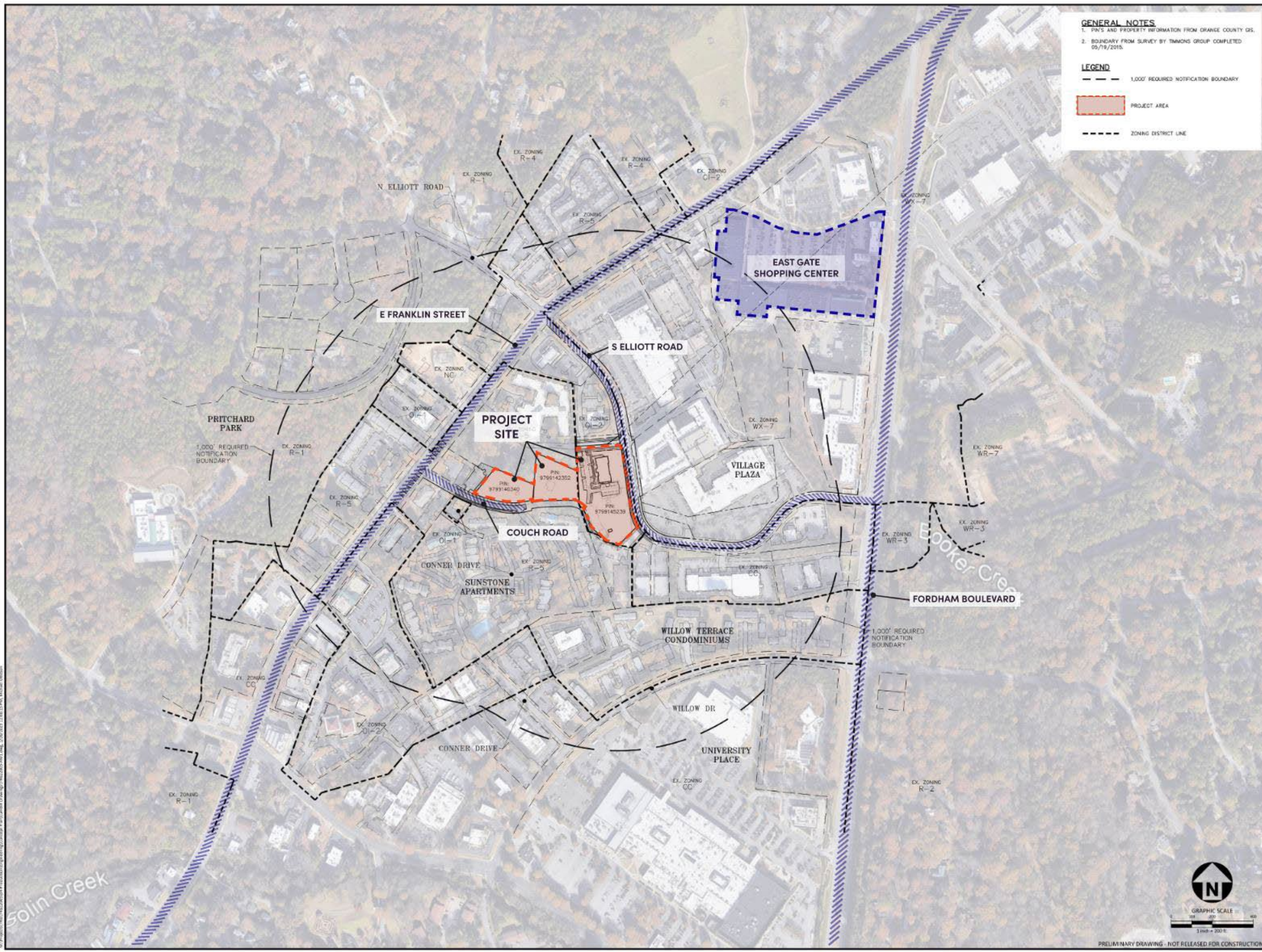
Planner

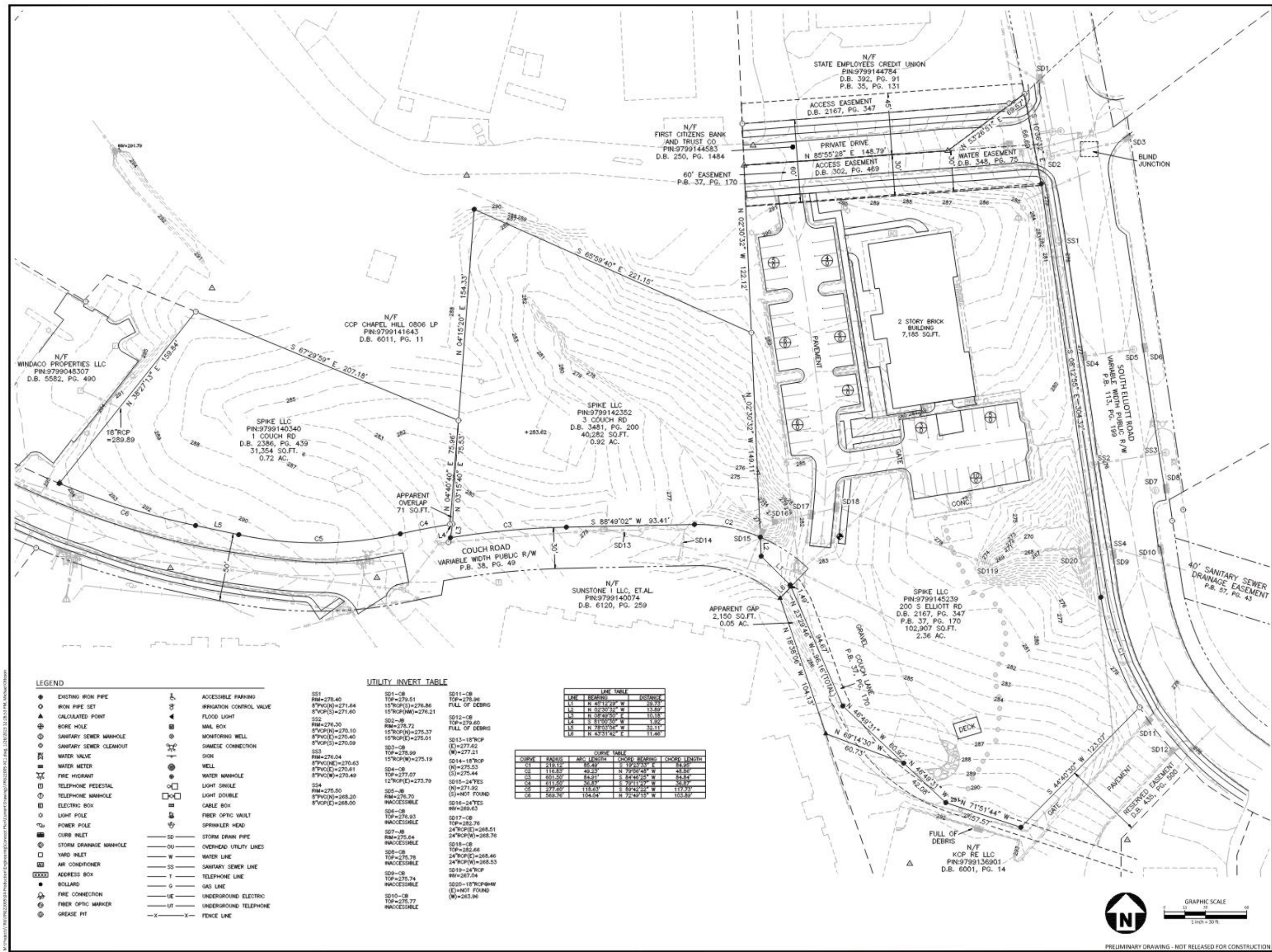
Jennifer Brown

Project Manager

Vicinity Map







LEGEND

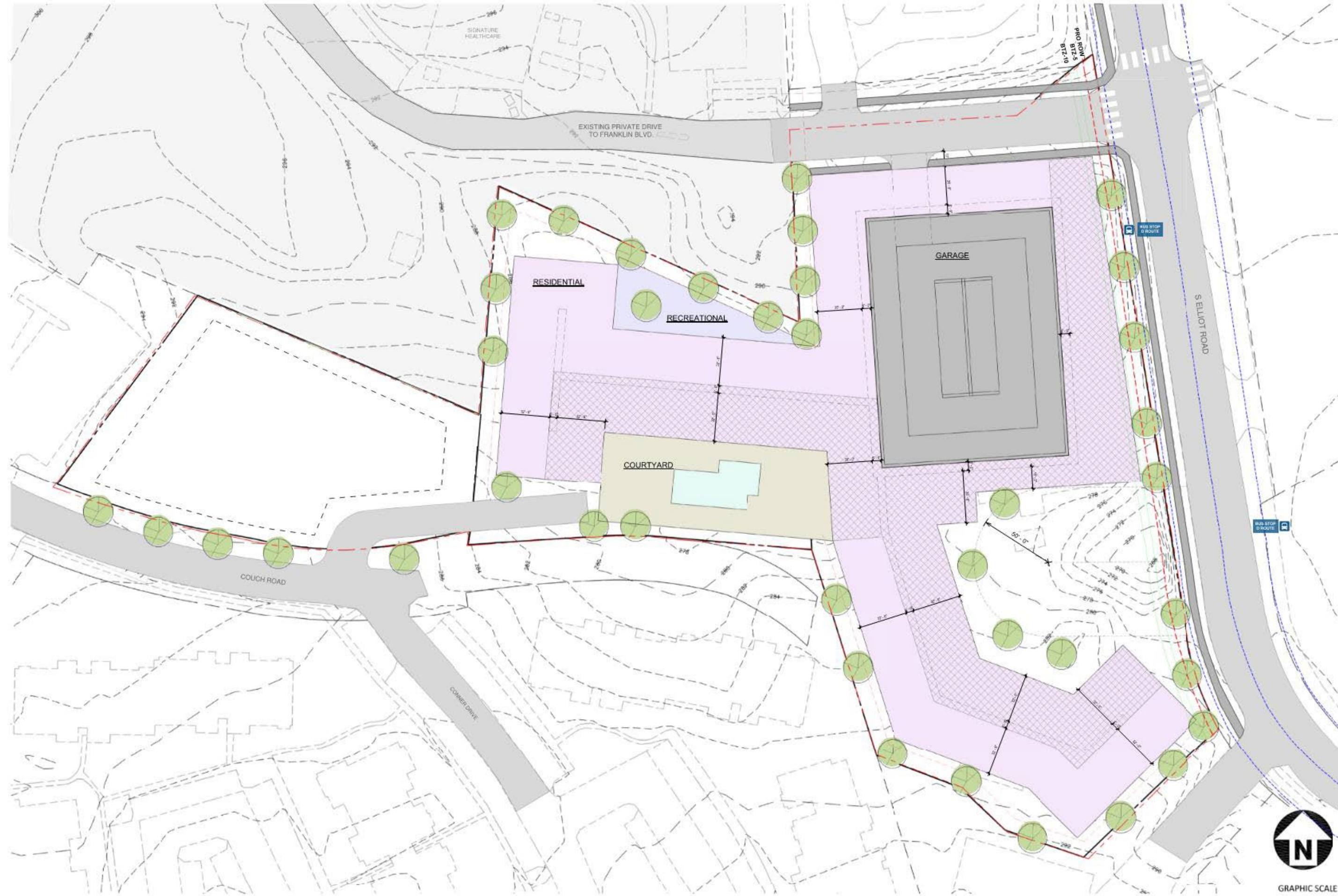
● EXISTING IRON PIPE	▲ CALCULATED POINT	○ BORE HOLE	⊙ SANITARY SEWER MANHOLE	⊙ SANITARY SEWER CLEANOUT	⊙ WATER VALVE	⊙ WATER METER	⊙ FIRE HYDRANT	⊙ TELEPHONE PEDESTAL	⊙ TELEPHONE MANHOLE	⊙ ELECTRIC BOX	⊙ LIGHT POLE	⊙ POWER POLE	⊙ CURB INLET	⊙ STORM DRAINAGE MANHOLE	⊙ WARD INLET	⊙ AIR CONDITIONER	⊙ ADDRESS BOX	● BOLLARD	⊙ FIRE CONNECTION	⊙ FIBER OPTIC MARKER	⊙ GREASE PIT	
⊙ ACCESSIBLE PARKING	⊙ IRRIGATION CONTROL VALVE	⊙ FLOOD LIGHT	⊙ MAIL BOX	⊙ MONITORING WELL	⊙ GANTRY CONNECTION	⊙ SINK	⊙ WELL	⊙ WATER MANHOLE	⊙ LIGHT SINGLE	⊙ LIGHT DOUBLE	⊙ CABLE BOX	⊙ FIBER OPTIC VAULT	⊙ SPRINKLER HEAD	SD STORM DRAIN PIPE	OU OVERHEAD UTILITY LINES	W WATER LINE	SS SANITARY SEWER LINE	T TELEPHONE LINE	G GAS LINE	UE UNDERGROUND ELECTRIC	UT UNDERGROUND TELEPHONE	-X- FENCE LINE

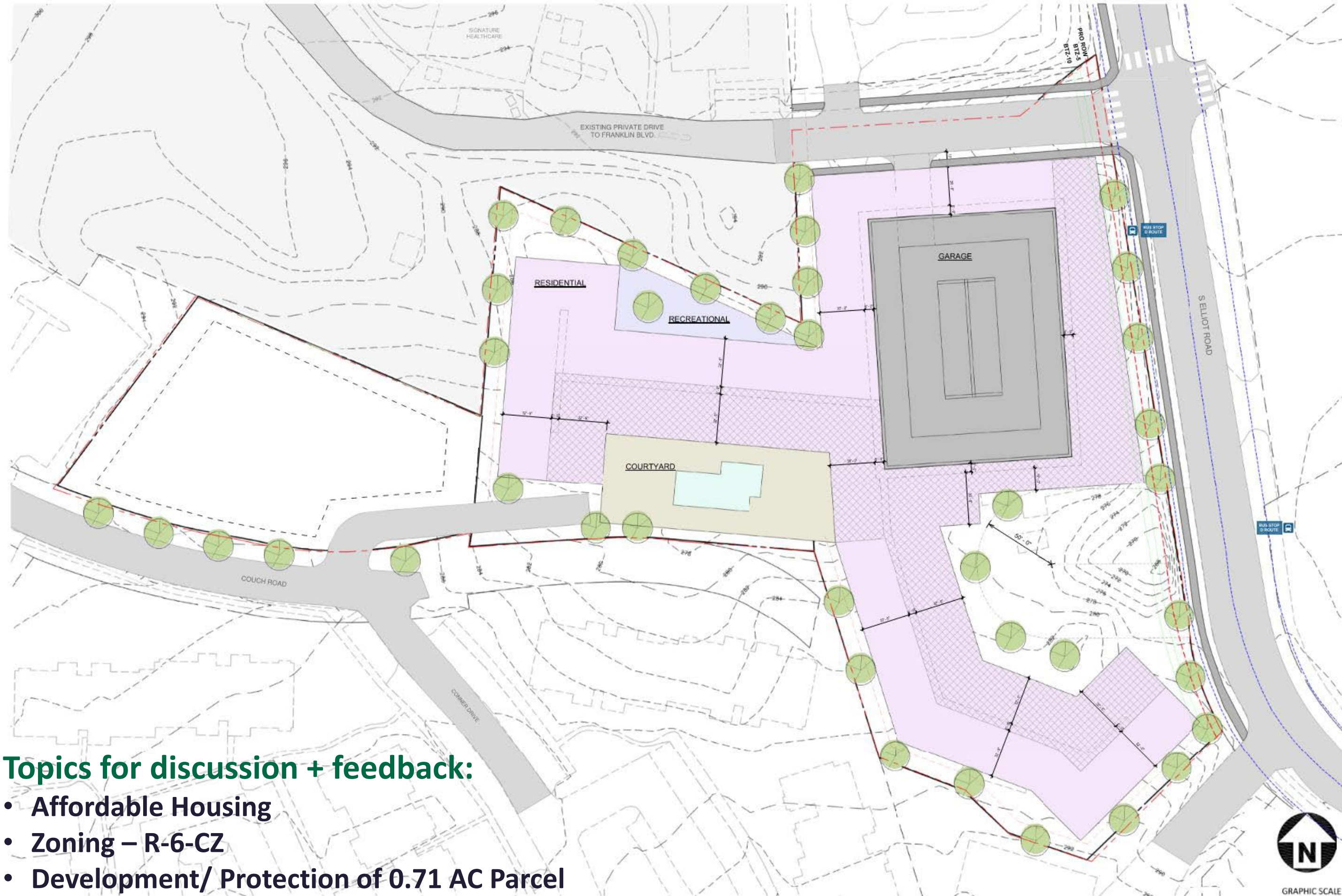
UTILITY INVERT TABLE

SD1-RM=276.40 TOP=276.51 15"RCP(S)=276.86 FULL OF DEBRIS	SD12-CB TOP=279.60 FULL OF DEBRIS	SD13-18"RCP (E)=277.62 (W)=277.21	SD14-18"RCP (W)=276.53 (S)=276.44 12"RCP(E)=273.79	SD15-24"YES (N)=271.92 (S)=NOT FOUND	SD16-24"YES RM=269.63 TOP=282.76 24"RCP(W)=268.76	SD17-CB TOP=282.76 24"RCP(E)=268.51 24"RCP(W)=268.53	SD18-CB TOP=282.66 24"RCP(E)=268.46 24"RCP(W)=268.53	SD19-24"RCP RM=267.04 TOP=276.74 ACCESSIBLE	SD20-18"RCP@W (E)=NOT FOUND (W)=263.96
---	---	---	---	--	--	---	---	--	--

CURVE TABLE

CURVE	BACKSIGHT	ANG. LENGTH	CHORD BEARING	CHORD LENGTH
C1	218.77	84.00	N 12°29'48" E	14.00
C2	118.83	49.23	N 72°02'48" W	48.80
C3	651.50	84.31	S 82°40'28" W	52.80
C4	617.60	30.94	S 72°11'09" W	30.80
C5	277.60	118.83	S 87°42'09" W	117.70
C6	569.70	104.04	N 72°49'15" W	103.80





Topics for discussion + feedback:

- Affordable Housing
- Zoning – R-6-CZ
- Development/ Protection of 0.71 AC Parcel

dwelldesignstudio.com



Atlanta

Corporate Headquarters
1280 Hightower Trail
Atlanta, GA 30350

Charlotte

1910 South Blvd.
Suite 200
Charlotte, NC 28203

Dallas

5801 Tennyson Pkwy
Suite 350
Dallas, TX 75024

DC

8200 Greensboro
Drive, Suite 650
McLean, VA 22102

Orlando

100 E Pine St.
Suite 200
Orlando, FL 32801

Richmond

3122 W Marshall St.
Suite 200
Richmond, VA 23230

Salt Lake City

360 W 300 S
Suite 102
Salt Lake City, UT