



2510 Homestead Road

Maddry Meadows

ABOUT DHIC



Non-profit organization founded in 1974

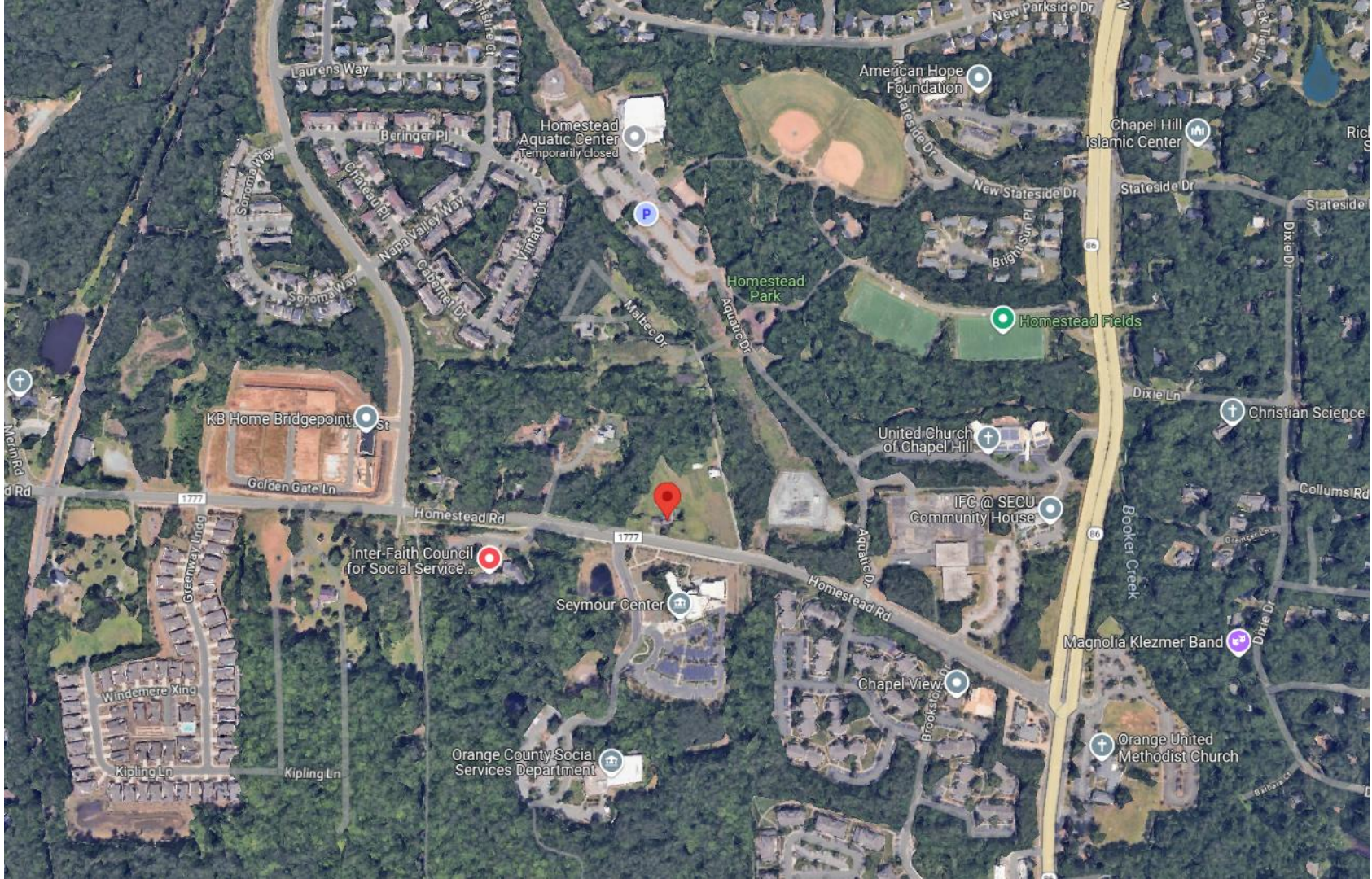
Since inception, DHIC has built 55 apartment complexes, totaling 3,639 affordable units across 9 North Carolina counties. In over 50 years, we have never sold a property and have never had a property remove affordability restrictions. We continue to invest in our existing portfolio to ensure high quality housing for all DHIC residents.

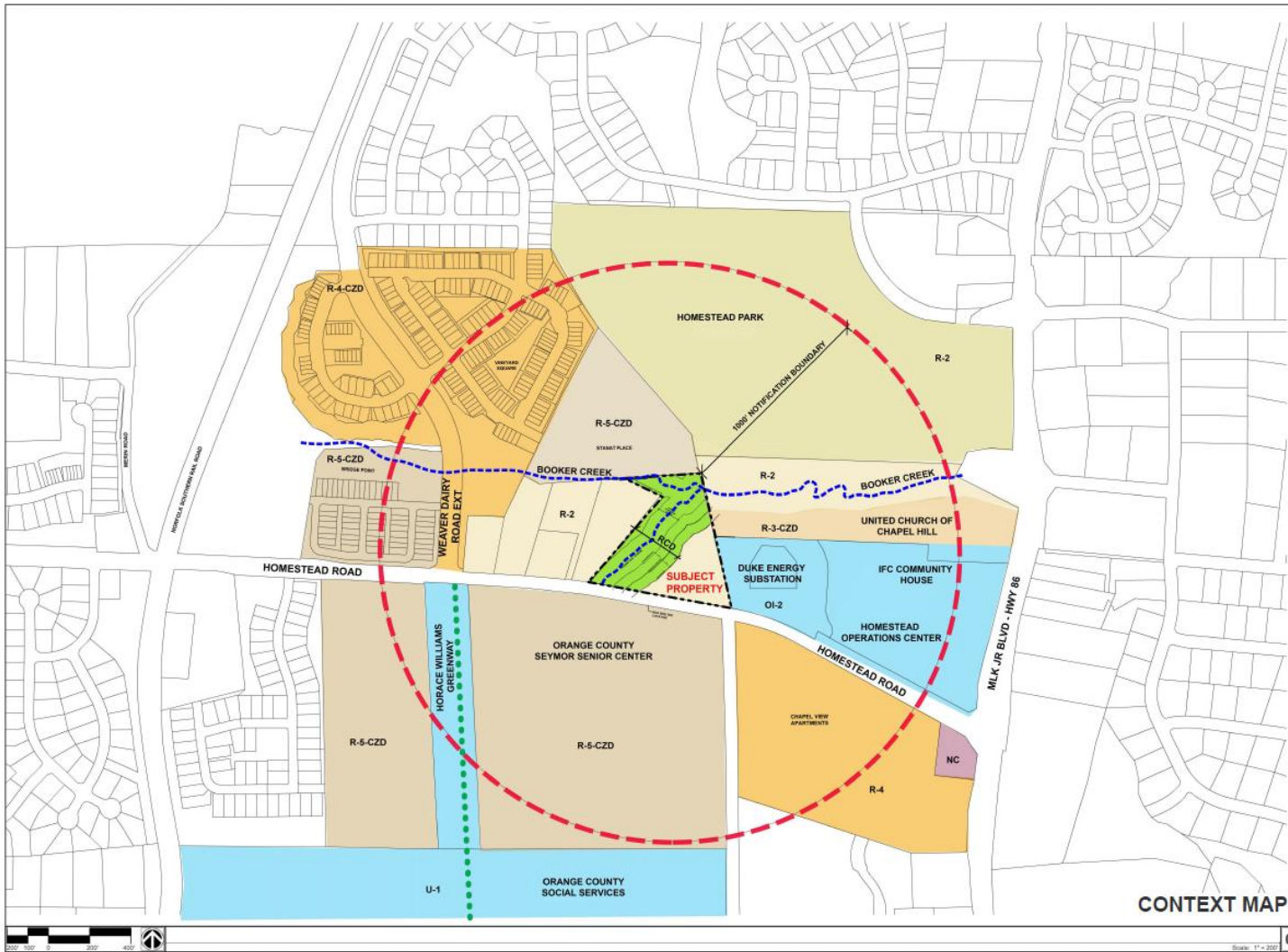
Award winning developments

DHIC is the six-time recipient of NCHFA's Housing NC Award for Best Rental Development, eight-time recipient of the Sir Walter Raleigh for community appearance, and recipient of multiple SPACE Awards from the *Triangle Business Journal*.

RECENT DEVELOPMENT







CONTEXT MAP

cline

100 N. Harrington St.
Raleigh, NC 27603
919.850.6473
cline@engrhouse.com

dhic
HOME TO OPPORTUNITY

Kimley+Horn
Sustainable Engineering Solutions

DHIC, INC.
MADDY MEADOWS
CHAPEL HILL, NORTH CAROLINA



PROJECT: 603186
DATE: 12.13.2024
REVISIONS: DATE
REVISIONS: DATE

DRAWN BY:
CHECKED BY:
AREA CONTEXT
MAP

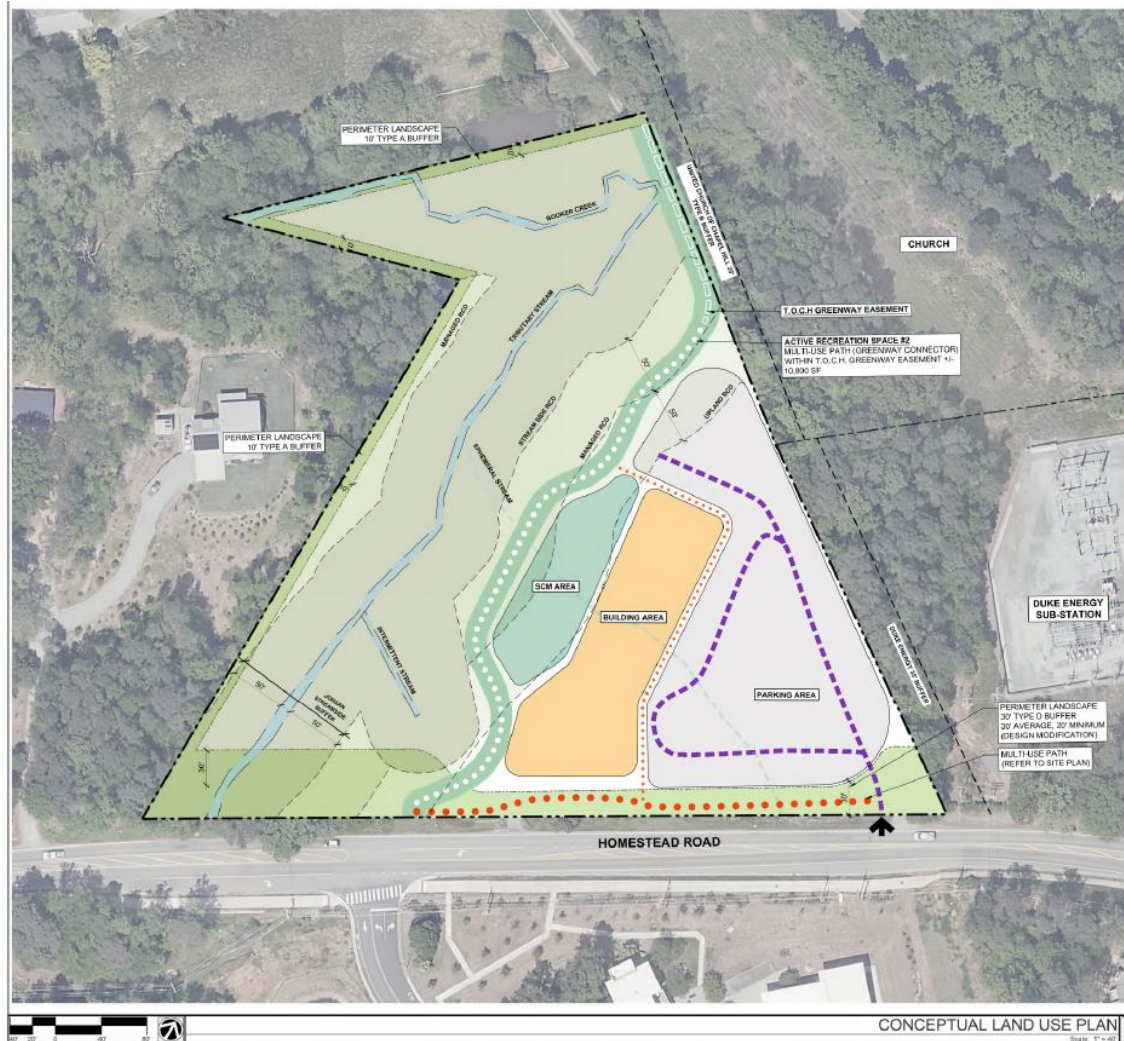
01

LA100

Project Overview

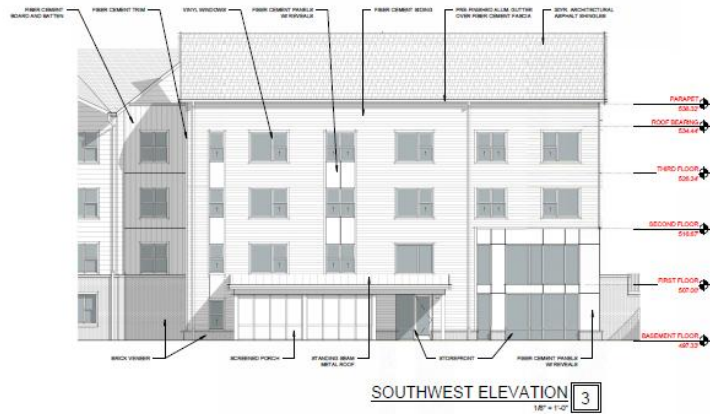
- 3/4 split level building
- 53 units – mix of studio, 1-bedroom, and 2-bedroom units
- Age restricted for 55+ households
- All units restricted to households under 60% of Area Median Income (AMI)
- Project will include on-site property management, multi-purpose room, computer center, screened porch and multiple gathering areas





Site Plan

- Buffered from adjacent uses by RCD, and sub-station.
- Building footprint outside of RCD, disturbance limited to 49% of gross land area.
- MUP connection on Homestead Road, north-south connection between Seymour Center, Homestead Road, and Homestead Park

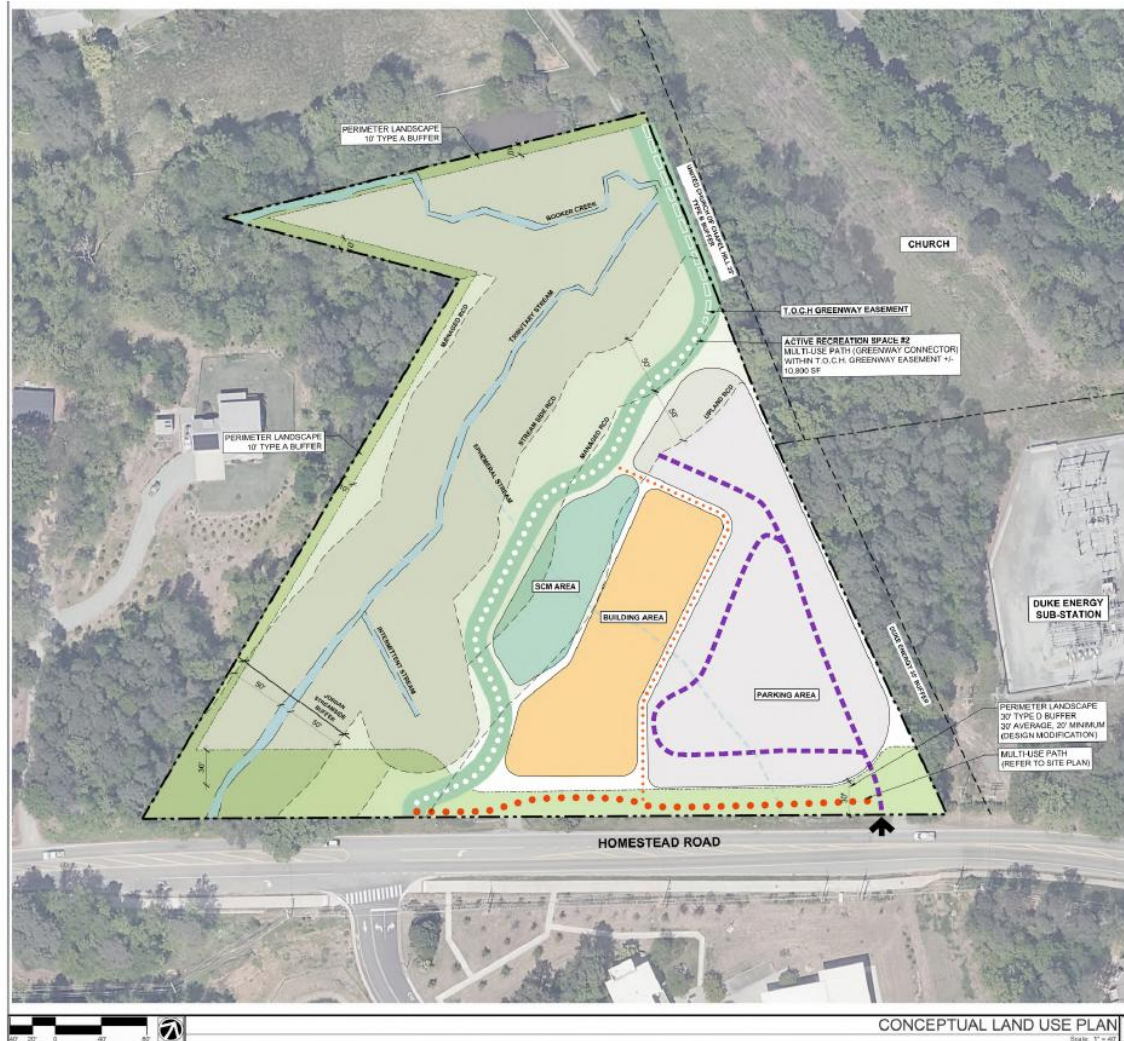




NORTH ELEVATION 2
1/8" = 1'-0"



WEST ELEVATION 1
1/8" = 1'-0"



Site Plan

- Buffered from adjacent uses by RCD, and sub-station.
- Building footprint outside of RCD, disturbance limited to 49% of gross land area.
- MUP connection on Homestead Road, north-south connection between Seymour Center, Homestead Road, and Homestead Park

QUESTIONS?



