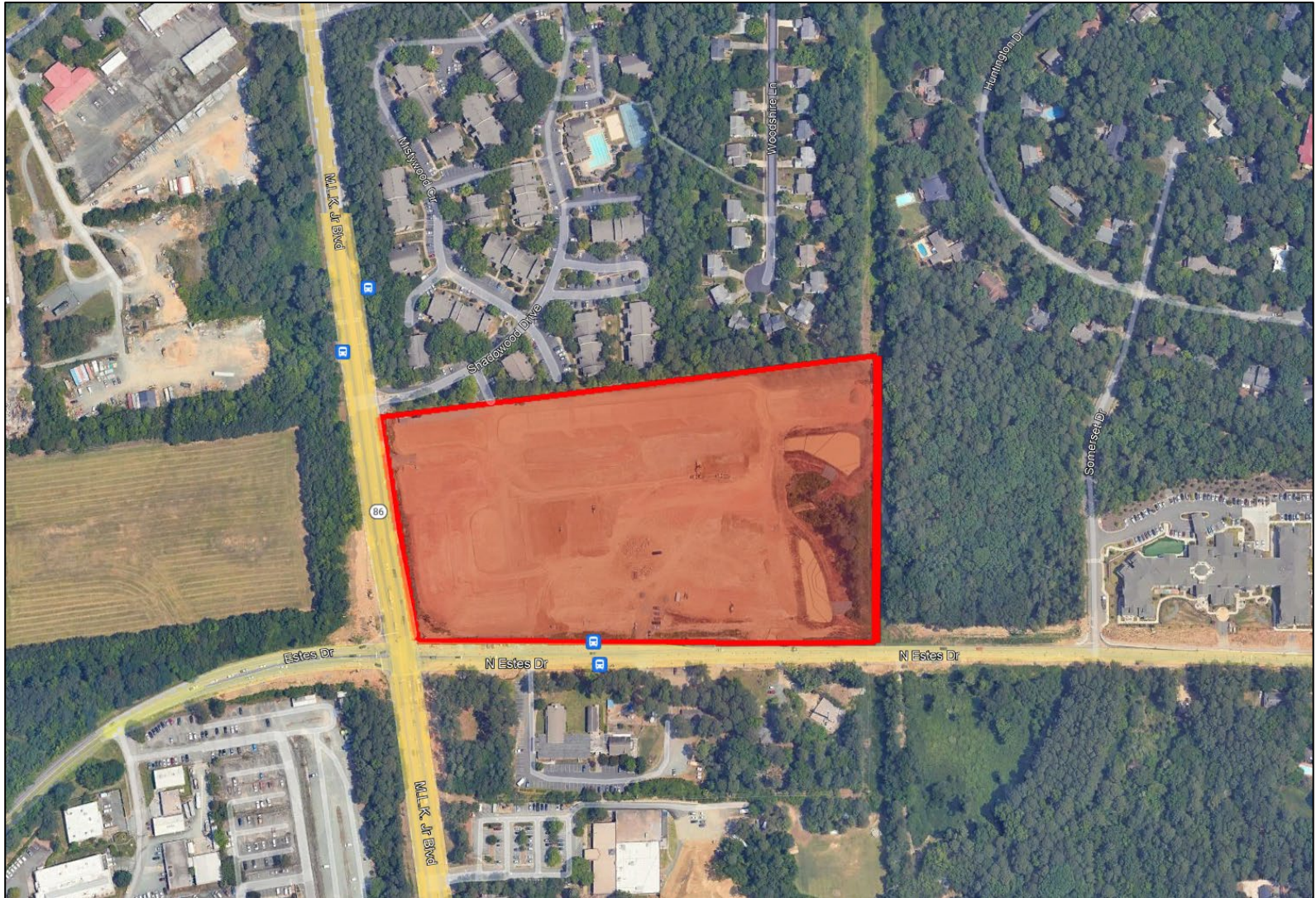


# Aura Chapel Hill

*Offsite Lighting Minor  
Modification*

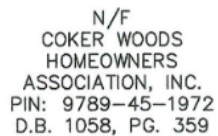


## Site Location

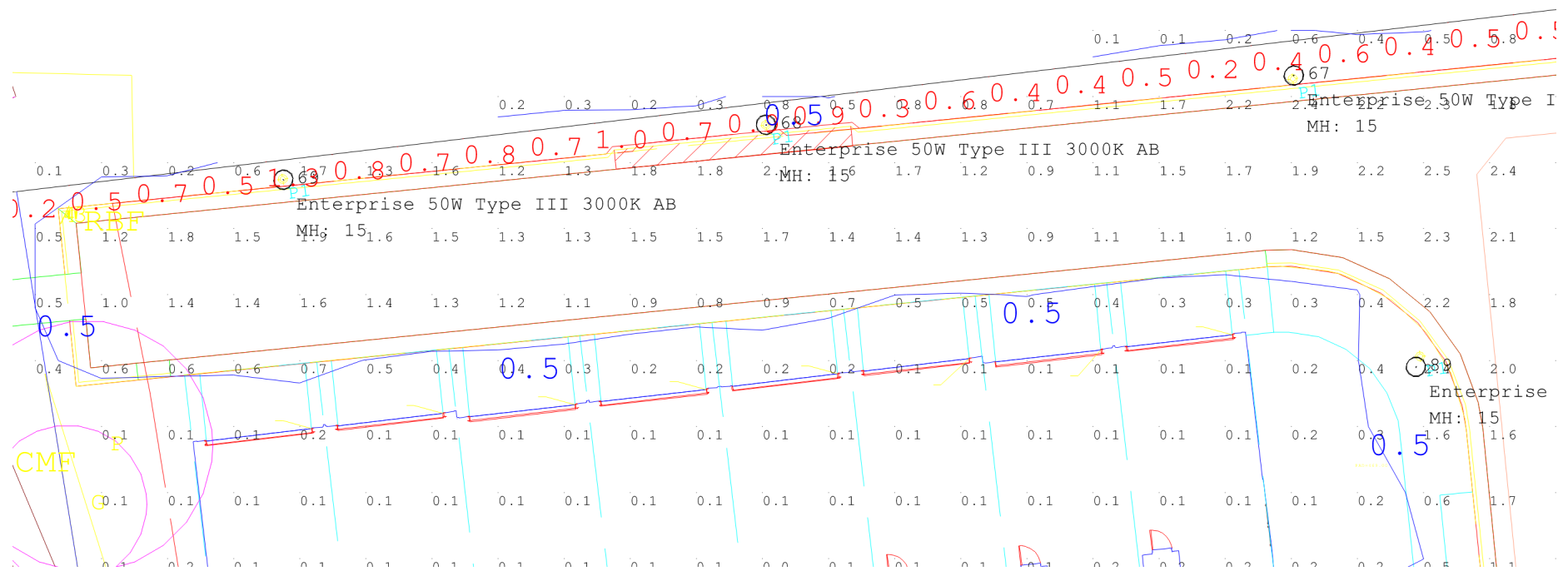




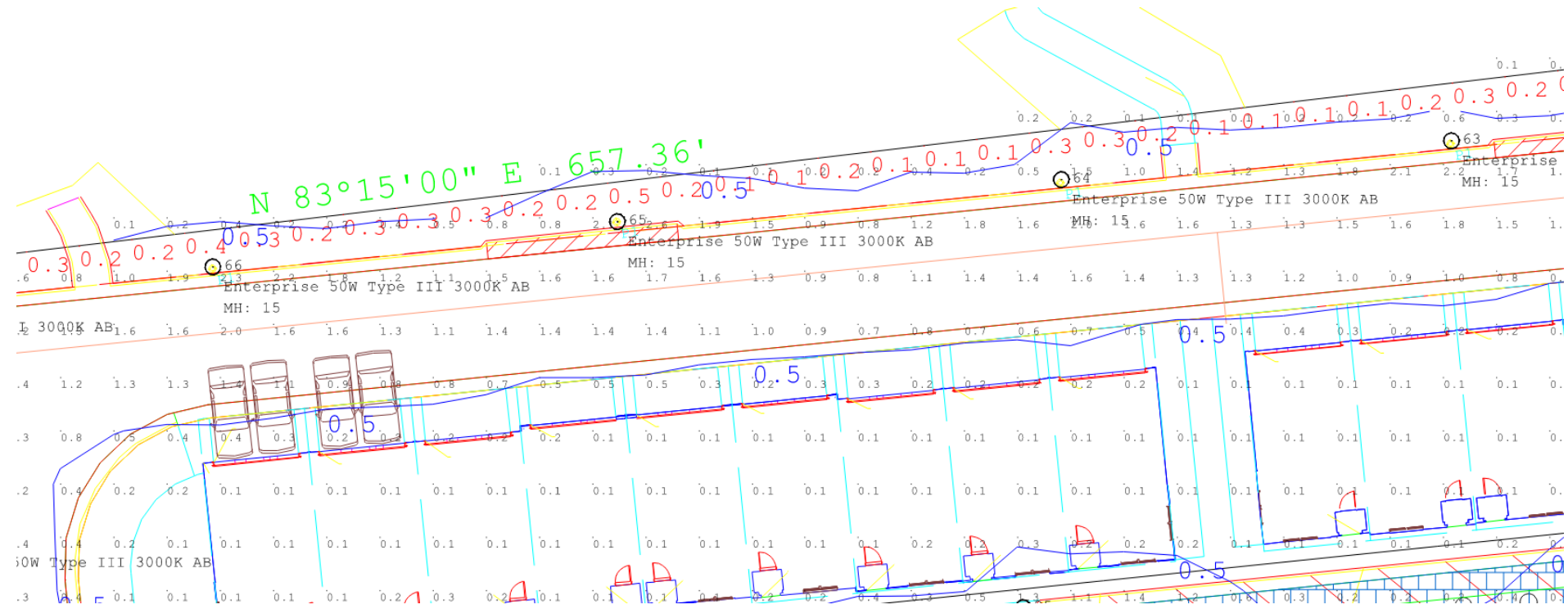




# Enhanced Photometric Plan – Area 1



## Enhanced Photometric Plan – Area 2





## Enterprise Fixture

EXHIBIT A

## Outdoor Lighting

### ENTERPRISE LED



ENTERPRISE LED

<b>LED</b> (Light-emitting diode)	150 / 220 watts
<b>Mounting height</b>	20' – 30'
<b>Color</b>	Black Green (Special Conditions) Bronze (Special Conditions) Gray (Special Conditions)
<b>Pole</b>	Style A

**IESNA cutoff classification:** Full-cutoff  
**Color temperature:** 3,000K Primary  
 4,000K Available

FIXTURE	WATTS	LUMENS	PATTERN	BUG RATING
Enterprise	150	15,091	III	B2-U0-G3
		15,595	IV	B3-U0-G3
		16,500	V	B4-U0-G2
Enterprise	220	21,502	III	B3-U0-G3
		22,219	IV	B3-U0-G4
		23,507	V	B5-U0-G3

**LIGHT DISTRIBUTION PATTERNS**



light distribution patterns


POLE AVAILABLE	MOUNTING HEIGHT	FOUNDATION
Style A	20', 25', 30'	Direct Bury, Anchor Base



For additional information contact

## Shoebox Fixture

**EXHIBIT B** Outdoor Lighting  
 MICRO ROADWAY LED



MICRO ROADWAY LED

**LED**  
(Light-emitting diode) 50 / 70 watts

---

**Mounting height** 20' – 30'

---

**Color** Black  
Green  
Bronze  
Gray

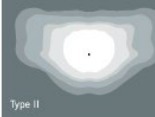


---

**Pole** Wood  
Style A

**IESNA cutoff classification:** Full-cutoff  
**Color temperature:** 3,000K Primary  
 4,000K Available


FIXTURE	WATTS	LUMENS	PATTERN	BUG RATING
Micro	50	5,407	II	B1-U0-G1
		5,342	III	B1-U0-G1
		5,434	V	B3-U0-G1
Micro	70	7,820	II	B2-U0-G2
		7,820	III	B1-U0-G2
		7,782		

**LIGHT DISTRIBUTION PATTERNS**

light distribution patterns

POLE AVAILABLE	MOUNTING HEIGHT	FOUNDATION
Style A	20', 25', 30'	Direct Bury, Anchor Base
Wood	25', 30'	Direct Bury



For additional information, contact