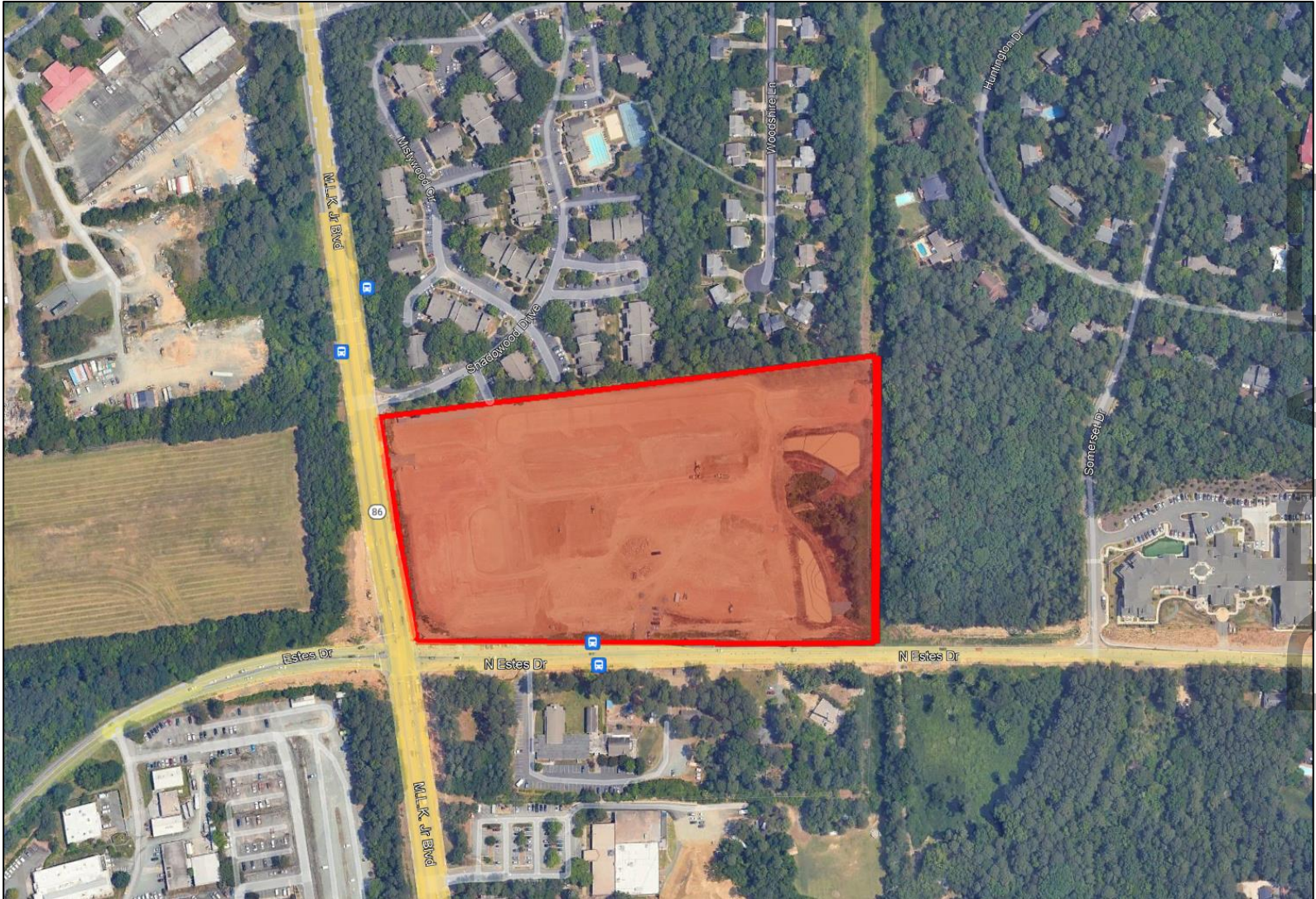


# Aura Chapel Hill

*Offsite Lighting Minor  
Modification*



## Site Location







## Enterprise Fixture

EXHIBIT A

Outdoor Lighting

ENTERPRISE LED



ENTERPRISE LED

**LED**  
(Light-emitting diode) 150 / 220 watts

---

**Mounting height** 20' – 30'

---

**Color**  
Black  
Green (Special Conditions)  
Bronze (Special Conditions)  
Gray (Special Conditions)

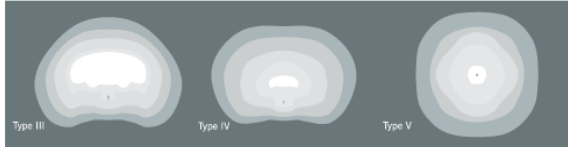
---

**Pole** Style A

**IESNA cutoff classification:** Full-cutoff  
**Color temperature:** 3,000K Primary  
 4,000K Available

FIXTURE	WATTS	LUMENS	PATTERN	BUG RATING
Enterprise	150	15,091	III	B2-U0-G3
		15,595	IV	B3-U0-G3
		16,500	V	B4-U0-G2
Enterprise	220	21,502	III	B3-U0-G3
		22,219	IV	B3-U0-G4
		23,507	V	B5-U0-G3

**LIGHT DISTRIBUTION PATTERNS**



light distribution patterns

POLE AVAILABLE	MOUNTING HEIGHT	FOUNDATION
Style A	20', 25', 30'	Direct Bury, Anchor Base



For additional information contact

DRAFT

EXHIBIT B

Outdoor Lighting

MICRO ROADWAY LED



MICRO ROADWAY LED

LED  
(Light-emitting diode) 50 / 70 watts

Mounting height 20' – 30'

Color  
Black  
Green  
Bronze  
Gray

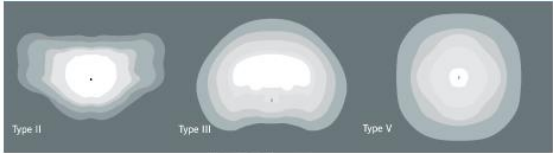
Pole  
Wood  
Style A

IESNA cutoff classification: Full-cutoff

Color temperature: 3,000K Primary  
4,000K Available

FIXTURE	WATTS	LUMENS	PATTERN	BUG RATING
Micro	50	5,407	II	B1-U0-G1
		5,342	III	B1-U0-G1
		5,434	V	B3-U0-G1
Micro	70	7,820	II	B2-U0-G2
		7,820	III	B1-U0-G2
		7,782		

LIGHT DISTRIBUTION PATTERNS



Type II      Type III      Type V

light distribution patterns

POLE AVAILABLE	MOUNTING HEIGHT	FOUNDATION
Style A	20', 25', 30'	Direct Bury, Anchor Base
Wood	25', 30'	Direct Bury

For additional information, contact



DRAFT